

INDIAN JEWELRY SILVER TREE

OPEN
10-6
OR BY APPT.



AGGIES!!
10% DISC.
WITH CURRENT I.D.

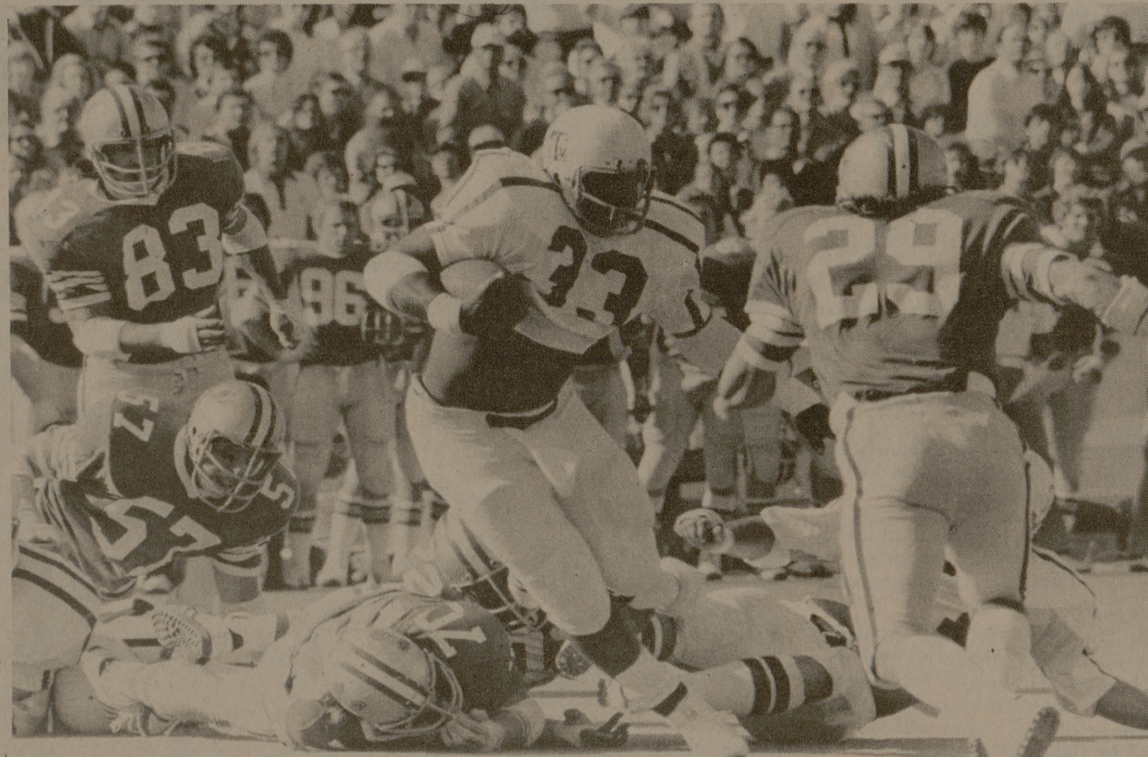
MERCHANTS

2600 S. College - Bryan - 822-1277

WE HAVE A LARGE SELECTION OF UNUSUAL JEWELRY IN OUR SHOP AND AT THE MSC GIFT SHOP.

ALL REASONABLY PRICED

LIQUID SILVER CHOKER KITS, FINDINGS, TURQ & CORAL BEADS



Woodard crashes through

A&M's George Woodard collects some of named SWC Player of the Week. his 167 total yards against Rice. He was

Staff Photo by Doug Freeman

Rice's first half scare draws comment from Ags

By PAT EDMONDSON
Battalion Sports Writer

Aggie rooters got a scare Saturday as the Rice Owls jumped on Melvin Robertson's Maroon Maulers for two quick touchdowns and a 14-13 halftime lead.

Quarterback Tommy Kramer picked apart the secondary early, hitting on short screen passes to his backs and receivers. Kramer's freedom was a combined result of a moderately dull pass rush and a blitz put on by the linebackers. Kramer simply hit the open man between the linebackers and the secondary.

"They picked the open man," said linebacker Ed Simonini. "We blitzed the middle and they caught either the back or the tight end as he came in our direction. We did some different things and readjusted a little after that."

"We made a few mistakes," added Robert Jackson. "They had the backs coming out of the backfield and it was tough trying to watch them and cover the run too."

But it was the gruesome forward progress of the offense which rescued the Cadets when it appeared that Rice might spoil their perfect record as they did in 1957.

Fullback George Woodard continued to blast his way through the heart of the Rice defensive line all afternoon. The inside punch was most effective as the A&M lineman did a superb job of opening the holes.

"We just blew them off the line," said all-SWC guard Bruce Welch. "They were trying to cover the outside, so we kept running right at 'em inside."

"Bruce and I were mainly double teaming," said center Mark Dennard, who made his second straight starting appearance.

Senior Bucky Sams, nestled with injuries all year, filled in at fullback when Woodard suffered a slight hip pointer. "We were hitting the creases," he said. "We knew that once we penetrated the line, that all

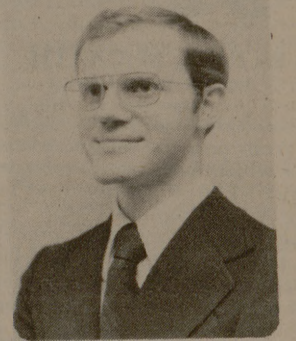
that was left to stop us was their secondary."

Halfback Skip Walker displayed the form which earned him all-SWC honors his sophomore year. Last season, he looked sensational until slowed down by various injuries. "I'm staying healthy," said Walker after the Rice victory. "Nothing is stopping me. It's just the desire to play. I've gotta give credit to our offensive line," he added. "They did a damn good job."

Also effective at running was quarterback Mike Jay. The ex-Marine fought his way through a rash of Owl defenders, scoring two touchdowns on excellently called plays.

Although he had little trouble on the ground, Jay couldn't seem to put the ball in the receiver's hands on several passing plays. "I was given a lot of pressure," he said. "They were stunting us, and their pass coverage was good too. But we came up with the big play when we had to and that's what passing is all about."

A WINNING COMBINATION



IVAN HINDERER
Campus Representative

PROTECTIVE LIFE®
INSURANCE COMPANY

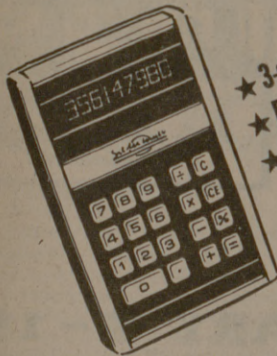
FOR INFORMATION CALL

THOMAS ASSOCIATES

520 University Dr., East
846-7714

Calculator Service Systems

3832 TEXAS AVE. BRYAN
846-4215



- ★ 3-day service
- ★ Free cost estimates
- ★ 90-day guarantee on parts and labor
- ★ All-type brands

"We service all types of out-of-warranty electronic calculators."

LOUIS FOS - OWNER

MON.-FRI. SATURDAY
9:00-1:00, 1:30-5:30 9:00-12:30

THE GREATEST SANDWICH

The greatest sandwiches in the Southwest are served from 11:00 a.m. to 1:30 p.m. each day Monday through Friday on floor 11M, Conference Tower. The greatness of these sandwiches is no accident. There are several types of meats and you can select your choice and mix or match any three pieces for your sandwich on the bread of your choice.

Two of the several types of bread are sour dough and baked fresh daily in our Duncan bakery. Further, these breads are prepared without shortening for the diet conscious guest. For the greatest taste tempting delight just make your sandwich exactly like you want it and pop it into one of the handy micro-wave ovens. This wonderful sandwich and a bowl of soup for only \$1.50 plus tax will place you on cloud 11M.

We agree this is a bit of a long story, but it is difficult to stop talking about our tasty sandwiches.

Open Sunday 11:00 A.M. - 1:30 P.M. for regular meal only.

"QUALITY FIRST"

"Up there, I think my job's more challenging than any pilot's."

Lt.(JG) John McHenry, Naval Flight Officer



"When this bird's up there, we're really a team—me, my pilot and about 17 million dollars worth of electronics gear."

"But once an intercept mission begins, I'm the guy that's running the show."

"I'll tell you, when you're smoking along at 500 knots, and pulling 6 1/2 G's, it takes all the concentration you've got to track multiple bogies on the AWG-9. Sometimes, after a really tough mission, you come home wringing wet."

"Even then, I just can't wait to get up there again."

The thrill of flight, plus the challenge of operating complex systems. That's the world of a man who wears the wings of a Naval Flight Officer.

If you're a college graduate, or well on your way, and think you're in good enough shape to handle our tough Navy training, maybe you should find out more about the Naval Aviation team.

Fly Navy.

SEE YOUR OFFICER INFORMATION TEAM ON CAMPUS —

9:00 A.M. TO 4:00 P.M.
AT THE STUDENT CENTER