

FedMart's low meat prices will do wonders for your budget

Meat takes a mighty big chunk of your food budget. That's why FedMart's low prices on meat can really give your budget a lift. Check and compare our prices on U.S.D.A. "Good" Beef cuts below with what you'd pay elsewhere. Besides the savings, your family will like this lean, tender, nutritious beef.

Of course, for special occasions, dinner parties or just everyday deluxe eating you can still enjoy U.S.D.A. "Choice" Beef cuts also available at FedMart savings you'll like.

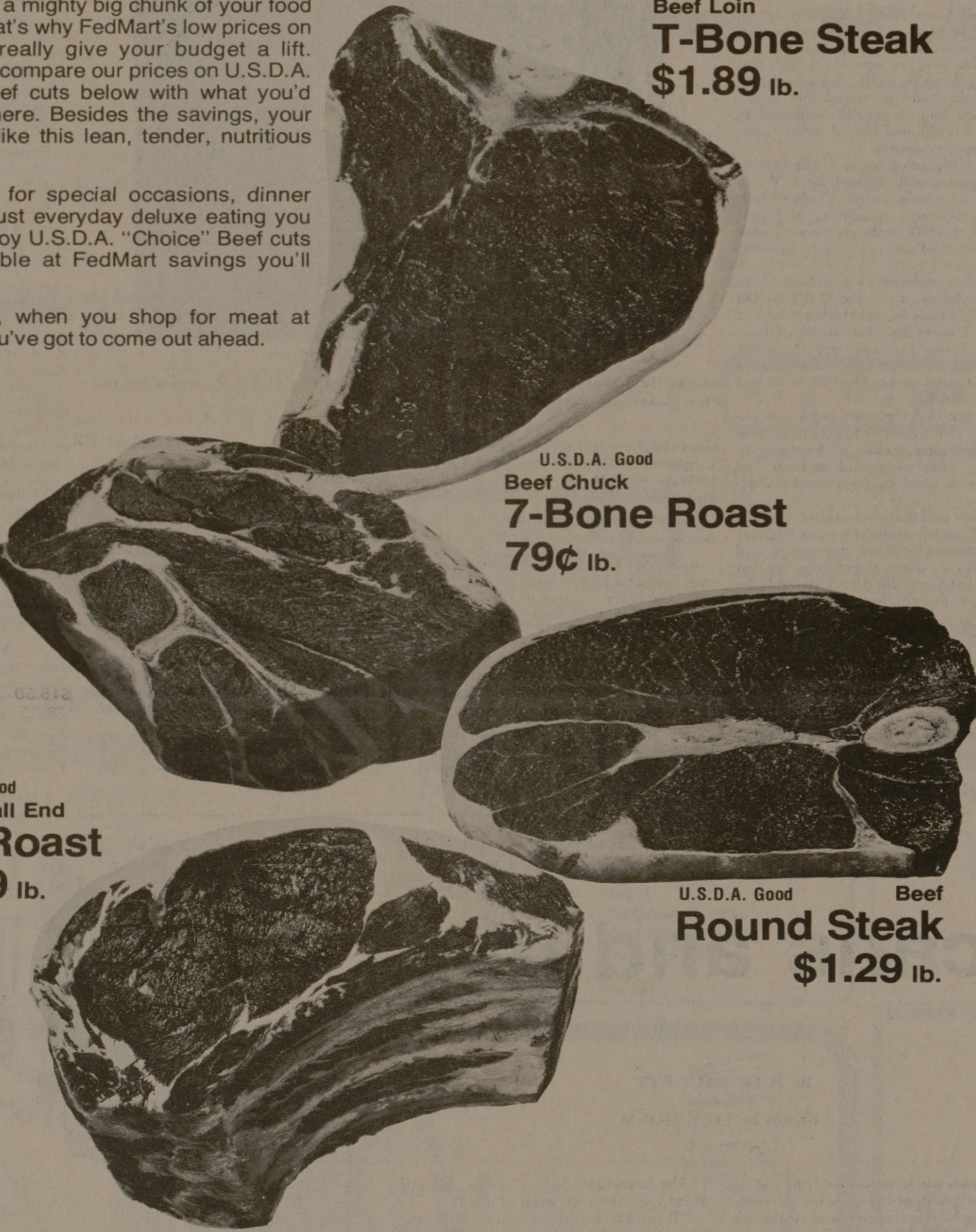
Either way, when you shop for meat at Fedmart you've got to come out ahead.

U.S.D.A. Good
Beef Loin
T-Bone Steak
\$1.89 lb.

U.S.D.A. Good
Beef Chuck
7-Bone Roast
79¢ lb.

U.S.D.A. Good
Beef Small End
Rib Roast
\$1.59 lb.

U.S.D.A. Good
Beef Round Steak
\$1.29 lb.



Look at FedMart's savings on U.S.D.A. Good Beef cuts

Beef Loin Sirloin Steak .. \$1.49 lb.	Beef Rib Eye Steak . \$2.59 lb.
Beef Loin Steak Porterhouse ... \$1.99 lb.	Beef Chuck Boneless Shoulder Roast . \$1.19 lb.
Beef Round Tip Steak \$1.59 lb.	Beef Round Tip Roast \$1.49 lb.
Beef Boneless Round Steak .. \$1.39 lb.	Beef Round Rump Roast .. \$1.29 lb.

New store hours: Mon. thru Fri. 10 AM to 8 PM Saturday 9:30 AM to 6 PM Closed Sunday

The Consumer's Friend Since 1954
FedMart[®]
Family Savings Centers

□ HOUSTON: Mykawa Rd. & Loop 610/4004 Bellaire Blvd. (at Wesleyan)/Wirt Rd. & Kempwood (W. 34th), Spring Branch
□ COLLEGE STATION: 701 University Drive East (at Tarrow St.) □ PASADENA: 4616 Spencer Highway (at Preston)

'Output of food hinders peace'

By P. DOUGLAS WINSHIP
Battalion Staff Writer

A peace greater than the mere absence of war.

The possibilities of world peace were discussed at a World Peace Day program last Friday evening.

Present at the panel discussion, held in observance of World Peace Day were three A&M faculty members. Dr. Edward Hiler of Agricultural Engineering, Dr. Murray Milford of Agronomy and Dr. Walter Stenning of Educational Psychology.

Panel members gave a short speech before the floor was opened for discussion.

The speeches, as well as the discussion which followed, were broad in scope and concentrated on material improvements possible in a world of peace.

Hiler cited the currently low

production of food as an important obstacle to world peace.

Integrated action of all nations could double the output of food in a few years, Hiler said. Only North America and Australia are currently exporting food, he added.

Milford compared a world at peace to a global village in which everyone is concerned with everyone else's well being. He said the population growth would eliminate itself in a world of peace. A more free exchange of resources, including the human gene pool, are advantages of world peace.

Before world peace can be achieved there must be a restructuring of human attitudes, Stenning said.

The "us" versus "them" attitude which is currently so prevalent must be eliminated, he said. To achieve a change in attitude, he continued, an individual inner peace is necessary.

Street signs helpful, can pose dangers

A highway sign gives directions and information but it can also become the nightmarish end of the ride for a car off the road or out of control.

As a result, engineers have been trying to develop breakaway signs and other impact attenuating devices to make the highway environment a little more forgiving.

In this effort to find the least expensive and safest type of signs being used in the U.S., the Federal Highway Administration gave the

task to a team of researchers from the Texas Transportation Institute at A&M.

The assembled information can then be used by transportation officials and contractors that select, construct and maintain these highway signs.

Project head Dr. Hayes E. Ross, Jr., said it will be mainly a search to see what has been developed but crash testing on their own is planned. Research will be on signs with insufficient test data.

MEETINGS SCHEDULED

The Marketing Society will meet Wednesday at noon in Room 601 of the Rudder Tower.

CWENS will meet Wednesday at 5:30 p.m. in Room 140 of the MSC.

The Saddle and Sirloin Bar-B-Que will be held in Rooms 224-225 of the MSC Wednesday at 7 p.m.

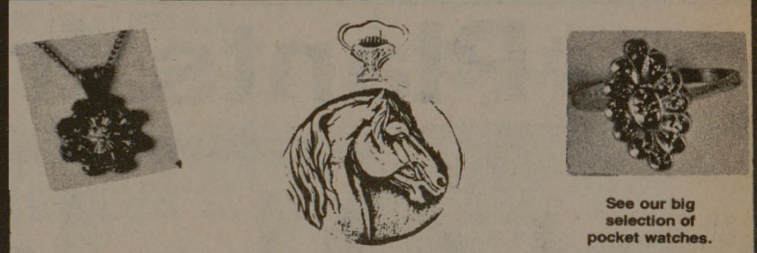
The Bonfire Committee will meet Wednesday in Room 701 of the Rudder Tower at 7 p.m.

The A&M Sports Car Club will meet Wednesday at 7:30 p.m. in Room 607 of the Rudder Tower.

The Senior Class Council will meet at 7:30 p.m. in Room 410 of the Rudder Tower.

The Golden Triangle HTC will meet at 7:30 p.m. in Room 229 of the MSC.

The Speleological Society will meet in Room 510 of the Rudder Tower Wednesday at 8 p.m.



EMBREY'S JEWELRY

Invites you to visit our jewelry repair department. We specialize in all types of jewelry repair and custom work. Two qualified jewelers to serve you.

415 University Dr.
College Station

9:00-5:30
Mon.-Sat.

... EVEN THE LONE RANGER RODE WITH TONTO

YOU'RE BOUND TO HAVE MORE FUN WHEN YOU GO WITH A GROUP!



Want more rather than less for a change? Then try Greyhound Charter and get more — economy, fun, and companionship.

CHARTER US — WE'LL GET YOU IN TOUCH, AND IT WON'T TAKE MUCH!

Greyhound Bus Station 1300 Texas Ave. 823-8071

Greyhound
A change for the better.

Greyhounds in touch with America