

# Simonini, Ten Napel get award

By DENNE H. FREEMAN  
Associated Press  
DALLAS — Texas A&M's dynamic linebacking duo of Ed Simonini and Garth Ten Napel are The Associated Press' co-defensive players of the week in the Southwest Conference and about the only difference their coach can find in them is that Ten Napel runs interceptions back better.

Melvin Robertson, the braintrust for collegiate football's No. 1 defense, said, "Ed and Garth played about as good a game as I've ever seen two linebackers play against LSU."  
Simonini made 11 tackles and Ten Napel had 14. Each defender had an interception and also sacked the LSU quarterback for long losses in a 39-8 slaughter.  
The Aggies have allowed only 198 yards total offense in victories over Mississippi and LSU.  
Robertson said, "Garth ran his in-

terception back 24 yards which was real good. Now, Ed just kind of fell down with his like he was recovering a fumble. He said he did that because he missed an interception last year by trying to run with the ball before he caught it."

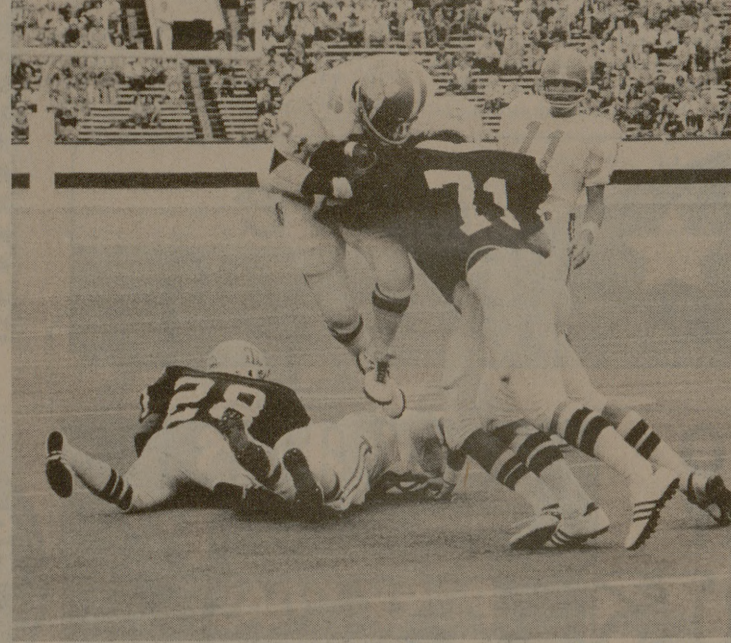
Simonini is a senior All-American while the All-SWC Ten Napel was The AP's lineman of the week once in 1974. Ten Napel also is a senior.  
Robertson said the brawny Aggies play a gambling style of defense which is designed to keep the

players from getting bored.  
"It seems if you play just a regular containing defense the kids don't appear to be fired up," Robertson said. "We do a lot of things that gives a player a chance to make the big play. Both Simonini and Ten Napel trapped the quarterback on linebacker blitzes."  
"Ours is a big play defense," Robertson said. "We gamble a good bit, but it's a calculated gamble. We have all the receivers accounted for."

Robertson said one thing that went almost unnoticed in the victory over LSU was that All-American cornerback Pat Thomas only played three downs.  
"Pat had a bad sprained ankle and we played Tony Blankenship who had only been on the specialty teams," Robertson said. "He did a good job although he got one pass caught over him."

Robertson added, "We have a lot of fun down here in practice... it's not loosey goosey because football is a serious game. But we've got pride and that builds success which builds enthusiasm."

"Ole Ed and Garth play with an awful lot of enthusiasm."



Garth Ten Napel makes the stop on the ball carrier during last year's win over Clemson.



Ed Simonini goes over the top to block a punt during last year's

first loss of the season to Kansas.

## SMU's Baker is suspended

Associated Press  
DALLAS — Southern Methodist defensive end Leroy Baker, suspended indefinitely by Coach Dave Smith this week, was arrested and charged with misdemeanor possession of marijuana by the suburban Highland Park police Sept. 18.

Records in the district attorney's office show the misdemeanor charges were filed the same day in a county criminal court.

Smith said Baker, a freshman starter from Dallas, was suspended for "disciplinary reasons."

"I'd rather not comment further," Smith said.



## If you covet the best, you can afford to have it.

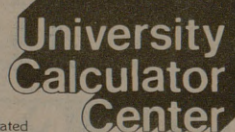
HP-21. This scientific calculator weighs a mere 6 ounces and slips effortlessly into your shirt pocket. Though smaller than most, it solves a remarkable range of problems. All the basic arithmetic and scientific functions... including logarithmic and trigonometric calculations. Choose degree or radian mode. Polar/rectangular coordinate conversion. A separate addressable memory with full register arithmetic. Automatic decimal point positioning capability with selective round-off. It even spells ("E-r-r-o-r") when you've asked it to do the impossible! Includes accessories and of course, Hewlett-Packard's uncompromising quality. \$125.00.



HP-21 From HEWLETT-PACKARD, manufacturers of the most advanced, quality calculators in the industry.

## LOUPOT'S

Northgate  
Across From The Post Office



© 1975 Application Calculators Incorporated

## Win two free tickets to the Cotton Bowl

The Battalion sports department is holding a contest to determine the exact time at which Bubba Bean will become the greatest all-time rusher in A&M history. The prize will be two tickets to the Cotton Bowl.

Contestants should put the game, the quarter, the minute, and the second they suspect Bean will cross the barrier.

Bean needs 381 yards to move ahead of Bob Smith.

All entries must be postmarked no later than Friday, Sept. 26.

## THE RED LION

3606 COLLEGE AVE.

- DANCING
- BEST PIZZA
- IN AGGIELAND
- NO COVER CHARGE
- BEER & SET-UPS
- GAME ROOM

Wednesday Special:  
\$1.00 Pitcher  
BEER (8-12)

Opening Soon!

**Petal Pushers**  
846-6713 707 TEXAS COLLEGE STATION

**El Chico**  
Serving The Finest In  
**MEXICAN FOOD**

**Happy Hour Prices**  
5 p.m. - 7 p.m. Daily

EL CHICO COCKTAILS .....\$1.00

3109 TEXAS AVE. 823-7470

## Engineering & Office Supply

CORP.

1412 S. Texas 846-4754  
REDMOND TERRACE SHOPPING CENTER

402 W. 25th BRYAN 823-0939

**ALL chartpak® TRANSFER LETTERING AND TAPES 20% OFF**

STUDIO-LINE  
MAGIC MARKER  
PRISMA-COLOR  
MARKERS & PENCILS  
**20% OFF**  
SALE GOOD THROUGH OCT. 1

## RIDE ON!

Sales Center For:

PEUGEOT  
RALEIGH  
BICYCLES  
FOLLIS

Bicycle parts & accessories  
WE SERVICE ALL MAKES OF BICYCLES

**CENTRAL CYCLE & SUPPLY**  
3505 E. 29th St. — 822-2228  
Take East University to 29th St. (Tarrow Street)

## ATTENTION FRESHMEN

The Town Hall Committee is in desperate need of eight freshmen to serve as committee members this year. Membership will be decided from an application and a short interview. Applications and interview times are available in the student programs office in the MSC until Friday, October 2, 1975 at 5:00 p.m.

Here is a chance to get involved on campus and step into the MSC Circle. Join Town Hall today.

step into the msc circle

HOUSE OF TIRES HOUSE OF TIRES

## HOUSE OF TIRES

CORNER OF COULTER & TEXAS  
822-7139

5 LOCATIONS TO SERVE YOU  
BRYAN-COLLEGE STATION, PASADENA, HOUSTON, CONROE, KILLEEN.

**WE WON'T BE BEAT ON QUALITY OR PRICE BY ANYONE!**

---

## DUNLOP

40,000 MILE STEEL RADIAL

**\$39.99**  
ANY SIZE IN STOCK

---

**Back To School Savings**

## 4 PLY POLYESTER

WHITEWALLS

**\$24.99**  
E 78-14  
F 78-14  
plus taxes

---

## IMPORT SPECIALS

**\$33.95**

PHOENIX 40,000 MI. STEEL RADIAL  
155X12-165X13-175X14-155X15  
155X13-173X13-185X14-165X15

ANY SIZE LISTED

---

**5% CASH OR CHECK DISCOUNT**  
(not including charges)

**ALSO Bill Bueller WESTERN MAG WHEELS**

"WHERE QUALITY COSTS YOU LESS"

HOUSE OF TIRES HOUSE OF TIRES