

THE COLLEGE PROTECTOR PLAN

CONTINUES TO BE THE UNDISPUTED LEADER

IN HELPING TEXAS AGGIES ACHIEVE FINANCIAL SECURITY



THE COLLEGE PROTECTOR IS A SPECIAL PLAN DESIGNED FOR THE ABOVE AVERAGE STUDENT WITH MATURE GOALS FOR THE FUTURE



THOMAS ASSOCIATES

520 E. UNIVERSITY DR. COLLEGE STATION

FOR INFORMATION: CALL ONE OF OUR REPRESENTATIVES

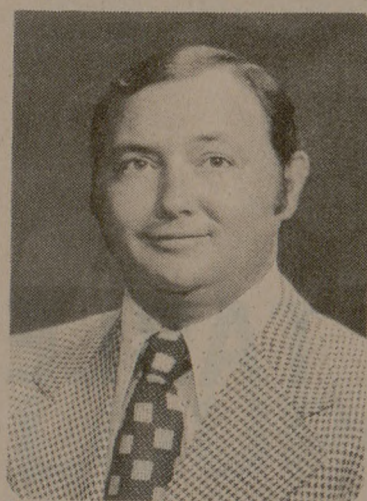
846-7714

Facts About the College Protector:

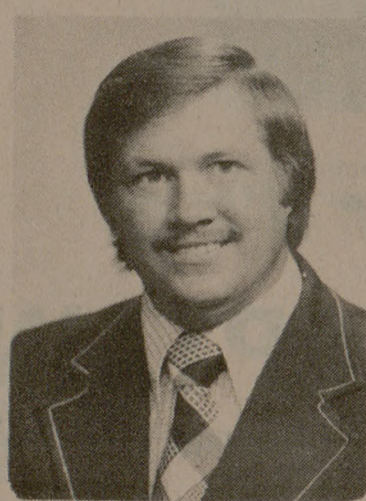
1. Premium Payments May Be Deferred Until Your Earnings Increase, but Fixes Present Age Rate, Thereby Saving 4% - 5% in Increased Premium Payments.
2. Builds Cash to Cope With Financial Emergencies & to Take Advantage of Financial Opportunities.
3. Helps Establish Peace of Mind in Knowing That Cash Will Be Available For Retirement.
4. Increasing Death Benefits to Help Offset Inflation During Estate Building Years.

Facts About Protective Life Insurance Co.:

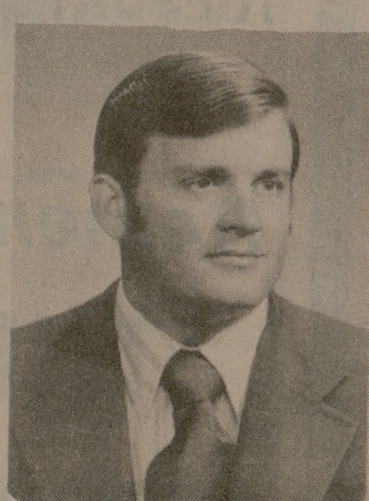
1. Multi-Billion Dollar Company That Has Been in Business Since 1907.
2. Has Consistently Been Given The "Highest" Recommendations by The Recognized Insurance Authorities.
3. Ranks in The Upper 5% of The Nation's 1800 Life Insurance Companies.
4. Has Both Participating & Non-Participating Policies Available to Fit Client Needs.



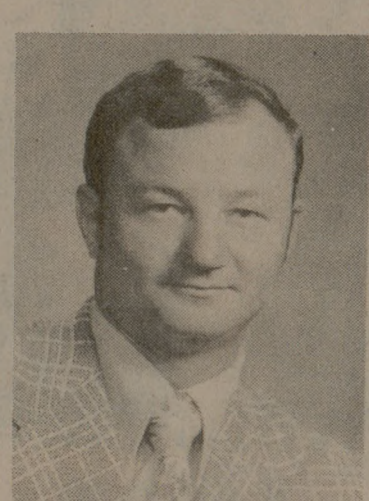
CHARLES THOMAS



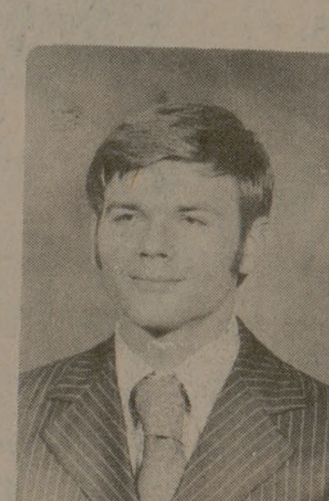
GLENN THOMAS



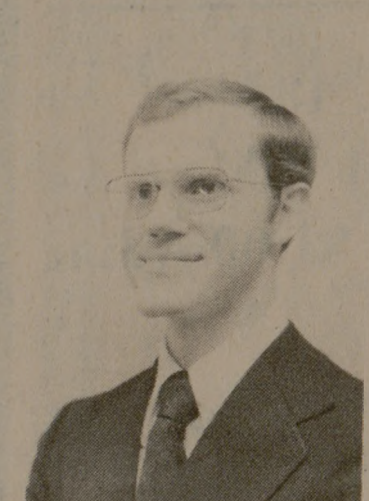
DOUG WEEDON



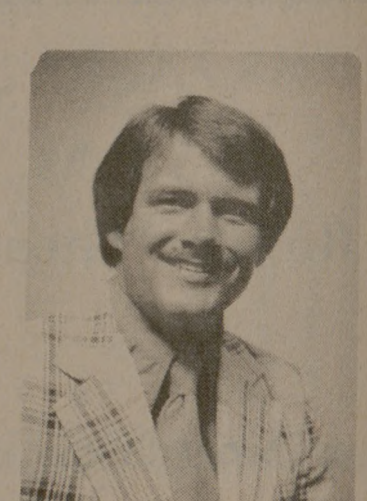
JERRY PETRASH



MIKE NIELSEN



IVAN HINDERER



BARRY NELSON

PROTECTIVE LIFE®
INSURANCE COMPANY
HOME OFFICE - BIRMINGHAM, ALABAMA