

# Dunn greets newest Ags

By JEFF DUNN  
S. G. President

Welcome to A&M. From this time forth you will be identified as a Texas Aggie, and as you become involved in the spirit and tradition that surrounds our university, you will recognize why Aggies have that unique bond of brotherhood and loyalty. The years you spend at A&M will leave a lasting imprint throughout your life, and I encourage you to make the most of them by defining your goals and searching for your ideals.

As you begin your freshman year, remember not to let your schooling get in the way of your education. Learn about the many diversified student activities that we have at Texas A&M and make an effort to participate in them. Involvement in student organizations not only makes you a more rounded person, but it en-

hances the brotherly atmosphere of Texas A&M.

Your Student Government is challenged with the responsibility of representing the diverse interests of the student body. We are involved in virtually all areas of university life, and we have even stretched our influence into the Bryan-College Station community. For information concerning our projects and programs, or information concerning student rights and legal hassles, please do not hesitate to call on us. We are located in Room 216 of the Memorial Student Center.

This year Texas A&M has much to look forward to in terms of a tremendous football season and the coming Centennial, and I sincerely hope that this year will bring you happiness and success to you as well.



JEFF DUNN  
Student Government President



# Yell practice leads fall football fever

By MARY RUSSO  
Campus Editor

"Yaeh."  
"A-a-a Ole Army."  
"Yaeh."  
"Got a fable for ya Army."  
"Get grodey."  
And so the ritual of yell practice continues.

Led by their elected yell leaders, students gather to practice the time-honored fighting threats that have become a trademark of Aggie football fever.

There are three types of yell practices: those held Tuesday and Thursday evenings at the convenience of the Corps of Cadets, those held at midnight the night before the game and those held after the game.

The tradition of midnight yell practice was started on the eve of the Texas-A&M game, 1932. The upperclassmen thought it would be "good bull" (an expression used to justify almost anything) to rouse the fish for a yell practice. Before long most of the campus had gathered on the steps of the Y building.

Today, the cadence is blown by the brass and as the band sweeps by the crowd, the masses fall in behind it.

It is wise to stay away from the band and dangerous to try to infiltrate its ranks. The band will protect its unity quickly and a trombone slide in the month is painful. During the arm-to-shoulder pro-

cession, women should guard their backs because the fish (freshman) tradition, the "pinch", more appropriately called the "grab", is being practiced.

As the crowd approaches Kyle, the rapid forward motion is slowed. Great caution should be taken because people are knocked down, shoes are kicked off and shoulders are separated at this point. Those who fall down may be trampled.

Kyle Field is open before the procession arrives and some choose to avoid the rush and get places early. The bottom of the horseshoe is the best place to hear what is going on. The yell leaders traditionally don't use microphones and they can't be heard when they get in "the hole."

After singing the war hymn, doing a few yells and hearing a few fables (humorous sermonettes by the yell leaders), another Aggie tradition is cleared of mothballs.

Since Aggies award their dates with a kiss each time the team puts points on the scoreboard, at midnight yell practice the lights are dimmed and scoring practice commences.

Fish light matches to spotlight their favorite upper-classmen when the lights are out. The books say that the fish light matches to show their burning desire to beat the opposing team.

Another highlight of yell practices is the juniors doing their class

number in pushups. This happens after a junior yell leader decides the crowd is going to beat the junior class hell out of the opponents of the week. This is strictly a senior privilege.

Fish are forbidden to watch this display so the sophomores attempt to distract the fish.

The whole affair takes about thirty minutes and is rounded out with "Fifteen for team, farmers fight, call it a night."

The Tuesday and Thursday practices are not as emotion-packed as the midnight yell practice. They also tend to be very Corps-oriented because so few non-Corps people attend them.

After-the-game yell practices can be happy or sad.

If the team wins, rather than carry the team members off the field, the yell leaders are chased down and carried to the nearest body of water.

Today, this is the University Center fountain. In the past it was the fish pond across from Shiba Dining Hall.

From the steps of the nearest building (formerly the Y Building and now the Rudder Complex) the soaking-wet yell leaders conduct a yell practice.

Upon losing a game, the Ags stay in the stadium and the yells are done once more to show the team that the fans still support them.



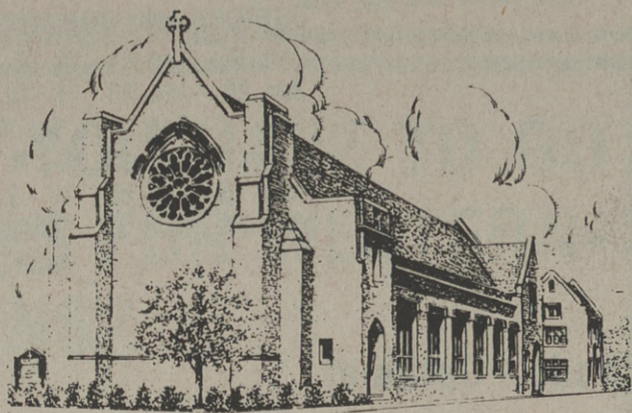
Midnight Yell Practice

Aggies get prepared for the weekend's game by practicing "the weave" of the fight song.

# THE A&M UNITED METHODIST CHURCH

SERVING TEXAS A&M UNIVERSITY

BOB E. WATERS  
PARISH MINISTER  
LARRY J. GRUBBS  
CAMPUS MINISTER  
ROY B. SHILLING  
EVANGELISM MINISTER



8:30 & 10:50 - MORNING WORSHIP  
9:40 - CHURCH SCHOOL CLASSES  
6:00 - WESLEY SUPPER  
7:00 - WESLEY VESPERS  
8:00 - RECREATION  
EACH SUNDAY



WORSHIP



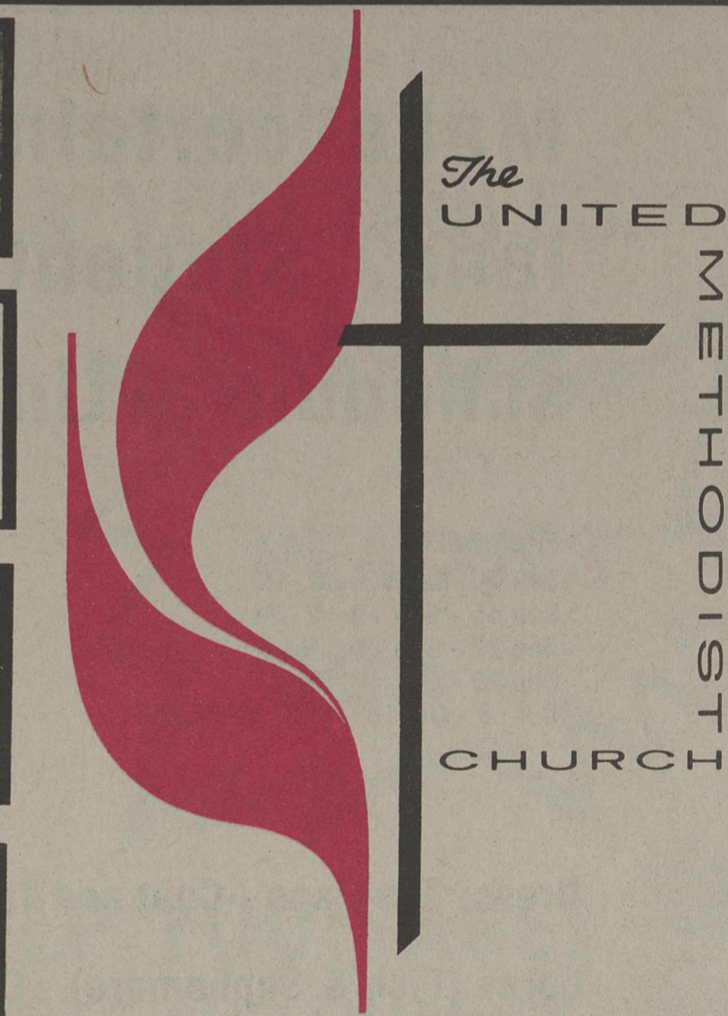
STUDY



SERVICE



OUTREACH



The UNITED METHODIST CHURCH



RECREATION



STUDENT AID

The A&M United Methodist Parish includes both A&M United Methodist Church and the student program — Wesley Foundation at A&M.

The A&M Methodist Church is a great and warm church, fully ready to serve you and meet your needs. It welcomes students to become a part of the total life of the church and would welcome your membership, either full or affiliate.

The Wesley Foundation is the student program of the A&M United Methodist Church. Wesley is a community of faith where students may grow in faith, gain support and leadership ability, and build priorities and principles for life.

Wesley programs include worship, study, service, outreach, recreation, and student aid.

You will have many opportunities to meet Wesley leaders this fall. Our campus minister and many student counselors will be at "Fish Camp." Just look for the "Cross & Flame" emblem on our shirts.

At the M.S.C. Open House Wesley will have a booth, so come by. Then on Sunday morning, August 31, meet us at the All Faiths Chapel at 9:30 for an introduction to our program & upper classmen. Finally, that Sunday evening at 7 p.m. we will host a pie supper at the church. Come meet us.

A&M UNITED METHODIST CHURCH—417 UNIVERSITY DRIVE • WESLEY FOUNDATION—TABOR STREET