

THINK BUFFALO

COME TO THE MSC CAFETERIA WITH ALL YOUNG CHIEFS AND INDIAN PRINCESSES TO GREAT POW WOW. ORDER ROAST BUFFALO AND BE INITIATED IN THE ROYAL ORDER OF BUFFALO HUNTERS. THIS IS REAL BUFFALO... NO BULL. ALL WHO PASS THE TEST WILL BE PRESENTED WITH AN INDIAN HEADBAND.

Because of the great interest of our customers to have a taste of the past, Buffalo will be served again this spring and summer. It is the opinion of many that the Indians had a good thing going with the Buffalo. There are many other tasty items on the menu each meal, but no matter what you desire stamped to the MSC Cafeteria.

EACH EVENING \$1.49
4:30 p.m. - 7:00 p.m.

"Quality First"



'Prairie Film'

The worker in the above picture is mixing glue to be used in preparing 'Prairie Film' a rock aggregate. The mixture is being used for sidewalk construction across the campus. The 'Film' is porous allowing water to reach the roots of the nearby plants.

TAMU given funds for financial seminars

The Coordinating Board of the Texas College and University System has given TAMU a \$30,000 grant to conduct a series of five workshops on small city accounting procedures.

The workshops are being held under the direction of TAMU professor Bill Blackwell.

"There is a great need for the program and it's needed now," said Blackwell. "It has been prepared for anyone with accounting and finance responsibilities in the city."

"We held a test six-day workshop in Arlington during March," he said. "It was such a success that we've got the next five laid out and expect to reach more than 150 municipalities with the workshops."

"Because of the small size of the towns and the resulting obligations on each official's time, the workshops have been scheduled in two three-day sections," Blackwell said. "In each section, two days are taken out of the officials work week and one from his own time by scheduling it on Thursday, Friday, and Saturday."

"Part I introduces participants to the principles of municipal accounting and budgeting," he said. "Emphasis will be placed on involving each participant in actual practice of elementary accounting and budgeting techniques."

"The second part provides extensive practice in municipal accounting techniques including fund accounting and preparation of annual reports," Blackwell said. "Extensive use of case studies will provide an understanding of the role of a modern accounting system in the local government."

Arlington will have the first regularly scheduled workshop September 17-20 and October 2-4.

Kilgore and Baytown will each have a workshop October 9-11 and October 16-18.

Amarillo and Odessa are sites for workshops Oct. 30-Nov. 1 and Nov. 13-15.

Four more of the programs are scheduled for other areas of the state.

Instructors in the program include Dr. Larry Pointer, Dr. Robert Strawser, and Dr. James Benjamin, all of the Department of Accounting, and Dr. Eugene B. Smith from the Department of Business Analysis and Research.

"Emphasis will be on learning by doing," Blackwell said. "Also lectures, exercises, problems and group discussions will be used. The lecturer will provide groups and individuals assistance and solutions to all problems and exercises will be provided during the workshop."

Chinese cabbage may have future on small farms

PRAIRIE VIEW — Chinese cabbage, or pe-tsai, is being studied at PVAMU because of its potential for the limited-resource farmer.

The cabbage has been introduced to Texas' Gulf Coast Prairie by horticulturist Yun-ping Chang of PVAMU. He believes it has a market potential in Houston.

Currently, no pe-tsai is grown commercially in Texas. However, Houston has a weekly demand of over 10 tons. This demand is met by transporting the cabbage from California at a cost of \$2-\$8 per crate.

While demand in Houston is not great, it is constant and can be increased, said Chang.

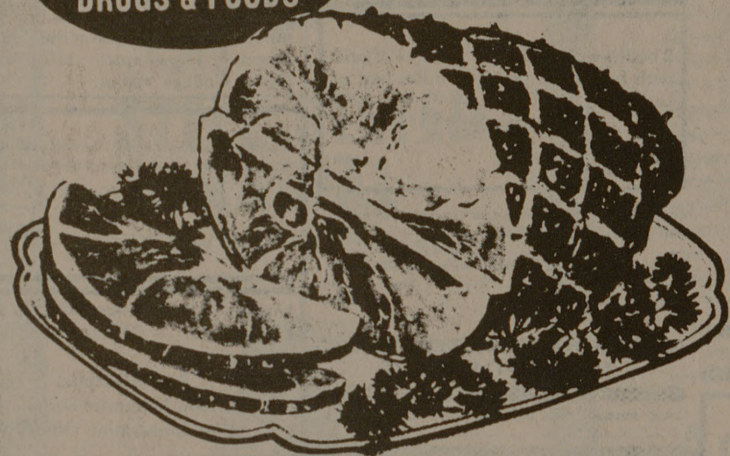
Chang is testing 10 types of pe-tsai to determine the best kind for the Gulf Prairie.

The cabbage is little-known to Americans although it has been cultivated in China since the 5th Century.

SKAGGS ALBERTSONS DRUGS & FOODS

SUMMER FOOD SPECIALS!

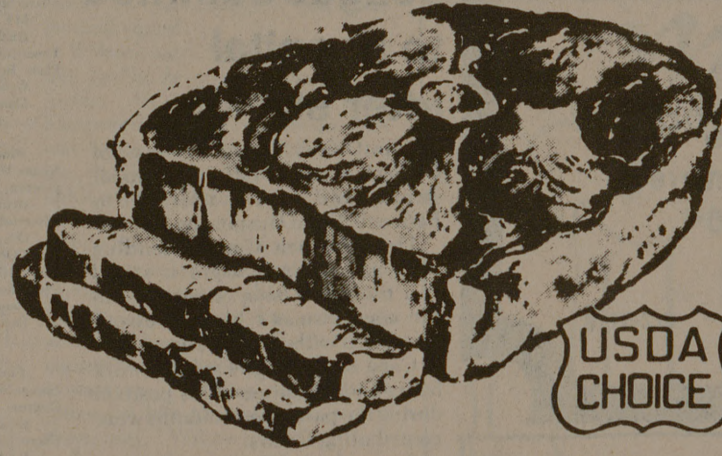
SPECIALS GOOD WED., THUR., FRI., SAT., AUG. 6, 7, 8, 9, 1975



HAMS

SMOKED WATER ADDED SHANK PORTION 87¢
BUTT PORTION 97¢

- RED SNAPPER-BONELESS FILLETS BROIL OR PAN FRY 1.39
- SKAGGS ALBERTSONS SWISS CHEESE 1.89
- BIG EYE SWISS 1.89
- JANET LEE-OUR FINEST WIENERS 12 OZ. PKG. 68¢
- GLOVER'S SMOKED SAUSAGE 79¢
- HOT LINKS 79¢
- SLICED-DECKER QUALITY BOLOGNA 12 OZ. PKG. 75¢
- SLICED-DECKER QUALITY SALAMI 12 OZ. PKG. 75¢
- SLICED-NICE EVEN SLICES NO CHUNKS BEEF LIVER 79¢
- U.S.D.A. CHOICE BEEF BEEF CHUCK, CENTER CUT CHUCK STEAK 98¢



STEAK

SWISS 1.18
U.S.D.A CHOICE BEEF BEEF CHUCK ARM

GOLD MEDAL FLOUR 5 LB. BAG 58¢

PURE COTTAGE CHEESE 1 LB. CTN. 44¢

KRAFT ORANGE JUICE 32 OZ. BOTT. 39¢

ALBERTSON'S INSTANT TEA 3 OZ. JAR 89¢

BLUE BONNET OLEO QUARTERS 1 LB. PKG. 39¢

GLAD WRAP FOOD WRAP 100 CT. PKG. 33¢

DELICATESSEN-SNACK BAR BUCKET OF CHICKEN 5.99
• 16 PCS. GOLDEN FRIED CHICKEN
• 1 LB. MASHED POTATOES • 1 DOZ. ROLLS
• 1 PT. CREAMY GRAVY
HOT LINKS SPICY 5 LINKS \$1

JANET LEE LARGE AA EGGS 1 DOZEN 59¢

LIQUID DETERGENT 32 OZ. BOTT. 39¢
HYDROX COOKIES 19 OZ. PKG. 69¢
POUND CAKE 17.5 OZ. BOX 65¢

INSTORE BAKERY! ANGEL FOOD CAKES UNICED LARGE 98¢ EA.
HARD ROLLS PLAIN OR SEEDED 30 FOR \$1
BANANA CREAM PIE LARGE 8" SIZE \$1.49 EA.
CHOCOLATE ECLAIRS LARGE 2 FOR 49¢
PEANUT BUTTER COOKIES 3 DOZ. 99¢


FROZEN FOODS POPSICLES 6 PKG. 29¢
PIZZA LAMBRECT-CHEESE SAUSAGE-PEPPERONI HAMBURGER 12 OZ. PKG. 69¢
POTATOES ALBERTSON'S SHOESTRING 20 OZ. BAG 39¢
CORN-ON-COB FLAV-R-PAC 4 CT. BAG 59¢

FARM FRESH PRODUCE GOLDEN CORN FULL EARS 10¢ EA.
TOMATOES VINE RIPE 39¢ LB.
CARROTS VITAMIN RICH 2 LB. CELLO 49¢
ZUCCHINI SQUASH DELICIOUS FRIED OR BROILED 3 LBS. \$1
GRAPEFRUIT RUBY RED 3 FOR \$1
OKRA LOCAL GROWN TOP QUALITY QUART BASKET 49¢

WE WELCOME U.S. FOOD STAMPS SKAGGS ALBERTSONS DRUGS & FOODS

301 S. College Monday thru Saturday 8 AM to 12 PM Sunday 9 AM to 10 PM

A Perfect Diamond.  Keepsake Registered Diamond Rings
EMBREY'S JEWELRY
415 University Dr. 846-5816

 ST. JUDE CHILDREN'S RESEARCH HOSPITAL
HELPING CHILDREN LIVE THROUGHOUT THE WORLD
Please help us
Send contributions to: MEMPHIS, TENN. 38101

WE CARE ABOUT YOU