

LAKEVIEW CLUB

3 Miles N. on Tabor Road

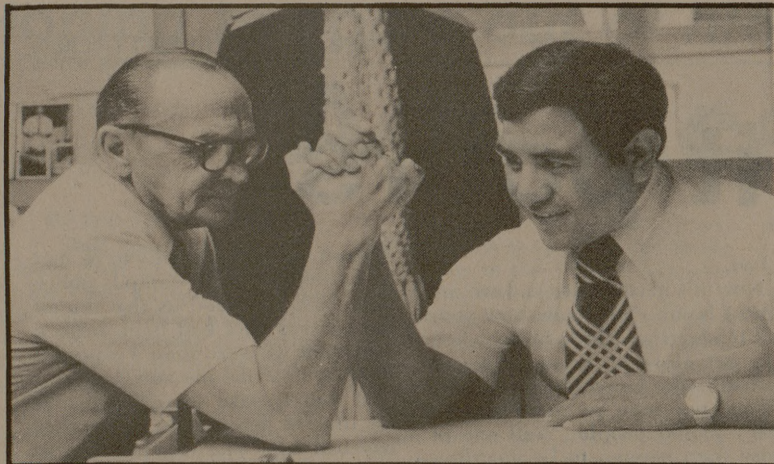
Saturday Night: Jim Ed Brown & The Gems with the Cate Sisters
From 9:15 p.m.

STAMPEDE Every Thursday Nite
(ALL BRANDS BEER 35 cents)

Every Tuesday Nite

LADIES FREE All Brands Beer 35c 8-12 MEN \$2.00

Music furnished by the Brazos Sounds



Henry Wellnitz (left) and Al Valdez once boxed for a living and were proud members of the 1st Infantry Division and 173rd Airborne, respectively. Now manager and assistant manager of Duncan Dining Hall at Texas A&M, they leave the gloves on the peg when they disagree.

Summer cruise expects 14 girls

COLLEGE STATION — In three weeks the midshipmen of the Texas Maritime Academy will begin their annual two-month summer cruise with a bumper crop of coeds aboard.

Dr. William H. Clayton, provost of Texas A&M University's TMA, said at least 12 to 14 girls will be among the 200 students expected aboard the 15,000-ton Texas Clip-

per when it sails June 8 for a cruise around the Caribbean and Gulf of Mexico.

Many of the students will be sophomores, junior and senior cadets who operate the ship under the supervision of the academy's officers and staff.

Others will be participants in TAMU's "Summer School at Sea" and earn up to six hours credit in mathematics, English, history, and geography.

Satellite communications gear will be aboard for transmission of experimental data. An Automatic Picture Transmission Satellite will furnish them with infrared and visible pictures from space.

They will also conduct ground truth rain rate experiments for NASA. Satellite rain measurements from space will be correlated with actual shipboard measurements.

Surface measurements will be taken with precision radiation thermometers, measurements of temperature and water depth will be taken by electronic bathythermography, in addition to chlorophyll content of the water, salinity, and wind speed.

Itinerary for the two-month jaunt includes Mayport, Florida, where the cadets will participate in a firefighting school, then on to Santo Domingo, Dominican Republic; Caracas, Venezuela; St. Nicolaas, Aruba; Kingston, Jamaica; Miami, Florida; back to Houston August 3 and the final leg to Galveston August 4.

Now a new way to save money at FedMart

U.S.D.A. Inspected **CALF** It's lean!
It's nutritious!
It costs a lot less than beef.

The price of beef is very high again. But now you can do something about it. Serve your family FedMart's U.S.D.A. Inspected Calf. Check our prices below and you'll find that Calf costs you substantially less than heavy beef, especially at FedMart's low prices. It's a great way to give your food budget a lift.

FedMart's Calf is about eight months old. It's younger and leaner than mature, heavy beef with a greater proportion of tissue and less fat. Your family will like it and you'll like the savings. And because Calf is primarily grass-fed, it makes more grain available to help feed the world's hungry.

Of course, FedMart continues to offer you U.S.D.A. Choice beef at lower prices than you'd find elsewhere.

Grocery Savings

1 gal. carton
FM Low Fat Milk .. \$1.20

16 oz. pkg.
Individually Wrapped
FM Cheese Food .. \$1.17

Wisconsin Mellow
FM Cheddar
Cheese \$1.31 lb.

1 lb. package
Rath Bacon \$1.39

1 lb. package, Oscar Mayer
Ham Steaks \$2.39

9 oz. pkg.
Morton Honey Buns 59¢

12 oz. pkg.
Downy Flake Waffles .. 53¢

17 oz. pkg., Sara Lee
Cheese Cake \$1.39

24 oz. pkg.
Gorton Fish Sticks ... \$1.67

1 lb. pkg.
Gorton Perch Fillets ... 97¢

32 oz. jar
Kraft Miracle Whip ... \$1.13

9 oz. can, Twin Pack
Pringles Potato Chips .. 83¢

Produce Savings

Large Size, California
Avocados 29¢ ea.

California
Valencia Oranges . 23¢ lb.

Large Stalks
California Celery .. 29¢ ea.

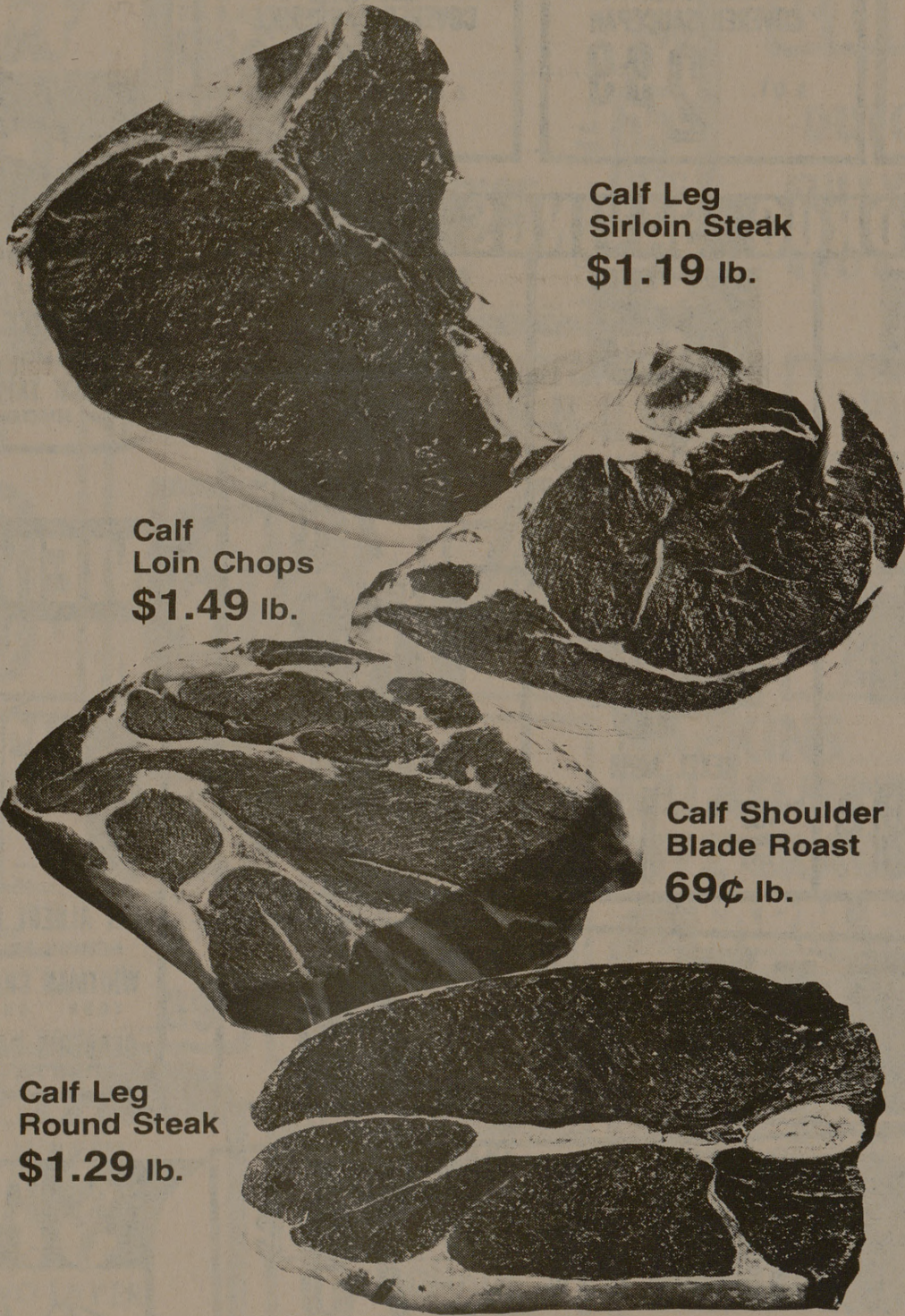
8 lb. bag, US #1
Russet Potatoes 89¢

Yellow Onions 19¢ lb.

8 oz. package
Fresh Mushrooms 59¢

Firm Heads
Green Cabbage 14¢ lb.

Sunkist Lemons . 12 for 59¢



Calf Leg
Sirloin Steak
\$1.19 lb.

Calf
Loin Chops
\$1.49 lb.

Calf Shoulder
Blade Roast
69¢ lb.

Calf Leg
Round Steak
\$1.29 lb.

Calf Leg Tip Steak \$1.49 lb.	Calf Shoulder Blade Steak 79¢ lb.
Calf Rib Chops \$1.19 lb.	Calf Shoulder Arm Roast 89¢ lb.
Calf Cubed Steak .. \$1.69 lb.	Calf Leg Rump Roast 99¢ lb.
Calf for Stew \$1.19 lb.	Calf Breast 49¢ lb.

For eight interesting, different, economical, and delicious meat dishes, pick up a free Calf recipe folder at the Calf display at FedMart.®

Monday thru Friday 9:30 AM to 7 PM/Saturday 9:30 AM to 6 PM/Closed Sunday

The Consumer's Friend Since 1954

FedMart
Family Savings Centers

701 University Drive East (at Tarrow St.), College Station

Prices effective thru Tuesday, May 27, 1975.

Grocery Savings

29 oz. can, Heavy Syrup
FM Fruit Cocktail ... 59¢

48 oz. bottle
FM Vegetable Oil .. \$1.59

32 oz. bottle, Lemon-Lime
Gatorade 45¢

46 oz. can
FM Apple Juice 65¢

2 lb. carton, Kraft
Velveeta Cheese \$1.53

28 oz. bag
Adolphus Rice 62¢

18 oz. bottle, Garden Club
Grape, Strawberry, Plum, Blackberry

Apple Base Jelly 59¢

20 qt. box
FM Non Fat Dry Milk . \$3.89

Box of 100, Filter Thru
FM Tea Bags \$1.07

24 oz. jar, Garden Club
Salad Mustard 39¢

1 gal. bottle, Rich'n Ready
Breakfast Orange Drink 89¢

17 oz. can, Very Young
FM Sweet Peas 33¢

Household Savings

20 lb. box, Low Foam
FM Detergent \$4.45

84 oz. box, 25¢ Off Label
Cheer Detergent .. \$1.87

21 oz. can
FM Cleanser 26¢

15.5 oz. can
Marvel Dog Food ... 14¢

61 oz. box
Clorox II \$1.27

32 oz. bottle, 25¢ Off Label
Listerine \$1.57

Flicker Shaver \$1.25 ea.

Relocation; Partially good, partially bad

COLLEGE STATION — Researchers have found that when the state of Texas decides to come through the middle of your house, it usually turns out to be partially good news and partly bad news.

A team of Texas Transportation Institute transportation economists at Texas A&M University analyzed the experiences of residents relocated from their homes as a result of highway location in several areas of the state.

Before relocation, monthly housing payments average \$50 for homeowners and \$80 for renters. After relocation, payments rose to \$90 and \$105, respectively.

Relocation housing payments approved under the 1970 Uniform Relocation Assistance and Real Property Acquisition Policies Act enabled many respondents to upgrade their housing and neighborhood accommodation. At least 60 percent upgraded their housing, including 40 percent who did so voluntarily by spending more than was necessary merely to secure decent, safe, and sanitary housing or housing comparable to their original homes.

About 82 percent of the respondents liked their new houses and neighborhoods about the same as or better than the previous ones. Supplemental housing payments also encouraged home ownership. Half of the tenants became owners after relocation.

Despite monthly housing payment increases for many households, only half of these thought that their financial position had worsened. Generally, most respondents thought that (1) housing and moving payments were adequate; (2) the relocation program and relationship with the State Highway Department were either good or very good; and (3) the State Highway Department successfully solved most of the problems and provided most of the services associated with relocation.

There IS a difference!!!

PREPARE FOR:

L
S
A
T

Over 35 years of experience and success

Small classes

Voluminous home study materials

Courses that are constantly updated

Make-ups for missed lessons

THOUSANDS HAVE RAISED THEIR SCORES

Call: 214 750-0317
or
Write: 11300 No. C. Exp.
Dallas, Tex. 75231

For class schedules

Stanley H. Kaplan
EDUCATIONAL CENTER
TEST PREPARATION
SPECIALISTS SINCE 1938
1675 East 16th Street Brooklyn, N.Y. 11229
(212) 336-5300
Branches in Major U.S. Cities