

# Civil systems planned for CS

**Broome's SUNSHINE LAUNDRY**  
3815 E. 29th St. — BRYAN, TEXAS 77801  
PHONE 846-7921  
Open 7 Days Weekly 7-10 Mon. - Fri. / 8-9 Sat. - Sun.  
SELF-SERVICE LAUNDRY  
COIN-OP DRY CLEANING  
PROFESSIONAL CLEANING & LAUNDRY  
WASH-DRY-FOLD SERVICE

**By HORACE GRANT**  
Contributor  
The city of College Station in March accepted a Comprehensive Development Plan for proposed improvements to the city. Pinnell, Anderson, Wilshire & Associates, Inc., an urban planning firm, has worked on the plan for three years and has made recommendations to the city regarding sanitary sewage systems, major thoroughfare and water distribution systems, police and fire stations, city hall and the organization of the city's administration. Plans determining land use in implementing these recommendations evolved from individual studies that have been made, Willie Koehler, College Station city planner, said. But none of these studies are independent of the others, he said.

"Land use depends on the city's capacity to serve it and the needs of the private market in its development," Koehler said. One thing of immediate importance is capital improvements, he said. The city council has to determine where they will get the money to implement these programs and which ones have the highest priority. The council will appoint on Monday, a Capital Improvements Committee. City manager North Bardell said this committee will do two things. "They will determine the priorities of the proposed development recommendations and also the starting dates of capital improvement projects." The project funds are derived from bonds and other sources such as the Environmental Protec-

tion Agency and the Economic Development Administration, Bardell said. One particular problem that the council runs into is time. "The city, just like any business, has to have some idea of where we are going in future years," Koehler said. For instance, the sanitary sewage system plant takes anywhere from three to four years from the time you start the design until the time it's in service, he said. "You can't wait until you are at capacity or over capacity before you start doing something. During the period of design, adjustments have to be made to keep pace with needs of that particular time," Koehler said. In a long range program, priorities will also have to change to keep planning flexible, he said.

Some of the proposals have been implemented long before the study was completed and the plan presented to the council. Koehler said the city made some changes in ordinances and some review processes in other ordinances in accordance with these recommendations. "We did not wait for the tablets to come down from Mount Sinai before we started implementing things that needed to be done and were worthwhile to do," Koehler said. The city works independently of the university in its expansion programs. Both are, for the most part, unaware of each others' activities until some conflict of expansion presents a critical problem, Koehler said.

"We have very little information as to what's going on out there," he said. "It's not terribly essential that we do have that information because the university provides so many of its own services." Even though the city operates independently, both the city and university cooperate with each other, he said. "We cannot dictate to the University nor them to us," Koehler said. With all the proposals submitted to the council, and the committee on capital improvements working at its best to adopt the proposals, the people of College Station should see some changes in their city in the near future.

**TEXAS A&M UNIVERSITY**  
75  
1876

A Diamond in your Aggie Ring... —the final touch.

Carl Bussell's  
**DIAMOND ROOM**

3731 E. 29 846-4708 MEMBER AMERICAN GEM SOCIETY



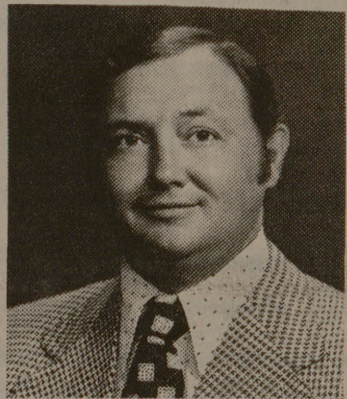
## 'Godspell' opens Could be best series ever

**By DON MIDDLETON**  
Staff Writer  
John the Baptist never looked sharper in his tails and high-topped tennis shoes and J.C. himself caused quite a stir sporting red, white and blue overalls and a "Superman" t-shirt. As for the rest of the cast of "Godspell," traditional togas and sandals were discarded for long underwear, multi-colored suspenders, basketball knee pads and a wide array of headgear as the Aggie Players took on their first major musical. Never were there so many smiling faces and honestly happy performers on the stage at A&M, and what the cast lacked in experience it made up in sheer enthusiasm. Twelve of the actors were making their first appearance with the Players, but without a program in front of me I couldn't point them out.

The musical numbers were elaborately choreographed, every song rating "production number" status. Several vocalists stood out as being extraordinary singer-performers, including Jean Fischer, Russel Harris and Jo Montgomery. When you go to see "Godspell," which I recommend you do, prepare for the unexpected—unless, of course, you don't think Jesus and John the Baptist doing a softshoe complete with canes and straw skimmers is unusual. Maybe you expect to see a group of distinguished philosophers ranging from Socrates to Buckminster Fuller singing and dancing in a boxing ring. I didn't. Nor did I expect to be invited down on the stage during intermission by J.C. for wine. And even though the pagan pink Ripple I expected turned out to be Hawaiian Punch, it was the first time I had seen an audience dancing and singing with the performers.

The music for "Godspell" was arranged and conducted by Brian McPherson, and together with musical director "Su the Boo" Rudd the score was another shining star. On the technical end, the imaginative lighting and set construction created many interesting effects, and the directors utilized all areas of the stage and the aisles to bring the audience closer to the actors. The Players heartily deserved the standing ovation they received. Even the rushed lines, dropped cues and dialogue that dragged didn't keep the evening from being time well spent. Opening night jitters are easily overlooked when it's obvious that the actors are excited about what they're doing. Several other members of the cast deserve recognition for outstanding performances, including Neil Badders as John the Baptist and Celina Ellington who played a convincing "lady of the evening" type. Philip Hafer, Cheri Lindquist, Jim Aldrich as J.C. and Michele McCormick also turned in excellent performances. It looks as though the Aggie Players have hit upon a style of theater that they not only can do well, but that Aggie audiences are likely to appreciate, if Thursday night's group is any indication. Hopefully we'll be seeing more musicals in the coming year.

**MSC Cafeteria**  
**SWEET SHOP**  
now featuring  
Beautiful, Taste Tempting  
**CAKES**  
Made to Order and  
Decorated to Suit Your Individual Needs for  
**BIRTHDAYS WEDDINGS**  
And Other Special Occasions  
Choose a delicious pie or cake from our attractive display or place an order for your next special occasion or call  
845-1118  
"QUALITY FIRST"



### Charles E. Thomas

Charles E. Thomas & Associates  
520 East University Drive  
College Station, Texas 77840

has completed all the requirements to be certified as a

**Qualifying & Life Member**  
of the  
**1975**

### MILLION DOLLAR ROUND TABLE

an independent, international association of life insurance agents. Membership reflects a commitment to continuing advanced education to better serve the financial security needs of families, individuals and businesses.

**PROTECTIVE LIFE INSURANCE COMPANY**  
HOME OFFICE - BIRMINGHAM, ALABAMA

*Jerry Jeff,  
Waylon &  
Willie*

Sunday, April 27  
Austin, Texas

Go to corner of Ranch Rd. 2222 & City Park Rd. for directions



TICKETS AVAILABLE AT  
**HOUSE OF JEANS**

**THE BULL CREEK PARTY**  
Date: Sunday, April 27  
Time: 11 am - 8 pm  
Place: Austin, Texas. Outdoors in a new concert site on a 1200 acre ranch. Corner of Ranch Road 2222 and City Park Road.  
Parking: No parking hassles near the concert  
Refreshments: Beer, food & cokes.  
Tickets: \$7.00 in advance. \$8 at the gate.  
For more information, call (512) 454-1796  
**JERRY JEFF WALKER, WAYLON JENNINGS, & WILLIE NELSON (and friends).**  
**BULL CREEK PRODUCTIONS, INC.**

**THE CLOTHES YOU NEED FOR THE LIFE YOU LEAD ARE AT VILLAGE CASUALS**

Great selections in Jrs and misses sizes! Dresses — Long and short Pant Suits — slacks — shirts — blouses — skirts — tops — jumpers — shorts

**Village Casuals**  
Manor East Mall — Bryan