

# Data reveals increasing woman orientation

Recent data analysis indicates Texas society may become increasingly more woman-oriented in the future. According to a 1974 report released by Robert L. Skrabanek, a Texas A&M professor with the Texas Real Estate Research Center and the Department of Sociology and Anthropology, there is in Texas a very important trend from male to female predominance in numbers. Statistics indicate this is a worldwide occur-

rence in industrialized nations. The changing balance between the sexes becomes a matter of special interest when considered with the recent increasing interest in women's rights movements. A simple measure used to indicate the sex composition of a population is the sex ratio, which is defined as the number of males per 100 females. Since 1890 the number of females in Texas has been consistently growing

at a faster rate than males. The sex ratio in Texas in 1890 was 111 males for every 100 females. It nearly became balanced in 1950 when it reached 100.4. Ten years later when the sex ratio was 98.1, there were more females than males for the first time in the state's history. By 1970 there were only 95.9 males per 100 females and the sex ratio is projected to drop to 93.8 by 1980.

Skrabanek cites the lower female mortality rate as the major reason for the increase. For babies born in 1974, the girls can expect to outlive the boys by almost eight years, he said. In Texas, as well as the rest of the nation, there are more males born than females but the mortality rate for males is higher at every age level. By age 20 and thereafter the margin by which females outnumber males

increases steadily at each succeeding age level. According to Skrabanek's report, a large share of the state's wealth is controlled by women who have survived their husbands. The margin by which women outnumber men in the voting ages (18 and over) more than doubled in the past decade alone. Females of voting age in Texas outnumbered males of voting age by 304,000 in 1970. As this trend

continues, politicians likely will become more receptive to the concerns voiced by women. Skrabanek says the situation could become more balanced by younger men marrying older women, already a trend in some countries. The husband-younger-than-wife situation has increased 1,000 per cent in recent years in Great Britain. In Sweden it has increased 1,200 per cent. Another country in which the younger-

wife tradition is reversing is West Germany. Considering these data, in a democratic society such as ours, women could conceivably become the dominant sex if only because the majority rules.

## House vetoes Many College Proposals

Most of the budget proposal submitted by the Higher Education Committee of the House of Representatives for state public senior and junior colleges were rejected by the House Appropriations Committee last week.

Representative Bill Prenal, Appropriations Committee chairman, said Thursday the proposal by the Higher Education Committee (HEC) was to be the basis for the two-year Appropriations Bill now under consideration by the House.

"We will use the Legislative Budget Board's (LBB) recommendations as a base, with the exception of special items, major repairs, and upper level institutions," Prenal said.

The committee plans to complete budgets for A&M and the University of Texas by next week. The Education Committee had proposed to reduce funds for UT and A&M by \$30 million, Prenal said.

## Coffeehouse To Present "Morning"

Friday the Basement Coffeehouse is sponsoring a repeat performance by "Morning".

The Basement will open at 8:00 p.m. with "Morning" scheduled to play from 10:00 until closing.

The group consisting of Jimmy Donohue, John Donohue, Billy Donohue, and Jim Issacks have had a fair history of success ranging from a tour of Yugoslavia as back up for a choir to performing in Austin and San Antonio.

Their music is a little bit of everything. If you like country there is their "Oh Them Texas Women" and "Don't You Know I Love You". Also included in their repertoire are easy listening songs and flashy duets.

## bulletin board

- TODAY**  
SAILING CLUB meets at 7:30 p.m. in room 301 Rudder Tower.  
BRYAN COUNCIL OF STUTTERERS meets at 8:30 p.m. at the Brazos Valley Rehabilitation Center, 3300 E. 29th St., Bryan.  
ARAB STUDENTS will elect officers at 7:30 p.m. in room 401 Rudder Tower.
- THURSDAY**  
PETROLEUM ENGINEERING CLUB presents a slide show on Alaska from 7 to 9 p.m. in room 102 Zachry.  
STUDENTS CONCERNED FOR THE HANDICAPPED sponsor Wheelchair Awareness Day with a wheelchair basketball game at 7:30 p.m. in De Ware Field House. The Houston Easy Riders play the Dallas Raiders in the first game and the Aggies will take on the winners.  
MARINE BIOLOGY ASSOCIATION sponsors Cmdr. Bernard Grierson speaking on "Beneath the Sea in a Deep Submersible" in room 107 of the new Biology Building.  
MECHANICAL ENGINEERING SEMINAR features Elmer Lignaul of the Frymire Engineering Company speaking on "Engineering Needs in the Air Conditioning Industry" at 10 a.m. in room 203 Zachry.
- FRIDAY**  
SINGING CADETS perform in the Rudder Theater at 8 p.m. Tickets available in the box office for \$2 (adults), \$1 (students) and 75 cents (children under 12).  
MSC ART AND CRAFT CENTER will hold an Art and Craft Fair from 10 a.m. till 5 p.m. outside the Library.
- SATURDAY**  
MSC ART AND CRAFT CENTER will hold an Art and Craft Fair from 10 a.m. till 5 p.m. outside the Library.  
SAILING CLUB is holding a women's Regatta at Somerville Reservoir. The race determines who will go to the National Women's Regatta.  
A&M WHEELMEN hold a bicycle auction at 1 p.m. in the Grove.  
HORSEMAN'S ASSOCIATION holds the Intercollegiate Horse Show in the Aggie Rodeo Arena.

# Compare the savings at FedMart

### More Meat and Poultry Savings

- Pork Loin, Countrystyle Ribs . . \$1.14 lb.
- Pork Loin Rib Chops \$1.49 lb.
- Fryer Thighs . . . . . 79¢ lb.
- Fryer Drumsticks . . . . . 79¢ lb.
- Ribs Attached Fryer Breasts . . . . . 89¢ lb.
- 1 lb. roll, Owen's Pork Sausage . . . . \$1.19 ea.

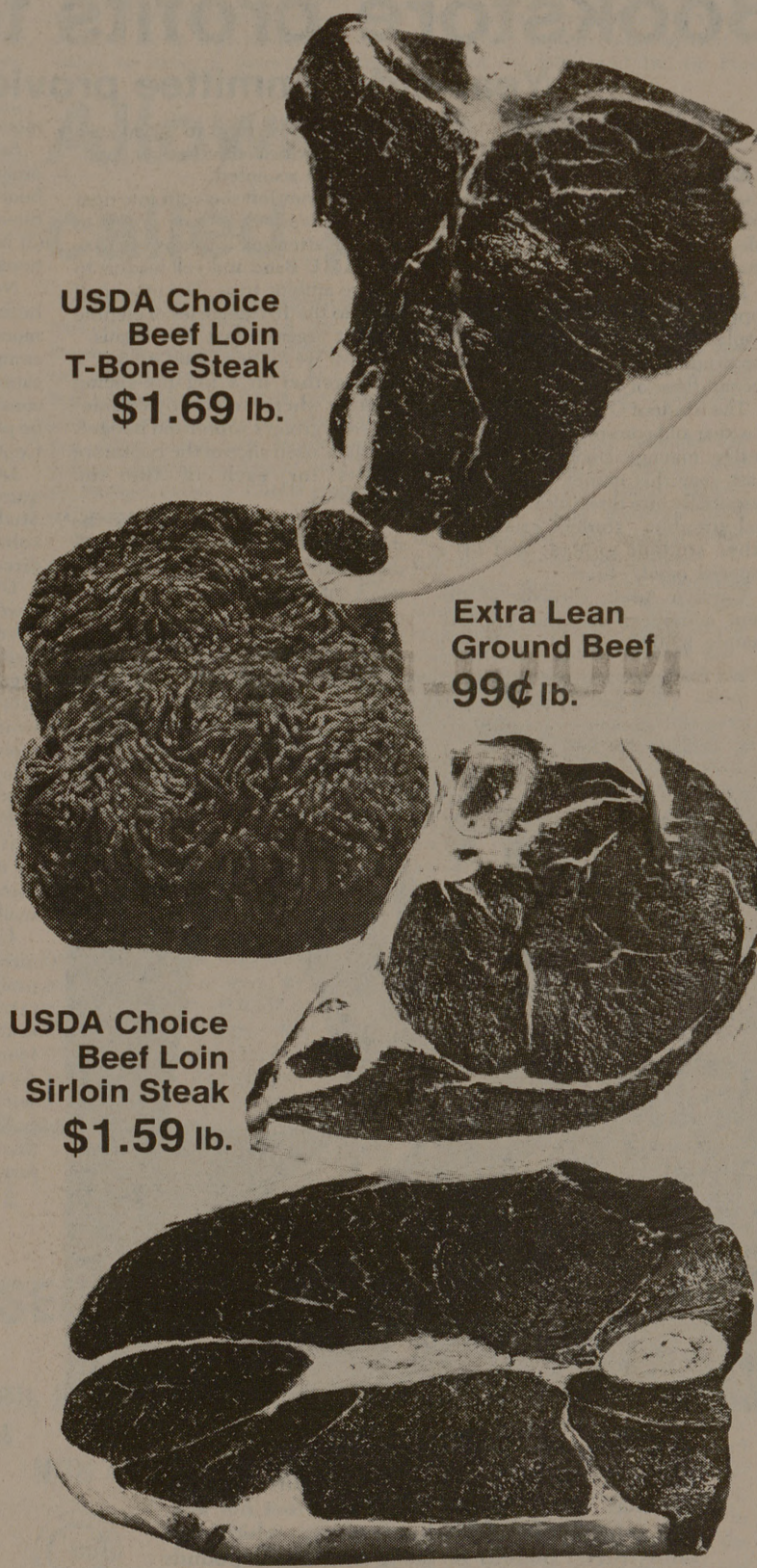
### Frozen, Deli & Dairy Savings

- One Gallon FM Low Fat Milk . . \$1.23
- 12 oz. Processed Sliced FM American Cheese 89¢
- 16 oz. Individually Wrapped FM Cheese Food . \$1.17
- 1 lb. FM Pure Beef Weiners . . 92¢
- 1 lb. package Oscar Mayer Bacon . . \$1.43
- 1 lb. package Oscar Mayer Ham Steaks . . . . . \$2.39
- 24 oz. package Gorton Fish Sticks . . \$1.67
- 1 lb. package Gorton Perch Fillets . . . 97¢
- 29 oz. Package of Two, Colombo Pepperoni Pizzas . . . \$1.79
- 8 oz. Beef, Chicken or Turkey Swanson Pot Pies . . . . 34¢

### Produce Savings

- U.S. #1 Idaho Baking Potatoes . . 15¢ lb.
- Washington Extra Fancy Red and Golden Delicious Apples . . 39¢ lb.
- Large Size California Avocados 29¢ ea.
- 2 lb. cello bag Fresh Carrots . . . . . 39¢
- 5 lb. cello bag Florida Oranges . . . . . 75¢
- Firm Heads Green Cabbage . . . . 13¢ lb
- Florida Corn, Pkg. of 5 . . 69¢

### All beef cuts are USDA choice



USDA Choice Beef Loin T-Bone Steak \$1.69 lb.

Extra Lean Ground Beef 99¢ lb.

USDA Choice Beef Loin Sirloin Steak \$1.59 lb.

USDA Choice Beef Round Steak \$1.39 lb.

- |   |   |
|---|---|
| USDA Choice, Beef Loin Porterhouse Steak . . \$1.69 lb. | USDA Choice, Beef Chuck 7-Bone Roast . . . . . 89¢ lb.  |
| USDA Choice, Beef Rib Eye Steak . . . . \$2.29 lb.      | USDA Choice, Beef Round Rump Roast . . . . . \$1.29 lb. |
| USDA Choice, Beef Chuck 7-Bone Steak . . . . . 89¢ lb.  | USDA Choice, Beef Round Tip Roast . . . . . \$1.39 lb.  |
| USDA Choice, Boneless Beef Round Steak . . \$1.49 lb.   | USDA Choice, Beef for Stew . . . . . \$1.29 lb.         |
| USDA Choice, Beef Round Tip Steak . . . . . \$1.59 lb.  | Sirloin Cut, Pork Loin Roast . . . \$1.09 lb.           |

Prices effective thru Tuesday, April 29, 1975.

Monday thru Friday 9:30 AM to 7 PM / Saturday 9:30 AM To 6 PM Closed Sunday

The Consumer's Friend Since 1954

# FedMart

Family Savings Centers

701 University Drive East (at Tarrow St.), College Station

### Grocery Savings

- 2 lb. pkg. Sugarripe Seedless Raisins . \$1.25
- 32 oz. jar Kraft Mayonnaise . \$1.29
- 27 oz. jar, FM Instant Orange Breakfast Drink . . \$1.49
- 9 oz. Twin Pack, Pringles Potato Chips . . . . . 87¢
- 10 lb. bag, All Purpose FM Flour . . . . . \$1.45
- 12 oz. can Hormel Spam . . . . . 87¢
- 3.3 oz. Sugar Sweetened Lemonade, Orange, Grape, Strawberry, Raspberry, Cherry Kool Aid . . . . . 25¢
- FM Instant Tea, 30oz. \$1.19
- 12 Qt. box FM Non Fat Dry Milk . \$2.37
- 36 oz. can, Instant FM Potato Flakes . . . \$1.29
- 16 oz. can, Blue Lake FM Cut Green Beans . . 29¢
- 10 oz. bottle A-1 Steak Sauce . . . . . 83¢
- 42.5 oz. can, Bi-Pak Beef, Chicken or Shrimp La Choy Chow Mein . \$1.43
- 46 oz. can, Pink Unsweetened FM Grapefruit Juice . . . 43¢

### Household Savings

- Roll of 145 FM Paper Towels . . 42¢
- 20 oz. can FM Bathroom Cleaner . . . . . 67¢
- 20 oz. can Dow Bathroom Cleaner . . . . . 75¢
- 25¢ Off Label 40 oz. bottle, Liquid Ajax Cleaner . . . . . 95¢
- 16 oz. bottle Emerald or Amber FM Beauty Plus Shampoo . . . . . 59¢
- 15 oz. bottle For Normal or Dry Hair Breck Shampoo . . . . \$1.43
- 5 oz. bar, 5¢ Off Label Irish Spring Soap . . . . 27¢

**Tupinamba**  
Eddie Dominguez '66  
Joe Arciniega '74  
Greg Price

For those who demand the Real Thing!

If you want the real thing, not frozen or canned . . . We call it "Mexican Food Supreme."

Dallas location:  
3071 Northwest Hwy.  
352-8570