

Water has development potential

Brazos, Burleson have large quality water supply

AUSTIN—Large amounts of ground water of good quality are available for development in Brazos and Burleson Counties, according to a new Texas Water Development Board publication.

Report 185, "Ground-Water Resources of Brazos and Burleson Counties, Texas," says that about 64,000 acre-feet of water can be produced each year from the counties' four principal aquifers without

depleting the supply.

Written by C. R. Follett of the U.S. Geological Survey (USGS), the report was prepared by the USGS under cooperative agreement with the Texas Water Development Board.

Only 38,000 acre-feet, or 34 million

gallons per day, was withdrawn from underground sources in 1969, the report states. Irrigation accounted for 66 percent of the ground water used, most of this along the flat flood plain bordering the Brazos River. Some 32 percent was used for public supply, and 2

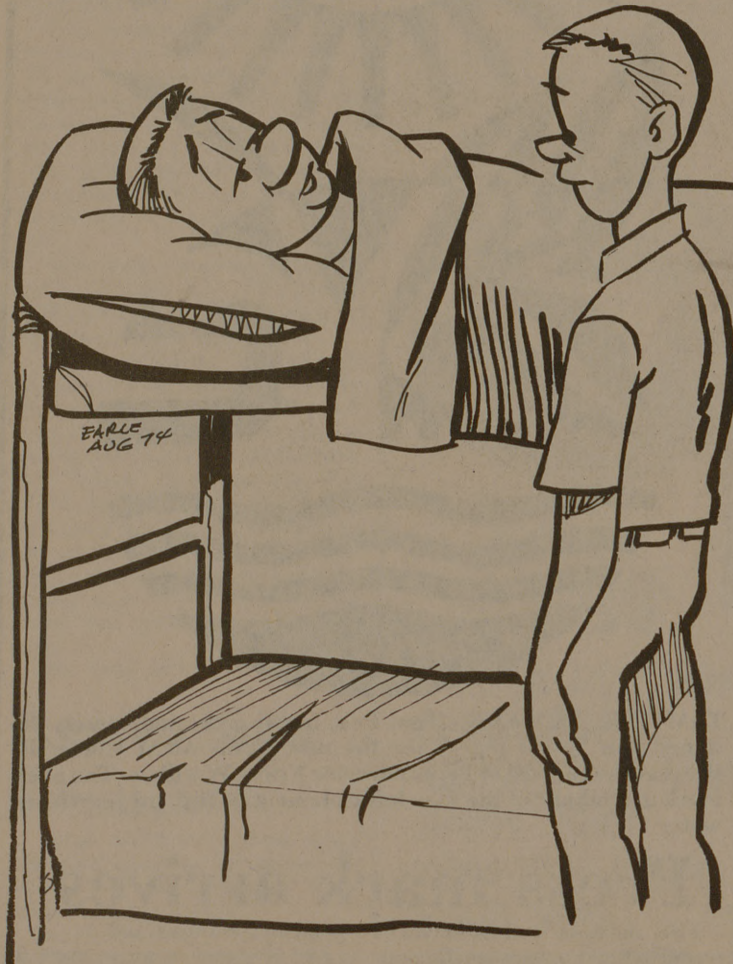
percent furnished rural domestic, livestock, and other needs.

Pumpage from the flood-plain alluvium for irrigation has about reached the limit of available water supply in a 20-square-mile area of Brazos County northwest of Bryan, the report notes, where there is concentrated pumpage from about 150 irrigation wells. Public-supply pumpage by the city of Bryan, Texas A&M University, and Bryan Air Force Base, which closed in 1958, has lowered water levels moderately in the Sparta Sand in some areas.

For the two counties overall, the report finds that pumpage can be increased by about two-thirds, without fear of depletion.

Cadet Slouch

By Jim Earle



"I'm pretty excited about being back myself, but let's let th' plans for this year's bonfire ride for awhile. Okay?"

Convention nears for Texas Demos

AUSTIN, Tex.—Battle lines are drawn for the State Democratic Convention here September 17.

Liberal delegates, although apparently outnumbered, asserted their intentions at a recent meeting in San Antonio to claim their full share of convention plums.

—First, they made clear, they will fight for proportional representation on the State Democratic Executive Committee, the party's policy-making and housekeeping body in Texas.

—Second, they are demanding their share of the 76 delegates to the national Democratic mid-term mini-convention in Kansas City next December.

—The liberals also made preparations for expressing their views on the party platform, resolutions and rules.

—Finally, they indicated they may challenge Gov. Dolph Briscoe's choice for SDEC chairman and other top committee officers. Choices of incumbent governors for these posts traditionally have gone unchallenged where they have majority control of conventions.

The "open party" Democrats at the San Antonio session adopted a platform committing themselves to

a state party organization that will support Democratic candidates and principles at all levels rather than "promoting the policies of incumbent governors."

Bob Bullock of Austin, Democratic nominee for comptroller, is being urged to oppose incumbent SDEC Chairman Calvin Guest of Bryan, Governor Briscoe's choice for a second term.

Meanwhile, the national Democratic charter commission broke up in anger when party regulars and reformers clashed over reform measures in the proposed Democratic constitution.

Texas to host governors

Governors of the southern states, Puerto Rico and the Virgin Islands will meet near here September 8-11 to discuss a wide range of problems, including economy and energy.

Governor Briscoe is host to the Southern Governors Conference which will meet at Lakeway, a luxury resort on Lake Travis 20 miles northwest of the Capital City.

About 300 reporters will join the 19 governors and their staffs for the three-day business meeting, and the social rounds of tennis, golf, sailing and parties.

Gov. Melvin Evans, governor of the Virgin Islands, is chairman of the Southern Governors Conference for 1973-74.

Insurance jargon attacked

The State Board of Insurance is declaring war on "the fine print, double talk and gobbledy-gook" in insurance policies, according to Board Chairman Joe Christie.

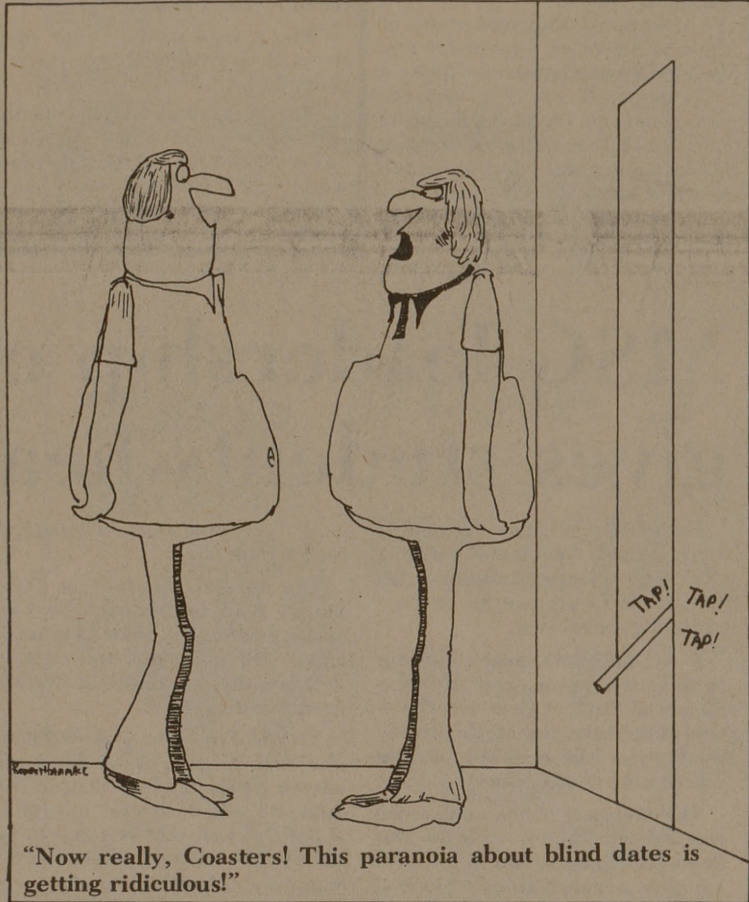
Christie said the average policy holder cannot understand policy jargon, and recent tests show Einstein's theory of relativity is more readable than an average hospital insurance plan.

Christie said efforts will be made in the next session of the legislature to improve "the readability factor" of insurance policies. He recommended that other state agencies give some attention to similar readability problems involving documents over which they have jurisdiction.

No-fault auto insurance will be another subject for legislative consideration in 1975, Christie told Texas Bankers Association at a conference. He said a recent study on the subject by the Lyndon Baines Johnson School of Public Affairs will be of major help to lawmakers.

Coasters

By Rodney Hammack



The Battalion

Opinions expressed in *The Battalion* are those of the editor or of the writer of the article and are not necessarily those of the university administration or the Board of Directors. *The Battalion* is a non-profit, self-supporting enterprise operated by students as a university and community newspaper. Editorial policy is determined by a majority of the editorial board.

LETTERS POLICY

Letters to the editor should not exceed 300 words and are subject to being cut to that length or less if longer. The editorial staff reserves the right to edit such letters and does not guarantee to publish any letter. Each letter must be signed, show the address of the writer and list a telephone number for verification.

Address correspondence to Listen Up, *The Battalion*, Room 217, Services Building, College Station, Texas 77843.

Members of the Student Publications Board are: Jim Lindsey, chairman; Dr. Tom Adair, Dr. R. A. Albanese, Dr. H. E. Hieith, W. C. Harrison, Randy Ross, T. Chet Edwards, and Jan Faber.

Represented nationally by National Educational Advertising Services, Inc., New York City, Chicago and Los Angeles.

MEMBER

The Associated Press, Texas Press Association

The Battalion, a student newspaper at Texas A&M, is published in College Station, Texas, daily except Saturday, Sunday, Monday, and holiday periods, September through May, and once a week during summer school.

Mail subscriptions are \$5.00 per semester; \$9.50 per school year; \$10.50 per full year. All subscriptions subject to 5% sales tax. Advertising rate furnished on request. Address: *The Battalion*, Room 217, Services Building, College Station, Texas 77843.

The Associated Press is entitled exclusively to the use for reproduction of all news dispatches credited to it or not otherwise credited in the paper and local news of spontaneous origin published herein. Right of reproduction of all other matter herein are also reserved. Second-Class postage paid at College Station, Texas.

Editor Greg Moses
Photo Editor Alan Killingsworth
Sports Editor Mike Bruton
Copy Editor Steve Bales
Staff Kathy Young, Gerald Olivier, Andy Pennington, Tim Saito, Robert Liu, David Kimmel, Rodney Hammack.

McLaughlin's

of corpus christi

317 patricia college station, texas

We truly believe that no other men's or ladies' hair stylist in College Station-Bryan is so dedicated to the art of beautiful hair sculpture as McLaughlin's.

We cost a little more. (Artists don't come cheap.) But we are very good.

For proof, we make this offer: Let us cut your hair. Wear it for 10 days and if you're not showered with compliments, we'll happily refund your money.

call 846-5764 for appointment

INDUSTRIAL ELECTRONIC TECHNOLOGY TRAINING

REGISTER NOW
For
FALL SEMESTER
STARTING SEPTEMBER 9, 1974

INSTITUTE OF ELECTRONIC SCIENCE
THE TEXAS A&M UNIVERSITY SYSTEM

For More Information Contact:

Institute of Electronic Science
Texas Engineering Extension Service
The Texas A&M University System
F. E. Drawer K
College Station, Texas 77843
Telephone 713-822-2323

KESAMI SANDWICH SHOPPE

Northgate across from the TAMU Post Office 329 University Drive 846-6428

UNIQUE SANDWICHES and SUBS Hot or Cold

"The food is good and there is a lot of it...a different kind of place to eat."
—as recommended in the gourmet "Gusto" column of THE BATTALION, June 26, 1974

Premium quality delicatessen meats and cheeses on fresh, homemade buns and crisp French rolls complemented with secret, spicy, tangy sauces.

Beer, Sodas, Tea, Coffee, Out-A-Site Salads, Creamy Cheese Cakes with Toppings
Imported HAM - BOLOGNA - SALAMI - SAUSAGE - PASTRAMI - TURKEY - ROAST BEEF - CORNED BEEF.

KESAMI ORIGINALS and SPECIALS
DOUBLES and TRIPLES

the REUBEN the DORIAN the BENJAMIN

PO-BOYS and RICH-BOYS

and featuring our individualistic PIZZA SUB

We also have retail sales from the deli.

KESAMI ORIGINAL SANDWICHES
No Two Sandwiches Alike

Summer Hours: Monday thru Thursday 11 a.m. to 11 p.m.
Friday and Saturday 11 a.m. to Midnight
Sunday Closed

You do have a choice...

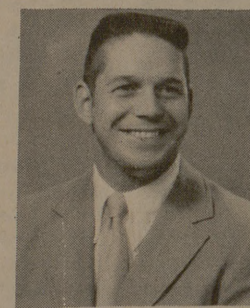
For your Optional Retirement Plan dollars!

For your Tax Sheltered Annuity dollars!

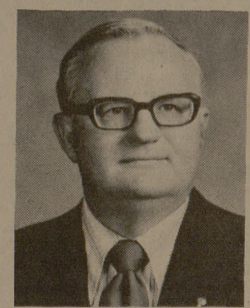
For details without obligation, call:



J.O. ALEXANDER



SAM BYER



JACK GARDNER, CLU

Southwestern Life
Happiness is what we sell
through ANCO/The Anderson Company

MAIN & 25TH STREET / BRYAN-COLLEGE STATION, TEXAS 77801 / PHONE: (713) 823-8061