

Old theory didn't always work

# Local geologist revises shelf theory for locating oil deposits

Dr. Wayne M. Ahr, TAMU geologist, noticed the shelf theory for locating oil deposits doesn't always work. So he has revised it.

Ahr made the carbonate "ramp" environmental model an important alternative to the carbonate shelf model which for years has been used to find oil and gas in limestone rock.

Examples of the shelf model have been found in oil fields from the Cretaceous limestones of Texas and Northern Mexico and the Permian rocks of West Texas-New Mexico. However, Ahr realized the shelf theory didn't explain many oil bearing areas like the Persian Gulf or the Gulf Coast Smackover and Cotton Valley. So he began to look for an alternative to the shelf model for oil bearing environments and some ex-

amples of the alternative which he calls the carbonate ramp.

"The carbonate ramp model is a sloping surface on which the potentially oil bearing limestones were deposited to depths of hundreds of feet while they were subject to open ocean waves and currents from the surf of ancient oceans," Ahr said. "As a result, oil bearing sands will be deposited near the surf zone and the nearby shore. This means a person would explore for these porous, shoreline carbonates to find oil and gas in the ancient buried ramps.

"The ramp characteristics, however, are exactly opposite to the shelf model, which dictates that there are reefs and some oil bearing sands a long distance—maybe tens of miles—from the shore," he said.

"In this case, if one were exploring for oil bearing limestones, he would have to do his drilling at the edge of the shelf, possibly far out to sea while shoreline deposits might be completely overlooked.

"A good example of the carbonate ramp is the Campeche Bank," Ahr said. "This submerged extension of the Yucatan Peninsula along with the Florida Platform make up potentially the major oil bearing envi-

ronments in the Gulf of Mexico. (The Yucatan model is a ramp while the south Florida model is a shelf). "The key problems in exploration for oil and gas in carbonate rocks are locating a reservoir rock and pre-

dicting the extent and direction of the reservoir." The ramp and the shelf are different physiographic models; the difference in geography produces differences in the way the oil bearing layers were deposited.

"Because the ramp and the shelf may have reservoirs that are different in origin, distribution and location the explorationist should be aware of the nature of these models," concluded Ahr.

## Two A&M profs get article award

Two professors in the Department of Economics have won a nation-wide competition, receiving the Best 1973 "Western Economic Journal" Article Award. The article, entitled, "A Test of Consumer Demand Theory Using

Observations of Individual Consumer Purchases," was authored by Assistant Professors Raymond C. Battalio and John H. Kagel of TAMU's Department of Economics, and by Dr. Robin C. Winkler of the University of New South Wales. Correspondents on the article also included Dr. Robert L. Basmann, a professor of economics at TAMU.

In the article, Professors Battalio and Kagel report a test of consumer demand theory in a "token economy." Token economies are planned environments in which individuals live for 24 hours a day for extended periods of time, receiving tokens for work performed and obtaining access to most consumer's goods through the use of token payments.

For some time now, psychologists have used token economies as therapeutic environments for institutionalized populations such as psychiatric patients, pre-juvenile delinquents, school children, etc. Only recently, however, have economists become involved in helping to design more optimal therapeutic environments as well as using these environments for the experimental analysis of economic behavior. Professors Battalio and Kagel are at the forefront of this research.

The award, presented during the Convention of the Western Economic Association, in Las Vegas, Nevada, was granted in part because the authors' contribution represented "a wholly complete scientific experimental approach to testing economic theory."

## Deceased Ag to be honored

On July 3rd at 11:20 a.m. a flag pole will be dedicated to the memory of Danny L. Davis, Doctor of Veterinary Medicine Class of 1970 at the College of Veterinary Medicine.

The small plaque will hold behind it a story of courage and resolve. Dr. Davis was born in Houston in 1945 where he graduated from Waltrip High School in 1963. He attained the distinction of being named "Young Texan of the Month."

Following a summer at South Texas Junior College, Dr. Davis entered Tarleton State College in September, 1963. He completed one year of work before transferring to Texas A&M University in the fall of 1964 for a major in Animal Science. In 1967, he was admitted to the professional curriculum in veterinary medicine to pursue the Doctor of Veterinary Medicine degree, a goal which he had planned and worked toward for many years.

At A&M, Dr. Davis was designated a Distinguished Student for his scholastic achievements.

He was afflicted with Hodgkins disease in the summer of 1969 and underwent repeated radiation and chemotherapy during the fall and spring of the 1969-70 school year. During the spring semester of 1970 he earned a straight B record while waging his fight against a disease which soon was to take his life.

Although confined to a wheelchair, he attended classes and clinic sessions through the last week of his life, continuing his effort to become a Doctor of Veterinary Medicine degree.

In memory of their son, grandson and brother, this memorial flagpole is a gift to the College of Veterinary Medicine from Mr. and Mrs. Joe B. Davis, Jr., Mrs. Ruth Fiorilla and Mr. J. B. Davis, Jr.

## MSC adds ping-pong

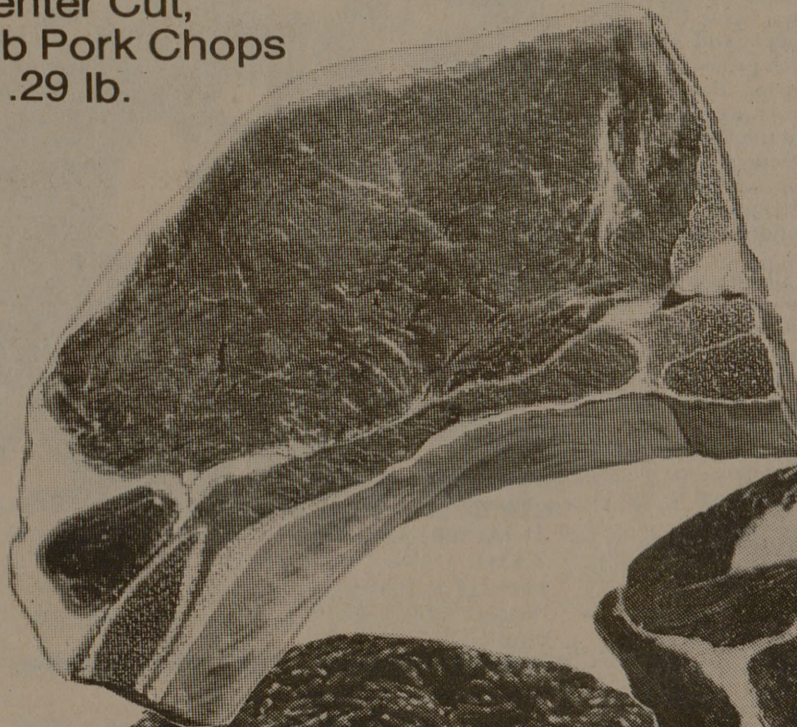
Four ping-pong tables are now available in the Memorial Student Center recreation area.

Manager Joe Polasek said the area is open daily until 10:45 p.m. The rate for table tennis is 38 cents per player per hour. Rubber and sandpaper surfaced paddles are available, or a player may use his own. Bowling lanes were recently resurfaced. Physical education classes use them mornings. Open bowling is from 1:00 to 10:45 p.m. Equipment lockers are to be installed in the near future.

The MSC games room has five billiard and two snooker tables.

# Everyday is like a holiday

Center Cut, Rib Pork Chops \$1.29 lb.



Well almost...when you're a FedMart shopper. For you'll find consistent low prices everyday of the week, everyday of the year. But, consistent low prices mean nothing without consistent high quality. At FedMart, you'll find only USDA Choice beef cuts. So, why not try us. And celebrate something more than the 4th of July.



Center Cut, Beef Chuck Roast 75¢ lb.

Regular Ground Beef 69¢ lb.



Full Cut, Bone In, Beef Round Steak \$1.09 lb.

### Save on USDA Choice Beef Cuts at FedMart

Extra Lean Ground Beef	89¢ lb.	Beef Sirloin Steak	\$1.29 lb.	Quarter Sliced Pork Loin	89¢ lb.
Beef Fillet Rib Steak	\$1.89 lb.	Beef Sirloin Tip Roast	\$1.39 lb.	Owen's 1 lb. Pork Sausage	89¢ lb.
Center Cut, Beef Chuck Steak	75¢ lb.	Boneless, Beef Shoulder Roast	\$1.09 lb.	Fryer Drumsticks	65¢ lb.
Beef Cubed Steak	\$1.69 lb.	Boneless Stewing Beef	\$1.19 lb.	Cut Up Fryers	39¢ lb.

Open Thursday, July 4th from 9:30 AM to 6:00 PM.

We Gladly Accept U.S. Food Stamps

The Consumer's Friend Since 1954

# FedMart

Family Savings Centers

701 University Drive East (at Tarrow St.), College Station

**HOURS**  
Mon. - Fri.—10:30 - 8:00  
Sat.—9:30 - 6:00  
Sun.—Closed

## GREATEST CAFETERIA

COMPLEX IN TEXAS AT SBISA HALL

Two Separate Cafeterias, With Different Taste Tempting Menus Are Open For Your Dining Pleasure.

### PENISTON CAFETERIA

Open — 7 a.m. to 1:30 p.m. Sunday Through Friday

### SBISA CAFETERIA

Open — 6:30 a.m. to 6:30 p.m. Each Weekday

And 7 a.m. to 6:30 p.m. Saturday and Sunday

"QUALITY FIRST"