

Ranked 5th Nationally

Aggie Secondary Trying for no. 1

The Texas Aggies led the Southwest Conference in pass defense last year and they have all their starting secondary people back for the 1974 season.

Safety Jackie Williams summed it up this past spring. "We want to be the best secondary in the nation in 1974. All four of us will be working in College Station this summer and we plan to work out together so we'll be a very close, cohesive group."

The other safety is James Daniels while the two cornerbacks are Tim Gray and Pat Thomas. Gray, 6-1 and 184, and Thomas, 5-9 and 180, both made second-team all-SWC last season and they should be two of the best cornerbacks in the country in 1974. Daniels, 6-2 and 187, and Williams, 5-11 and 176, should be vastly improved safeties.

There's some competition that'll come from back-up people, how-

ever. At the cornerbacks, Charlie Arndt, 5-11 and 175 and William Thompson, 5-10 and 180, both are lettermen while other lettermen safeties include Al Thurmond, 6-0 and 178 and Reggie Williams, 6-3 and 181.

Defensive coordinator Melvin Robertson, who handles the secondary, was pleased with the way the cornerbacks and safeties performed in the spring. "They just took up where they left off last fall. They've played together a full season and know what they're doing. I think they'll have an outstanding season in '74'.

There should be a lot of pressure put on the Aggie secondary this coming season. If the front four and the linebackers play to their capabilities, a lot of the opponents will be forced into passing situations and that's where the secondary will

have to come through.

Gray, Daniels and Thurmond are the only seniors among the secondary players. Thomas, Arndt and Jackie Williams will be juniors while Thompson, Wright and Reggie Williams will be sophomores.



JACKIE WILLIAMS

TIM GRAY

PAT THOMAS

JAMES DANIELS

depth and quality

Aggie Defense, Experience plus

Quality depth is the best thing about the 1974 Aggie Defense.

Any coach who had his whole starting unit returning would be happy. If that defensive unit was no. 1 in the Southwest Conference last season, it would create even more optimism. If you consider that the Texas Aggie defense fits into these categories, you will have discovered why defensive coordinator Melvin Robertson keeps a smile on his face. Beneath the starting unit are 11 athletes who are more than ready for battle.

"This year's defense has more depth than any other I've seen here," Robertson said. He also said that the quality of the depth is what makes the defense a solid cohesive unit.

At the end of spring training the ends were seniors Don Long, 6-3 and 241 and Paul Hulin, 6-1 and 215. Coming on fast were reserves Blake Schwarz, a 6-2 and 219 junior and Tank Marshall, a 6-5 and 237 sophomore. The interior line is anchored by Warren Trahan, 6-4 and 261 and Ted Lamp, 6-2 and 242, both seniors. Just a short distance behind were sophomores Edgar Fields, 6-3 and 238 and Jimmy Dean 6-5 and 252.

The linebacking unit consisted of senior Kenny Stratton (5-11 and 198) in the middle, with Garth Ten Napel (6-2 and 197) and All-American Ed Simonini (6-0 and 205) manning the outside posts. They are hotly pursued by John McCrumby (6-2 and 253) in the middle, with

Lester Hayes (6-2 and 202) and a vastly improved Jesse Hunnicutt, 6-1 and 216 on the outsides.

A nationally ranked secondary returned intact with James Daniels (6-2 and 187) and Jackie Williams (5-11 and 176) at the safeties. Second team All-SWC choices Tim Gray (6-1 and 199) and Pat Thomas (5-9 and 180) are at the corners. Their competition will be coming from safeties Al Thurmond (6-0 and 178) and Reggie Williams (6-3 and 181) and corners Charlie Arndt (5-11 and 175) and Willie Thompson (5-10 and 180).

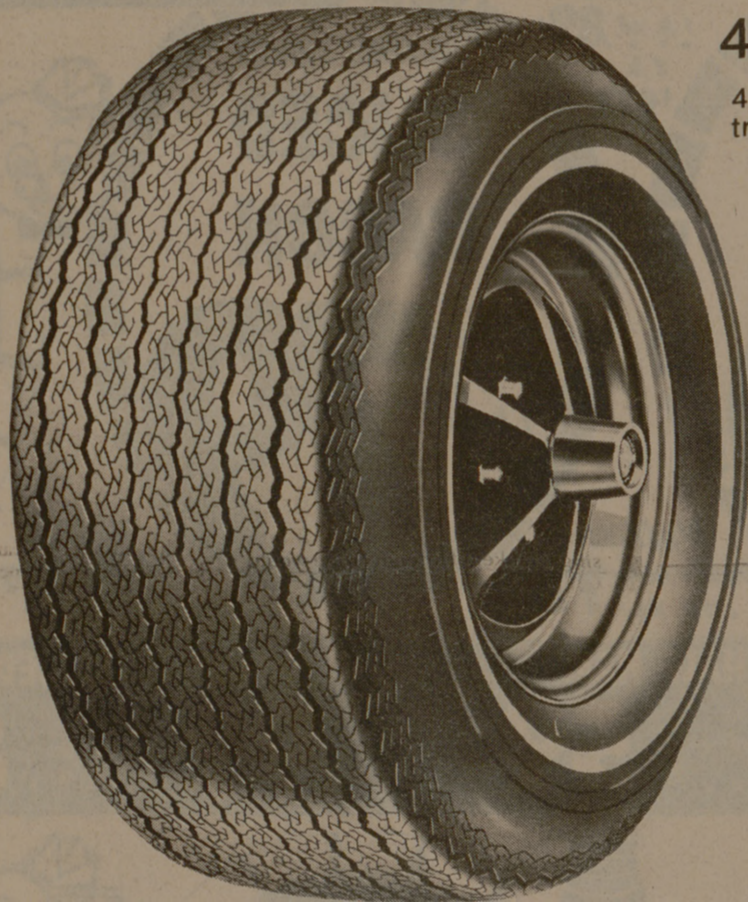
Robertson said that he was going to play a lot of people next season. "We have enough quality people to keep fresh athletes on the field at all times." He also said, "Our defense should be real tough." With offenses growing more and more explosive in the Southwest Conference, it is fortunate that the Aggies can field a defensive unit that can accept the challenge.

Williams to visit Kansas cadets

A&M officials led by President Jack K. Williams will check Army ROTC summer training next week at Fort Riley, Kan.

Accompanying Dr. Williams on the three-day inspection will be Dr. John Koldus, vice president for student services, and Col. Thomas R. Parsons, commandant.

Compare the savings on FedMart tires



4+2 PG 78 Tubeless Whitewall

4 plies of polyester cord and 2 fiberglass belts keep the tread flat and open for more mileage than our 4 ply poly.

C78x13
\$21⁹⁵
plus \$1.99
Fed. Ex. Tax

F78x14
\$24⁹⁵
plus \$2.41
Fed. Ex. Tax

G78x14
\$25⁹⁵
plus \$2.55
Fed. Ex. Tax

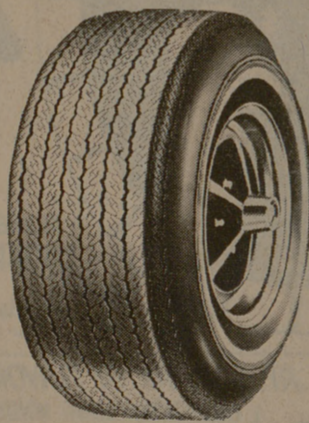
H78x15
\$26⁹⁵
plus \$2.82
Fed. Ex. Tax

SIZE	FEDMART'S PRICE	FED. EX. TAX*
E78x14	\$23.95	\$2.24
H78x14	\$26.95	\$2.77
G78x15	\$25.95	\$2.63
L78x15	\$28.95	\$3.13

*Federal Excise Tax subject to change.

Savings on other FedMart tires

4 Ply Polyester 78 Tires

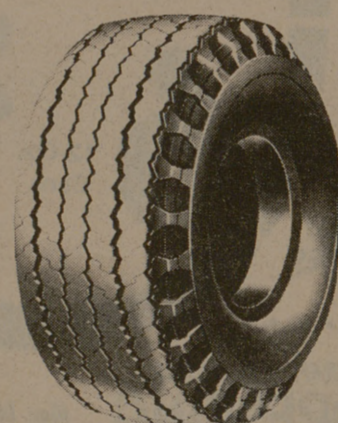


Four strong plies of polyester cord combine strength with resiliency for smooth riding and no flat spotting.

SIZE	TUBELESS WHITEWALL	FED. EX. TAX*
A78x13	\$16.95	\$1.78
B78x13	\$17.95	\$1.83
C78x14	\$18.95	\$2.07
E78x14	\$18.95	\$2.24
F78x14	\$19.95	\$2.41
G78x14	\$20.95	\$2.55
H78x14	\$21.95	\$2.77
G78x15	\$20.95	\$2.63
H78x15	\$21.95	\$2.82
J78x15	\$22.95	\$2.99

*Federal Excise Tax subject to change.

Truck and Camper Tires



Perfect tires for campers, motor homes, and trucks. Rugged and dependable nylon. Tube and tubeless 6 and 8 ply rated tires as indicated.

SIZE	PRICE	FED. EX. TAX*
**700x14 (6 Ply)	\$22.95	\$2.48
**670x15 (6 Ply)	\$23.95	\$2.72
**700x15 (6 Ply)	\$26.95	\$3.13
650x16 (6 Ply)	\$23.95	\$2.52
750x16 (8 Ply)	\$35.95	\$3.60

*Federal Excise Tax subject to change.
**Tubeless

Convenient Credit Terms • No tire trade-in needed • Free tire mounting

FedMart Tire Guarantee

Every tire sold by FedMart, used in automobile passenger service is guaranteed free from defects in workmanship and material and against road hazards and is not limited by time or mileage. All adjustments will be prorated on the basis of the remaining tire tread depth. For example, if your tire requires adjustment with 50% of the original tread depth remaining, you will receive 50% cash refund of the FedMart selling price including all taxes.

Peniston Cafeteria

SWEET SHOP

now featuring

Beautiful, Taste Tempting

CAKES

Made to Order and

Decorated to Suit Your Individual Needs for

BIRTHDAYS WEDDINGS

And Other Special Occasions

Choose a delicious pie or cake from our attractive display and place an order for your next special occasion or call

845-6651

"QUALITY FIRST"

The Consumer's Friend Since 1954

FedMart

Car Service Centers

HOURS
Mon. - Fri. — 10:30 - 8:00
Sat. — 9:30 - 6:00
Sun. — Closed

701 University Drive East (at Tarrow St.), College Station

AVOID THE RUSH! RESERVE YOUR BOOKS NOW

LOUPOT'S BOOKSTORE, North Gate Across From The Post Office