

# 'Clipper' loaded for double role in research

The "Texas Clipper" will be loaded with exotic scientific gear for a variety of experiments during its two-month cruise of the Caribbean and Gulf of Mexico.

While the main job of the Texas Maritime Academy's converted oceanliner is to train cadets in seamanship, it serves a double function as a floating research platform.

Dr. William H. Clayton, oceanographer, meteorologist and provost of TAMU's Galveston-based Moody College of Marine Sciences and Maritime Resources,

chronicled a number of scientific activities that will be carried out during the jaunt which begins Wednesday.

The research includes the tracing of chlorophyll levels. High chlorophyll levels indicate high levels of animal life in the oceans.

Another project is the recording of surface temperatures and employment of a bathythermograph for automatic temperature and depth readings from surface ranging down to 400 meters.

Ocean surface temperatures will

also be measured by infrared techniques using an on-board sensor of high resolution. The device is so sensitive it will record oil in the water and river water in the ocean even in the dark of night. These temperatures are used to verify the accuracy of infrared photographs from satellites.

An on-board sewage treatment plant used in port when the ship serves as a dormitory for TMA cadets during the school year is another project. A researcher is working in an effort to develop bac-

teria for the system that will thrive in seawater.

A final project, to be conducted for the University of Connecticut, uses floating devices with messages in Spanish, English and German that will be let go in numerous places to "figure out what currents are involved in various parts of the Caribbean."

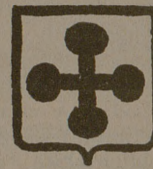
"An added treat will be the chance to study the dynamics and the productivity of an area that produces hurricanes. If the opportunity arises we may be able to inspect

some low pressure cells," said Clayton.

The ship will also be receiving on board the same weather satellite data that helped guide the intrepid Jacques Cousteau through a dangerous stretch of the Antarctic Ocean after his ship had been partially disabled. The visible and imagery data from the satellite transmitted directly to Cousteau enabled the explorer to avoid storms and icebergs while his ship was in a vulnerable situation.

## St. Michael's Academy

An Episcopal Day School



Summer Tutorial Program

Grades 2-6

Mathematics

Reading

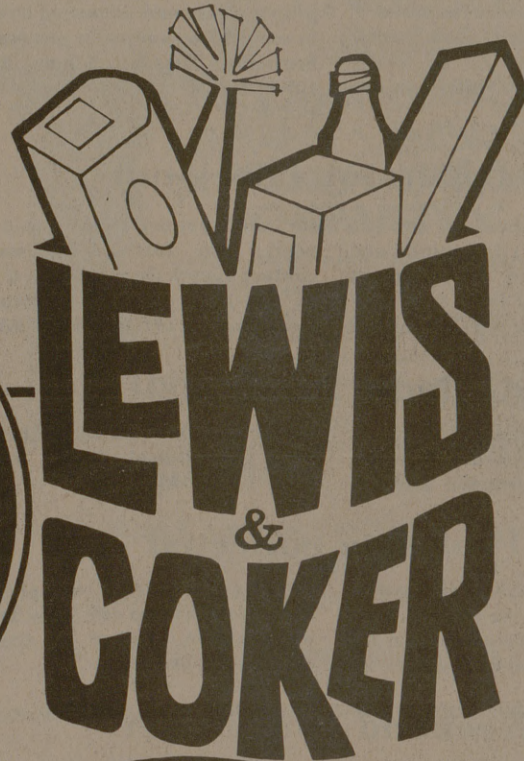
Registration begins June 3  
Classes begin June 10

Call for full information — 822-2715

# OPENING

THE MEAT PEOPLE! FINEST QUALITY BEEF EXPERTLY TODAY...THE DIFFERENCE IS THE WAY WE CARE.

SPECIALS IN THIS AD GOOD THRU TUESDAY, JUNE 11, 1974



U.S.D.A. CHOICE  
**PRIME RIB STEAK**  
GOLD LABEL HEAVY BEEF  
**89¢**  
LB.

**PIKES PEAK ROAST** ..... LB. **1 09**  
**SHOULDER ROAST** ..... LB. **69¢**  
**CUBE STEAK** ..... LB. **1 79**

U.S.D.A. CHOICE  
**SIRLOIN STEAK**  
GOLD LABEL HEAVY BEEF FLAT BONE  
**1 19**  
LB.

**T-BONE STEAK** ..... LB. **1 49**  
**ROUND STEAK** ..... LB. **1 19**  
**RUMP ROAST** ..... LB. **1 09**

U.S.D.A. CHOICE  
**SEVEN STEAK**  
GOLD LABEL HEAVY BEEF  
**79¢**  
LB.

U.S.D.A. CHOICE  
**SHOULDER ROAST**  
SHORT CUT CHUCK  
**69¢**  
LB.

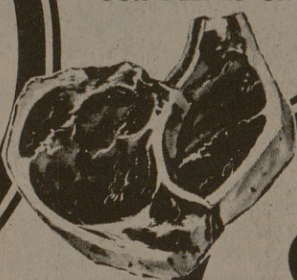
**SIRLOIN STRIP STEAK**  
GOLD LABEL HEAVY BEEF BONE IN  
**1 59**  
LB.

U.S.D.A. CHOICE  
**BONELESS CLUB STEAK**  
GOLD LABEL HEAVY BEEF  
**1 69**  
LB.

U.S.D.A. CHOICE  
**EYE OF ROUND ROAST**  
GOLD LABEL HEAVY BEEF  
**1 69**  
LB.

Our beef is the finest quality U. S. D. A. choice heavy beef available and our butchers are trained in our high standards of cutting and trimming making real value cuts of meat for you. Our clearly marked labels tell what part of the animal the cut is from, like rib or loin and the specific cut such as steak or pot roast, making your selection easier. Fine beef, expertly trimmed, and labeled make U. S. D. A. choice heavy beef from Lewis & Coker your best buy and.....

OUR BEEF IS UNCONDITIONALLY GUARANTEED



**PORK CHOPS**  
FAMILY PAK RIB CUT  
**69¢**  
LB.

HICKORY SMOKED  
**RATH BACON**  
1 LB. PKG. SLICED FIRST LABEL  
**89¢**  
LB.

**RATH LUNCH MEATS**  
RATH 12-OZ. PKG. BOLOGNA SALAMI LUNCHEON  
**79¢**

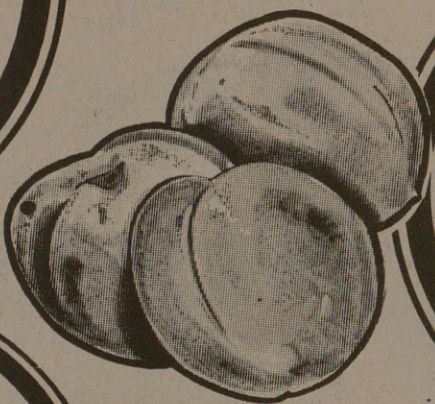
**FAMILY PACK FRYERS**  
ASSORTED PIECES OF CHICKEN  
**39¢**  
LB.

EXTRA LEAN  
**GROUND BEEF**  
**1 19**  
QUALITY & ECONOMY  
LB.

**SMOKED PORK CHOPS**  
CENTER CUT  
LB. **1 09**  
**BONELESS PORK CHOPS**  
CENTER CUT  
LB. **1 39**

**CENTER CUT PORK CHOPS**  
LEAN TRIMMED  
LB. **99¢**

**CALIFORNIA ROMAINE**  
LETTUCE LARGE HEAD  
EA. **25¢**



**CALIFORNIA PEACHES**  
JUICY "NEW CROP"  
**59¢**  
LB.

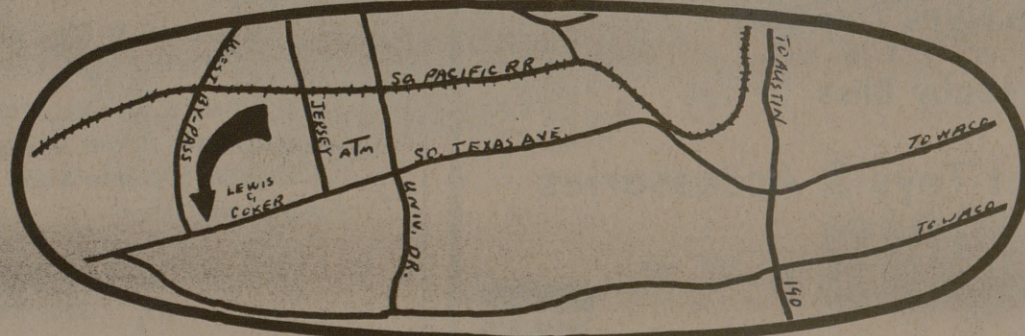
**GROUND BEEF**  
FRESH, LEAN APPROX 3-LB. PKG.  
LB. **79¢**

**BONELESS BRISKET**  
CRY-O-VAC IOWA PACKER STYLE  
LB. **69¢**

**BONELESS EXTRA LEAN BRISKET**  
MARKET TRIMMED  
LB. **95¢**

- LARGE GREEN PERSIAN LIMES ..... LB. 49¢
- FINEST QUALITY CALIFORNIA AVOCADOS EA. 35¢
- CALIFORNIA NEW CROP VALENCIA ORANGES ..... LB. 25¢
- GARDEN FRESH BELL PEPPERS ..... LB. 49¢

- LARGE SIZE CALIFORNIA CELERY ..... STALK 29¢
- U. S. NO. 1 MILD YELLOW ONIONS ..... 3 LB. BAG 49¢
- FRESH CRISP CUCUMBERS ..... LB. 25¢
- NEW CROP CALIFORNIA WHITE POTATOES ..... LB. 27¢



2700 SOUTH TEXAS AVENUE, COLLEGE STATION