

Oceanography takes to flying subs

"Flying" a submarine is not as difficult as it may appear, asserts Michael Cook, an electronics technician with the Department of Oceanography.

Cook is one of four trained crewmen who will operate the new Perry PC-14, a two-man research submersible which will extend the department's oceanographic research capabilities in the Gulf of Mexico and the oceans of the world.

"Once you get the ship steadiated at the desired depth," Cook explained, "you actually fly" the vessel through the water, using elevation and turn controls not unlike those found on airplanes.

The PC-14, which can stay submerged for up to 90 hours with a two-man crew, was delivered to the Moody Campus in Galveston this week, just in time to be installed on the research deck of the R/V Gyre, the newest addition to the oceanographic fleet.

The Gyre and its new passenger were piloted up the Houston Ship Channel Tuesday evening to serve as a floating display in conjunction with the Offshore Technology Conference, which hosted some 25,000

oceanographers and offshore drilling engineers in the Astrohall.

The ship, anchored at the Ship Channel Turning Basin, was visited by numerous conference participants during breaks in program activities.

Cook was trained in operation of the submersible at Perry's submarine construction facility near Riviera Beach, Fla., before certification as a qualified pilot on the craft.

He and the other pilot, Kenneth Bottom, a research assistant in the Oceanography Department, spent 19 hours in manned dives with the

craft, learning which levers to pull to make the ship operational.

The five-ton craft can carry a payload of 900 pounds, and has a tested depth capability to 1,200 feet. Although the cruising speed of three knots may not seem fast, Cook feels it will be adequate to enable scientists on board to complete their studies in a most effective manner.

"The pilot sits on a shelf behind the scientist doing research," Cook noted. "In surface operation, he elevates himself to be able to see out the seven eight-inch viewports in the conning tower. Once submerged, he follows the directions of the re-

searcher, who sits in front of a 36-inch hemispherical viewpoint in the nose of the craft."

Dr. Thomas J. Bright, professor of oceanography, will be in charge of the submersible program. His plans call for initial scientific activities to include an investigation of natural oil seeps in the Northwestern Gulf of Mexico.

The submersible was obtained at a cost of about \$160,000. Cook observed that most submersibles on the market may run as high as \$2 million.

"This vessel was made available to TAMU at a very reasonable cost," Cook stressed. "In return, we will provide the company with operations reports. If the ship operates as it is expected to, the company will place them on the market at a cost that many more institutions can afford."

West Germany staggered by spy scandal

BONN, Germany (AP)—Chancellor-designate Helmut Schmidt started forming a new cabinet Thursday burdened with the spy scandal legacy left by Willy Brandt's resignation.

Meeting in executive session, Brandt and other Social Democratic party leaders unanimously approved Schmidt's candidacy for chancellor, empowering him to start negotiations on a new government with their coalition partners, the Free Democrats.

The Free Democrats, led by caretaker Chancellor Walter Scheel, also backed Schmidt's candidacy for the approval vote May 16 in the coalition-ruled parliament.

The 55-year-old Schmidt, his party's strong man finance minister, hopes to rally the coalition still stunned by Brandt's sudden resignation as chancellor Monday night. Brandt quit in the political furor caused by the unmasking of an East German spy who worked as Brandt's political adviser.

HORNY BULLS ARE NOT FUNNY, BUT IF ONE EVER TELLS YOU A JOKE, YOU'D BETTER LAUGH.



The Montezuma Horny Bull.TM
1 oz. Montezuma Tequila.
5 oz. CONCENTRATED ORANGE BREAKFAST DRINK. Over ice.
It's sensational, and that's no bull.

©1974. 80 Proof Tequila. Barton Distillers Import Co., New York, New York.

Tupinamba

Eddie Dominguez '66
Joe Arciniega '74



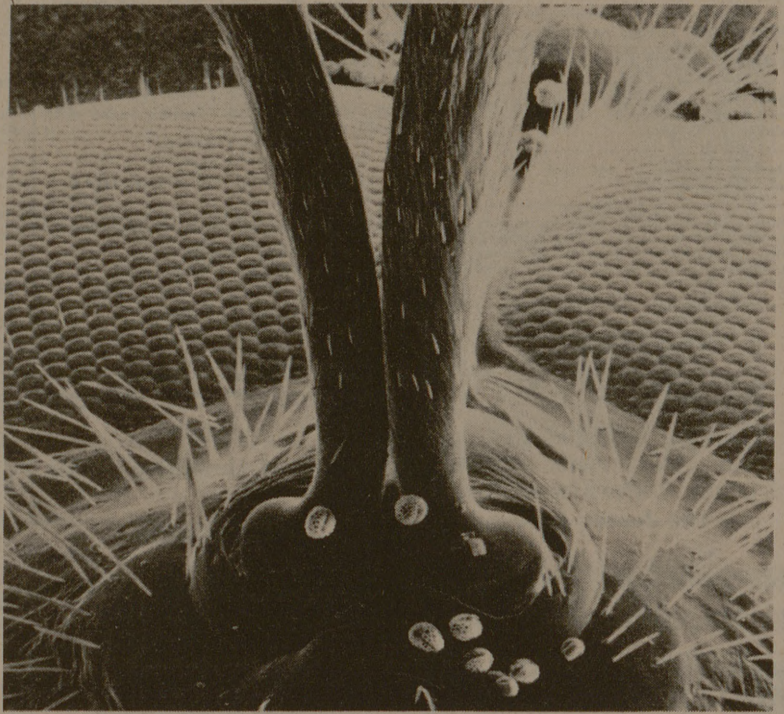
POP CHOSE WHO demand the Real Thing!

If you want the real thing, not frozen or canned... We call it "Mexican Food Supreme."

Two Dallas locations:
3071 Northwest Hwy.
352-8570
2131 Ft. Worth Ave.
646-0645

bulletin board

TONIGHT
SCUBA CLUB will have a party at Ken Perkin's house, 912 Montclair. Admission is \$1.50 per person payable to Donna Cox by Thursday. For more information call 846-7032 or 825-5452.
BRYAN UNITED PENTECOSTAL CHURCH will meet in All Faiths Chapel at 7:30 p.m.
SATURDAY
BENGALI STUDENTS AND FACULTY will celebrate the 113th birthday of Rabindronath Tagore at 7:30 p.m. in Room 401 of the MSC.
PANHANDLE HOMETOWN CLUB will have a party in the Casa del Sol party room at 8 p.m. There will be a charge of \$1.50 per person.
TUESDAY
TAMU WHEELMEN will meet in Room 228 of the MSC at 7:30 p.m. for the last meeting and slide show.



With the aid of an electron microscope this is the way that TAMU scientists see insects carrying pollen. The mattress looking areas are two compound eyes of an insect. The particles that look like sponges are pollen clinging to the base of the insect's antennae. Insects and flowering plants have evolved together and many of the plants have developed mechanisms which enables visiting insects to pick up pollen as it takes the nectar. (Photo by Nick Norton)

Campus Briefs

Traffic tower

A new air traffic control tower at Easterwood Airport has been commissioned for installation this year.

Announcement of the facility was made by the U. S. Department of Transportation through Congressman Olin E. Teague.

The Easterwood tower was originally planned for fiscal year 1975. It

Housing manager

Glenn H. Jennings, formerly of Stephen F. Austin State University, will become the new housing manager Monday, announced Dean of Men, Charles W. Powell.

Jennings was assistant director of housing at Stephen F. Austin for more than four years and also served as manager of the Nacogdoches Branch of the East Texas Teachers Credit Union.

He replaces Allan M. Madeley, who will join the Faculty Mail Service in preparation for assuming the

is a Federal Aviation Administration budget item.

Bobby Clay, FAA local coordinator, said the tower was scheduled for another airfield. A 40 to 50-foot tall prefabricated structure built by Avco, it will be erected at the TAMU field under the Department of Transportation commission change.

Jennings, who was born in Oklahoma but has resided in Texas most of his life, graduated from Stephen F. Austin with a B.S. in accounting in 1968. He received his M.Ed. in counseling from the same institution in 1973.

The new housing manager has been active in Nacogdoches chapters of the Lions Club and Jaycees. He is also chairman of the Nacogdoches County Heart Fund campaign for 1974.

Engineering grads

Four graduating engineering students were honored Wednesday as recipients of this year's Engineering Faculty Achievement Awards.

The awards, presented by Dr. W. D. Von Gonten, chairman of the awards committee, went to Patrick Lawrence Coyle, mechanical engineering; George Roland Love, electrical engineering; Stephen Lynn Weaver, engineering technology; and John Edward Bethancourt, petroleum engineering.

The students were chosen by a faculty committee on the basis of scholastic honors, honor societies, campus activities, summer work, and other criteria, Dr. Von Gonten noted.

The recipients were presented framed certificates indicating the award, and their names will be cast in bronze to be added to the awards board in the commons area in the Zachry Engineering Center.

SILVER DOLLAR Saloon
EVERYDAY SPECIALS
\$1.00 PITCHER BEER
.55 MIXED DRINKS
FRIDAY & SATURDAY
2 - 7:30
LIVE HIGH COTTON
8-12
807 Texas Ave.
Across From A&M

PALACE TODAY
6 p.m. - 7:45 - 9:35
2 p.m. - 3:45 - 5:35 - 7:25 - 9:20

**GREGORY PECK
DESI ARNAZ, JR.**

"BILLY TWO HATS"

PG-13
United Artists

CAMPUS TONITE
5:45 - 7:35 - 9:30

SPECIAL AGGIE FROLIC SAT. NITE
Sneak Prevue — Sun. 7:30 p.m.

Those "TRINITY Boys"
take to the air and
still fly off the
handle.

Joseph E. Levine and Avco Embassy present
An Italo Zingarelli Film
"All The Way Boys"
Prints by Deluxe COLOR An Avco Embassy Release

QUEEN TONITE—7:30 - 9:20
Pam Greer In
"FOXY BROWN" (R)

CIRCLE DRIVE-IN
TONITE AT 8:30
"LAST SUMMER" (R)
At 10:15 p. m.
"M.A.S.H."

Skyway Twin
DRIVE-IN 2000 E. 29TH
PH. 823-3100
WEST SCREEN AT 8:30 P. M.
"CINDERELLA LIBERTY"
At 10:30 p. m.
"WELCOME HOME SOLDIER BOY"
(Both "R")
EAST SCREEN AT 8:30-10:30 p.m.
Robert Redford In
"JEREMIAH JOHNSON"

For Mother's Day, May 12th.

Blue Bonnet Jewelry by Paula
Hand Painted,
Signed
Originals...

Unique pendants,
bracelets, lockets,
necklaces, pins, earrings,
tie tacks, cuff-links and
framed miniatures each featuring
a single stem bluebonnet hand painted
and fired on fine china.

Available only at
The Blue Bonnet Patch
816 Villa Maria Rd.
Bryan, Texas 77801 (713) 823-5211
10:00-5:30 Mon.-Sat.

DECKS & SPEAKERS
SAVE ON STEREO - 4 CHANNEL - CHANGERS
Daily 2-6
Saturday 11-5
Next To Triangle Bowl

SOUND CENTER
NOW AT
CLEARANCE SALE
HI FI INVENTORY

Peniston Cafeteria

NOW BETTER THAN EVER BEFORE. YOU WILL BE PLEASED WITH THESE CAREFULLY PREPARED AND TASTE TEMPTING FOODS. EACH DAILY SPECIAL ONLY \$1.29 PLUS TAX.

MONDAY EVENING SPECIAL BROILED BACON WRAPPED MOCK FILET STEAK GERMAN STYLE POTATOES Choice of one vegetable Rolls & Butter Tea or Coffee	TUESDAY EVENING SPECIAL BREADED FISH FILET w/TARTAR SAUCE Cole Slaw Hush Puppies Choice of one vegetable Rolls & Butter Tea or Coffee	WEDNESDAY EVENING SPECIAL CHICKEN FRIED BEEF STEAK w/CREAM GRAVY Choice of two vegetables Rolls & Butter Tea or Coffee
---	---	--

THURSDAY EVENING SPECIAL
ITALIAN CANDLELIGHT DINNER — ITALIAN SPAGHETTI
SERVED WITH SPICED MEAT BALLS AND SAUCE
Parmesan Cheese - Tossed Green Salad
Choice of Salad Dressing - Hot Garlic Bread
Tea or Coffee
You cannot believe you get, "The Whole Thing," for \$1.29

FRIDAY EVENING SPECIAL
MEXICAN FIESTA DINNER
TWO CHEESE AND ONION ENCHILADAS w/CHILI
Spanish Rice
Patio Style Beans
Rolls & Butter
Tea or Coffee

SUNDAY SPECIAL NOON and EVENING
ROAST TURKEY DINNER
Served with Cranberry Sauce & Crabapple
Cornbread Dressing
Rolls - Butter - Coffee or Tea
Giblet Gravy
And your choice of any One vegetable

Your BANKAMERICARD welcome here

"QUALITY FIRST"