

State Rep Drops Environment Bill; Blames Apathy

AUSTIN (AP)—Blaming public apathy and calling certain lobbyists "vultures," Rep. Carl Parker, D-Port Arthur, pulled down his environmental quality bill Tuesday after losing two key House votes.

"I see the vultures in the gallery are waiting to pick the bones," Parker said after the House added amendments exempting two major areas of activity from state surveillance.

"I don't blame them. They've done their work and represented their clients well. I blame the people who are not interested in the environment, the folks who have not taken the trouble to express their concern. . . . If the

people of Texas want to differ with what we've done, they can voice their objections before the end of the session."

Parker's bill was laid on the table subject to call, at his request.

The measure would have established a new Texas Office of Environmental Quality, directed by the governor. All state and local governments would be required to report on the potential environmental impact of their actions. The proposed environmental quality office would have the power to go to court against other state and local agencies to halt activities that might harm the environment.

Over Parker's objection, the House adopted an amendment by Rep. DeWitt Hale, D-Corpus Christi, exempting issuance of permits, variances or licenses from the office's surveillance.

Variances and permits are now granted by state agencies to enable industries and cities to continue polluting the air and water—under state supervision—while they ostensibly seek ways to clean up their operations.

Parker moved to pull his bill down—subject to a possible future majority vote to recall it—after the House added an amendment by Rep. Ray Hutchison, R-Dallas.

Hutchison's amendment would

remove any environmental protection requirements for projects funded 10 per cent or more by bond issues.

Airport construction was the main type of project mentioned by Hutchison.

"Nobody in New York is going to be idiotic enough to loan one dime if a state agency could come in after two years and stop the project," Hutchison said.

Parker said environmental impact statements would be required before construction began.

"Bond attorneys know what is required and would know when an environmental impact statement is required. . . . If you take

this out, there won't be much left at all," he said.

Parker's motion to table the amendment failed, 59-90, and the Hutchison amendment was added on a voice vote.

It was the second time this session that a major environmental bill was pulled down after a Hutchison amendment was added. Rep. Hawkins Menefee, D-Houston, withdrew his bill permitting citizens' suits to halt pollution after Hutchison attached an amendment blocking attacks on the validity of standards, permits and variances issued by the Texas Water Quality Board and Texas Air Control Board.

Cap And Gown Elects Officers

Cap and Gown, senior women's honor society, elected officers for the 1973-74 academic year at the April 26 meeting.

Kendra Williams was elected president; Cynthia Berry, vice president; Linda Reinke, treasurer; Lee Grieser, secretary; and Jean Collins, historian-reporter.

The new members also discussed project plans for the upcoming year. These plans include a service project at the University Hospital to help them update their files.

Also in the future is a "big-sister" program to offer friendship and assistance to incoming freshmen and transfer women.

The Cap and Gown women expressed as one of their primary concerns the recognition of women as intellectuals on the A&M campus.

The last meeting of this semester for Cap and Gown will be a hamburger supper May 6.

COLORADO HELPED CURIE
DENVER (AP)— Uranium mining began in Colorado during World War I when radioactive samples were taken from Uranium on the Western Slope to Paris for Madame Curie's famous experiments.

SKAGGS ALBERTSONS DRUGS & FOODS



FILL YOUR FREEZER SALE!

CHUCK ROAST
U.S.D.A. CHOICE BEEF
BLADE CUT
LB. **78¢**

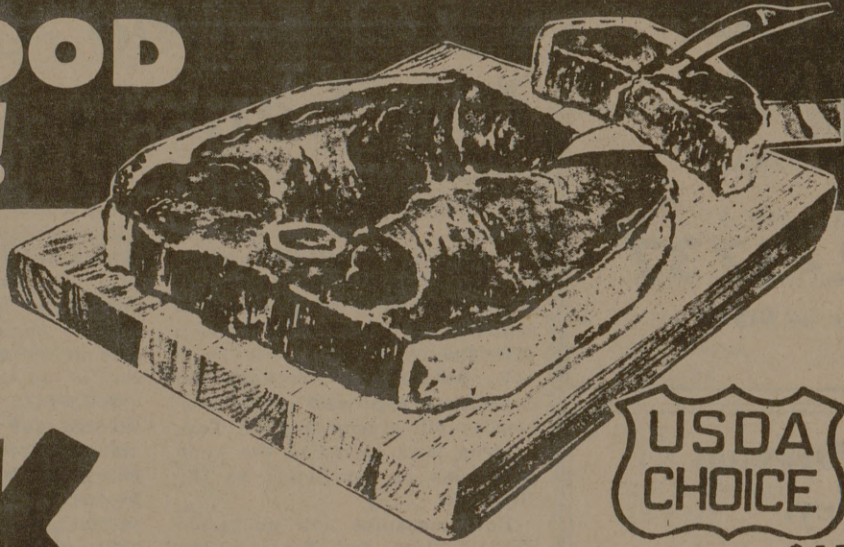
FROZEN FOOD SALE!!

SPECIALS GOOD WED., THURS., FRI., SAT., MAY 2, 3, 4, 5, 1973

ROUND STEAK

138¢

U.S.D.A. CHOICE BEEF
FULL CUT
LB.



BONELESS ROUND STEAK	U.S.D.A. CHOICE BEEF FULL CUT	LB.	\$1.58
TOP ROUND STEAK	BONELESS U.S.D.A. CHOICE BEEF	LB.	\$1.68
SWISS STEAK	U.S.D.A. CHOICE BEEF	LB.	\$1.18
RUMP ROAST	U.S.D.A. CHOICE BEEF	LB.	\$1.18
BONELESS BARON OF BEEF	U.S.D.A. CHOICE BEEF	LB.	\$1.58
SIRLOIN STEAK	U.S.D.A. CHOICE BEEF	LB.	\$1.48
T-BONE STEAK	U.S.D.A. CHOICE BEEF	LB.	\$1.68
SLICED CHEESE	SKAGGS-ALBERTSON'S INDIVIDUAL WRAPPED SLICES	12 OZ. PKG.	78¢
RED SNAPPER FILLETS	FLOWN INTO ASSURE FRESHNESS	12 OZ. PKG.	\$1.39
LITTLE SIZZLERS	HORMEL'S PORK SAUSAGE LINKS	12 OZ. PKG.	79¢

BANQUET DINNERS

ALL VARIETIES EXCEPT BEEF OR HAM

11 OZ. PKG.

\$1

BANQUET FRUIT PIES

APPLE CHERRY OR PEACH

20 OZ. PKG.

24¢

BANQUET COOKING BAGS

5 ITEMS TO CHOOSE FROM

5 OZ. PKG.

\$1

CHINESE DINNERS

CHUNG KING CHICKEN, BEEF, OR SHRIMP

10 OZ. PKG.

55¢

BANQUET POT PIES

BEEF, CHICKEN, OR TURKEY

8 OZ. PKG.

15¢

DELICATESSEN-SNACK BAR

BAKED HAM "GOOD & LEAN" LB. **\$1.99**

SWISS CHEESE "REAL MILD" LB. **\$1.65**

ALL MEAT BOLOGNA "ECKRICH SLICED TO ORDER" LB. **\$1.19**

HOT LINKS "SPICY" 5 FOR **\$1.00**

JANET LEE ORANGE JUICE

6 OZ. CAN

15¢

POTATOES ALBERTSON'S HASH BROWNS 2 LB. PKG. **28¢**

GREEN BEANS WEST PAC CUT OR FRENCH SLICED 4 OZ. PKG. **\$1.00**

CORN WEST PAC CUT 10 OZ. PKG. **\$1.00**

COFFEE RICH SAMPLE PKG. 8 OZ. **10¢**

FRESH PRODUCE SPECIALS

CALIFORNIA AVOCADOS

FRESH AS SPRING!

LARGE SIZE

4 FOR **\$1.00**

POTATOES COLORADO RUSSET U.S. NO. 1 5 LB. CELLO BAG **69¢**

ONIONS CALIFORNIA GREEN YOUNG AND TENDER 2 BUNCHES **27¢**

RADISHES CHERRY RED 2 6 OZ. CELLO BAG **27¢**

TOMATOES VINE RIPE SALAD TYPE 2 QT. PACK SIZE **68¢**

MUSHROOMS BROIL IN BUTTER LARGE SIZE **99¢**

FROZEN FOOD

WEST-PAC BROCCOLI CHOPPED 4 8 OZ. PKG. **\$1**

WEST-PAC OKRA 3 CUT 10 OZ. PKG. **\$1**

JANET LEE WHIP TOPPING 9 OZ. PKG. **38¢**

CARROT CAKES

BAKERY

ASSORTED CUP CAKES 16 ICED **\$1.00**

PLAIN OR SEEDED HARD ROLLS 30 FOR **\$1.00**

APPLE SAUCE CAKE DONUTS 20 FOR **\$1.00**

EGG SESAME SESAME BREAD 16 OZ. LOAVES **29¢ EA.**

BANANA CREAM CREAM PIES **89¢ EA.**

SKAGGS ALBERTSONS DRUGS & FOODS

UNIVERSITY DR. AT COLLEGE AVE.

WALT DISNEY PRODUCTIONS

STARTS TODAY

2 p. m. - 3:55 - 5:50 - 7:45 - 9:40

HE'S A WINNER... HE'S A SWINGER... HE'S DYNAMITE!

WALT DISNEY PRODUCTIONS

the World's GREATEST ATHLETE

TECHNICOLOR

CAMPUS

TODAY—5 p. m. - 7:30 - 10:00 P.M.

ROBERT SHAW as Lord Randolph Churchill

ANNE BANCROFT as Lady Jennie

SIMON WARD

YOUNG WINSTON

Skyway Twin

DRIVE-IN 2000 E. 29TH PH. 832-3300

WEST SCREEN AT 8:05 P. M.
Steve McQueen In "GETAWAY" (PG)

At 10:10 p. m.
Paul Newman In "POCKET MONEY" (PG)

EAST SCREEN AT 8:15 P. M.
"STEEL YARD BLUES" (R)

At 9:50 p. m.
"MACABE & MRS. MILLER"

WE'RE FIGHTING HIGH MEAT PRICES