

# Vice President, Treasurer Candidates Unveil Plans

## Mark Fitte

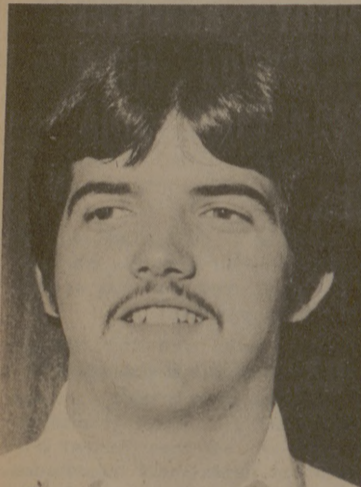
**What is your platform?**  
 "I will work to hire a full-time student lawyer and create a full-time staff psychologist's position, both of which are desperately needed here."

"I will work to totally re-vent the judicial branch of Student Government to bring all judicial procedures under a central cohesive unit. I would like to publish procedures so that all students may become aware of the appeals and options available on any judiciary matter."

"I will continue working in the Texas Student Lobby and the Texas Intercollegiate Student Association to insure that A&M students are fairly represented by those organizations in Austin."

"The Senate must maintain open communications with the student body so it can represent all students before the administration and board of directors."

**What are your qualifications?**  
 "I have worked with the Senate for three years, been an executive aide for TISA and a member of the University Disciplinary Appeals Panel. I am a past member of the Senate Judicial and Legislative Review Committees as



Mark Fitte

well as active in class council programming for two years."

**Should the size of the Senate be reduced?**

"I don't feel the size should be cut because a reduction would mean a loss in communication between senators and constituency."

**What are your feelings on the**

## Hospital and Services Fees?

"I want the hospital fee separated from the Student Services Fee because the hospital fee would gradually cut into the monies to be used for other important student programs. I do think the services fee should be kept low as is possible, but at the same time provide as much support as is feasible to programs."

**How would you run the Student Senate?**

"I will run it in such a way as to keep order, expedite the processing of legislative matter and end midnight meetings which are unnecessary and tiring."

"I would use my leadership training and ability to direct the executive committee and mold it into a strong, cohesive team to work for students."

\*\*\*

## Phillip Smith

**What is your platform?**

"I feel the Student Government should sponsor more issues which directly affect the students and make getting an education easier. I see no reason why we shouldn't convert the Exchange Store to a cooperative basis, thus lowering the cost of books and supplies to all students by offering discounted rates."

"We need to seriously examine the process of pre-registration. The current method of assignment of class schedules via computer random selection is wholly unsatisfactory. Each student should have the freedom to enroll, space permitting, in the course he wants, with the professor he wants, at the time he wants to take it."

"A&M also needs a course and teacher evaluation service published by the Student Government, giving pertinent information on professors, courses and books being used."

**What are your qualifications?**

"I served as Steering Committee chairman for SCONA XVII and vice-chairman for SCONA XVIII. I am a distinguished student and have worked with the Senate on the Day Care Center Committee."

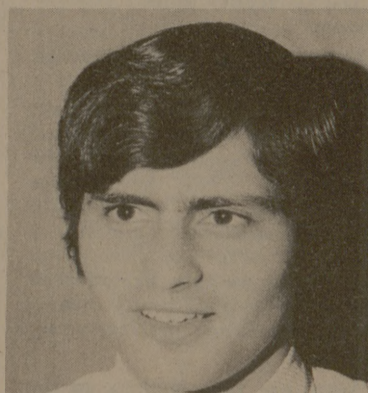
**Should the size of the Student Senate be reduced?**

"To reduce the size at a time when so many students are concerned with the lack of communi-

cation displayed by the Senate would be disastrous. It would result in less student input."

**What are your feelings on the Hospital and Services Fees?**

"The Senate needs to take a close look at where it is spending our money, being certain that the students who are bearing the costs are the ones who are receiving the benefits. We need to eliminate some of the mandatory fees on



Phillip Smith

campus and place them on an optional basis, especially laundry service."

"We should look into the feasibility of a user's fee for the hospital fee. This would put the cost burden on those who use the service and a lighter burden on those who don't."

**How would you run the Student Senate?**

Legislation is becoming increasingly difficult to pass while committees bog down in their work. I would expedite proceedings and debate on the Senate floor, force committees to move more quickly on assigned work, require senators to be more informed on the issues and shorten the length of present meetings."

\*\*\*

## Randy Stephens

**What is your platform?**

"I will work towards a less mandatory subsidization and more optional fees. I would like to see increased use of the referendum in the future."

"The student attorney idea has my strongest backing. I would support improved intramural facilities, although this building is already planned by the administration and need it needs Senate action."

**What are your qualifications?**

"I have worked with the Student Services Committee and have done actual work to obtain an FM radio station for the university. I have been president of various clubs in the past and have experience in handling large bodies of people."

**Should the size of the Student Senate be reduced?**

"It should be reduced by cutting, but not eliminating, college representation."

**What are your feelings on the Hospital and Services Fees?**

"I opposed the separation of the hospital fee because there will now be a strong temptation to raise fees. Fees have always been

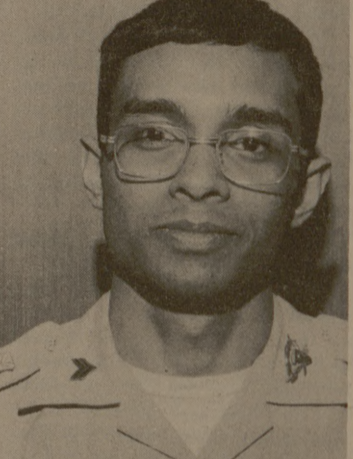
the Senate so students may take an active part in the deliberations of the Senate and Student Government."

5. An open-air, campus radio station.

6. A University "CO-OP" providing discounts to students on stereo equipment, clothes, etc."

**What are your qualifications?**

"I have been President Pro-



Shariq Yosufzai

tem in the Senate from the College of Engineering, served on the Reapportionment, Senate Academic Affairs and Police Relations Committees; University Academic Appeals Panel, International Admissions Advisory Committee; delegate to SCONA for three years; Chairman, A&M Scholastic Service; a Welch scholar; and a distinguished student."

**Should the size of the Student Senate be reduced?**

"No. A reduction would cause a further widening of the communications gap between senators and constituents. The 100-man Senate needs more time before a subjective judgement about its working can be made."

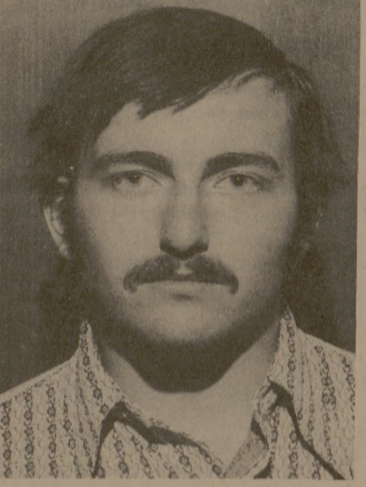
**What are your feelings on the Hospital and Services Fees?**

"A \$15 hospital fee can only be justified if it includes the services of a psychiatrist, gynecologist, dentist and top-quality health facilities and personnel. If all these services are provided the hospital fee can be the catalyst for an ideal University health care program."

"The Student Services Fee should be more service-oriented. Some of the money given to the Athletic Department could be spent for events like Town Hall, Political Forum, etc."

**How would you run the Student Senate?**

"I will run it as in a democratic manner and see that all the pro's and con's of an issue are considered and that no favoritism is made in calling on people to speak. I will use all tools of parliamentary procedure to prevent any sort of "railroading" of issues through the Senate."



Randy Stephens

set at the maximum in the past, never less than maximum."

**How would you run the Student Senate?**

"I will encourage discussion, treat all groups fairly and prevent the Senate from bogging down in petty parliamentary traps."

\*\*\*

## Shariq Yosufzai

**What is your platform?**

"I would like to see:  
 1. A "University Senate" on which both students and members of the Board of Directors are represented. This will open up regular channels of communications between the students and board members.  
 2. An improved and optional laundry service.  
 3. Adequate facilities for all intramural sports such as handball, softball, etc., by supporting the construction of an Intramural Complex.  
 4. Generate student interest in

### Cates Typewriters Co.

Owned By

## MIKE MISTOVICH

Royal & Smith Corona Typewriters  
 Summit Mini Calculators  
 Victor Adders & Calculators

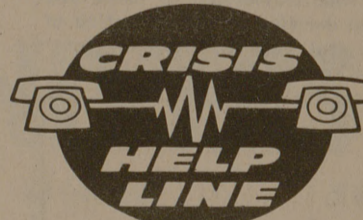
909 S. Main

822-6000

## HAVE A PROBLEM? NEED TO TALK WITH SOMEONE?

CALL CRISIS HELPLINE.  
 SOMEONE DOES CARE.

846-7727

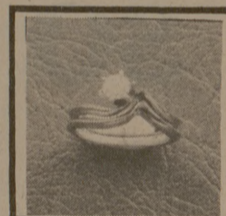
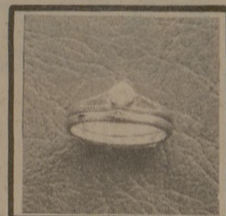


CRISIS HELPLINE is a free public service to residents of the Brazos County area. Trained counselors are eager to help you with your problems.

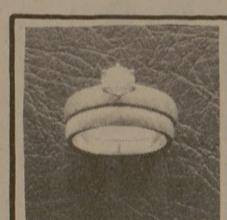
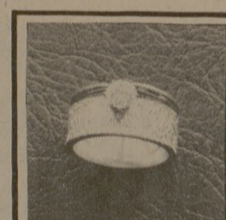
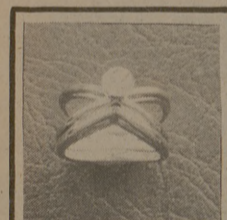
For marriage problems, school hassles, drugs, pregnancy, parental problems, loneliness, depression, or other problems . . .

. . . WE CARE.

## BUILDING BLOCKS



## of LOVE



EXPRESS YOUR LOVE FOR YOUR FUTURE BRIDE WITH LOVE'S OLDEST SYMBOL OF DEVOTION AND HAPPINESS . . . . .

.25 CARAT STYLES . . . 195.00

.33 CARAT STYLES . . . 255.00

.50 CARAT STYLES . . . 485.00

- INDIVIDUAL STYLING AND FABULOUSLY LOW PRICES ARE COMBINED TO PRESENT THIS ELEGANT EXPRESSION OF LOVE.
- DIAMONDS OF THE HIGHEST QUALITY FROM ONE OF TEXAS' FINEST CUSTOM JEWELERS... BNB TRADING COMPANY OF DALLAS.
- ALL STYLES AVAILABLE IN 14 KARAT WHITE OR YELLOW GOLD.

CONTACT THESE CAMPUS REPRESENTATIVES

TO SEE THE COLLECTION:

HANK PAINE '73 - 845-4850

MARK BLAKEMORE '74 - 845-6000

SUSAN LIVINGSTON '75 - 846-3647

## Treasurer

### Sheryl Caronia

**What are your qualifications?**

"I am a junior accounting major and am working as Accounting Assistant for the Former Students' Association. I work as an accountant for the Public Relations Organization of the MSC."

**What is your platform?**

No comment.

**Should A&M have a shuttle bus users' fee and optional athletic fee?**

"I do not think that the optional athletic fee is a good idea. It could cause added expenses in attending football games, baseball games or any other sports event sponsored here."

**Should all students pay for intramurals?**

No comment.

### David White

**What are your qualifications?**

"I am treasurer of the TAMU Residence Hall Association and was a member of the SCONA 18 Finance Committee and am knowledgeable in the operations of the Student Finance Office and budgetary procedure. I was Outstand-

ing Sophomore in the College of Business and the recipient of an outstanding Accounting Award."

**What is your platform?**

"More student input is needed into student fee allocations. I would hold hearings of the allocation committee in which interested students could present their views. Students should have more influence on matters that concern them."

"I am in favor of students serving on the Board of Directors, student book exchange and housing."

**Should A&M have a shuttle bus user's fee and optional athletic fee?**

"I favor a combination student service fee. Users of a shuttle bus should have to pay user fee comparable to the parking fee now paid by students who own cars. The athletic department should rely less on student service fees and more on contributions from alumni and gate receipts. I should also economize by cutting out such items as hiring tutors since free tutoring is available everywhere through TAMSS."

**Should all students pay for intramurals?**

I would not object to a user fee to cover administrative costs. Adequate facilities should be provided for all activities at the University."

## Skeet And Trap Club Take First Place In Beaumont

The Texas A&M Skeet and Trap Club took a first place overall trophy in its first non-collegiate shoot at Beaumont this weekend.

Shooting for the team were Bill Beach, Randy Thomas, L. C. Rush, Tony Mazzaecario who took first in handicap with an 86 and won high overall, and James McKee, winner of the Class B 16 yard trap shoot with

a 93. The team will go to the National Intercollegiate Championship shoot at Lynn Creek, Missouri April 25-30.

Last year the team, shooting its first championship match, took Class A, D, and E American Skeet, placed second over all in modified clay pigeon and fourth place International Skeet.

## READ BATTALION CLASSIFIEDS

# SALE

### MILITARY SHOES

1/3 Off  
 While they last

SHIRTS  
 1/4 Off

ONE TABLE JEANS  
 30-60% Off

MEN'S JACKETS  
 \$10.95  
 Values to \$40.00

CLOSE-OUT-ON SHOES  
 \$5.95 to \$12.95  
 Value to \$34.00

TENNIS SHOES  
 \$1.95  
 While they last

WALK SHORTS  
 60% Off

SWEAT SHIRTS  
 \$1.50  
 Reg. \$3.95

# LOUPOT'S

Across From Post Office