

CADET SLOUCH by Jim Earle



"I'm giving odds that we have th' winner here!"

Walker Gets Police Award



Lt. Walter O. Walker

For the second year in a row, Texas A&M has had one of its University Police force named as the outstanding law enforcement officer for Brazos County by the Bryan-College Station Jaycees.

Lt. Walter O. Walker, a police officer in the area for the last eight years, received the honor and a plaque Thursday night at a dinner sponsored by the Jaycees, the American Legion Post and Bailey Distributing Co.

Mervin Peters presented Walker with the honor on behalf of the Jaycees and described him as being "the type of police officer who, both on and off duty, projects those qualities which always reflect credit upon law enforcement personnel."

"He is quiet and unassuming, gentlemanly in all his conduct and loyal to those principles which have made America strong. He exemplifies the type of officer which our changing society demands and expects of modern day law enforcement personnel."

Listen Up—

Right On Rock & Roll

Editor: Right on Texas R&R, Elton John, and Communications.

Those construction workers who sneered at the longhairs on Nov. 8 have a lesson in spirit coming to them. A&M has a reputation for its audiences of apathy and downright disrespect. A great deal of the blame is laid towards the poor sound, seating and sight characteristics of G. Rollie White.

Yet technicians very slowly and carefully set a stage Wednesday night, very obviously not for the band that was coming, but for someone who was to follow.

What happened then showed that we can indeed be carried to our feet by something that far exceeds the constraints of sheer brute strength, and that all the blame has not been ours.

Family played first, reaching all too momentary glories of hard on rock. They played just long enough and just well enough to whet an appetite for some real music, something to transcend the half empty but expectant hall of Rollie White.

After intermission, amazing galls was first to appear, it seemed, but is Beethoven taped all too wrong an introduction for a man who is demonstrably not unfamiliar with what has passed before in music?

Elton John came on alone,

across the stage, in unbelievable green sequined tails and cheap white plastic women's sunglasses.

He sat at the piano, still alone, played and sang, the amplifier making all sound harsh and all to unclear. One waited, and the spaces made by lights and amps for his backup group were filled.

Then began the night. Play on they did, alternating emphases, throwing corny showmanship, but wistful, Hollywood style lighting flashes, and the music ever growing deeper. Many did not stay long enough. I can not imagine how they could leave many for their myriad reasons had not come at all.

Yet the quality of the driven instrumental, the ability to perform at length to build the audience and the show, the confidence, the capability and the change, these things make the Artist of this kind of stage.

Elton John played old things and surprised us with even finer new. He touched the classical and the classic forms of jazz. He made G. Rollie a place alive, and he played long enough to make it real.

We do not expect this kind of thing, we did not hear differently soon enough. If it were to take place again tomorrow, there would be enough folk out to fill the house and make all satisfied. Yet not enough knew; the money end makes similar shows less likely. I for one want again to thank those who brought, who came, and who played.

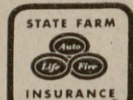
I want to ask if there is not some way that we can bring more of this kind of quality to this campus, so all could share in the good things that are beyond our simple boundaries.

Terence P. Yorks

State Farm is still paying big car insurance dividends

... currently 20% to eligible Texas policy-holders on expiring six-month policies.

U. M. Alexander '40
221 S. Main Bryan
Phone: 823-0742



STATE FARM MUTUAL
AUTOMOBILE INSURANCE COMPANY
Home Office: Bloomington, Illinois

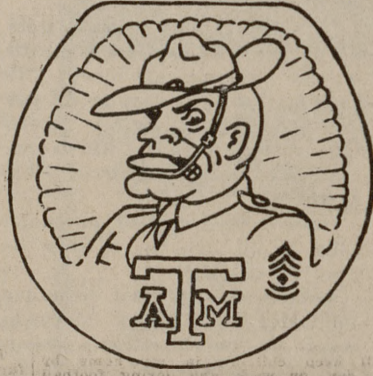
ALLEN Oldsmobile Cadillac

SALES - SERVICE
"Where satisfaction is standard equipment"

2401 Texas Ave.
823-8002

GIG'EM AGGIES

GIG'EM



GIG'EM

POT - TOPS
Handcarved Mahogany
Great New Gift Idea!
Two Sizes Regular or Elongated

\$14.95

Hanover Building Materials

1512 Finfeather

823-0096

The Battalion

Opinions expressed in The Battalion are those of the student writers only. The Battalion is a non-tax-supported, non-profit, self-supporting educational enterprise edited and operated by students as a university and community newspaper.

LETTERS POLICY

Letters to the editor must be typed, double-spaced, and no more than 300 words in length. They must be signed, although the writer's name will be withheld by arrangement with the editor. Address correspondence to Listen Up, The Battalion, Room 217, Services Building, College Station, Texas 77843.

Members of the Student Publications Board are: Jim Lindsey, chairman; Dr. Tom Adair, Dr. R. A. Albanese, Dr. H. E. Herth, W. C. Harrison, J. W. Griffith, L. E. Kruse and B. B. Sears

The Battalion, a student newspaper at Texas A&M, is published in College Station, Texas, daily except Saturday, Sunday, Monday, and holiday periods, September through May, and once a week during summer school.

Represented nationally by National Educational Advertising Services, Inc. New York City, Chicago and Los Angeles.

MEMBER

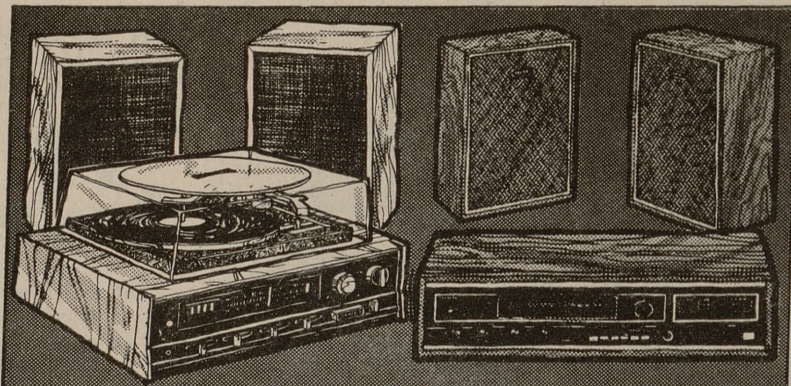
The Associated Press, Texas Press Association
The Associated Collegiate Press

Mail subscriptions are \$3.50 per semester; \$6 per school year; \$6.50 per full year. All subscriptions subject to 5% sales tax. Advertising rate furnished on request. Address: The Battalion, Room 217, Services Building, College Station, Texas 77843.

The Associated Press is entitled exclusively to the use for reproduction of all news dispatches credited to it or not otherwise credited in the paper and local news of spontaneous origin published herein. Rights of reproduction of all other matter herein are also reserved.
Second-Class postage paid at College Station, Texas.

EDITOR MIKE RICE
Managing Editor Larry Marshall
News Editor Rod Speer
Women's Editor Janet Landers
Sports Editor Bill Henry
Assistant Sports Editor Kevin Coffey

CHOICE OF TWO GREAT \$134.95 STEREOS FROM ZALES GIFT COLLECTION!



\$134.95 Lloyd's AM-FM, FM-Stereo With 4-Speed Phonograph

Has a full-size 4-speed automatic turntable, 2-air-sealed enclosures with 6 1/2-inch speakers, slide controls, black-out tuning dial, and a full complement of input and output jacks.

\$134.95 Sharp AM-FM, FM-Stereo With 8-Track Player

Large air-sealed enclosures with 8-inch speakers, manual or automatic 8-track channel selectors, push-button controls, all necessary input and output jacks, solid state circuitry.

Five convenient ways to buy:
Zales Revolving Charge • Zales Custom Charge • BankAmericard • Master Charge • Layaway

Layaway Now for Christmas!

ZALES
JEWELERS

We've got the whole world working for you.

NOW OPEN THE NEW EAST GATE LOUNGE

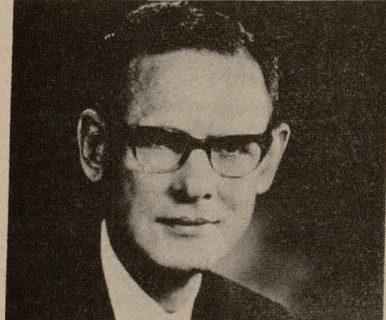
Under New Management

MONDAY NIGHT SPECIAL

\$1.00 A Pitcher — 8 - 10 p. m.

109 Walton Dr. — 846-9819

Hear Dr. Charles Allen in a Baptist-Methodist "Happening"



DR. CHARLES ALLEN
Pastor of First United Methodist Church of Houston, author and newspaper columnist.

7:30 p. m. Sunday, Monday, Tuesday, Nov. 12-14

First Baptist Church of College Station

11 a. m. Monday, Tuesday, Nov. 13-14.

A&M United Methodist Church

IT WILL MAKE YOUR DAY



INTERESTED IN AN INTERNATIONAL CAREER?



MR. JEROME HOLMES

will be on the campus Thursday November 16, 1972

to discuss qualifications for advanced study at THUNDERBIRD GRADUATE SCHOOL and job opportunities in the field of INTERNATIONAL MANAGEMENT

Interviews may be scheduled at The Placement Office

THUNDERBIRD GRADUATE SCHOOL OF INTERNATIONAL MANAGEMENT

Glendale, Arizona 85301

Affiliated with The American Management Association

Starfire
Kearnsake
Douglas Jewelry
212 N. Main 822-3119

PAWN LOANS
Money Loaned On Anything Of Value.
Quick Cash For Any Emergency.
See Us For Ready Cash Today.
Texas State Credit Pawn Shop
1014 Texas Ave. Bryan Weingarten Center

Ponderosa Specials

- Friday Evening Fish Fry — \$2.00
- Sunday Noon Lunch \$2.00
- Special Weekend Rates for Parents & Students

Call 846-5794

Ponderosa Motor Inn

PALACE
NOW SHOWING 2:30 - 5:45 - 9:00 P. M.
"FIDDLER ON A ROOF"

CAMPUS
NOW SHOWING 1:45 - 3:10 - 5:30 - 7:30 - 9:30

KANSAS CITY BOMBER
METROCOLOR
PG

TONITE AT 12:00 P. M.
"MONTEREY POP"

QUEEN
ADULT ART—TONITE
"PLAYTHING AFTER DARK"

Skyway Twin
DRIVE-IN

TONITE EAST SCREEN AT 6:30 P. M.
"MAGNIFICENT 7 RIDERS" (PG)
At 8:15 p. m.
"HANG 'EM HIGH" (PG) With Clint Eastwood

TONITE WEST SCREEN AT 6:30 P. M.
"SUMMER OF '42" (R) With Jennifer O'Neal
At 8:15 p. m.
Jane Fonda In "KLUTE"

CIRCLE
DRIVE-IN

TONITE AT 6:30 P. M.
George C. Scott In "HOSPITAL" (R)
At 8:30 p. m.
"PAPER LION" (PG)