

Texas Voters Approve Eleven Constitutional Amendments

(Continued from page 1)

John Hill re-elected attorney general.
Robert S. Calvert, again named controller.
Armstrong, re-elected land commissioner.
Tunnell, named to another term as railroad commissioner.
Returns in the top races at 1 from 236 of 254 counties, complete, Democrats listed

first, Republicans second unless designated:
President: McGovern 660,400, Nixon 1,302,073; Linda Jenness Socialist Workers 5,905.
Senator: Barefoot Sanders 860,461, Sen. John Tower 1,040,312, Flores-Amaya Raza Unida 33,630, Tom Leonard SW 7,243.
Governor: Dolph Briscoe 910,544, Henry Grover 903,341, Ramsey Muniz RU 105,400, Debby Leonard SW 20,073.
The other statewide races:

Lt. Gov.: Bill Hobby, 1,295,748, Alma Canales RU 66,565, Meyer Alewitz SW 16,811.
Atty Gen.: John Hill 1,260,706, Tom Kincaid SW 35,002.
Comptroller: Robert S. Calvert 1,236,604, Anne Springer SW 78,467.
Land Commissioner: Bob Armstrong 1,231,722, Howard Petrick SW 30,076.
Railroad Commissioner: Byron Tunnell 1,038,607, Jim Segrest 617,461, Fred Garza RU 78,266.

Texas voters ordered legislative revision of the state constitution but rejected pay hikes for legislators and two top office-holders.
Although inconclusive in some cases, it appeared at a late hour that Texans approved 11 or 14 proposed changes in their 96-year-old constitution.
And the most sweeping was controversial Amendment No. 4, calling for the Legislature to provide an entirely new govern-

mental blueprint.
The present patchwork constitution was adopted in 1876, a period of citizen unrest after a decade of carpetbag government.
Voters turned thumbs down on salary increases for legislators, the lieutenant governor and the speaker of the Texas House.
In something of a surprise, voters indicated they prefer four-year terms for their governor and many other statewide officials, who now serve for two

years.
Voters were less enthusiastic about a dual office holding amendment, No. 12, but it was winning narrow approval as the count continued.
Returns from 201 counties, 45 complete:
1. Legislators' pay hikes: For 502,730, Against 549,040.
2. Lamar hospital district: For 589,706, Against 333,727.
3. Peace justice salaries: For 700,399, Against 311,284.

4. Constitution commission: For 604,086, Against 395,118.
5. Veterans' tax exemption: For 789,163, Against 265,166.
6. Elderly tax exemptions: For 739,713, Against 281,932.
7. Civil equality: For 841,794, Against 223,917.
8. Four-year terms: For 599,676, Against 511,302.
9. Conservation district dual pay: For 488,353, Against 485,002.
10. Constitution procedures: For 523,864, Against 404,312.
11. Speaker and Lt. Gov. pay: For 400,923, Against 604,625.
12. Dual office holding: For 528,955, Against 443,661.
13. Bond interest increase: For 534,622, Against 397,307.
14. County school funds: For 554,969, Against 420,566.

State Sen. Barbara Jordan of Houston took an early and commanding lead over Republican Paul Merritt and Socialist Workers party candidate Manuel Barrera in her bid to become the first black in the U.S. House since Reconstruction.

Two incumbents, Republican Bob Price of Pampa and Democrat Graham Purcell of Wichita Falls, were in a nip-and-tuck battle in District 13, with Price having a slight but inconclusive lead.

Early returns had Republican Alan Steelman ahead of incumbent Democrat Earle Cabell in Dallas District 5.

Other incumbent congressmen led their opponents with state Sen. Charles Wilson ahead of Republican Charles Brightwell in District 2 in East Texas.

Democrat Dale Milford held an early lead over Republican Courtney Roberts in the newly created 24th District in the Dallas-Fort Worth mid cities area.

Returns at 12:30 a.m., Democrats first, Republicans second except where noted:

Dist. 2: Charles Wilson 24,336, Charles Brightwell 9,211.

Dist. 4: Rep. Ray Roberts 34,516, James Russell 13,786.

Dist. 5: Rep. Earle Cabell 38,280, Alan Steelman 53,266.

Dist. 6: Rep. Olin Teague 40,858, Carl Nigiazzo 20,286.

Dist. 7: Jim Brady 18,708, Rep. Bill Archer 84,241.

Dist. 8: Rep. Bob Eckhardt 54,097, Lewis Emerich 28,688, Susan Ellis SW 571.

Dist. 9: Rep. Jack Brooks 25,585, Randolph Reed 12,914.

Dist. 10: Rep. J. J. Pickle 12,056, Melissa Singler SW 199.

Dist. 13: Rep. Graham Purcell 34,957, Rep. Bob Price 34,991.

Dist. 18: Barbara Jordan 64,733, Paul Merritt 15,176, Manuel Barrera SW 1,034.

Dist. 20: Rep. Henry Gonzalez 49,420, Steven Wattenmaker 1,075.

Dist. 21: Rep. O. C. Fisher 37,780, Doug Harlan 30,240.

Dist. 22: Rep. Bob Casey 41,442, James Griffin 15,330, Frank Peto Ind. 569.

Dist. 24: Dale Milford 44,772, Courtney Roberts 24,824.

PAWN LOANS

Money Loaned On Anything Of Value.
Quick Cash For Any Emergency.
See Us For Ready Cash Today.

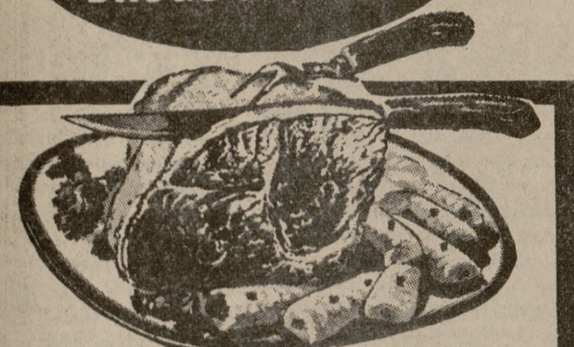
Texas State Credit Pawn Shop
1014 Texas Ave., Bryan Weingarten Center

Next time you light up a cigarette, get a look at your kid's face

AMERICAN CANCER SOCIETY

THIS SPACE CONTRIBUTED BY THE PUBLISHER

SKAGGS ALBERTSONS DRUGS & FOODS



RUMP ROAST

98¢
BONE IN U.S.D.A. CHOICE BEEF
LB.

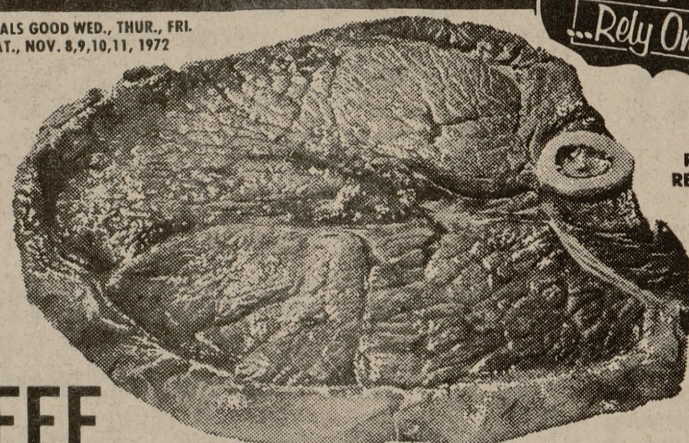
STEAK & POTATOES

ROUND STEAK

U.S.D.A. CHOICE BEEF

98¢
FULL CENTER CUTS
LB.

SPECIALS GOOD WED., THUR., FRI.
SAT., NOV. 8, 9, 10, 11, 1972



WE CARE ABOUT YOU
...Rely On It!

LIMIT RIGHTS RESERVED

BONELESS ROUND STEAK..... USDA CHOICE BEEF **\$1.18**
BONELESS TOP ROUND STEAK..... U.S.D.A. CHOICE BEEF **\$1.28**
Boneless Bottom Round Swiss Steak..... U.S.D.A. CHOICE BEEF **\$1.18**
CUBE STEAK..... LEAN NO-WASTE **\$1.48**
LONGHORN CHEESE..... SKAGGS-ALBERTSON'S HALFMOON **67¢**
SLICED CATFISH..... BLUE CHANNEL FRESH WATER CATFISH STEAK **98¢**
CHOPPED SIRLOIN..... EXCELLENT FOR THE GRILL **98¢**
BONELESS CHARCOAL STEAKS..... THICK CUT, JUICY TENDER, USDA CHOICE BEEF **\$1.48**

KRAFT PARKAY OLEO

4
1 LB. CARTON

JANET LEE GREEN BEANS

5
CUT 303 CAN

NABISCO CRACKERS

29¢
1-LB. PKG.

PUREX BLEACH

44¢
GAL.

JANET LEE CORN

5
CREAM STYLE OR WHOLE KERNAL 303 CAN

DELICATESSEN-SNACK BAR

IMPORTED BAKED HAM..... SLICED TO ORDER **\$1.69**
BBQ BEEF BRISKET..... PRODUCED FROM USDA CHOICE BEEF **\$2.25**
ECKRICH ALL MEAT BOLOGNA..... FOOD FOR SCHOOL LUNCHES **89¢**
TURKEY BREAST..... **\$1.99**
BIG EYE SWISS CHEESE..... MILD **\$1.39**

TIDE DETERGENT

\$1.98
FAMILY SIZE

SANDWICH BAGS..... ALBERTSON'S 80 CT. PKG. **29¢**

INSTANT BREAKFAST..... JANET LEE ALL FLAVORS ENVELOPE PACK. **49¢**

MUSTARD..... GARDEN CLUB 32 OZ. **29¢**



CHOCOLATE FUDGE CAKES

99¢
EACH FRESH DAILY FROM OUR OWN IN STORE BAKERY!!

COLORADO RUSSET POTATOES

2000
COMPARE OUR QUALITY!
LB. CELLO BAG. EA.

LARGE PECANS..... CREAM OF THE CROP **69¢**
TOMATOES..... VINE RIPE BEEFSTEAK **33¢**
GRAPEFRUIT..... LARGE SIZE TEXAS RUBY RED **5 FOR \$1**
LETTUCE..... CRISP, SOLID HEADS CALIF. **25¢**
MUSHROOMS..... LARGE SIZE BROWN KABOB **98¢**

COOKIES 3
11 OZ. PKGS. **\$1**

FROZEN FOOD

DRINK 10¢
BRIGHT & EARLY ORANGE 6 OZ. TIN

PIES 22¢
BANQUET CREAM 14 OZ.

BLACKEYES 3
10 OZ. PKGS. **\$1**

BAKERY

2 FOR \$1
APPLE FILLED COFFEE CAKES

30 FOR \$1
HARD ROLLS ONLY

DECORATIVE CAKES WITH THAT PERSONAL TOUCH
• WEDDING CAKES
• BIRTHDAY CAKES
• ALL OCCASIONS

SKAGGS ALBERTSONS DRUGS & FOODS

COLLEGE AVE. AT UNIVERSITY DRIVE

THE HOME OF LOW, LOW PRICES!