

The Best Is Best's Biggest Goal In 1972

Texas A&M thinks it might have the best defensive tackle in America. Make that Best, with a capital B.

Forgiving the play on words, Aggie defender Boice Best, a 6-1, 233-pound demon on defense, plays as well as his name suggests. The senior anchorman in the A&M front four is a legitimate All-America candidate.

After playing in the shadow

of his brother Bruce through high school and as a freshman at A&M, Boice has emerged to prove himself worthy of consideration for post-season honors. He was named to the All-Southwest Conference team as a junior on the strength of a performance which showed 95 tackles, 19 tackles for 64 yards in losses and two fumble recoveries. Against LSU last Saturday,

he led all tacklers with 12 solo tackles and three assists.

"I know what I have to do for us to win," he said. "I've got to beat my man on offense and get to the ball carrier. When the team passes, I've got to get to the passer. Those are things I have to do to satisfy myself."

That is the goal for every defensive lineman but for Best, these are not just idle dreams.

He lives this role in every practice and in every game and his coaches feel this will pay off for the big senior in times forthcoming.

A&M Coach Emory Bellard calls Best "a quality player. He's the equal of any in our league and maybe any league." Best's mobility is such that the pros are looking at him as a linebacker.

At Smiley High School in Hous-

ton, Boice teamed with his brother to lead his team to the state playoffs. Bruce, an All-America linebacker, drew most of the acclaim, while Boice, usually at the bottom of the pile, earned only all-state honors. But a knee operation ended Bruce's football early in the 1971 season, and Boice was left to carry on.

Best is one of the Aggie captains. He is married and the

father of a daughter. His wife Ruth is expecting another little Best in October.

Best has been disappointed in the Aggie season thus far, but he thinks the team will get straightened out this week against Army in A&M's home opener.

TRY BATTALION CLASSIFIED

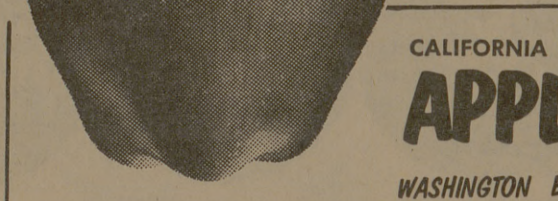


Boice Best

WE GIVE GREEN STAMPS WE ACCEPT FOOD STAMPS



WE ACCEPT FOOD STAMPS



isn't it great to save ON TOP QUALITY FOODS?

PIGGLY WIGGLY **ORANGE JUICE** Unsweetened 46-oz. Can 37¢

BONNIE BAKER **CORN MEAL** White 5 Lb. Bag 29¢

IMPERIAL **SUGAR** Pure Cane SUGAR 5 Lb. Bag 49¢

FROZEN FOOD SPECIALS
PATIO MEXICAN DINNERS 12-oz. Tray 49¢
GOLD KING HUSH PUPPIES Lb. Pkg. 39¢
BIRDSEYE GREEN BEANS 2 9-oz. Pkgs. 59¢
PIGGLY WIGGLY CUT CORN 20-oz. Pkg. 47¢

DISCOUNT HEALTH & BEAUTY AIDS
INTENSIVE CARE BATH BEADS 18-oz. pkg. list 1.19 89¢
VASELINE WHITE PATROLEUM JELLY 8-oz. jar list 69¢ 49¢
SUAVE HAIR SPRAY 13-oz. can list 79¢ 49¢
CUTEX OILY POLISH REMOVER 4-oz. bit. list 55¢ 39¢

CALIFORNIA RED DELICIOUS **APPLES** Extra Fancy lb 25¢

WASHINGTON BARTLETT **PEARS** lb 25¢

BELL PEPPERS ea. 10¢ TEXAS CUCUMBERS ea. 10¢ SUNKIST LEMONS 6 for 39¢

TOILET TISSUE Delta 4 roll pkg. 29¢

DRY MILK Bonnie Baker instant 8 qt. box 98¢

WOLF CHILI No Beans 19-oz. can 69¢

SALTINES Wortz Crackers Lb. Pkg. 19¢

PIGGLY WIGGLY FEATURES PROTEIN HEAVY BEEF. This label means "Assured Tenderness". Carefully fed for top quality - It's the best in heavy beef; Then specially Selected, cut, and trimmed the way you like it.

WE SPECIALIZE IN SWIFT PREMIUM PROTEIN, GUARANTEED TENDER HEAVY BEEF.

SWIFT PREMIUM PROTEIN HEAVY BEEF \$1.19
TOP ROUND STEAK Boneless Lb. 1.19
SWIFT PREMIUM PROTEIN HEAVY BEEF \$1.19
BOTTOM ROUND Boneless Lb. 1.19
SWIFT PREMIUM PROTEIN HEAVY BEEF \$1.49
MANHATTAN STEAK Boneless Lb. 1.49
SWIFT PREMIUM PROTEIN HEAVY BEEF \$1.39
LOIN TIP STEAKS Lb. 1.39
SWIFT PREMIUM PROTEIN HEAVY BEEF \$1.29
LOIN TIP ROAST Lb. 1.29
SWIFT PREMIUM PROTEIN HEAVY BEEF \$1.99
RUMP ROAST Lb. 1.99
SWIFT PREMIUM PROTEIN HEAVY BEEF \$1.99
PIKES PEAK ROAST Lb. 1.99

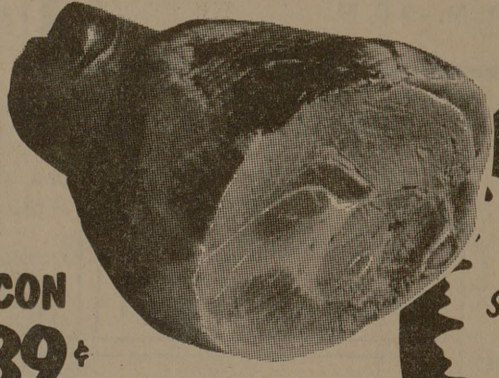
CENTER CUT RIB PORK CHOPS Lb. 99¢
CENTER CUT LOIN PORK CHOPS Lb. 99¢
THIN BREAKFAST PORK CHOPS Lb. 1.19
FAMILY PACK PORK CHOPS Lb. 87¢
BOSTON STYLE PORK ROAST Lb. 65¢
LEAN & TENDER PORK STEAKS 3 to 5 Lb. Avg. Lb. 79¢
PORK RIBS Lb. 79¢

STEW MEAT Boneless 99¢

CUT-UP FRYERS Contains 2 leg qtrs. 2 breast portions 2 wings plus giblets & backs Lb. 29¢

CUBE STEAKS Tender \$1.59

SLICED BACON Super Taste Lb. 89¢



SLICED PICNICS Decker's whole Lb. 49¢

CENTER PICNIC Decker's Slice Quality Lb. 59¢

SALAD DRESSING Bama Tart & Creamy Qt. Jar 39¢

Limit 1 Please with \$5 or more Purchase

DECKER'S QUALITY **PICNICS** Smoked WHOLE Lb. 43¢

FACIAL TISSUE Soft Ply 200 Ct. 2 Ply Box 15¢

LIMIT 2 PLEASE WITH OTHER GROC. PURCHASE.

\$700 WINNER
CASH JACKPOT NOW WORTH **\$300**
Jack Parks Somerville, Texas

Piggly Wiggly Cut Golden Green Beans, Corn, Peas 5 16-OZ. CANS \$1.

BONNIE BAKER **HOMO MILK** LOW FAT Gal. Ctn. 99¢
BONNIE BAKER **BREAD** 3 1/2 Lb. Loaves 87¢



3 FINE STORES TO SERVE YOU
4300 Texas Ave.
3516 Texas Ave.
200 E.24th St.
COLLEGE STATION AND BRYAN, TEXAS
Quantity Rights Reserved

We Give Double S&H Green Stamps every Tuesday with \$250 or more purchase.

THESE PRICES GOOD THURS. FRI. & SAT. SEPT. 28, 29 & 30, 1972