

The Battalion

Vol. 67 No. 13

College Station, Texas Wednesday, August 16, 1972

845-2226

Clear
and
warm

Thursday — Cloudy to partly cloudy. Afternoon thundershowers, easterly winds 5-10 mph. High 94°, low 71°.

Friday — Partly cloudy, southerly winds 10-15 mph. High 92°, low 74°.

County court okays campus polling place

A plan for realigning Precinct 9 in College Station to include an on-campus polling place for A&M students was approved Monday by the Brazos County Commissioners Court.

Worked out by members of the Student Government at TAMU, the plan provides for dividing Precinct 9 into three precincts including one composed of the university campus.

It will become effective March 1, 1973, by a 4-1 vote of the court.

A second proposal presented to the Commissioners Court by Student Body President Layne Kruse and Barb Sears, Student Senate external affairs chairman, failed to pass.

The student proposal would have moved the Precinct 9 box from A&M Consolidated to G. Rollie White Coliseum for the November general election. It had President Jack Williams' and Dr. Carl Landiss' approval.

Kruse said the readjusted precinct lines break up Precinct 9 into three precincts geographically defined by University Drive north to the College Station city limit, University Drive south to

Jersey Street and south of Jersey to Holloman Drive, with the latter's western boundary moved from Fairview Avenue west to FM 2154. The new precincts remain to be numbered.

The present large precinct, according to voter registration lists provided by County Judge William R. Vance, has a 3,718 voting population.

"State law requires 2,000 maximum per precinct," Kruse pointed out, "so the precinct lines had to be readjusted."

Commissioner Raymond Nolan, Pct. 1, made the motion to accept the student proposal. The motion received support of four of the five commissioners.

Kruse said the new alignment encompasses 1,040 registered voters in the new University Drive-city limit precinct; 1,381 on campus, and 1,284 in the Jersey-Holloman area.

Kruse said another voter registration drive planned on campus this fall may push the campus precinct too high, necessitating another division of the box. He said 6,000 students now live on campus, with more projected.

A breakdown of the voter registration list covering the new north College Station precinct "reveals interesting information," Kruse added. It includes 562 registered voters in the College View area and 488 in the North Gate area. Of the latter, 234 voters are below age 25 and 66 are over age 35.

The president said details of the precinct organization are to be worked out. Thinking is that the on-campus polling box would be located at the Memorial Student Center.

"I think a lot of students will be willing to get involved and work on it," he said, "because of political activism among young people."

"It would have been convenient for nearly everyone if the second proposal relocating the Precinct 9 box for this fall's election had passed," Kruse evaluated. "I'm happy with the outcome though."

The second proposal was rejected, according to Judge Vance, because Precinct 9 Chairman Dr. E. E. Burns has already made arrangements for the polling place to be at A&M Consolidated.



SCHOOL FINISHED WITH a splash for high school science teachers completing a five-week course here Friday. Charles Wall, water utilities training instructor at A&M's Engineering Extension Service, was thrown into

the final clarifier at the TAMU wastewater plant. Ed Ganze of Mesquite and Fred D. Brown Jr of Garland threw Wall into the final process tank, which Wall claims is very clean processed water.

School year preparations include on-campus women

Preparation for the 1972-73 school year at A&M will include extensive activities for women students, to be housed on-campus for the first time this fall.

They will be in the new C. C. Krueger and J. Harold Dunn Residence Halls.

TAMU fall semester classes begin August 28. Organizational activities occur August 21-25, along with delayed registration for new students and returning students who did not pre-register last spring.

Orientation week activities for women will include training for 18 resident advisors who will live in Krueger and Dunn Halls, orientation for all new coed students by a new women's organization—Cwens—and activities of Omega

Phi Alpha, national service sorority, according to Dean of Women Toby Schreiber.

Coed graduate students Betsy Price of East Orange, N. J., and Mary Ann Glueck of Cat Spring will be head residents in Krueger and Dunn Halls. Eighteen undergraduate upperclass coeds will be resident advisors. They begin training August 22.

Alpha Zeta Chapter of Cwens, sophomore honor organization dedicated to service on campus, plans an orientation Saturday, August 26, for all freshman girls.

Cynthia Galbreath of Houston is president of the Cwens chapter, installed at TAMU last spring. Cwens, which replaced University Women, recognizes academic

achievement as well as leadership during the freshman year. It annually inducts new sophomore members, consisting of no more than 10 per cent of the freshman women.

OPA, chaired by Stuart Stewart of Bryan, plans a variety of activities for women next week.

OPA's brother fraternity, Alpha Phi Omega, will provide manpower to help coeds move into Krueger and Dunn Halls during the week.

Mrs. Price, whose husband Wayne is head resident for male students in Dunn Hall, is studying for a master's degree in education. She was a resident advisor in an upperclass dorm at Southwestern University where she graduated in 1970.

Dean Hannigan returns home with smiles, sign Thursday

A&M Dean of Students James P. Hannigan returned to his home Thursday, reporting he was "glad to be back with the Aggies."

The dean was flown by Army helicopter to Easterwood Airport and returned to his home for continued convalescence after suffering a serious heart attack in Florida in late June. He had been moved to San Antonio's Brooke Army Hospital last month.

Five Alpha Phi Omega national service fraternity members, the dean's wife and Malon Southerland from the dean's office met the helicopter.

Dean Hannigan gave the group the "Gig 'Um" sign from inside the chopper and walked to his car.

"I feel great," he said smiling. "I challenge you to a 100 yard dash... as long as you give me a 98 yard handicap," he quipped to one of the group.

He also carried a hand-lettered sheet of paper which read "Aggies are the best people in the world—Hannigan."

"I brought the sign in case the engine noise prevented me from being heard," he reported.

His medical trip from Florida was aboard the same Air Force plane used to transfer Gov. George Wallace from Maryland to Miami to Alabama. The helicopter and Air Force plane both had Aggie pilots, which the dean said "shows Aggies are everywhere."

The dean arrived in high spirits with a broad smile. Doctors, however, have ordered a month's convalescence to build his strength.

Leadership Conference begins Friday in Palestine

A&M student leaders will establish working bases for the 1972-73 school year at the Memorial Student Center Fall Leadership Conference Aug. 18-20.

The three-day conference at the Lakeview Methodist Assembly grounds near Palestine will feature student-to-student and student-to-administration sessions designed to develop working relationships.

"We hope to have 80 students and 20 faculty-staff involved," indicated Joe Arredondo of Goliad, conference chairman.

Invited to participate are student leaders of the MSC executive council and committee chairmen, Student Senate, Civilian Student Council executive committee and residence hall presidents, the Cadet Corps staff and corps commanders, Graduate Student Council representative Dick Zepeda, the Dean of Women's council and dormitory head residents.

Students will participate in encounter groups of eight to 10 people each in the first phase of the conference, conducted by Charles

E. McCandless, associate dean of the College of Liberal Arts. McCandless will employ sensitivity-type Encounter Tapes developed by the Western Behavioral Science Institute of La Jolla, Calif., in the Friday and Saturday sessions.

A Sunday question-answer panel moderated by Kent Caperton of the president's office will bring together students and administrators.

The panel will consist of Dean of Men Charles Powell, Dean of Women Toby Schreiber; Robert H. Rucker, university landscape architect and soil and crop sciences professor; Tom D. Cherry, vice president for business affairs; Col. Robert F. Crossland, professor of aerospace studies, and Col. Clarence E. Hogan, professor of naval science.

After-lunch small group sessions will allow student leaders closer contact with the faculty-staff members.

A Saturday evening barbecue will be sponsored by the Association of Former Students, with Ted Maffitt, A&M graduate of Palestine, handling arrangements.

New ETV operation will be improved and efficient



Microwave equipment carrying KAMU-TV signals from the Educational Television building to the station's transmitter-antenna site in Hensel Park will be mounted on this 100-foot tower.

Electronics installation is progressing on schedule in the Educational Television Department at A&M.

Relocated last spring, ETV will be ready for closed circuit classroom presentations and courses taught in its studios at the start of the 1972-73 school year Aug. 28.

The department moved into its own specially-designed building southeast of Kyle Field in March. Allocations enabled purchase of new equipment for all ETV programs, including a new RCA color television transmitter for KAMU-TV.

During the time the ETV public television station has been off the air, the exact location for the transmitter and antenna was changed, requiring a 60 to 90 day postponement of the time KAMU planned to resume broadcasting, according to Dr. Mel Chastain, ETV director.

Original plans called for leasing a tower. New plans include construction of the station's own tower.

"The additional time required to design and construct our 378-foot tower and antenna is the primary reason for the delay," Chastain said.

A two-kilowatt RCA transmitter, ETV's former one-KW GE transmitter and the antenna will be located in Hensel Park. Signals will be microwaved from the

building to the transmitter-antenna site.

"Equipment installation and tests in the on-campus building will be completed by the end of August," Chastain said. He indicated work in the new building is 80 per cent complete overall.

The transmitter-antenna arrangement in on the drawing-board. It includes conversion of part of a building, tower construction and transmitter-antenna installation by ETV technicians headed by George Shearer.

Improved signal quality of the new equipment will make the wait for KAMU-TV to return to the air worth it, Chastain believes. He noted that with the GE as a back-up transmitter, failure of the RCA machine will cause a two-second interruption of picture and sound reaching viewers' receivers.

Studios and engineering quarters are near completion and include a number of unique features. The engineering control center where all video, audio and internal communications is controlled and control rooms for 3,600-square-foot and 1,600-square-foot studios include "a lot of sophisticated electronics work,"

University National Bank "On the side of Texas A&M." —Adv.

Chastain said.

The engineering staff has dubbed the former the "Star Trek" room, after the space ship command deck in the TV series.

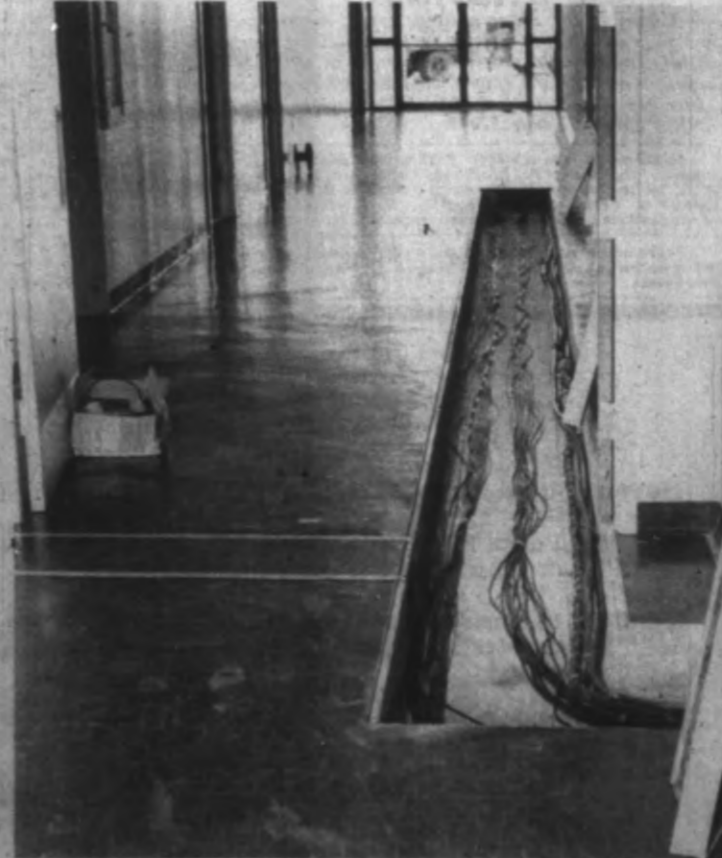
"It's fantastic," Chastain credited. "And George and his crew did it from the ground up. They have strengthened my respect for their abilities."

Part of their work consists of tying together two video switchers, which will allow multiple imaging called video effects. "This is a highly sophisticated task. It involves hundreds of cables of varying lengths that have to be timed to determine phasing and then cut to just the right length," the director explained. "The length affects phasing, which in color TV affects color balance. It is going to take time, and we can't begin until all the switchers are here."

A computer program was designed and run to determine phasing feasibility between the switchers. The process will involve four color cameras, with signals from all four showing up on either switcher at any given time.

ETV acquired two new Norelco Plumbicon color cameras, to go with two color and two black-and-white cameras moved from Bagley.

"Here, we have two in-house control rooms," Chastain added. (See TV Station, page 4)



An interior view of the building shows some of the many cables needed to broadcast a television show. The inside is designed with convenience in mind, so much of the equipment will be easily accessible to workers. (Photo by John Curylo)