

# Scientists receive data on rangelands from satellite

A&M scientists will receive photographs and data from the first Earth Resources Technology Satellite (ERTS) for a comprehensive study of Central U. S. rangelands.

The spacecraft designed to collect environmental information was launched several weeks ago from Longue, Calif. It will transmit scientific data and photographs to earth stations for a year, and probably longer, the

National Aeronautics and Space Administration reported.

TAMU's study will use the spacecraft's remote sensors to study the stages of rangeland growth—from dormant through full bloom to the winter dormant stage.

Ten test sites involving 25 scientists from Weslaco to Mandan, N. D., are cooperating in the study. The test sites are at Weslaco, College Station, Sonora

and Throckmorton (all TAMU range research facilities) and range experiment stations at Chickasha and Woodward, Okla.; Hays, Kan.; Sand Hills, Neb.; Cottonwood, S. D., and Mandan, N. D.

Dr. John W. Rouse Jr., director of TAMU's Remote Sensing Center, is principal investigator on the study.

Dr. Robert H. Haas of the Range Science Department here

said one primary interest area is the "green wave," or advancement north of new vegetation each spring.

He pointed out the green wave advances as the sun moves approximately 17 miles a day to the north each spring bringing growth temperatures to the vegetation.

ERTS data will be used with climate and geographic information to build a model of Central

U. S. rangeland under a variety of natural weather conditions.

The 1,965-pound, 10-foot long butterfly-shaped spacecraft is in a 517-mile high near-polar orbit to circle the earth every 103 minutes. Dr. Haas said a series of photographs on the Central Great Plains will be made every 18 days for scientific interpretation.

Dr. Haas said the TAMU study goals are:

—ERTS is a new information source to agri-business. Much agriculture is tied directly to how well the vegetation is growing in the great plains. For example, ranchers ship large numbers of cattle each summer to northern pastures. ERTS can tell how the range is shaping up.

—Time is important in range development.

—Local land forms and the green wave can be recognized

from sensors.

—A computer model can be built using natural vegetation to interpret such things as drought and map vegetation conditions over a large geographical area.

Dr. Haas expects the first series of photos by mid-August. The U. S. and 31 other countries are participating in the NASA-guided project.

ERTS-1's eyes, the remote sensors, include three Return Beam Vidicon (RBV) cameras and a Multispectral Scanner (MSS). Also aboard is a Data Collective System (DCS) for environmental data.

The three sensors will monitor earth's natural resources more thoroughly and completely than ever before, Dr. Haas added.

## New hall counselors assigned

Assignment of new residence hall counselors, the resident director for the new Krueger and Dunn Halls and reassignment of other counseling personnel for A&M's 1972-73 school year have been announced by Associate Dean of Students Howard Perry.

Joining the group that provides counseling services for 20 halls, university-operated apartments and day students are Wilbur G. Ferris, Warren Faulkner and U. W. (Rick) Crow Jr.

They join Kirby D. (Rusty) Blevins, R. L. Chapman, Larry Pollock, Jerry Mainord and Patricia Self, women's counselor who works through the office of Dean of Women Toby Schreiber.

Faulkner, 23, will have counseling responsibility for Law, Puryear and Hart Halls—A 1971 TAMU graduate, he completed the master's in educational psychology last spring and is from Bryan.

Crow, 24, will serve Davis-Gary, Moore, Crocker and McInnis Halls, which have been the top dorms academically in the residence hall program competition for the last four years. Son of Ulrich W. Crow of the Counseling and Testing Center, he is an A&M Consolidated High School graduate, completed the B. S. in education last spring and is working on the master's degree.

Ferris will have overall responsibility for the new halls opening this fall. Each will have a graduate student advisor. Formerly of Oklahoma, Ferris comes to A&M from Tulane where he received the master's in education and was member of Kappa Delta Phi. Ferris has daughters at the University of Florida and Baylor, a high school-age son and junior high-age daughter. He served in the Navy and attained the rank of commander.

## TRY BATTALION CLASSIFIED

### Kiddie Korner Day Care Nursery

803 Mary Lake

Now Open

Accepting applications now. Ages 2-12. After school care and drop-ins. State Licensed.

"A Home Away From Home"

Owned and operated by Mrs. Harlan A. Knezek 846-6322

### MONEY

Loaned on Anything of Value

Sports equipment  
Stereo equipment  
Guitars-Amps  
Jewelry-Tools  
Guns-Cameras

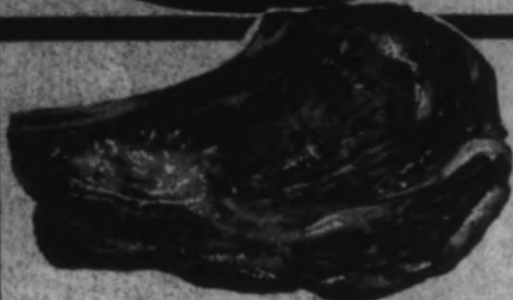
No credit record required! Come to see us. Get a pawn loan of \$30 and receive \$2.00 free on your first loan.

Texas State Credit  
1014 Texas Ave.  
Weingarten Center

**SKAGGS ALBERTSONS**  
DRUGS & FOODS

# SIZZLIN SAVINGS

AUG. 9, 10, 11, 12, 1972



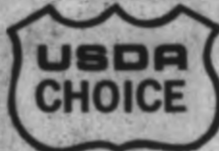
**RIB STEAK**

USDA CHOICE BEEF LB.

**98¢**

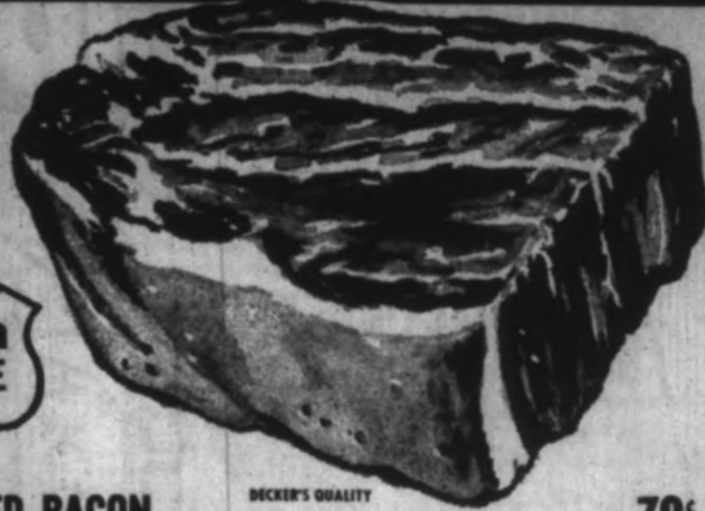
# ROAST

**BONELESS SHOULDER**



USDA CHOICE BEEF LB.

**88¢**



SLICED BACON

WIENERS

BONELESS HAM

LUNCHMEAT

SLICED CATFISH STEAKS

GROUND BEEF

LONGHORN CHEESE

SWISS STEAK

DECKER'S QUALITY

DECKER'S ALL MEAT

DECKER'S FULLY COOKED

DECKERS OLIVE, PICKLE, BOLOGNA, SALAMI, SPICED LUNCHEON, MIX OR MATCH

CUT FROM LARGE FRESHWATER CATFISH

FRESH GROUND

SKAGGS ALBERTSONS HALFMOON

ROUND BONE ARM

1 LB. PKG. 79¢

12 OZ. PKG. 58¢

3 TO 5 LB. AVG. \$1.19

6 OZ. PKG. 3 FOR \$1

LB. 89¢

3-LB. PKG. OR MORE 68¢

10 OZ. 67¢

LB. 88¢

CHIFFON PRINTED PAPER

**TOWELS**

JUMBO ROLL

**25¢**

LIQUID DETERGENT

**DOVE**

KING SIZE 32 OZ.

**49¢**

JANET LEE - GREEN

**BEANS**

CUT OR FRENCH SLICED 303 CANS

**5¢**

MCCORMICK BLACK

**PEPPER**

4 OZ. TIN

**39¢**

TEXIZE FLUFF FABRIC

**SOFTENER**

64 OZ.

**48¢**

DELICATESSEN-SNACK BAR

BAKED HAM

BOLOGNA

CHEESE

PASTRAMI

YOUR CHOICE OF:

LEAN & TENDER

DECKER'S ALL MEAT

DECKER'S FULLY COOKED

VIENNA

NOT PASTRAMI OR SANDWICHES

1 LB. 75¢

1 LB. 55¢

1 LB. 69¢

1 LB. 75¢

1 LB. 69¢

ALBERTSON'S

**SHORTENING**

3 LB. CAN

**68¢**

CORN

ALUMINUM FOIL

WHIP TOPPING

JANET LEE - CREAM STYLE OR WHOLE KERNEL GOLDEN

ALBERTSONS

ALBERTSONS

ALBERTSONS

ALBERTSONS

5 FOR \$1.00

25 FOOT ROLL 25¢

3 FOR \$1.00

**FRESH PRODUCE SPECIALS**

**CALIFORNIA TOMATOES**

**VINERIPE BEEFSTEAK**

**29¢**

**KEEBLER GRAHAM CRACKERS** 16 OZ. PKG. **39¢**

**FROZEN FOOD**

**BANQUET CREAM PIES** 6 FLAVORS TO CHOOSE FROM 14 OZ. PKG. **22¢**

**FLAV-R-PAC ORANGE JUICE** 6 OZ. TINS **\$1.00**

**JOHN'S PIZZAS** 15 OZ. SAUSAGE, CHEESE, PEPPERONI OR HAMBURGER **68¢**

**CARROT CAKES**

**8" 2 LAYER LARGE SIZE EACH \$1.69**

MADE FRESH IN OUR BAKERIES

**BAKERY**

SKAGGS ALBERTSONS ASSORTED BOXED

**COOKIES** 4 DOZ. **\$1.00**

DECORATIVE CAKES WITH THAT PERSONAL TOUCH

- WEDDING CAKES
- BIRTHDAY CAKES
- ALL OCCASIONS

**SKAGGS ALBERTSONS DRUGS & FOODS**

**UNIVERSITY DR. AT COLLEGE AVE.**

**HOURS**  
MON. - THU. 9 A.M. - 9 P.M.  
FRI. & SAT. 9 A.M. - 7 P.M.  
SUNDAY 10 A.M. - 7 P.M.

**LIQUID CLEANSER AJAX** 28 OZ. BOTTLE **48¢**

**AXAJ DETERGENT** GIANT BOX **58¢**