

FOR
BEST
RESULTS
TRY
BATTALION CLASSIFIED

**ALLEN
Oldsmobile
Cadillac**

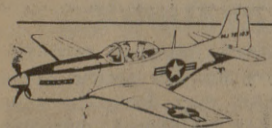
SALES - SERVICE
"Where satisfaction is
standard equipment"
2401 Texas Ave.
823-8002

Ponderosa Restaurant
S. Highway 6
College Station

AFTER CHURCH
BUFFET
EVERY SUNDAY

14 Salads, 3 Meats, 3 Vegetables
and Coffee or Tea.
\$1.95

**TEXAS A&M
AEROCLUB**



If you want to fly for fun
or business we can start
you off. And you can also
be a member of a Flying
Club. Call 846-2288.

**St. Thomas Episcopal Chapel and
Student Center**

906 Jersey Street
(southern boundary of campus)
Telephone: 846-1726

Summer Schedule:
Sunday, 8 and 9:30 a. m. and 8:00 p. m.
The Rev. James Moore, Chaplain. The Rev. W. R. Oxley, Rector

MEMORIAL STUDENT CENTER

Copy It! 5¢ A COPY
at our new quick-action copy center.

- | | |
|--------------------------------|------------------------------|
| Important Correspondence | Inventory Sheets |
| Accounting Records | Order & Bid Forms |
| Invoices & Statements | Catalog Sheets & Bulletins |
| Project/Product Specifications | Promotional Letters & Flyers |

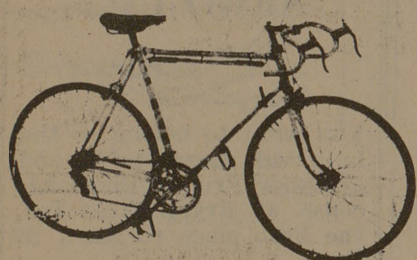
Try This Convenient New Service Soon!

PICK UP THE METER KEY AT THE MAIN
DESK IN THE LOBBY OF THE M.S.C.

easy-to-use XEROX® equipment!

IMPORTED 3 & 10 SPEED BIKES

Sales - Service - Accessories



Gitane
10-SPEED TANDEM
Now In Stock

CENTRAL SUPPLY

715 S. Main Bryan Closed Mon.
822-2228

**PIZZA INN
Smorgasbord**

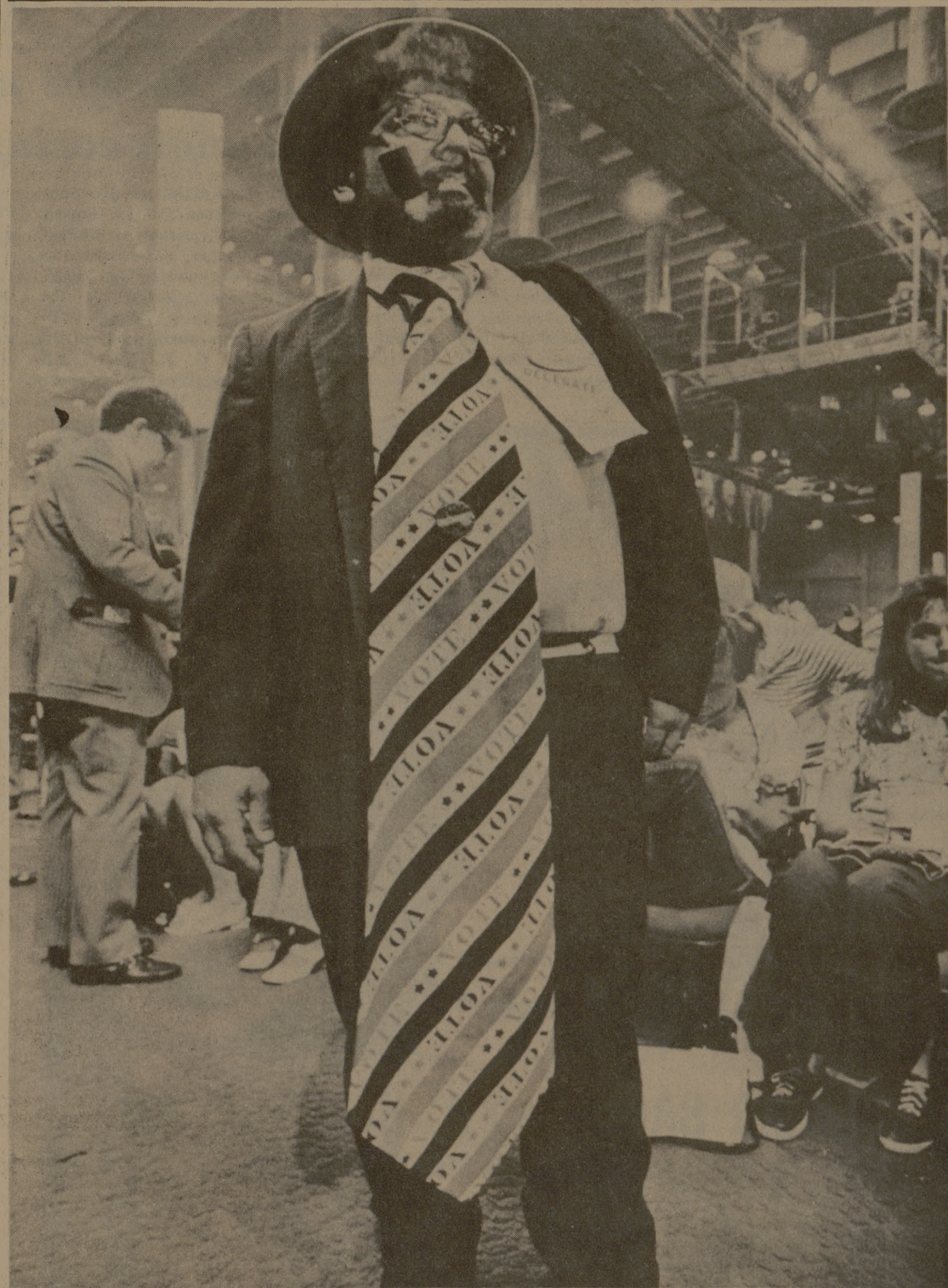
413 Texas Ave.
Monday thru Friday
11:00 a. m. - 2:00 p. m.

\$1.29

For all the Pizza & Salad you can eat.

Regular Hours:

11 a. m. - 12 p. m. Monday thru Thursday
11 a. m. - 1 p. m. Friday & Saturday
5 p. m. - 12 p. m. Sunday



Program change

The Great Issues Committee is
planning a change in its pro-
gramming.

All present and former mem-
bers, faculty advisers, and all
interested students and faculty
are urged to give their opinions.
A meeting will be held Thurs-
day in the Social Room of the
Memorial Student Center at 7:30
p.m.

LAKEVIEW CLUB

3 Miles N. On Tabor Road

Saturday night: Johnny Lyons — Janet Lynn and
The Nu-Notes

From 9 - 1 p. m.

STAMPEDE Every Thursday Nite
(ALL BRANDS BEER 35¢)

AT NORTH GATE
OPEN FROM 11 A. M. TO 7:30 P. M.

STARTS WED. - FR.
LASTS 3 DAYS

\$2.89

\$2.89

**BUDGET
TAPES & RECORDS**

New Santa Anna
&
Buddy Miles Live

LEON RUSSELL
"Carney"

Constant Everyday
Prices — All Labels
TAPES \$4.99
Reg. 6.98 8-track

Constant Everyday
Prices — All Labels
ALBUMS \$3.99
Reg. 5.98

8-TRACK TAPES
REG. \$6.98 — ONLY \$4.99

ALBUMS
REG. \$5.98 — ONLY \$3.99

Just In
New Chicago

315 UNIVERSITY 846-5518

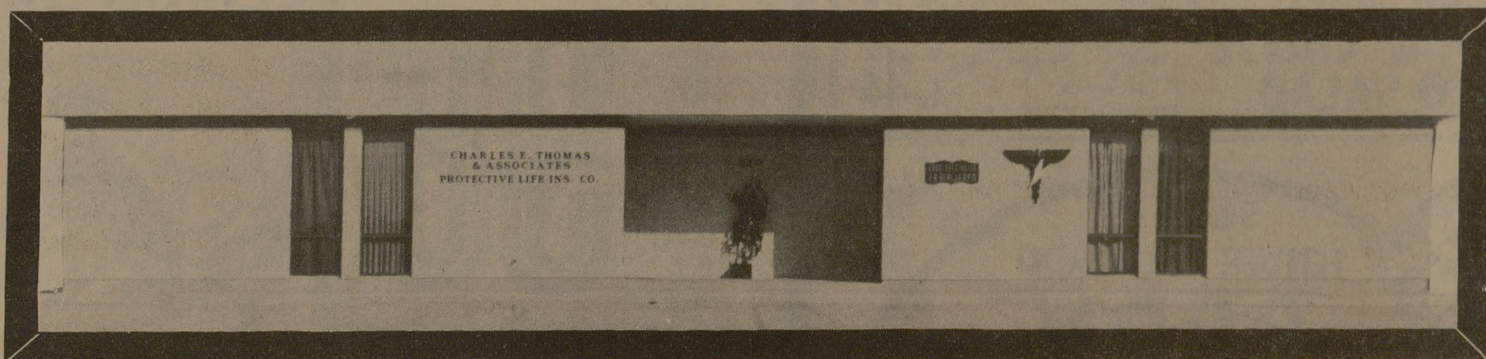
(across from Texas A + M) At North Gate (NEW STOCK JUST IN)

MAKING HIS POINT at the second session of the Demo-
cratic National Convention in Miami Beach, Florida, last
week is Sy Cohen of New Windsor, New York, who was a
delegate to the convention. (AP Wirephoto)

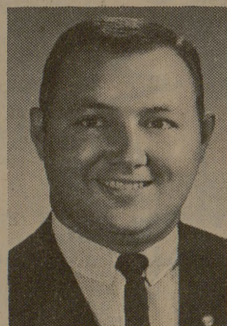
Rodeo Saturday night in Bryan

The first of a series of one-
night rodeos will be held at 8 p.m.
Saturday at the Bryan Rodeo
Arena, announced Jimmy Nuche,
rodeo director. Participants may register by
calling 396-2978 in Normangee
between 4 and 7 p.m. Friday.

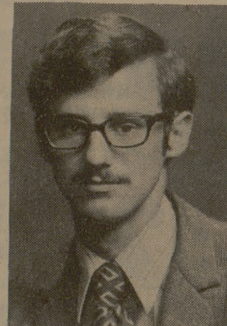
**We're Proud of Our
New Facilities**



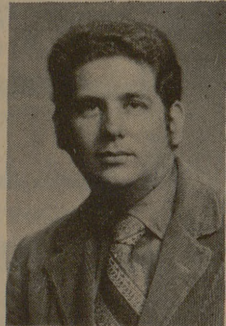
520 East University Drive



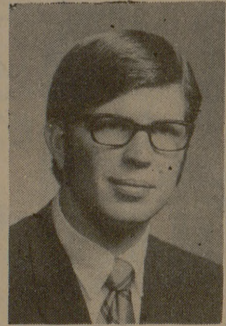
Charles Thomas
Agency Manager



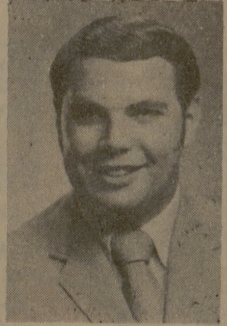
Phil Bielamowicz



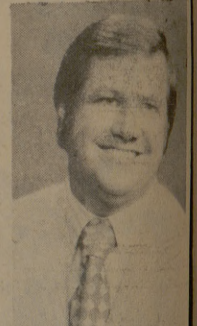
Bill Huber



James Kidwell



H. E. Pflughaupt



Glenn Thomas

**PROTECTIVE LIFE
Insurance COMPANY**

Home Office — Birmingham, Alabama

846-7714



Home Office
Birmingham, Alabama
"Building for Security Since 1907"



**PROTECTIVE LIFE
INSURANCE COMPANY**
Local Office
520 East University
(2 blocks East of Ramada Inn)