

# J. H. Quisenberry resigns as head of Poultry Science

Dr. J. H. Quisenberry, one of the best known figures in the poultry research world, retired Friday as head of the A&M Poultry Science Department.

It's a position he has held for 26 of the 36 years of association with A&M.

The scientist will remain with the Poultry Science Department until Aug. 31, when he will officially go into full retirement. However, he plans to continue to

work with graduate students, conduct research, do consulting work with the domestic and foreign poultry industry, and "travel a little."

Dr. H. O. Kunkel, dean of the A&M College of Agriculture, lauded Quisenberry's years of service and accomplishments.

"Through Dr. Quisenberry's leadership, Texas A&M has received broad exposure and become a leader in poultry research in

the United States and the world," Kunkel said. "He is a dedicated researcher and teacher. We are fortunate that he will remain associated with the university, even in retirement."

The Texas Poultry Federation and many friends will sponsor a retirement dinner for the professor at 7:30 p.m. Thursday at the Ramada Inn in College Station. A social hour at 6:30 p.m. will precede the dinner.

Quisenberry is most widely recognized among fellow poultry researchers in the United States and other countries for his work on laying hen management and nutrition. One of his favorite projects has been phase feeding, or changing the diet according to layer age and production stage. Another has been the relation of body size to feed efficiency of commercial layers.

The researcher and teacher has

had many career high points, but he says he values most those years with his students, American and foreign. And then there were the times he spent as technical advisor for poultry development work in such countries as Brazil, Ceylon, Bangladesh, Mexico and the Dominican Republic.

Quisenberry was born in Cook County, Texas, in 1907, but grew up in Hardeman County. He received a BS degree (with honors)

from A&M in 1931, a master's degree in animal genetics in 1933, and his doctoral degree in genetics and nutrition in 1936, both from the University of Illinois.

He came to A&M in 1936 as an associate professor of genetics, followed by appointment as associate professor of animal husbandry in 1944. Then came a year as head of the University of Hawaii Poultry Science Department before returning to head the Poultry Science Department in 1946.

Quisenberry has received honors through the years, them being an honorary member of the Texas Poultry Management Association, life member of the American Poultry Society, and the Golden Award of the Texas Poultry Association.

WE GIVE GREEN STAMPS

WE GIVE GREEN STAMPS

WE GIVE GREEN STAMPS

WE GIVE GREEN STAMPS

WE GIVE GREEN STAMPS

WE GIVE GREEN STAMPS

WE GIVE GREEN STAMPS

WE GIVE GREEN STAMPS

WE GIVE GREEN STAMPS

WE GIVE GREEN STAMPS

WE GIVE GREEN STAMPS

WE GIVE GREEN STAMPS

WE GIVE GREEN STAMPS

WE GIVE GREEN STAMPS

WE GIVE GREEN STAMPS

SPECIAL COUPON VALUE

**50 FREE**

12-oz. pkg. **SUPER TASTE FRANKS**

EXPIRES 7/8/72

LIMIT ONE COUPON PER FAMILY

SPECIAL COUPON VALUE

**50 FREE**

1 lb. pkg. **SUPER TASTE SLICED BACON**

EXPIRES 7/8/72

LIMIT ONE COUPON PER FAMILY

SPECIAL COUPON VALUE

**50 FREE**

cut up **FRYING CHICKEN**

EXPIRES 7/8/72

LIMIT ONE COUPON PER FAMILY

**IMPERIAL PURE CANE SUGAR**

EXTRA FINE granulated

**IMPERIAL CANE SUGAR** 5 Lb. Bag **39¢**

Limit 1 please with \$5.00 or more purchase. Exc. Cig. & Beer

SPECIAL COUPON VALUE

**50 FREE**

3 Lbs. or More **FRESH PEACHES**

EXPIRES 7/8/72

LIMIT ONE COUPON PER FAMILY

SPECIAL COUPON VALUE

**50 FREE**

1 lb. pkg. **KRAFT JET PUFF MARSHMALLOWS**

EXPIRES 7/8/72

LIMIT ONE COUPON PER FAMILY

SPECIAL COUPON VALUE

**50 FREE**

any **MRS. SMITH'S FROZEN PIES**

EXPIRES 7/8/72

LIMIT ONE COUPON PER FAMILY

**GOLD MEDAL ENRICHED FLOUR** 5 Lb. BAG **49¢**

Limit 1 please with \$2.00 or more purchase. Exc. Cig. & Beer

SPECIAL COUPON VALUE

**50 FREE**

pkg. **PILLSBURY CAKE MIX**

EXPIRES 7/8/72

LIMIT ONE COUPON PER FAMILY

SPECIAL COUPON VALUE

**50 FREE**

8-oz. jar **KRAFT CHEESE-WHIZ**

EXPIRES 7/8/72

LIMIT ONE COUPON PER FAMILY

SPECIAL COUPON VALUE

**50 FREE**

any **SARA LEE FROZEN CAKE or ROLLS**

EXPIRES 7/8/72

LIMIT ONE COUPON PER FAMILY

TOP QUALITY PRODUCE, RUSHED TO YOU DAYS FRESHER.

**TOMATOES** HOME GROWN **19¢** Lb.

**BANANAS** CENTRAL AMERICAN **29¢** Lbs.

SPECIAL COUPON VALUE

**100 FREE**

Any 3 Lbs. or More **GROUND BEEF**

EXPIRES 7/8/72

LIMIT ONE COUPON PER FAMILY

SPECIAL COUPON VALUE

**50 FREE**

Any 10 Lb. Bag **POTATOES**

EXPIRES 7/8/72

LIMIT ONE COUPON PER FAMILY

SPECIAL COUPON VALUE

**100 FREE**

20¢/30 gal. **GLAD TRASH BAGS**

EXPIRES 7/8/72

LIMIT ONE COUPON PER FAMILY

Calif. Red Meat **PLUMS** Lb. **29¢**

Calif. Flat Sweet **RED ONIONS** Lb. **19¢**

Kentucky Wonder **GREEN BEANS** Lb. **29¢**

CALIFORNIA RED **NEW POTATOES** 2 Lbs. **25¢**

Calif. Lettuce **ROMAINE** Head **25¢**

Florida Persian **LIMES** 6 For **39¢**

Cello **RADISHES** 2 6-oz. Pkgs. **25¢**

Green **ONIONS** 2 Bu. **25¢**

SPECIAL COUPON VALUE

**50 FREE**

2 16-oz. cans **PIGGLY WIGGLY PEAR HALVES**

EXPIRES 7/8/72

LIMIT ONE COUPON PER FAMILY

SPECIAL COUPON VALUE

**50 FREE**

50¢ size **BAYER ASPIRIN**

EXPIRES 7/8/72

LIMIT ONE COUPON PER FAMILY

SPECIAL COUPON VALUE

**50 FREE**

15 ct. pkg. **ROYAL CHINET COMP. PLATES**

EXPIRES 7/8/72

LIMIT ONE COUPON PER FAMILY

FROZEN FOOD SPECIALS

Sara Lee Blueberry **COFFEE RING** 10-oz. Pkg. **75¢**

Pet Whipped **TOPPING** 10-oz. Size **39¢**

Banquet Assorted **CREAM PIES** 4 14-oz. Pkgs. **1**

ZEE **BATHROOM TISSUE**

2 Roll Pkgs. **10**

650 Ct. Rolls **1**

SPECIAL COUPON VALUE

**50 FREE**

10 ct. pak **S.O.S. SOAP PADS**

EXPIRES 7/8/72

LIMIT ONE COUPON PER FAMILY

SPECIAL COUPON VALUE

**50 FREE**

can **GLADE AIR FRESHENER**

EXPIRES 7/8/72

LIMIT ONE COUPON PER FAMILY

SPECIAL COUPON VALUE

**50 FREE**

4-oz. can **FRENCH'S GROUND BLACK PEPPER**

EXPIRES 7/8/72

LIMIT ONE COUPON PER FAMILY

Zee Paper **TOWELS** 3 Gnt. 170 Ct. Rolls **1**

Green Giant **SWEET PEAS** 4 17-oz. Cans **89¢**

Green Giant **NIBLETS CORN** 4 12-oz. Cans **89¢**

Estwell Grated **TUNA** 3 6 1/2-oz. Cans **1**

SNO-CLUB **MELLORINE**

3 1/2 Gal. Cms. **1**

SPECIAL COUPON VALUE

**50 FREE**

2 lb. bag **3 MINUTE POP CORN**

EXPIRES 7/8/72

LIMIT ONE COUPON PER FAMILY

SPECIAL COUPON VALUE

**50 FREE**

any **A 1 SAUCE**

EXPIRES 7/8/72

LIMIT ONE COUPON PER FAMILY

SPECIAL COUPON VALUE

**50 FREE**

2 16-oz. cans **PIGGLY WIGGLY WHOLE TOMATOES**

EXPIRES 7/8/72

LIMIT ONE COUPON PER FAMILY

Bonnie Baker **PEANUT BUTTER** 18-oz. Jar **59¢**

Pine-O-Pine **PINE OIL** 8-oz. Btl. **45¢**

Nabisco Crackers **RITZ** 16-oz. Jar **49¢**

**Pepsi Cola**

16 OZ. BOTTLES **49¢**

6 PACK Plus Deposit

**1,200 Free S&H Green Stamp Bonanza**

CLIP OUT AND REDEEM THESE VALUABLE COUPONS AND THEY WILL COMPLETELY FILL ONE S&H GREEN STAMP BOOK

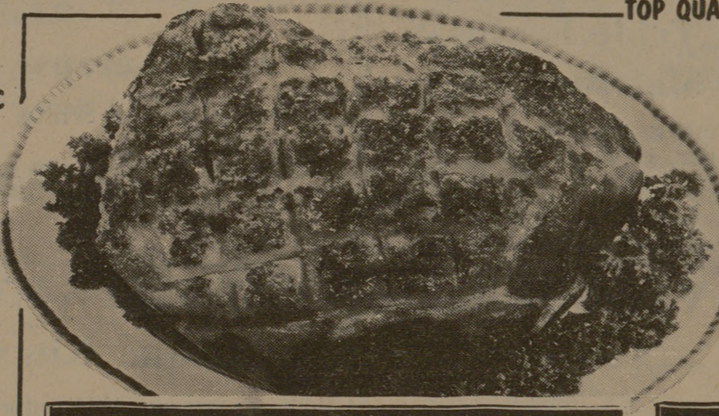
FRESH BREAD **BONNIE BAKER** 4 1/2 Lb. Loaves **\$1**

LOW FAT MILK **BONNIE BAKER** Gal. Ctn. **99¢**



THIS WEEK'S CASH JACKPOT WINNER **HATTIE S. KING** 3709 S. COLLEGE

**CASH JACKPOT** NOW WORTH **\$300**



**SMOKED PICNICS** DECKER'S QUALITY **39¢** Lb.

Decker's Quality Smoked Whole **SLICED PICNICS** Lb. **45¢**

Decker's Quality Smoked Half **SLICED PICNICS** Lb. **49¢**

Decker's Quality Smoked **CENTER SLICE PICNIC** Lb. **59¢**

TOP QUALITY MEAT, IS A SPECIALTY WITH US.

Swift Premium Proten Heavy Beef **RANCH STYLE STEAK** Lb. **89¢**

Swift Premium Proten Heavy Beef **SWISS STEAK** shoulder cut Lb. **99¢**

Swift Premium Proten Heavy Beef **CHOPPED SIRLOIN** Lb. **99¢**

Swift Premium Proten Heavy Beef **CHAR. BROIL STEAK** boneless Lb. **1.09**

Swift Premium Proten Heavy Beef **SAVOY BROIL STEAK** boneless Lb. **1.09**

Swift Premium Proten Heavy Beef **BOSTON ROLL ROAST** boneless Lb. **99¢**

**BAKING HENS** SUPER TASTE 4 to 6 lb. avg. **49¢** Lb.

Comish **GAME HENS** 16-oz. Each **59¢**

Super Taste **SLICED BACON** Lb. **89¢**

Super Taste **FRANKS** 12-oz. Pkg. **59¢**

Swift Premium **CANNED HAM**

5 lbs. **\$4.95**

3 lbs. **\$2.99**

Swift's Premium **PROTEN BEEF**

**PIGGLY WIGGLY** The Original SELF SERVICE

NOW! THREE GREAT STORES TO SERVE YOU BETTER

4300 TEXAS AVE. 3516 TEXAS AVE. 200 E. 24th ST.

**COLLEGE STATION AND BRYAN, TEXAS**

\*QUANTITY RIGHTS RESERVED

THESE PRICES EFFECTIVE THURS. FRI. & SAT. JULY 6, 7 & 8 1972

WE GIVE GREEN STAMPS

WE GIVE GREEN STAMPS

WE GIVE GREEN STAMPS

WE GIVE GREEN STAMPS

WE GIVE GREEN STAMPS

WE GIVE GREEN STAMPS

WE GIVE GREEN STAMPS

WE GIVE GREEN STAMPS

WE GIVE GREEN STAMPS

WE GIVE GREEN STAMPS

WE GIVE GREEN STAMPS

WE GIVE GREEN STAMPS

WE GIVE GREEN STAMPS

WE GIVE GREEN STAMPS

WE GIVE GREEN STAMPS