

Jeff Overhouse

Overhouse ranks as one of A&M's greatest

With more than half of his collegiate career still ahead of him, A&M's Jeff Overhouse is well on his way to becoming one of the all-time Aggie greats.

"Jeff may be the most complete player we've ever had," Coach Shelby Metcalf says of the 6-7 junior from League City Clear Creek. "By the time he's through, he could be the best ever."

Through eleven games this sea-

son, Overhouse is leading the team in scoring with 18.7 points per game and in rebounding with a 10.5 norm. He has made a clean sweep of all-tournament honors, being named to the all-star teams in the Lobo Invitational, Astro-Bluebonnet and the Presidential Classic. Overhouse was voted the Most Valuable Player in the Presidential, which the Aggies won by beating Virginia Tech 66-62 in overtime.

The title game in the Washington tournament provides an excellent example of what Metcalf means when he calls Overhouse a "complete" player. In addition to his 17 points and 17 rebounds, Overhouse held Allen Bristow, the nation's No. 7 scorer, without a field goal in the second half and the overtime period. Overhouse demonstrated his great courage in the Bluebonnet tourney when he played all 40

minutes on a severely jammed knee, yet scored 30 points and grabbed 16 rebounds in a 73-68 victory over LSU.

His performance this year has been no surprise. Last year Overhouse was voted Sophomore of the Year in the Southwest Conference and led a senior-dominated team in scoring and rebounding in league play. He scored more points than any A&M sophomore except Carroll

Broussard, and that includes such Aggie greats as John Beasley and Bennie Lenox. Jeff was named to win the All-SWC team and voted Most Valuable Player by his teammates.

In addition to his other talents, Overhouse is tough from the free throw line. He hit 15 of 16 attempts in the Presidential Classic and is hitting at a .718 clip for the season.



WE GIVE GREEN STAMPS



the friendliest stores in town

JAX BEER

6 CAN CTN. **99c**

THESE PRICES GOOD THURS-FRI. & SAT. JANUARY 13, 14 & 15 1972

EVERYDAY LOW PRICES

LOG CABIN SYRUP	12-oz. Btl.	37c
HERSHEY'S COCOA	8-oz. Box	38c
FRENCH'S MUSTARD	6-oz. Jar	14c
LIPSON'S TEA	1/4-Lb. Pkg.	41c
SOFT PLY PAPER TOWELS	3 Gnt. 175-Ct. Roll	\$1
ALL SWEET MARGARINE	Lb. in Qtz.	31c
PIGGLY WIGGLY FRUIT COCKTAIL	303 Can	27c
WELCH'S GRAPEJUICE	24-oz. Size	45c
BABY FORMULA SIMILAC LIQUID	13-oz. Can	31c
SONNIE BAKER SALT	2 26-oz. Box	19
SHAKER OATS	Large 42-oz. Box	63c



THIS COUPON WORTH 20c on PURCHASE OF Lb. Can MAXWELL HOUSE COFFEE without coupon **89c** with coupon **69c**

EXPIRES: 1/15/72

THIS IS IN ADDITION TO YOUR REGULARLY EARNED SAVING STAMPS

LIMIT ONE CHILDREN'S USE PLEASE

MAXWELL HOUSE COFFEE **Lb. Can 69c**



HUNT'S ASSORTED SKILLET DINNERS 12.3 to 17.12-oz. Pkg. **79c**

AIR FRESHENER WIZARD 9-oz. Can **39c**

HEINZ KETCHUP 32-oz. Btl. **49c**

AUNT JEMIMA CORN MEAL 5 Lb. Bag **49c**

COKES
SPRITE, FRESCA, TAB

3 6 BTL. CTNS. \$1

Limit 3 With \$5.00 Purchase or More, Excluding Cig. & Beer.

FROZEN FOOD DEPT. TENNESSEE BRUSSEL SPROUTS 8-oz. Pkg. **25c**

TENNESSEE STEW VEGETABLES 20-oz. Pkg. **43c**

HEALTH AND BEAUTY AIDS TOOTH PASTE Mc Clean's Gnt. 4-oz. Tube List 44c 69c

VASELINE Blue Seal 3 3/4-oz. Jar List 33c 45c

HAIR TONIC Vaseline 3 1/2-oz. Btl. List 69c 98c

GRAPEFRUIT Texas US #1 Ruby Red lb **12c**

BELL PEPPER US #1 3 For **29c**

CELLO CARROTS US #1 2 Lb. Bags **39c**

GREEN ONIONS US #1 bun **12c**

ORANGES TEXAS VALENCIA lb **12c**

CELLO RADISHES ea **12c**

YAMS Lb. **23c**

YELLOW ONIONS US #1 2 Lb. **25c**

BONNIE BAKER BREAD 4 1 1/2 LB. LOAVES **\$1.**

BAMA GRAPE JELLY 3 18-oz. Jars **\$1**

LIQUID DIET SEGO 4 10-oz. Cans **89c**

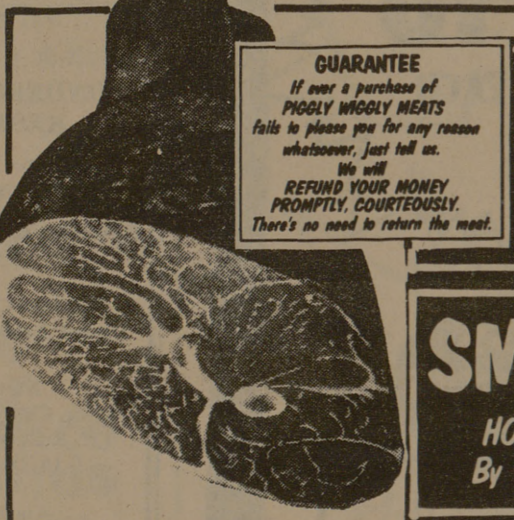
CREAM PIES BANQUET FROZEN 4 14-oz. Pkgs. **\$1**

ORANGE JUICE SEALD SWEET FROZEN 6 6-oz. Cans **\$1**

PIGGLY WIGGLY **PEACHES** 3 2 1/2 CANS **89c**

GREEN BEANS PIGGLY WIGGLY CUT 5 303 17-oz. Cans **\$1**

PIGGLY WIGGLY MEAT DEPT. SPECIALS



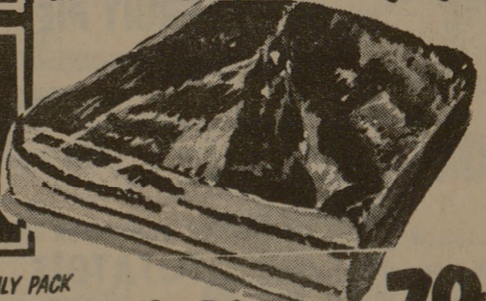
SHANK PORTION HAMS DECKER'S QUALITY Lb. **45c**

SMOKED SLAB BACON HORMEL By the Piece Lb. **49c**

DECKER'S BUTT PORTION HAM Lb. **53c**

DECKER'S CENTER ROAST HAM Lb. **89c**

DECKER'S CENTER SLICE HAM Lb. **99c**



LEAN & MEATY SPARERIBS Lb. **49c**

BOSTON BUTT SEMI-BONELESS PORK ROAST Lb. **55c**

LEAN & TENDER PORK STEAKS Lb. **59c**

OWEN'S REGULAR OR HOT SAUSAGE 2 Lb. **1 39c**

RATH-6-OZ. PKG. All Meat Bologna Pickle & Peanuts Liver Cheese Lb. **39c**

RATH LINK SAUSAGE 8-OZ. PKG. **39c**

FAMILY PACK PORK CHOPS Lb. **79c**

FAMILY PACK FRYERS Contains: 2 Roast Cuts 2 Leg Qtz. 2 Wings Plus Giblets Lb. **29c**

RATH SLICED BACON LB. **79c**

DOUBLE S&H GREEN STAMPS EVERY TUES WITH \$2.50 OR MORE PURCHASE



NOW! THREE GREAT STORES TO SERVE YOU BETTER

4300 TEXAS AVE.

3516 TEXAS AVE.

200 E. 24th ST.

BRYAN & COLLEGE STATION, TEXAS

*QUANTITY RIGHTS RESERVED

WE GIVE GREEN STAMPS