

Ags and Mustangs continue usual competitive rivalry

With upsets in mind last week, the Texas Aggies and the SMU Mustangs square off tomorrow afternoon in Kyle Field in a game that has definite bearing on the outcome of the conference race.

The opposing coaches, Gene Stallings and Hayden Fry, are the only two in the Southwest Conference to have broken the Arkansas-Texas domination of the league crown in the past few years.

The series between the two schools has been an exciting one in recent seasons, and this contest promises to be just as interesting.

In 1966, SMU was the conference champ, and they downed the Aggies 21-14 in the Cotton Bowl

on the way to that title. The following season, the two teams met in a televised game at the beginning of the campaign, with the Mustangs slipping by, 20-17. It was A&M's only conference loss, as they went on to win it all.

Dallas was the site again in 1968, with Edd Hargett's passing producing 23 points, but Mike Richardson's running got SMU 36. Kyle Field saw the Aggies rise to the occasion in 1969, shutting down a dangerous Mustang passing attack 20-10.

Last year, it was a last-second field goal that gave SMU a 6-3 win. Gary Hammond's excellent performance at tailback failed to produce a touchdown, and Joe Mac King came off the bench to

spark a drive that was stopped short.

The two are back this season, both as starting quarterbacks of teams that started off slowly, but are coming into their own now. A&M is fresh from its 17-9 upset of Arkansas, while SMU was nipped in the fourth quarter by Texas, 22-18.

In the backfield with King will be fullback Doug Neill and tailback Mark Green. Neill leads the team in rushing, and Green is just beginning to stand out at running back. He scored two touchdowns against the Razorbacks, gaining 102 yards in 27 carries.

Marc Black will substitute for Neill, and Hugh McElroy, the

flashy return specialist, plays behind Green. Clifford Thomas, injured early in the season, is practicing and may see limited action tomorrow.

Receivers are tight end Homer May, split end Robert Murski and wingback Joey Herr. May has a hurt wrist, and Herr reinjured his shoulder, so Mitch Robertson, the Aggie punter, and Ricky Spencer should get to play also. Billy Jo Polasek fits into the picture as the number two split end.

The offensive line, which did a superb job against the Hogs, will have its hands full with the Mustangs. Ready to face the challenge are tackles Ralph Sacra and Buster Callaway, guards Leonard Forey and Todd Christo-

pher and center Skip Kuehn.

Depending on the physical condition of Robert Gerasimowicz, who plays center and guard, Kuehn may play tackle, and Ted Smith will fill in at both spots. Mike Park will log considerable time replacing both guards.

Defensively, the Aggies will be challenged by the running of Hammond and the SMU offense. Having held Arkansas to 50 yards rushing, the unit has another tough test this week.

At the ends will be Max Bird and Mike Lord, but Kent Finley plays a lot on passing situations, when Lord becomes a third linebacker for added coverage. Van Odom and Boice Best start at the tackles, one of the brightest po-

sitions on a shining defensive crew. James Duback is the backup man on both sides. Middle guard Bill Wiebold is spelled by Mike Bruton.

Linebackers Grady Hoermann and Steve Luebbehusen have had outstanding games all season, and the pair has been the key to the low rushing totals opponents have compiled. Dennis Carruth is a substitute here.

The secondary, responsible for the winning turnovers against Arkansas, is ready to go again, with Bland Smith and Lee Hitt lining up at the corners and David Hoot and Brad Dusek at the safeties. Ed Ebrum and Larry

Ellis also play cornerback, and Mike Bellar fills in at either safety, in addition to kicking off for the Aggies.

Pat McDermott, tied for the A&M scoring lead with Green, has 18 points this year. He and Roberto Payan will be on hand for field goal and extra point duty.

A crowd of a little over 30,000 is expected for the game. A&M sports publicist Spec Gammon announced yesterday that SMU has returned a number of 20-30 year line tickets. He reminded students of high school age and below that "knot hole" tickets will be on sale Saturday for \$1.

Five teams still in race for SWC championship

By BILL HENRY
Assistant Sports Editor

For the first time since 1967, the Southwest Conference football championship will involve a real race. Only Rice, Baylor and Texas Tech have no mathematical chance at this year's title. Arkansas is still the odds on favorite but after last week's upset to A&M, the ground looks pretty shaky and if the Razorbacks lose again, it's all over for them.

Arkansas will try to return to the winner's circle when it travels to Houston to challenge the Rice Owls in an afternoon contest. A capacity of 72,000 fans are expected to swarm Rice Stadium hoping to see another also-ran pull off an upset of Arkansas. Arkansas, on the other hand, must stay up for the rest of its games in hopes of winning the conference, the first since 1965. Joe Ferguson cannot be blamed for the loss last weekend as he played almost flawlessly, throwing 51 times and completing 31 for 345 yards. Rice, like A&M, is billed as a tough defensive unit ranking high in the conference stats. The offense, however, is another story altogether. New head mentor Ray Peterson has installed a pro-style attack pat-

terned after his last coaching job at Florida State. The plan has not had the best of results, since a devastating triggerman is not included on the Owl squad. Arkansas is not expected to lose its composure and the likelihood of another upset is slim but so have the games in which the Razorbacks were pitted against Tulsa and A&M.

The Texas Longhorns try to keep their conference hopes alive when they host the Baylor Bears in renovated Memorial Stadium at 2 p.m. Baylor, as many of the Longhorn rooters remember, almost pulled off a super-upset of the Horns in Waco last season. The final score was 21-7 but the Bears had one touchdown called back, and the Steers took one across late in the final period. Texas aides feel top quarterback Eddie Phillips will be ready after a four week vacation due to a toe and hamstring injury. Donnie Wigginton has done an admirable job at the quarterback slot but many feel he is no Phillips. Even if Arkansas does not lose another game, Texas could find itself in a bowl game of some sort if no more losses are added to its final mark. Baylor has had its trouble this season with the lack of scor-

ing punch and a hot and cold defensive unit. If the defense is hot, as SMU's was last weekend, the Horns could be in for another long afternoon, as the Baylor offense is not much different than the Mustangs.

The most disappointing team in the SWC, Texas Tech, journeys to Amon Carter Stadium for a contest with the fired-up Horned Frogs of TCU in an afternoon affair. The death of Coach Jim Pittman has caused grief for the TCU players and family, with the void to be felt by all people involved in the game. The players have dedicated the remainder of the season to the late Pittman. A victory here and the following three games give the Frogs the longshot edge on title contention, having lost only one league encounter, that to Arkansas. Steve Judy, ace quarterback for the Frogs, played a superb game last Saturday night against Baylor to pull from behind twice and win the contest, 34-27. Judy, another hot and cold SWC performer, feels he has got his game together and is confident about the rest of the season. Tech has had its problems, though mostly offensive. The defense has lacked supporting power when in clutch po-

sitions, as they showed against SMU a few weeks ago. Charlie Napper, who was picked by some before the season as the best quarterback in the league, has not been able to lead the team. Joe Barnes and Jimmy Carmichael are great newcomers, but

experience is the name of the game in this part of the country. No one really knows what the problem is at Texas Tech, but for a team that received votes of confidence from writers around the league as the team to beat, things look somewhat flustered.

Undefeated teams lead all four classes

By THE ASSOCIATED PRESS

Port Arthur Jefferson, Silsbee, Eastland and Sonora held the leads once again over their divisions this week in The Associated Press schoolboy football poll.

Jefferson clutched the Class AAAA top spot with nine first place votes ahead of runnerup Wichita Falls. Dallas Carter moved to third and Arlington was fourth.

Port Arthur Lincoln moved up from seventh to fifth in time for its city showdown with Jefferson this weekend.

The biggest shocker last week was third ranked Galveston Ball's 21-10 loss to unranked Baytown Sterling.

Silsbee and Gregory-Portland remained 1-2 in Class AAA. Ennis, No. 6, dropped from the list after being tied 6-6 by Wilmer-Hutchins. Tidehaven entered the top 10 as No. 10 team in AAA.

Eastland retained its lead in Class AA and Sonora remained on top in Class A.

Ninth-ranked Woodsboro and 10th rated Diboll lost Class AA and dropped from the top 10.

Their replacements were No. 9 Austin Westlake and No. 10 Bowie.

In Class A, Forney tumbled from the top 10 after losing 12-10 to rugged Crowley, ranked No. 6 this week. Crowley has outscored the opposition 222-13 through eight straight victories this season.

Crowley whipped five straight Class AA foes and has not yielded more than two consecutive first downs all season. Forney scored the first touchdown of the season against Crowley last week. Crowley picked up two first place votes in this week's poll.

Here is The Associated Press schoolboy football poll with season records:

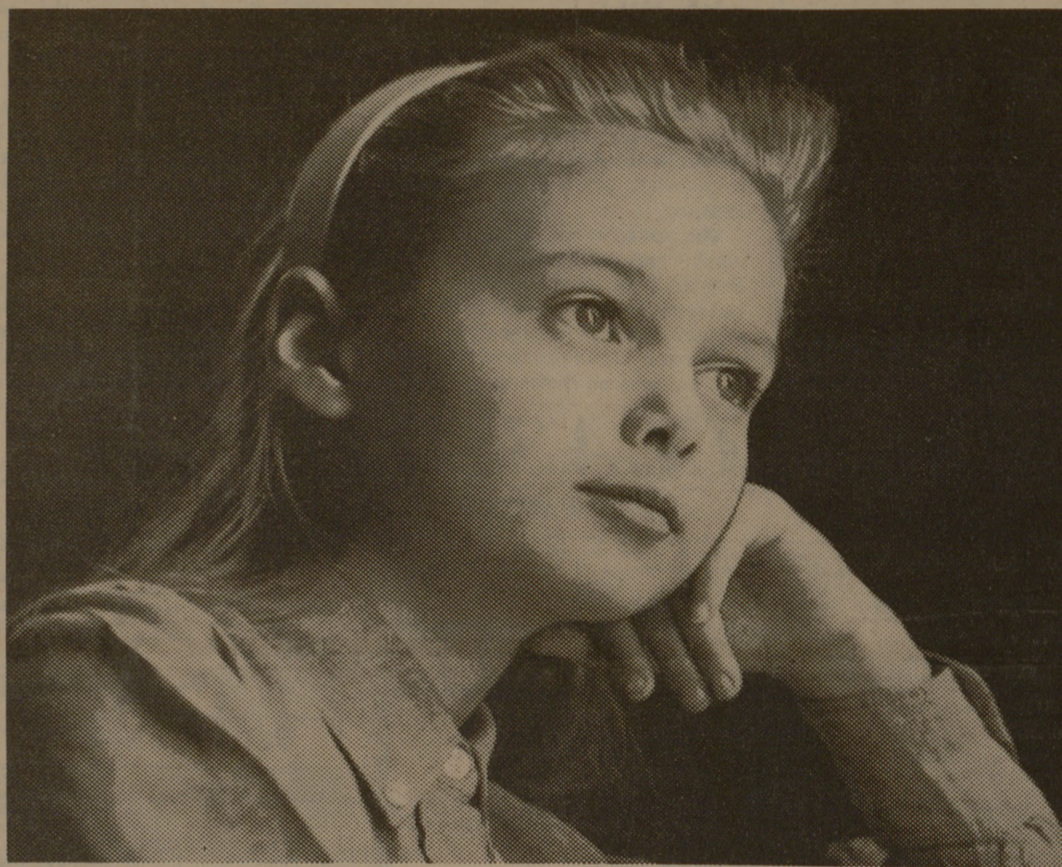
Class AAAA	
1. Port Arthur Jefferson	8-0
2. Wichita Falls	8-0
3. Dallas Carter	8-0
4. Arlington	8-0
5. Port Arthur Lincoln	8-0
6. Odessa Permian	8-1
7. Houston Westchester	8-0
8. Conroe	8-0
9. San Antonio Lee	7-0-1
10. Hurst Bell	7-1

Class AAA	
1. Silsbee	8-0
2. Gregory-Portland	7-0
3. Brownwood	5-2
4. Brenham	8-0
5. Cuero	7-0-1
6. Plano	6-1
7. Lubbock Estacado	6-0-1
8. Uvalde	8-0
9. Iowa Park	7-1
10. Robstown	7-0

Class AA	
1. Eastland	8-0
2. Refugio	6-1
3. Jacksboro	7-1
4. Klein	6-2
5. Kirbyville	8-0
6. Hondo	7-1
7. Tomball	7-1
8. Needville	8-0
9. Austin Westlake	7-0
10. Bowie	7-0-1

Class A	
1. Sonora	8-0
2. Holliday	8-0
3. White Deer	8-0
4. White Oak	8-0
5. Barbers Hill	8-0
6. Crowley	8-0
7. Albany	8-0
8. Farmersville	7-0-1
9. Mason	7-1
10. Tidehaven	6-2

The Church.. For a Fuller Life.. For You..



DREAMS ARE THE DAWN OF TOMORROW

And like the first light of a new day they seem distant, unreal. Yet out of our dreams we often fashion tomorrow.

The dreams of the daylight hours are not in the subconscious. Rather they project our hopes on a screen of reality. They grow into goals and aims and ambitions.

Whether tomorrow will fulfill those dreams depends on certain values which must be acquired today. Ideals, standards, moral principles, religious faith — these inspire dreams worth dreaming, and help us to translate them to reality.

Never worry about your daughter's daydreaming. Be concerned about her opportunities for spiritual development. The Church shares that concern. It can help you do something constructive about it.

Copyright 1971 Keister Advertising Service, Inc., Strasburg, Virginia. Scriptures selected by the American Bible Society.

Sunday	Monday	Tuesday	Wednesday	Thursday	Friday	Saturday
Mark 8, 1-9	Acts 27, 33-37	Romans 14, 5-9	Ephesians 5, 15-20	Psalms 26, 1-12	Psalms 50, 14-23	Isaiah 51, 1-3

CALENDAR OF CHURCH SERVICES

A&M METHODIST 9:45 A.M.—Sunday School 10:45 A.M.—Morning Worship 5:30 P.M.—Campus & Career Class 5:30 & 6:00 P.M.—MYF Meetings	CHURCH OF THE NAZARENE 9:45 A.M.—Sunday School 10:45 A.M.—Morning Worship 6:30 P.M.—Young People's Service 7:00 P.M.—Preaching Service	CHRISTIAN SCIENCE SOCIETY 9:30 A.M.—Sunday School 11:00 A.M.—Sunday Service 11:00 A.M.—Tues. Reading Rm. 7:00-8:00 P.M.—Wed., Reading Room 8:00 P.M.—Wed. Evening Worship	FIRST BAPTIST 9:30 A.M.—Sunday School 10:45 A.M.—Morning Worship 6:10 P.M.—Training Union 7:20 P.M.—Evening Worship 6:45 P.M.—Choir Practice & Teachers' meetings (Wednesdays) 7:45 P.M.—Midweek Services (Wed.)	SECOND BAPTIST 710 Eisenhower 9:45 A.M.—Sunday School 11:00 A.M.—Church Service 6:30 P.M.—Training Union 7:30 P.M.—Church Service	OUR SAVIOUR'S LUTHERAN 8:30 & 10:45 A.M.—The Church at Worship 9:30 A.M.—Bible Classes For All Holy Communion—1st Sun. Ea. Mo.	CENTRAL CHRISTIAN CHURCH 3205 Lakeview 9:45 A.M.—Bible School 10:45 A.M.—Morning Worship 6:00 P.M.—Youth Hour 7:00 P.M.—Evening Worship	ST. MARY'S CATHOLIC Sunday Mass—9, 11 A.M. & 7 P.M. (Folk Mass) Weekday Masses—5:15 P.M. Saturday Mass—7 P.M. Holy Day Masses—5:15 & 7 P.M. Confessions—Saturday 6-7 P.M.	A&M CHURCH OF CHRIST 8:00 & 10:00 A.M. Worship 9:00 A.M.—Bible Study 5:15 P.M.—Young People's Class 6:00 P.M.—Worship 7:15 P.M.—Aggie Class 9:30 A.M.—Tues., Ladies Bible Class 7:15 P.M.—Wednesday - Bible Study	COLLEGE HEIGHTS ASSEMBLY OF GOD 9:45 A.M.—Sunday School 11:00 A.M.—Morning Worship 6:30 P.M.—Young People's Service 7:30 P.M.—Evening Worship	ST. THOMAS' EPISCOPAL CHURCH Southside of Campus Rector, The Rev. Wm. R. Oxley Phone 846-6133 Sunday Services—8:00 A.M., 10:00 A.M., 6:00 P.M. Church School—10:00 A.M. Sundays Canterbury Group—11:15 A.M. and 6:00 P.M. Sundays	GRACE BAPTIST CHURCH 2505 S. College Ave., Bryan An Independent Bible Church 9:45 A.M.—Sunday School 10:50 A.M.—Morning Worship 7:00 P.M.—Prayer and Bible Study	SEVENTH-DAY ADVENTIST CHURCH North Coulter and Ertle, Bryan 9:30 A.M.—Sabbath School (Saturday) 11:00 A.M.—Worship Service 7:30 P.M.—Prayer Meeting (Tuesday)
-------------------------------------------------------------------------------------------------------------------------------------------------------	-----------------------------------------------------------------------------------------------------------------------------------------------------------	-------------------------------------------------------------------------------------------------------------------------------------------------------------------------------------------------	-------------------------------------------------------------------------------------------------------------------------------------------------------------------------------------------------------------------------------------------	---------------------------------------------------------------------------------------------------------------------------------------------------------	------------------------------------------------------------------------------------------------------------------------------------------------	---------------------------------------------------------------------------------------------------------------------------------------------------------------	-------------------------------------------------------------------------------------------------------------------------------------------------------------------------------------------------	---------------------------------------------------------------------------------------------------------------------------------------------------------------------------------------------------------------------------------------------------	------------------------------------------------------------------------------------------------------------------------------------------------------------------	------------------------------------------------------------------------------------------------------------------------------------------------------------------------------------------------------------------------------------------------------------	----------------------------------------------------------------------------------------------------------------------------------------------------------------------------------------	----------------------------------------------------------------------------------------------------------------------------------------------------------------------------------

Hillier Funeral Home
BRYAN, TEXAS
502 West 26th St.
PHONE TA 2-1572

Campus and Circle Theatres
College Station
College Station's Own Banking Service
University National Bank
NORTH GATE

Sure Sign of Flavor

ICE CREAM

SANITARY Farm Dairies
Central Texas Hardware Co.
BRYAN
• HARDWARE
• CHINAWARE
• CRYSTAL
• GIFTS

STUDENT PUBLICATION
The Exchange Store
"Serving Texas Aggies"

BB & L
BRYAN BUILDING & LOAN ASSOCIATION

NOTICE ALL ORGANIZATIONS

(Hometown Clubs, Professional Clubs, Etc.)

GROUP PICTURES ARE NOW BEING SCHEDULED FOR THE 1972 AGGIELAND AT THE STUDENT PUBLICATIONS OFFICE

Room 216
SERVICES BUILDING
Across from Chemistry Bldg.

Pictures will be taken on Monday and Thursday Nights.
Price — Full Page — \$55.00 ½ Page — \$30.00