



Lee Hitt

Lee Hitt finds his position at defensive right cornerback

By BILL HENRY

Lee Hitt, senior letterman from Fort Worth Arlington Heights, sure is a sly one. He leads the Aggies with three interceptions while only starting playing in two games.

"I attribute this to the opposing quarterbacks throwing the ball in my area because I'm kind of the rookie back there since I've been there for two games," Hitt said.

At the end of spring training, Hitt controlled the number one free safety spot. When he report-

ed back for his fifth year here at Texas A&M he found Brad Dusek's name on the number one free safety spot.

"My first reaction was really disbelief and frustration," Hitt said. "I figured it would be the same situation as I had the other years I was here at A&M, riding the bench. I confronted Coach Lance Van Zandt and told him I was going to play somewhere. Three weeks later I was first team right cornerback."

When Lee returns home to Fort

Worth to play TCU on October 17, it will be the first time to play in front of the hometown folks.

"I'm real excited about playing in Fort Worth," stated Hitt. "I've played against many of TCU's players in high school and it will be a big thrill to see everyone again."

Lee's first start was against national champ Nebraska. He had the awesome job of covering All-American halfback, Johnny Rogers. When the game ended, Lee

had an interception and an Aggie star for his defensive prowess.

"It's a big thrill to get a star," Lee commented. "It is sort of special recognition for a job well done, it really gives you confidence."

The toughest part of playing cornerback is trying to key on the quarterback and break for the ball on the option play.

"At cornerback, the option is the most difficult thing to learn to defend," Hitt said. "Your responsibility is getting the pitch

man while the defensive end gets the quarterback. This week's opponent, Tech, has a master of the option in Charlie Napper. He is real deceptive."

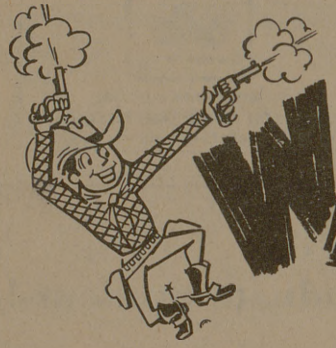
As a part of the Aggie defense one wonders what type of brotherhood it has with its members.

"We have great players on defense, that's all there is to it," he said. "We know the other members on the defense will do their jobs well and we don't every worry about the defense breaking down, I guess we got the biggest

boost in our confidence at Nebraska."

Each player has his own assets, but what does it take to play in the defensive backfield?

"Well, for me, I've always to hit people," Hitt said. "In our defensive backfield we have one thing in common — we are all ex-high school quarterbacks. I think this helps know what opposing quarterbacks are likely to do."



WESTERN

Round-Up

PRICES GOOD OCT. 7 - 8 - 9.



WHIPPED SNOWDRIFT SHORTENING
42 OZ. CAN **69¢**

LIMIT ONE PLEASE WITH \$5.00 PURCHASE. EXCLUDING CIGARETTES & BEER.

BONNIE BAKER BREAD

4 1/2-Lb. Loaves **\$1.00**

BONNIE BAKER Brown 'N Serve ROLLS

4 12 Ct. Pkg. **\$1.00**



SPRITE - FRISCA - TAB

COKES

3 6 Pk. Ctn. **\$1.00**

Limit 3 With \$5.00 Purchase Excluding Cigarettes & Beer.

Soft Ply **TOILET TISSUE**
4 Roll Pkg. **29¢**

HEALTH & BEAUTY AIDS
ALKA SELTZER 24's 59¢
Dial - Dry Spray DEODORANT 5-Oz. Can 89¢



VINE RIPE

Tomatoes... lb 29¢

SUPER TASTE **ALL MEAT FRANKS 12 oz. 39¢**

BONNIE BAKER BUTTERMILK
1/2 Gal. **45¢**

U. S. NO. 1 — COLORADO RUSSET

POTATOES
20 LB. BAG **99¢**



Seedless Grapes **Flame Tokay Grapes**
U. S. No. 1 Thompson 3 Lbs. 89¢ U. S. No. 1 3 Lbs. 89¢

COLORADO — EXTRA FANCY **DELICIOUS APPLES** Lb. 25¢

BANQUET CREAM PIES 14 Oz. **4 FOR \$1**

Del Monte — No. 303 Cans **CUT GREEN BEANS 24¢**

Del Monte **PEACHES** 3 No. 2 1/2 Cans **89¢**

Hunt's **CATSUP** 5 14-Oz. Btls. **\$1.00**

WE GIVE **DOUBLE S&H GREEN STAMPS EVERY TUES.** WITH \$2.50 OR MORE PURCHASE

Smoked Hams

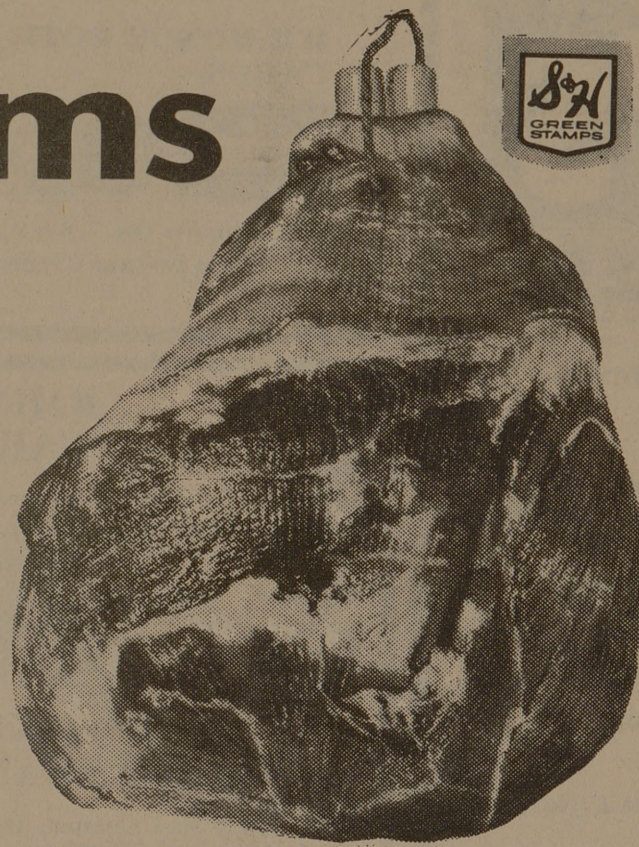
SHANK PORTION Lb. **39¢**
BUTT PORTION Lb. **49¢**
CENTER CUT SLICED Lb. **89¢**
CENTER CUT HAM ROAST Lb. **79¢**

HAM HOCKS Smoked lb **39¢**

BACON slab Piece lb **39¢**

SLICED BACON lb **69¢**

U.S.D.A. — GRADE "A" **FRYERS** Whole Lb. **29¢**
CUT UP FRYERS Lb. **35¢**



JAX BEER 6 Pk. Cans **99¢**

Cracker Barrel **CRACKERS** 1-Lb. Box **19¢**

Van Camp **PORK & BEANS** 16-Oz. Can **2/29¢**

Starkist **TUNA** Chunk 1/2 Size **39¢**

Austex **CHILI** No. 2 Beans Can **59¢**

Austex **TAMALES** 4 300 Cans **\$1.00**

QUANTITY RIGHTS RESERVED

PLAY... UNBEATABLE BONUS BONUS

for **EXTRA S&H GREEN STAMPS!**



NOW! THREE GREAT STORES TO SERVE YOU BETTER
4309 TEXAS AVE.
3516 TEXAS AVE.
200 E 24th ST.
BRYAN & TEXAS
COLLEGE STATION.

HUNT'S FRUIT COCKTAIL

4 300 Cans **\$1**