

THE PLASTIC HOME of Ron Kessinger of Golden, Colo., looks like something built for Martian families. The multiple-domed structure contains 1,600 square feet with no beams. Inflated plastic balloons are sprayed with foam to a thickness of five inches. The balloons are then deflated after the foam has hardened. The floor plan—two intersecting circles—contains a kitchen, a living-dining area, two bedrooms, a bathroom and a utility room. The cost excluding land was approximately \$28,000. (AP Wirephoto)

Remote mineral locator developed here by prof

A technique that may have future application in remote location of mineral deposits beneath ocean bottoms has been developed by Dr. Robert R. Unterberger of the Geophysics Department.

The process used to survey a sub-bottom salt dome in the Gulf of Mexico was detailed in a paper Unterberger gave at the 52nd annual meeting of the American Geophysical Union in Washington, D. C.

Unterberger's research report is titled "A Rubidium-87 Offshore Magnetic Survey over a Salt Dome."

The AGU geomagnetism and paleomagnetism section president, Alfred J. Zmuda, said the paper is of unusual interest.

The prof explained how two optically pumped rubidium 87 magnetometers were used to positively identify the location of the Mississippi River delta salt dome, the site of which was previously known.

One magnetometer was towed by ship along a set of precisely fixed lines over the dome. Readings of its resonance frequency differences were plotted as a function of the survey ship position.

A second identical magnetometer was located at Venice, La., as a base station. Both devices have a sensitivity capable of measuring magnetic differences of one part in 3 1/2 million. Because of the extreme sensitivity, the ship-towed instrument was mounted in a non-magnetic skiff to minimize extraneous influences.

The magnetometers record magnetic field in both analog and digital fashion every second, Unterberger said. By subtracting base station data from that of the ship-towed magnetometer, a magnetic anomaly was obtained over the salt dome, the top of which lay 700 feet below the ship.

Thus, on the data printout, the

salt dome appeared as an abrupt and easily discernible peak.

Unterberger said the magnetic anomaly of the dome represented a reasonable average magnetic susceptibility for Mississippi delta sediments.

"This anomaly was unobservable before subtracting the base station data," the scientist emphasized.

Development of the rubidium-87 magnetometer paired readings technique may make it possible to discern many types of sub-bottom features.

More than 2,500 scientists were in Washington for the five-day AGU professional convocation. It covered topics in environmental, earth and space sciences from the theories of continental drift and structure of the oceans and atmosphere to preliminary results of investigation of Apollo 14 moon samples.

Unterberger's was one of almost 1,000 contributed papers in 13 topical sections.

Read Battalion Classifieds

Build Your Library at LOU'S Expense
1000 Reference Books 45c to 95c
These were \$6.00 to \$10.00 Books

PIRATE TAPE SPECIAL

Reg. \$3.99 NOW \$2.79

- Thurs., Fri., & Sat.
- All New Releases.
- All Famous Artists.

in the
KEY HOLE at

VICK'S DRUG MART

Campus briefs

Mothers donate \$11,247

Mothers of A&M students donated \$11,247.50 in direct aid to campus organizations and students since September, according to a financial report released during the Federation of Texas A&M University Mothers' Clubs meeting this weekend.

Included was \$1,980 sent directly to project chairmen to aid the Fish Drill Team, Singing Cadets, Memorial Student Center, All Faiths Chapel, University Hospital, civilian student activities and scholarships. Not included in that figure is the emergency aid approximately 15 mothers clubs donated for the Singing Cadets' trip to the White House over the weekend.

The moms reported \$9,267.50 sent directly by the 51 clubs to university department or administered locally for scholarships. Included is \$6,670 in scholarships given by the mothers through local fund raising projects.

Corona designated top FDT member

Richard Corona of Houston has been designated the outstanding member of A&M's national champion Freshman Drill Team.

He received the Tommy Weishaupt Award in Parents Day activities from President Jack K. Williams.

The award honors former team

member Tommy Weishaupt, who died in 1969 in a hunting accident. The 1970 recipient was Robert K. Sparger of Fairfax, Va.

Transit systems lecture topic

E. K. Latvala, president of Transportation Technology, Inc., of Denver, will lecture on "Personalized Rapid Transit Systems" at 4 p.m. Friday in Room 121 of the Civil Engineering Building.

Latvala's talk is sponsored by the American Society for Engineering Education as a part of the current College of Engineering Lecture Series.

Equipment school started in valley

The Engineering Extension Service will begin Monday a four-week basic heavy equipment operations course for the Lower Rio Grande Valley Council of Governments.

Al Jones, chief instructor for the Heavy Equipment Operators Training Division of EES, said the purpose is to upgrade the skills of approximately 14 semi-skilled and manual laborers employed by Valley cities and counties.

Classes will be held in Edinburg for two weeks, Jones said, and the men will return to their regular jobs for on-the-job training. A second two-week class will be held in September to complete the program.

Writing clinic registration Friday

Registrations will be taken through Friday for the ninth Remedial Writing Clinic conducted through the Continuing Educa-

tion Office.

The clinic improves correctness and effectiveness of participants' writing through the use of special self-improvement methods.

Clinic sessions will meet evenings for three hours April 26-30. Registration at the Continuing Education Office in the Memorial Student Center is limited to individuals 16 years of age or older whose first-learning language was English. Participants can but need not be attending school, college or a university.

E.E. received NASA grant

The Electrical Engineering Department has received a \$21,300 NASA grant for continued research in reducing noise in communication systems.

Dr. C. R. Haden, associate professor, serves as principal investigator for the project, formally titled "Study of Cryogenic Noise Suppression." Co-principal investigators are Drs. C. W. Alworth and D. R. Gimlin, both assistant professors.

QUEEN

FIESTA NITE TONITE
"CHARRO DE LOS CALAVAROS"

CIRCLE DRIVE-IN

TONITE AT 7:00 P. M.
"I LOVE MY WIFE"
With Elliot Gould

At 9:00 p. m.
"STORY OF A WOMAN"

Skyway Twin

WEST SCREEN AT 7:00 P. M.

"NEW LEAF"

With Walter Matthau

At 9:00 p. m.

"TRUE GRIT"

With John Wayne

EAST SCREEN AT 7:15 P. M.

"PRETTY MAIDS ALL IN A ROW"

At 9:00 p. m.

"KELLYS HEROES"

PALACE

NOW SHOWING

1:30 - 3:14 - 5:20 - 7:24 - 9:30

Clint Eastwood

his love...or his life...

The Beguiled

A UNIVERSAL / MALPASO COMPANY PICTURE - TECHNICOLOR

CAMPUS

SHOWTIMES TODAY

1:30 - 4:00 P. M. - 6:40 - 9:15

AIRPORT

BURT LANCASTER - DEAN MARTIN

JEAN SEBERG

JACQUELINE BISSET

A UNIVERSAL PICTURE

How to be beautiful, underneath it all.

Under your makeup, keep your skin glowing with our two facial discs. They cream, they lotion, they perk you up.

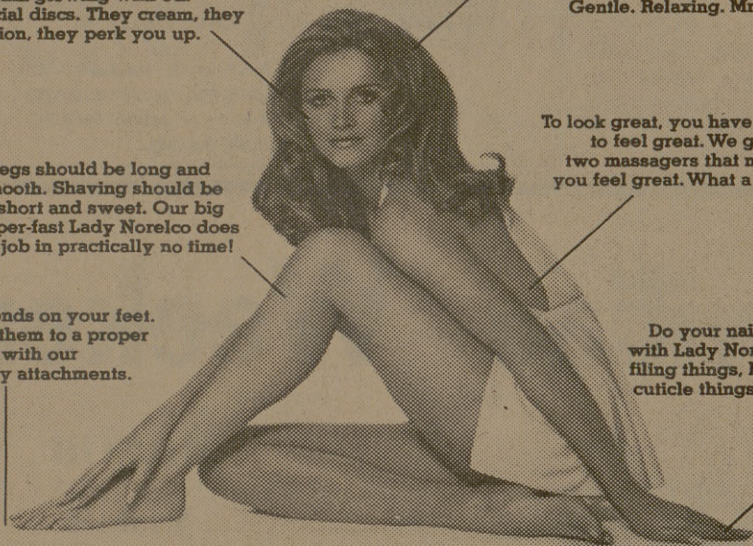
Shiny hair needs a healthy scalp. Stimulate yours with our deep massager. Gentle. Relaxing. Mmmm.

Legs should be long and smooth. Shaving should be short and sweet. Our big super-fast Lady Norelco does the job in practically no time!

To look great, you have to feel great. We give you two massagers that make you feel great. What a comfort.

A lot depends on your feet. Treat them to a proper pedicure with our six handy attachments.

Do your nails like a pro with Lady Norelco. You get filing things, buffing things, cuticle things, everything.



There are lots of little ways to make yourself beautiful. And the Lady Norelco Home Beauty Salon 30LS does all of them. It starts with the super-fast Lady Norelco shaver. With a great big shaving head to shave more of you at once. And a really close-shaving foil. (So it's finally easy to keep your legs and underarms perfectly smooth.)

It has eleven attachments that fit right onto the shaver and pamper you wherever you need pampering. It gives you a real beauty salon treatment, from a massage to a manicure.

It's a rich tulip yellow. It's fun to use. And it makes you feel beautiful. And that's what really counts, underneath it all.



Lady Norelco Home Beauty Salon

Norelco

©1971 North American Phillips Corporation, 100 East 42nd Street, New York, N. Y. 10017.

TAMU TOWNHALL PRESENTS



THREE DOG NIGHT

'Joy To The World' — Their Current No. 1 Hit
'Golden Biscuits' — Their Current No. 7 Album

"Consistency has been the keynote to the success Three Dog Night has enjoyed both on record and in live performances, stamping them as one of the biggest attractions in the rock field" — Billboard Magazine

G. ROLLIE WHITE COLISEUM
Saturday, April 24, 1971 — 7:30 p. m.
ONE HOUR CONCERT

Tickets On Sale Now At The
MSC Student Program Office, Tip Top Record Shop, Vick's Drug Mart
General Admission — \$3.50
Reserved \$4.50, \$5.00, \$5.50

Only limited number still available at Aggie discount
Tickets Sold Saturday 9-3 MSC Student Program Office

DISCOUNT MEAL
COUPON BOOKS ARE ON
SALE AT THE FOOD
SERVICES MANAGER'S
OFFICE, MSC

MONDAY EVENING SPECIAL

BROILED SALISBURY STEAK
W/SAUTEED ONIONS

Choice of two vegetables
Rolls - Butter
Tea or Coffee

\$0.99

TUESDAY EVENING SPECIAL

YANKEE BEEF POT ROAST

Potato Pancake
Choice of One Vegetable
Rolls - Butter
Tea or Coffee

\$0.99

WEDNESDAY EVENING SPECIAL

CHICKEN FRIED STEAK WITH CREAM GRAVY

Rolls - Butter
Tea or Coffee
and
Choice of any two vegetables

\$0.99

THURSDAY EVENING SPECIAL

ITALIAN CANDLELIGHT DINNER

ITALIAN SPAGHETTI Served with
Spiced Meat Balls & Sauce
Parmesan Cheese
Tossed Green Salad
Choice of Salad Dressing
Hot Garlic Bread
Tea or Coffee

\$0.99

FRIDAY EVENING SPECIAL

OCEAN CATTIFISH FILET

Tarter Sauce
Cole Slaw
Grandma's Cornbread
Rolls - Butter
Tea or Coffee
and
Choice of any two vegetables

\$0.99

SATURDAY SPECIAL

NOON AND EVENING

SLICED BARBECUED PORK LOIN

Choice of Two Vegetables
Rolls - Butter
Tea or Coffee

\$0.99

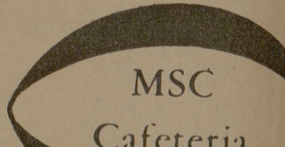
SUNDAY SPECIAL

NOON AND EVENING

ROAST TURKEY DINNER

Served With
Cranberry Sauce
Cornbread Dressing
Rolls - Butter
Tea or Coffee
Giblet Gravy
and your choice of any two vegetables

\$0.99



For your protection we purchase meats, fish and poultry from Government inspected plants.

"Quality First"