

perma-crosse
Westbury Slacks
Iva Starnes
University men's wear
229 University Drive 718-244-2764
College Station, Texas 77840

**BROWN - ALLEN
MOTOR CO.
OLDSMOBILE**
SALES - SERVICE
"Where satisfaction is
standard equipment"
2400 Texas Ave.

BUSIEK AGENCY
REAL ESTATE • INSURANCE
F.H.A.—Veterans and Conventional Loans
FARM & HOME SAVINGS ASSOCIATION
Home Office: Nevada, Mo.
3523 Texas Ave. (in Ridgcrest) 846-3708

FLOWERS
Complete *Hallmark* Store
Baby Albums - Party Goods
Unusual Gifts
Aggieland Flower & Gift Shoppe
209 University Drive
College Station 846-5825

**SOUTH OF
THE BORDER SALE**
"Weeklong Savings on All Cars!"
1971 Terino Cobra
High back, bucket seats, cruiseomatic, power
steering, power brakes, air conditioned, rear
speakers, side moldings, tinted glass wheel
covers.
**SPECIAL PRICE
\$4062**
CADE FORD
LINCOLN/MERCURY
"Bryan's Better Idea Folks Since 1916"
1309 TEXAS AVE.

Ags go Bear hunting Saturday night in Waco

By CLIFFORD BROYLES
Battalion Sports Editor

The Texas Aggies and Baylor Bears, both in the midst of frustrating seasons, get together for the 67th time Saturday night at Baylor Stadium in Waco.

The Aggies are in the middle of a four-game win drought—that has many people baffled—after their good start in which they defeated Wichita State and LSU and played highly ranked Michigan to the wire in Ann Arbor.

The last two weeks have been tough ones for the Aggies, as they have dropped conference battles to Texas Tech and Texas Christian and have looked extremely bad doing it. Tech marched to win 21-7, and the Horned

Frogs nearly blew the Aggies out of Kyle Field in the first half only posting a 31-15 victory.

Baylor, after going winless last year, has stumbled before powerful Missouri and Arkansas by wide margins, played well against LSU but lost, had 18th ranked Pittsburgh in the hole until the Panthers scored in the final two minutes and snapped an 11-game losing streak with a 10-7 win over Army.

The Aggies will be in undetermined physical condition, but the Bears will be in top shape for the 7:30 p.m. kickoff that will mark the Baylor homecoming.

The A&M injured list varies from day to day. Monday 10 players were missing from workouts. Wednesday the list grew to 11.

Still doubtful for the encounter will be fullback Doug Neill, line-backer Mike Lord and defensive end Todd Christopher.

It's sort of a touch-and-go situation, Coach Gene Stallings said Thursday of the injuries.

The Aggies will line up with Lex James calling the signals at quarterback. James completed 10 of 24 against TCU with Homer May, his leading receiver, grab-

bing four to take over the team leadership with 18 receptions.

Split end Joey Herr made two outstanding catches in the TCU game and has been moved ahead of Hugh McElroy at that post.

Mike Park will line up at center, Benny DeWitt and Andy Phillely at the tackles and Leonard Forey and Jim Parker at the guards.

Steve Burks, the Aggies' leading rusher with 298 yards, will line up at right halfback and Marc Black will step in at full-back if Neill can't go. Brad Dusek, who has gained 153 yards on the ground this year, will play left halfback.

Either Laney Cook or Si Southall will call the plays for Baylor. Cook, a good runner, has worked some at tailback this week. He is the team's second leading rusher with 177 yards and has completed 38 per cent of his passes for 218 yards. Southall has hit on 35 per cent of his throws for 194 yards.

The Bears' top threat is tail-back Matthew Williams, who has bulled out 249 yards this season and scored the only touchdowns the team has managed rushing.

Ed Marsh is the Bears' all-around handy man. Last season he led the nation in punting. This

Finley and Dennis Carruth will man the posts.

Dave Elmendorf will be at free safety alongside strong safety David Hoot, with Ed Ebrum and Bland Smith at the cornerbacks.

The Baylor defense is led by linebacker David Jones. Jones has

been awarded a "Fightin' Bear" award after four of the five games because of his contribution to the team was above his normal for a game. Two-year letterman Trent Phipps and Dennis Watson help mold the Baylor defensive line together.



FRED CONTRERAS of F-2 sidesteps Roger Scott of K-1 on his way to a touchdown in F-2's 14-0 quarterfinal victory in intramural football playoffs this week. In championship play Thursday Squadron 2 captured the Class A title with a 16-6 win over L-1 and the Electrical Engineers zipped by Law Hall 12-0 for the Class C. crown. (Photo by Mike Stephens)

Longhorns roll in soccer play

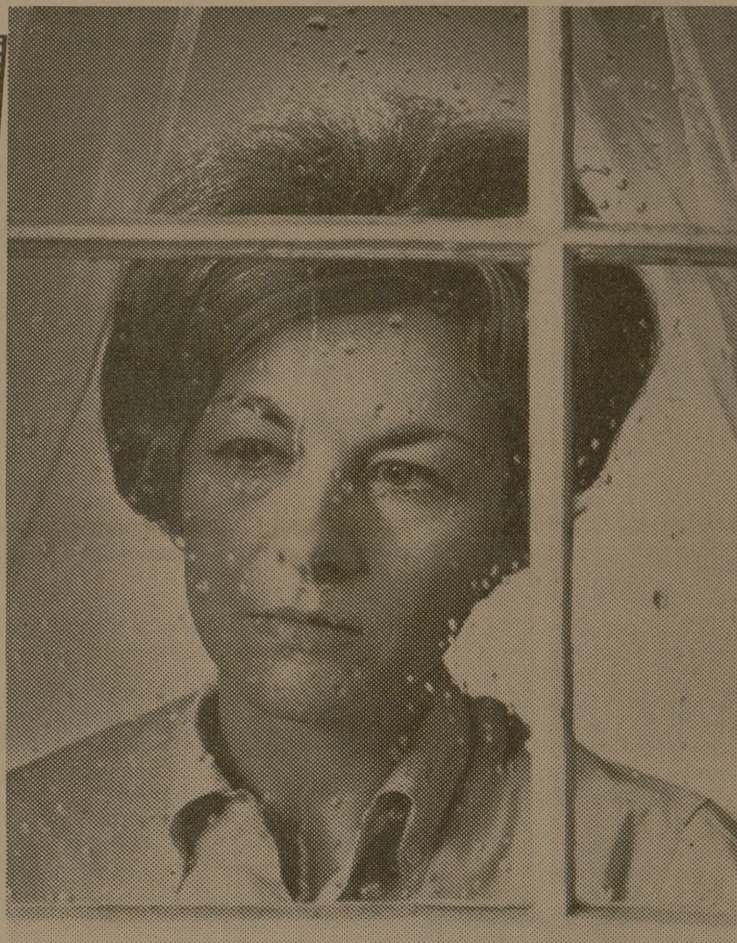
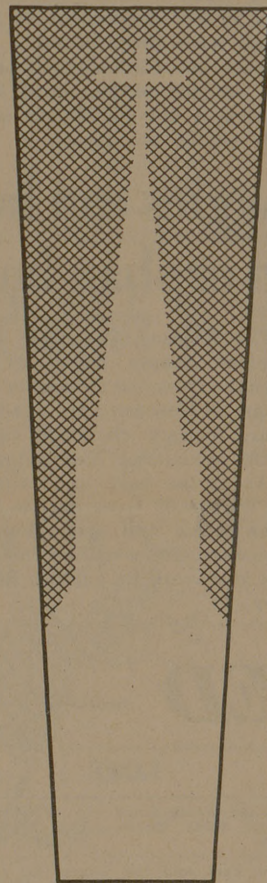
Who can stop the Longhorns? In the Texas Collegiate Soccer League, that is an even bigger question than in football this fall as the Orange and White, which has lost only one game in four years of League play, rolled to its fifth consecutive victory last weekend in Austin, a 6 to 0 whitewash of highly regarded University of Texas at Arlington.

The suspicion in the League now is that if anybody is to stop Texas, it will have to be St. Mary's University, which knocked off its fifth straight opponent Sunday, downing aggressive Texas Tech, 7 to 4, in San Antonio. St. Mary's remains tied with Texas with an identical 5-0 League record, and the key game of the season may boil down to the Texas-St. Mary's collision in San Antonio, Oct. 31.

In College Station, Texas A&M exploded to a 8 to 1 smashing of TCU (0-4) to boost the Aggies' league mark to 3-2-1. Houston kept up with the Aggies by smothering Midwestern (0-5) in Wichita Falls, 7 to 0. Stephen F. Austin (3-4) edged Rice (0-4) in Houston, 2 to 1.

A&M hosts unbeaten St. Mary's of San Antonio at 2 p.m. Saturday on the drill field in front of the MSC in a game that will be crucial to determining if the Aggies have a shot at the league title. A&M has a non-league encounter with Texas A&I on the drill field Sunday at 1 p.m.

The Church.. For a Fuller Life.. For You..



The world never looked so empty — gray and overcast, and no one to talk to. Depressed, I stepped to the window sightlessly taking in the familiar view.

Off to the left, unremembered, was the church steeple. It thrust up out of the green trees like a white exclamation point in my mind.

Suddenly, I wanted to laugh out loud. How foolish of me to think of myself as alone! We are never alone; God has promised us that.

I thanked Him for the steeple, the visible reminder of His love, and for the whole Church which draws men together against the emptiness of the world.

Scriptures selected
by the American
Bible Society

| | | | | | | |
|--------------------|----------------------|--------------------|-------------------|------------------|----------------|------------------|
| Sunday | Monday | Tuesday | Wednesday | Thursday | Friday | Saturday |
| Genesis 4:17-24 | Colossians 3:1-19 | Genesis 5:21-24 | Psalms 16:1-11 | Psalms 23:1-6 | John 15:1-8 | Romans 6:1-14 |

CALENDAR OF CHURCH SERVICES

ST. THOMAS EPISCOPAL
905 Jersey Street, So. Side of Campus
Rector: William R. Oxley
Asst.—Rev. Wesley Seeliger
8:00 A.M. & 9:15 A.M. Sunday Services

A&M CHURCH OF CHRIST
8:00 & 10:00 A.M. Worship
9:00 A.M.—Bible Study
5:15 P.M.—Young People's Class
6:00 P.M.—Worship
7:15 P.M.—Aggie Class
9:30 A.M.—Tues.—Ladies Bible Class
7:15 P.M.—Wednesday—Bible Study

UNIVERSITY LUTHERAN
(Missouri Synod)
9:30 A.M.—Bible Class
10:45 A.M.—Divine Worship
7:35 P.M.—Wednesday Vesper
6:30 P.M.—Worship Celebration
Sunday Evening

UNITARIAN FELLOWSHIP
305 Old Highway 6, South
10:00 A.M.—Sunday Service
7:00 P.M.—Adult Service
305 Old College Road South

A&M PRESBYTERIAN
7-9 A.M.—Sun. Breakfast—Stu. Ctr.
9:45 A.M.—Church School
11:00 A.M.—Morning Worship
6:00 P.M.—Sun. Single Stu. Fellowship
7:15 P.M.—Wed. Student Fellowship
6:45 A.M.—Fri. Communion Service
Wesley Foundation

CHURCH OF THE NAZARENE
9:45 A.M.—Sunday School
10:45 A.M.—Morning Worship
6:30 P.M.—Young People's Service
7:00 P.M.—Preaching Service

CHRISTIAN SCIENCE SOCIETY
9:30 A.M.—Sunday School
11:00 A.M.—Sunday Service
11:00 A.M.—2 P.M.—Tues. Reading Rm.
7:00-8:00 P.M.—Wed., Reading Room
8:00 P.M.—Wed. Evening Worship

FIRST BAPTIST
9:30 A.M.—Sunday School
10:45 A.M.—Morning Worship
6:10 P.M.—Training Union
7:20 P.M.—Evening Worship
6:45 P.M.—Choir Practice & Teachers' meetings (Wednesday)
7:45 P.M.—Midweek Services (Wed.)

SECOND BAPTIST
710 Eisenhower
9:45 A.M.—Sunday School
11:00 A.M.—Church Service
6:30 P.M.—Training Union
7:30 P.M.—Church Service

OUR SAVIOUR'S LUTHERAN
8:30 & 10:45 A.M.—The Church at Worship
9:30 A.M.—Bible Classes For All
Holy Communion—1st Sun. Ea. Mo.

CENTRAL CHRISTIAN CHURCH
3205 Lakeview
9:45 A.M.—Bible School
10:45 A.M.—Morning Worship
6:00 P.M.—Youth Hour
7:00 P.M.—Evening Worship

ST. MARY'S CATHOLIC
Sunday Masses—9:00 and 11:00 A.M.
Saturday Mass—7:00 P.M.

FAITH CHURCH UNITED CHURCH OF CHRIST
9:15 A.M.—Sunday School
10:30 A.M.—Morning Worship
7:30 P.M.—Evening Service

COLLEGE HEIGHTS ASSEMBLY OF GOD
9:45 A.M.—Sunday School
11:00 A.M.—Morning Worship
6:30 P.M.—Young People's Service
7:30 P.M.—Evening Service

A&M METHODIST
9:45 A.M.—Sunday School
10:55 A.M.—Morning Worship
5:30 P.M.—Campus & Career Class
5:30 & 6:00 P.M.—MYF Meetings

CHURCH OF JESUS CHRIST OF LATTER DAY SAINTS
26th East and Coulter, Bryan
8:30 A.M.—Priesthood meeting
10:00 A.M.—Sunday School
5:00 P.M.—Sacrament Meeting

FIRST CHRISTIAN CHURCH Homestead & Ennis
9:45 A.M.—Sunday School
10:50 A.M.—Morning Worship
5:30 P.M.—Young People

GRACE BAPTIST CHURCH
2505 S. College Ave., Bryan
An Independent Bible Church
9:45 A.M.—Sunday School
10:50 A.M.—Morning Worship
7:00 P.M.—Prayer and Bible Study

Hillier Funeral Home
BRYAN, TEXAS
502 West 26th St.
PHONE TA 2-1572

Campus and Circle Theatres
College Station
College Station's Own Banking Service

University National Bank
NORTH GATE
Sure Sign of Flavor

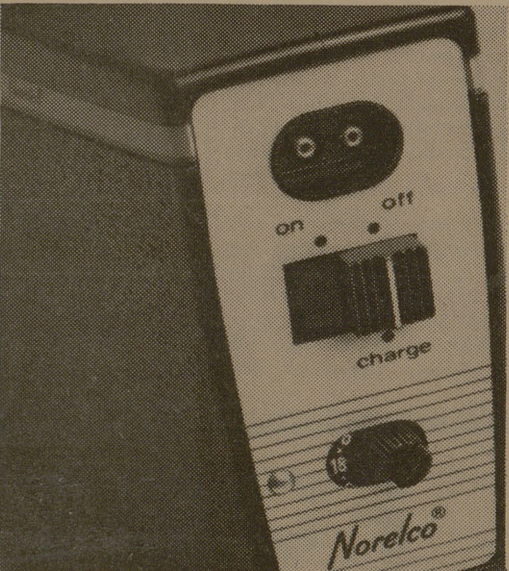
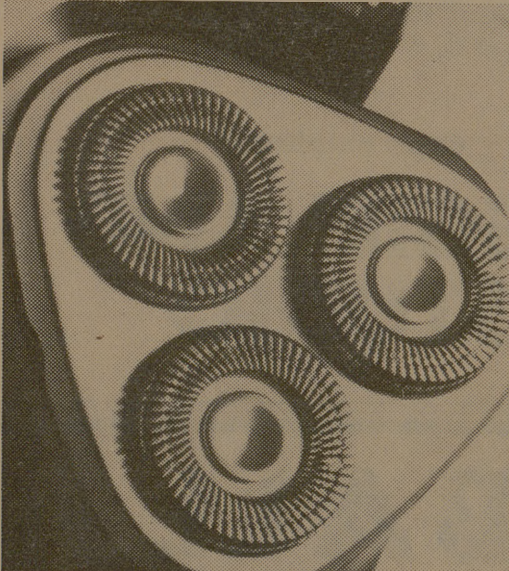
ICE CREAM
SANITARY Farm Dairies

Central Texas Hardware Co.
BRYAN
• HARDWARE
• CHINAWARE
• CRYSTAL
• GIFTS

Lilly
ICE CREAM AND MILK

The Exchange Store
"Serving Texas Aggies"

BB & L
BRYAN BUILDING & LOAN ASSOCIATION



This is what we have against blades.

A shaver that shaves as close or closer than the new platinum and chromium blades.

99 men tested our Norelco Tripleheader 35T against these new blades. Each shaved one side of his face with a blade and the other with the Tripleheader. Our three floating heads followed the curves of their faces. And our eighteen rotary blades shaved in every direction at once (that's the way blades grow).

Blades can't do all this. They're straight. And that's why seven out of ten men said the Tripleheader shaved them as close or closer than the new blades.

What's more, the Tripleheader has a pop-out trimmer. So you can get your sideburns straight and even for a change.

Now what blade can compete with that?

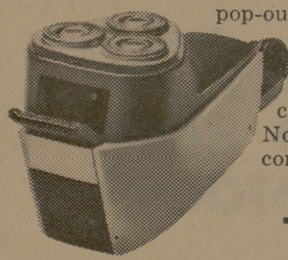
This is what we have against other rechargeables.

A rechargeable that gives up to twice as many shaves per charge as any other rechargeable.

Our Rechargeable Tripleheader 45CT has all the features of our regular Tripleheader. It has three Microgroove™ floating heads. And eighteen rotary blades that continuously sharpen themselves to cut down on bothersome blade replacement. And a hidden pop-up trimmer for neat sideburns and mustaches.

It also has some special features all its own. A Shave Counter that automatically counts your shaves and tells you when to recharge. A Charge Indicator that lights up when it's recharging. And, of course, the Rechargeable can shave with or without a cord.

Now what rechargeable can compete with that?



The Norelco Tripleheaders
You can't get any closer

Norelco® © 1970 North American Philips Corporation, 100 East 42nd Street, New York, N.Y. 10017.