

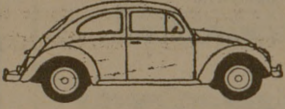
# Holstein sold to Dominicans



**sero**  
OF NEW HAVEN/A GENTLEMAN'S SHIRT  
**Iva Starnes**  
university men's wear  
329 University Drive 713/846-2706  
College Station, Texas 77840

J. C. (Jim) Harris

**THE BUG SHOP, Inc.**  
1911 So. College Ave.  
Bryan, Texas 77801  
Phone 822-5383



Bryan's Leading Independent Volkswagen Service

## FUN DINING AT MSC

Give the cook the evening off and dine from 5 to 7 p. m. for \$0.99 or less at the MSC cafeteria. It would be difficult to cook a balanced meal for the same low cost at home. While at the MSC cafeteria, purchase a DISCOUNT MEAL COUPON BOOK and compound your meal savings. Ask the man who owns one.

A registered Holstein bull has been sold by the Texas A&M University Animal Science Department to the Dominican Republic. The bull, along with a consignment of about 22 head of Holsteins and Brown Swiss from Texas dairymen, will be trucked Saturday (Aug. 1) from Texas to Miami, Fla. From there they will be flown to the Dominican Republic and used for herd improvement at the Instituto Superior de Agricultura.

The institute is a vocational agriculture high school and junior college. Among its staff members are six Dominican agriculturists who received their BS degrees from the A&M College of Agriculture.

Dr. F. E. Leighton, A&M dairy scientist, said the bull's registered name is Agtex Big Forty-Niner Burke. The selling price was \$1,000.

He said the sire "is out of the best cow we have had in the A&M dairy herd." "We have a full brother to this bull, and we are now using him in our herd," Leighton pointed out.

Forty-Niner Burke's dam is Agtex EIC Raven Maiden who has produced a high of 26,140 pounds of milk and 687 pounds of

butterfat in one year. Her total production to date is 126,505 pounds of milk.

Bill Beach of the A&M Office of International Programs said the University has been cooperating since 1963 with the Dominican

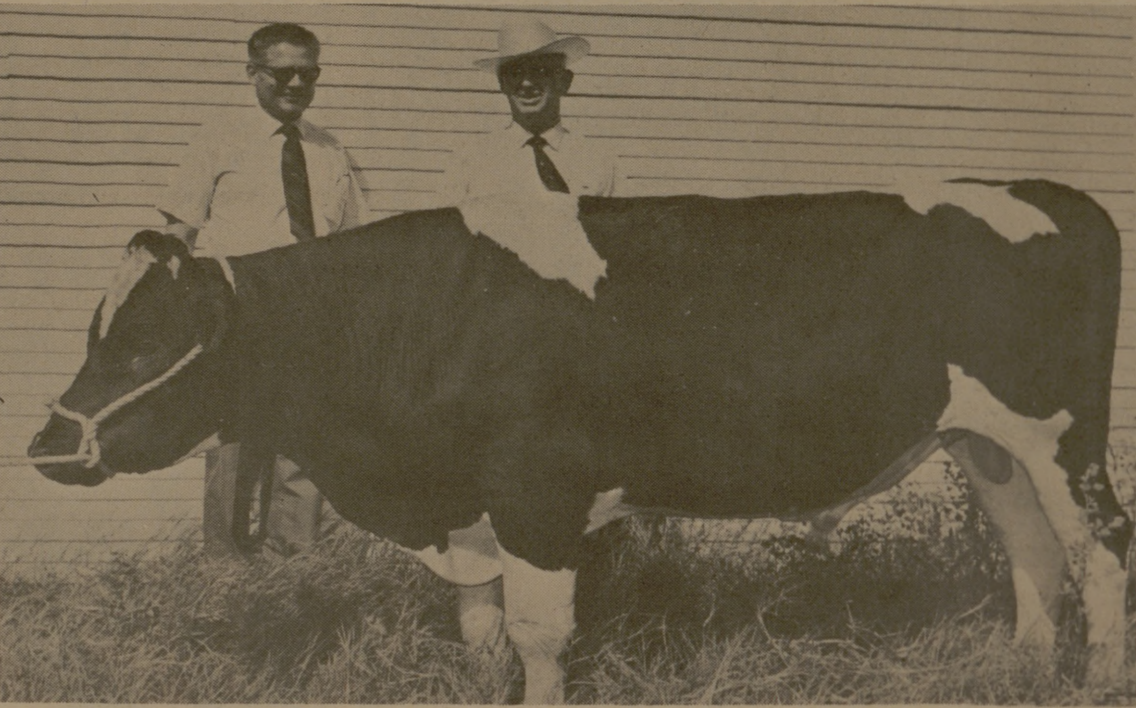
government and the Santiago Development Association, buyers of the dairy cattle consignment.

Many of the ISA activities have been supported by the Ford Foundation.

The development association is

an organization of Dominican business and professional men interested in economic progress of their country.

Beeach is coordinator of the overall Dominican project for Texas A&M.



Shown with registered bull are l. to r., Bill Beach, R. E. Leighton

## LOW, LOW PRICES EVERY DAY Plus SPECIALS! SAFEWAY

**OPEN SUNDAYS FOR YOUR SHOPPING CONVENIENCE**  
SAFEWAY IN TOWNSHIRE — 9 A.M. TO 8 P.M.

**Special!**  
**Cream Pies**  
Bel-air, 14-oz. Assorted Pkg. **22¢**

**EVERYDAY LOW PRICES!**  
**Diet Bread** \*Light or \*Dark, Skylark 1-Lb. Loaf **27¢**  
**Wheat Bread** Muff Grain, Skylark 1-Lb. Loaf **29¢**  
**White Bread** Mrs. Wright's, \*Regular or \*Standard Sliced 1 1/2-Lb. Loaf **29¢**

**Special!**  
**Charcoal**  
Briquets, Grillit 10-Lb. Bag **49¢**  
(20-Lb. Bag 98¢)

**Cheese Pizza** Bel-air 16-oz. **65¢** Why Pay 67¢  
**Pot Pies** Spare Time, \*Beef or \*Chicken or \*Turkey 2 6-oz. Pkg. **33¢** Why Pay 37¢  
**Potatoes** Shoestring, Bel-air 20-oz. Pkg. **35¢** Why Pay 37¢  
**Baby Okra** Whole, Bel-air 10-oz. Pkg. **29¢** Why Pay 31¢  
**Broccoli** Chopped, Birds Eye 10-oz. Pkg. **25¢** Why Pay 27¢

**Special!**  
**Ice Cream**  
Snow Star, Assorted Flavors! 1/2-Gal. Carton **59¢**

**Special!**  
**Zippy Relish** Hot Dog 12-oz. **33¢** Why Pay 35¢  
**Miracle Whip** Kraft 10-oz. Jar **53¢** Why Pay 55¢  
**Tomato Catsup** Highway 14-oz. Jar **19¢** Why Pay 21¢  
**Paper Plates** Brocade, 100-Ct. Box **69¢** Why Pay 73¢  
**Dixie Cups** Cold Drink, 9-oz. Size 25-Ct. Pkg. **35¢** Why Pay 37¢  
**Aluminum Foil** Kitchen Craft 25' x 12" Roll **25¢** Why Pay 29¢

**Big Buy!**  
**Dinners**  
All Varieties, Banquet, Reg. Frozen Pkg. **38¢**

**Special!**  
**Sour Cream** Lucerne, 8-oz. **29¢** Why Pay 31¢  
**Yogurt** Lucerne, Assorted Flavors 1/2-Pt. Ctn. **25¢** Why Pay 29¢  
**Fresh Milk** Lucerne, Low Fat 1/2-Gal. Ctn. **59¢** Why Pay 53¢  
**'Choc' Milk** Lucerne, Chocolate 1/2-Gal. Ctn. **33¢** Why Pay 35¢

**Big Buy!**  
**Canned Pop**  
Cragmont, Assorted Flavors 12-oz. Can **8¢**

**Strawberries** Sliced, Bel-air 10-oz. Pkg. **33¢** Why Pay 35¢  
**Cherry Supreme** Birds Eye Pkg. **43¢** Why Pay 45¢  
**Bel-air Peaches** Frozen 5-oz. Pkg. **29¢** Why Pay 31¢  
**Bel-air Waffles** Breakfast Treat! 5-oz. Pkg. **10¢** Why Pay 11¢

**Big Buy!**  
**Lemonade**  
Scotch Treat, Regular, Frozen 6-oz. Can **10¢**

**EVERYDAY LOW PRICES!**  
**Dad's Root Beer** Old Fashion 1 1/2-Gal. Jar **48¢** Why Pay 50¢  
**Instant Coffee** Edward's, Freeze Dried Jar **99¢** Why Pay \$1.04  
**Bugle Snacks** General Mills Box **41¢** Why Pay 43¢  
**Corn Chips** Fritos 6-oz. Bag **31¢** Why Pay 33¢

**Special!**  
**Corn on Cob**  
Bel-air, Summer Treat! 4 Ct. Pkg. **39¢**

**Special!**  
**Perch Fillets**  
Captain's Choice, 16-oz. Ocean Perch Pkg. **49¢**

**Big Buy!**  
**Potato Chips**  
Party Pride Twin Pak **49¢**

**French Toast** Downyflake 15-oz. Pkg. **49¢** Why Pay 51¢  
**Orange Juice** Scotch Treat, From Florida 4-oz. Can **20¢** Why Pay 21¢  
**Grape Juice** Captain's Choice 6-oz. Can **20¢** Why Pay 23¢  
**Fish Sticks** Pre-Cooked, 8-oz. Pkg. **39¢** Why Pay 41¢  
**Onion Rings** French Fried, Bel-air, Frozen 4-oz. Pkg. **37¢** Why Pay 39¢  
**Green Peas** Bel-air 10-oz. Pkg. **19¢** Why Pay 21¢

**Special!**  
**Peaches** Val Vita Sliced, Cting. In Light Syrup 29-oz. Can **25¢** Why Pay 27¢  
**Apple Sauce** Musselman's 1 1/2-Gal. Can **23¢** Why Pay 25¢  
**Red Cherries** Town House, Sour Pitted 16-oz. Can **29¢** Why Pay 31¢  
**Fruit Cocktail** Stokley's 16-oz. Can **27¢** Why Pay 29¢  
**Pineapple** Dale, Quick-Frozen, In Natural Syrup 20 1/2-oz. Pkg. **41¢** Why Pay 45¢  
**Blueberries** Stewart's 15-oz. Can **43¢** Why Pay 45¢

**Golden Corn** Libby's Cream Style 16 1/2-oz. Can **22¢** Why Pay 23¢  
**Cut Okra** Troppay 15 1/2-oz. Can **24¢** Why Pay 26¢  
**Libby Peas** Garden Sweet 17-oz. Can **22¢** Why Pay 23¢  
**Hunt's Tomatoes** Solid Pack 14 1/2-oz. Can **24¢** Why Pay 26¢

**Big Buy!**  
**Detergent**  
Parade, Washday Favorite! 49-oz. Box **49¢**

**Big Buy!**  
**Facial Tissues**  
Silk, Assorted Colors 150-Ct. Box **17¢**

**Ivory Soap** Laundry 2 6-oz. Bars **25¢** Why Pay 27¢  
**Sta-Flo Starch** Liquid 27-oz. Jar **27¢** Why Pay 29¢  
**Comet** Cleaner 14-oz. Can **17¢** Why Pay 19¢  
**Ammonia** Parson's Cloudy 15-oz. Can **16¢** Why Pay 18¢  
**Spray Starch** Niagara 15-oz. Can **57¢** Why Pay 59¢

**COMPARE LOW PRICES!**  
**Kotex Napkins** Sealtory, 12-Ct. Box **39¢** Why Pay 41¢  
**Cold Cups** Bandwara, Stripe Design 40-Ct. Box **49¢** Why Pay 51¢  
**Toilet Tissue** White, A-1 4-Roll Pkg. **29¢** Why Pay 33¢  
**Paper Napkins** Silk, Assorted Colors 60-Ct. Box **9¢** Why Pay 11¢  
**Bake Cups** Bandwara, 88-Ct. Box **12¢** Why Pay 15¢

**Special!**  
**Ivory Liquid**  
Detergent, 22-oz. (10¢ Off Label) Plastic **39¢**

**Special!**  
**Towels**  
Paper, Kleenex, Designer Roll **29¢**

**Pine Sol** Disinfectant 15-oz. Gallon **58¢** Why Pay 60¢  
**Liquid Bleach** White Magic 15-oz. Gallon **38¢** Why Pay 41¢

**Special!**  
**Towels**  
Paper, Kleenex, Designer Roll **29¢**

**Fresh Fruits & Vegetables!**  
**Fresh Corn**  
Large Tender Sweet Ears **10 for 69¢**

**Fresh Fruits & Vegetables!**  
**Fresh Corn**  
Large Tender Sweet Ears **10 for 69¢**

**Peaches**  
Yellow Freestone —Lb. **25¢**

**Lettuce**  
Large Crisp Heads —Each **19¢**

**Cucumbers** Selected Sizes —Each **10¢**  
**Bell Peppers** Large Sizes —Each **10¢**  
**Green Onions** Large Bunches **2 Bunches 25¢**  
**Red Radishes** Solid Favorite 2 6-oz. Cello **25¢**  
**Oranges** Valencia, California Grown Dole Cello **69¢**

**Bartlett Pears** Large Size —Lb. **29¢**  
**Sunkist Lemons** Refreshing Cello Dole **49¢**  
**Watermelons** Charleston Grey 24 to 28-Lb. Size —Each **79¢**  
**Seedless Melons** Watermelons —Lb. **5¢**  
**Green Beans** Kentucky Variety —Lb. **29¢**

**Bananas**  
Golden Ripe Safeway Special! —Lb. **10¢**

**Cabbage**  
Texas Grown, Crisp Heads —Lb. **10¢**

**Safeway Meats Are Guaranteed to Please!**  
**Boneless Roast** —Lb. **79¢**  
\*Chuck or \*Shoulder  
USDA Choice Grade Heavy Beef  
**Rib Steaks** USDA Choice Heavy Beef —Lb. **95¢**  
**Smoked Picnics** (Sliced) 6 to 8-Lb. Avg. Whole **39¢**  
(Half or \*Whole —Lb. **45¢**)  
**Boneless Steak** Chuck, USDA Choice Heavy Beef —Lb. **89¢**  
**Tom Turkeys** 12 to 24-Lb. Avg. USDA Insp. Grade 'A' —Lb. **37¢**  
**Smoked Hams** 12 to 14-Lb. Avg. —Lb. **75¢**  
**Canadian Bacon** Morrill (By the piece) —Lb. **\$1.09**  
**Canned Hams** Armour's 5-Lb. Can **\$5.49**  
**Canned Picnics** Armour's 3-Lb. Can **\$2.88**  
**Ground Chuck** Lean Beef —Lb. **79¢**  
**Ground Beef** Safeway Handy Club Pak **\$1.29**  
**Chopped Sirloin** Compare Fat & Lean Content! —Lb. **\$1.09**  
**Armour Franks** or \*Safeway, All Meat —Lb. **69¢**  
**Top Sirloin Steak** Bonitas, USDA Choice Heavy Beef —Lb. **\$1.49**  
**Grill Dogs** Armour Star 1-Lb. Pkg. **75¢**  
**Sliced Bologna** Safeway, \*Reg. or \*Thick Pkg. —Lb. **75¢**  
**Armour Cervelat** Texas-Style, By the piece —Lb. **69¢**  
**Stick Salami** Safeway, By the piece —Lb. **79¢**  
**Lunch Meat** Safeway, \*Pickle-Pimiento or \*Morrill's Choice or \*Sliced \*All Beef Bologna or Olive —Lb. **\$1**  
**Lunch Meat** Eckrich, Sliced, \*Honey or \*Pepper or \*Barbecue —Lb. **79¢**  
**Corn Dogs** Great for Snacks! 10-Ct. Pkg. **\$1**  
**Slim Sticks** Chicken Fried —Lb. **99¢**  
**Liver Cheese** Armour Star, Sliced 6-oz. Pkg. **47¢**  
**All Meat Franks** Safeway, Family Favorite! Pkg. 12-oz. **55¢**  
**Short Ribs** USDA Choice Heavy Beef —Lb. **45¢**  
**Arm Roast** Full Cut, USDA Choice Heavy Beef —Lb. **75¢**  
**7-Bone Roast** or \*Steak, USDA Choice Heavy Beef —Lb. **69¢**  
**Chuck Roast** Full Side Cut, USDA Choice Heavy Beef —Lb. **63¢**  
**New York Steak** Bonitas Strip, USDA Choice Heavy Beef —Lb. **\$1.99**  
**Pork Chops** Quarter Sliced Pork Loin —Lb. **75¢**  
**Leg Quarters** Cut From USDA Insp. Grade 'A' Fryers —Lb. **39¢**  
**Breast Quarters** Cut From USDA Insp. Grade 'A' Fryers —Lb. **45¢**  
**Drumsticks** or \*Thighs, Cut From USDA Insp. Grade 'A' Fryers —Lb. **65¢**

**EVERYDAY LOW PRICES!**  
**Vienna Sausage** Armour's 5-oz. Can **23¢** Why Pay 25¢  
**Swift's Prem** Lunch Meat 12-oz. Can **55¢** Why Pay 58¢  
**Big Buy!**  
**Grade 'A' Eggs**  
Breakfast Gems, Medium Size Doz. **37¢**

**Big Buy!**  
**Pork & Beans**  
Campbell's, Family Favorite! 16-oz. Can **14¢**  
**Tomato Soup** Town House 10 1/2-oz. Can **10¢** Why Pay 12¢  
**Chunk Tuna** Sea Trader, Light Meat 3 4 1/2-oz. Cans **\$1** Why Pay 2 35¢  
**Mouthwash** Safeway, \*Amber or \*Blue or \*Red Label 16-oz. **39¢**  
**Toothbrush** Safeway, \*Soft or \*Tuff or \*Soft or \*Tuff —Each **39¢**

**Cheese Spread** Events, Instant Process 2-Lb. Box **59¢** Why Pay 63¢  
**Garlic Spread** Lobelle 2 1/2-oz. Jar **35¢** Why Pay 37¢  
**Cinnamon Rolls** Pillsbury, Quick 8 3-oz. Cello **28¢** Why Pay 29¢  
**Cream Cheese** Lucerne 2 3-oz. Pkg. **25¢** Why Pay 27¢  
**Biscuits** Mrs. Wright's, \*Sweet Milk or \*Buttermilk Can 8-oz. **8¢** Why Pay 10¢  
**Margarine** Empress Soft 1-Lb. Ctn. **37¢** Why Pay 39¢

**Special!**  
**ToothPaste**  
Safeway, \*Hexachlorophene or \*Fluoride 6 1/2-oz. Tube **39¢**

Prices Effective Thurs., Fri., Sat. and Sun, Aug. 6, 7, 8 and 9, in BRYAN. We Reserve the Right to Limit Quantities. No Sales to Dealers.

**SAFEWAY**  
© Copyright 1960, Safeway Stores, Incorporated.

**YOU CAN'T LOSE WHEN YOU TRADE AT LOU'S**  
CASH REFUND FOR TWO WEEKS

**PALACE**  
Bryan 2-8879  
TODAY—1:30-3:30-5:30-7:30-9:30  
JACK LEMMON SANDY DENNIS  
A NEIL SIMON STORY  
THE OUT-OF-TOWNERS  
COLOR BY MOVIE-LAN A PARAVANT PICTURE

**CAMPUS**

**WOODSTOCK**  
a wadleigh-maurice, lid, production technicolor® from warner bros. STARTS TODAY 1:45 - 5:15 - 9 P. M.

**QUEEN**  
LAST NITE — 7:15 - 9:15 P. M.  
"GIRLS WHO DO ANYTHING"  
"WHEN THE BEST PICTURES PLAY" DRIVE-IN THEATRE  
"LIVE UNDER 12 YEARS" FREE

WEST SCREEN AT 8:45 P. M.  
"MAROONED" (G)  
With Gregory Peck  
At 11:00 p. m.  
"HOOK, LINE & SINKER" (G)  
EAST SCREEN AT 8:15 P. M.  
"THE ADVENTURERS" (R)  
At 11:00 p. m.  
"STRANGE AFFAIR"

**CIRCLE**  
TONITE AT 8:45 P. M.  
"BALLAD OF CABLE HOUSE"  
At 11:00 p. m.  
"MOON ZERO II"