

Dr. Thomas R. Richmond wins award

Dr. Thomas R. Richmond of the Texas A&M University Soil and Crop Sciences Department has been named winner of a U.S. Department of Agriculture Superior Service Award.

The honor came during the recent 24th annual USDA Honor Awards Program in Washington, D.C. Presentation was by Secretary of Agriculture Clifford M. Hardin, and Sen. Carl T. Curtis of Nebraska was the main speaker.

Richmond, a member of the USDA's Agricultural Research Service, was among 86 persons

in the United States to receive Superior Service Awards.

The research agronomist was cited "for improving knowledge of cotton genetics and breeding through personal research, effective leadership of a research team, coordination of a regional research project, and training of scientists in genetics."

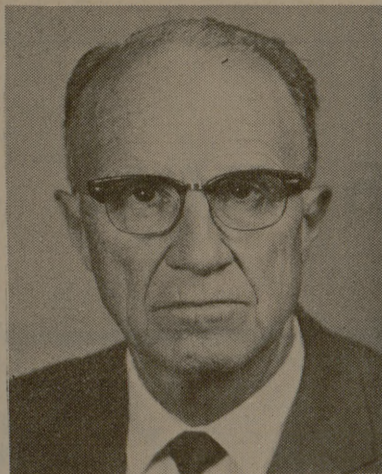
Richmond entered federal service in 1932 when he joined the Bureau of Plant Industry, Soils and Agricultural Engineering, at Greenville, Texas. In 1946, he received a grant to conduct explor-

ations for certain species of cotton in Central America. And in 1957, he was invited by the French Government to appraise cotton research and production problems in Africa.

This past January and February, he served as an agricultural consultant to the World Bank on a mission to Sudan in Africa.

Richmond holds BS and MS degrees from Texas A&M. His doctoral degree is from the University of Minnesota.

The scientist lives at 505 Crescent in Bryan.



DR. THOMAS R. RICHMOND

Women's swimming classes set

Special swimming classes for women will be conducted beginning June 16 at Texas A&M by the Health and Physical Education Department.

Two four-week sessions for beginning and advanced swimmers will be conducted at P. L. Downs Jr. Natatorium, announced Dr. Carl Landiss, department head.

Registration for both classes will be June 16 at Coach Art Adamson's office in the natatorium.

First session beginners classes will be 5 to 6 p.m. Tuesdays and Thursdays from June 16 to July 11.

First session advanced classes also will meet at 5 p.m., on Mondays and Wednesdays (June 15-July 11).

Second session class days and meeting times will be the same, with beginners starting on July 14 and advanced swimmers starting class July 13.

MONDAY EVENING SPECIAL

BEEF STEW WITH GARDEN FRESH VEGETABLES in Casserole

Choice of Green Vegetable

Rolls - Butter Tea or Coffee and

Choice of Mom's Pie or Cake

\$0.99

TUESDAY EVENING SPECIAL

BAKED MEAT LOAF WITH TOMATO SAUCE

Rolls - Butter Tea or Coffee and

Choice of any two vegetables

\$0.99

WEDNESDAY EVENING SPECIAL

CHICKEN FRIED STEAK WITH CREAM GRAVY

Rolls - Butter Tea or Coffee and

Choice of any two vegetables

\$0.99

THURSDAY EVENING SPECIAL

ITALIAN CANDLELIGHT DINNER

ITALIAN SPAGHETTI Served with

Spiced Meat Balls & Sauce

Parmesan Cheese Tossed Green Salad

Choice of Salad Dressing

Hot Garlic Bread Tea or Coffee

\$0.99

FRIDAY EVENING SPECIAL

OCEAN CATFISH FILET

Tarter Sauce Cole Slaw

Grandma's Cornbread

Rolls - Butter Tea or Coffee and

Choice of any two vegetables

\$0.99

SATURDAY SPECIAL

NOON AND EVENING GULF SHRIMP

Cocktail Sauce

French Fried Potatoes

Cole Slaw

Rolls - Butter Tea or Coffee

\$0.99

SUNDAY SPECIAL

NOON AND EVENING ROAST TURKEY DINNER

Served With

Cranberry Sauce

Cornbread Dressing

Rolls - Butter Tea or Coffee

Giblet Gravy

and your choice of any two vegetables

\$0.99

MSC Cafeteria

For your protection we purchase meats, fish and poultry from Government inspected plants.

Stock-Up Now... With 88 Savings!

Coca Cola
TAB - SPRITE - FRESCA

3 Plus Deposit \$1
6 Bt. Ctn.

THESE PRICES EFFECTIVE THURS., FRI., SAT., JUNE 4, 5, 6, 1970

WHITE GIANT - HOME GROWN
FRESH - EXTRA LARGE

EGGS
DOZ. **39c**

DELMONTE EARLY GARDEN SPINACH 5 15 OZ. CANS **88c**

DELMONTE SAUERKRAUT 5 1 LB CANS **88c**

STOKELY TOMATO JUICE 3 46-OZ. CANS **88c**

KLEENEX TISSUE 3 2 ROLL PACKS **88c**

NEW CROP STRAWBERRY PRESERVES 18 OZ. JAR **49c**

"DISCOUNT PRICES ON HEALTH & BEAUTY AIDS"

GLEEM TOOTHPASTE FAMILY SIZE TUBE **88c** LIST PRICE 1.05

RISE SHAVE CREAM 11 OZ. CAN **88c** LIST PRICE 1.19

ANACIN TABLETS 100 CT. BTL. **88c** LIST PRICE 1.39

PEPTO-BISMOL 8 OZ. BTL. **88c** LIST PRICE 1.09

DELMONTE CUT GREEN BEANS 4 1-LB. CANS **88c**

DELMONTE CREAM STYLE GOLDEN CORN 5 1-LB. 1-OZ. CANS **88c**

"FLAVORFUL MEAT SPECIALS"

PRO-TEN HEAVY BEEF SWISS STEAK ARM CUT LB. **88c**

LEO'S BREAST OF TURKEY OR CHICKEN 2 PKGS. **88c**

HORMEL'S SLICED BACON BLACK LABEL LB. **88c**

PRO-TEN BEEF RIB ROAST GIVEAWAY!
REGISTER AT OUR MEAT DEPARTMENT FOR ONE FREE WHOLE PRO-TEN HEAVY BEEF RIB TO BE GIVEN AWAY ON SATURDAY NIGHT, JUNE 6.

PRO-TEN HEAVY BEEF, BLADE CUT **CHUCK ROAST** LB. **48c**

PRO-TEN HEAVY BEEF:

BOSTON ROLLED ROAST	12.78c	KEY STRIP STEAKS	12.10c
RANCH STYLE STEAK	12.68c	SHOULDER ARM ROAST	12.68c
7-BONE ROAST	12.58c	IMPERIAL BROIL STEAK	12.98c
BONELESS RIB STEAK	12.10c	SAVOY BROIL STEAK	12.10c

ASSORTED LUNCH MEATS LEO'S 3 PACKAGES **98c**

MILD CHEDDAR CHEESE BONNIE BAKER LB. **79c**

FAMILY-PAC FRYERS
THE ABOVE CONTAINS:
2 BREAST QTRS. WITH BACK
2 LEG QTRS. WITH BACK LB. **29c**
2 PKGS. GIBLETS
2 WINGS

Shop and Compare PIGGLY WIGGLY'S Everyday Low Prices!

CLOROX BLEACH	1/2 GAL. BTL.	37c
HONEY BOY SALMON	TALL CAN	75c
LIBBY'S TOMATO JUICE	46 OZ. CAN	39c
REGULAR KOTEX	12 CT. BOX	41c
VAN CAMP'S PORK & BEANS	2 15 OZ. CANS	29c
HEINZ STRAINED BABY FOODS	4 3/4 OZ. JAR	7c
THIRST-QUENCHING LIPTON TEA	8-Oz. Pkg.	81c
DELMONTE PEACHES	1 LB. 13-3/4 CAN	29c
CARNATION INSTANT MILK	3 CT. BOX	89c
ARMOUR TREE T	12 OZ. CAN	54c

POTATOES US #1 IDAHO RUSSET 10 LB. BAG **88c**

CORN FLORIDA FANCY 12 FULL EARS **88c**

DELMONTE GREEN LIMA BEANS 3 1-LB. 1-OZ. CANS **88c**

DELMONTE PEELED TOMATOES 4 1-LB. CANS **88c**

CALIFORNIA SUNKIST VALENCIA ORANGES 2 4-LB. BAGS **88c**

MEXICO SUGAR LOAF PINEAPPLE 3 FOR **88c**

CALIFORNIA AVOCADOS 3 FOR **88c**

DELMONTE **FRUIT COCKTAIL** 4 1-LB. 1-OZ. CANS **88c**

DELMONTE **SWEET PEAS** 5 1-LB. 1-OZ. CANS **88c**

BONNIE BAKER **PEANUT BUTTER** 18 OZ. JAR **49c**

Lilly - Fresh **POTATOES** 3 1 1/2 Lb. Bags **88c**

BONNIE BAKER **BREAD** 3 1 1/2 LB. LOAVES **87c**

Lilly - Fresh **BUTTERMILK** 1/2 Gal. Ctn. **49c**

THE ORIGINAL SELF SERVICE

SOUTH TEXAS MOST MODERN SUPERMARKET SERVICE / SATISFACTION GUARANTEED / LOCATED AT

TEXAS AVE. & ROSEMARY BRYAN COLLEGE STATION TEX **TEXAS**
*QUANTITY RIGHTS RESERVED