

**F & F SALVAGE SALES**  
Class of '53  
(Previously C & D Salvage)  
Damaged and Unclaimed Freight  
All Types of Furniture  
We Buy and Sell Used Furniture  
Call 822-0605  
302 North Bryan Street

# Ralph's PIZZA



**EAST GATE**  
ALL YOU CAN EAT  
Monday Thru Thursday  
5-7 p. m. — \$1.25

**SMORGASBORD**



**TOP GRADUATE STUDENTS**—Joe Richard Tillerson (left) and Philip J. Gensler (right) have been honored by the Association of Former Students for academic excellence in the Graduate College. Dr. G. W. Kunze, Graduate College dean, is shown with the two men. Tillerson was honored as the top master's candidate and Gensler was named the top Ph.D. candidate of 1969-70.

## Child dramatics sign-up June

Registration for the first summer session of children's creative dramatics and the Premier Players will be held by the Theater Arts Section of the English Department June 1 and June 8.

Four age groups of creative dramatics will be taught in Bryan by Mrs. Aileen Wenck and in College Station by Mrs. Lugean Esten. Robert W. Wenck will direct the Premier Players, a high school theater program.

The purpose of Children's Creative Dramatics, said C. K. Esten, program director and director of the Aggie Players, is to get out of the child what he has innately, the ability to create something.

Registration for both first sessions is June 1 from 8 a.m. until noon. The session runs from June 8 until July 8 with 5-6 year olds meeting Monday, Wednesday and Friday from 10 to 11 a.m.; 7-8 year olds meeting Tuesday, Thursday and Friday from 10 to

11:30 a.m.; 9-10 year olds meeting Monday, Wednesday and Friday from 8 to 9 a.m.; and 12 year olds meeting Tuesday, Thursday and Friday from 8 to 9:30 a.m.

Registration sessions will be held in the Falk Theater the back of Guion Hall for College Station residents and in Bryan Civic Auditorium for Bryan residents.

Registration for the Premier Players first session will be from 8 to 5 p.m. in the Falk Theater.

Their first production, "Curious Savage," by Jon Peters will be presented July 11-12. "The Premier Players is a school production workshop which presents quality plays rather than those normally associated with high school groups," Wenck said. "Last year they did 'The Dwellers' by William Inge and took it to Austin for a quest performance."

Registration for Creative Dramatics in College Station while the Bryan School District pays the registration fee, Bryan residents.

"These registration fees cover initial expenses in the programs," Esten said. "All the money that comes in goes to the two teachers and buy supplies."

"Mr. and Mrs. Sophus Olsen Comfort, Tex., have donated for the second time to help maintain the Children's Creative Dramatics program here," Esten said. "Our objective is to try to get financial support from the university."

Esten added that any child in the area this summer may register for the program, whether parents are residents or not.



## SAFEWAY HAS THE LOW EVERYDAY PRICES & SPECIALS

Check These Safeway Frozen Food Low, Low Prices!

<b>Dinners</b> Banquet Assorted. Safeway Special! 3 Reg. Pkgs. \$1	<b>Waffles</b> Bel-air. Safeway Special! 11 5-oz. Pkgs. \$1	<b>Cut Corn</b> Birds Eye. Safeway Special! 5 10-oz. Pkgs. \$1
<b>Meat Pies</b> Manor House Assorted. Safeway Special! 6 8-oz. Pkgs. \$1	<b>Apple Pie</b> or *Cherry. Bel-air. Safeway Special! 3 1 1/2-Lb. Pkgs. \$1	<b>Sherbet</b> Lucerne. Party Pride. Assorted Flavors. Safeway Special! 1/2-Gal. Carton 59¢
<b>Lemonade</b> 4-oz. Can 10¢ <b>Orange Juice</b> 4-oz. Can 19¢ <b>Mexican Dinner</b> Circle T 14-oz. Pkg. 39¢ <b>Cream Pies</b> Assorted 14-oz. Pkg. 29¢ <b>Fried Chicken</b> Swanson's 2 Course 14-oz. Pkg. 77¢	<b>Quality Is Our Business</b> The finest products you can buy. You'll find a complete selection of your favorite frozen foods at your convenient Safeway Stores. Stock up now on these values and keep your freezer full of convenient, quality frozen foods.	<b>Jeno's Pizza Roll</b> with Sauce & Cheese 6-oz. Pkg. 67¢ <b>Macaroni</b> 12-oz. Pkg. 53¢ <b>Pound Cake</b> All Butter. Sara Lee 12-oz. Pkg. 79¢ <b>Turnovers</b> Raspberry. Pepperidge Farm 11-oz. Pkg. 49¢ <b>Onion Rings</b> French Fried. Mrs. Paul's 9-oz. Pkg. 51¢

Check These Safeway Low, Low Prices!

<b>Cane Sugar</b> 48¢ Candl Cone. Pure Cane —5-Lb. Bag	<b>Heinz Baby Food</b> 7¢ Assorted. Strained. *Fruits *Vegetables *Desserts —Reg. Jar
<b>Facial Tissues</b> Silk. Assorted Colors 150-Ct. Box 17¢ Why Pay 21¢	<b>Cheese Spread</b> Swiss. Imitation Process 2-Lb. Box 59¢ Why Pay 69¢
<b>Detergent</b> Parade. Washday Favorite! 49-oz. Box 49¢ Why Pay 59¢	<b>Cling Peaches</b> Highway. *Sliced or *Halves 29-oz. Can 27¢ Why Pay 29¢
<b>Toilet Tissue</b> A-1. White 4-Roll Pkg. 29¢ Why Pay 33¢	<b>Canned Milk</b> Lucerne. Evaporated 14 1/2-oz. Net Wt. 15¢ Why Pay 17¢

Variety & Quality... Always at Safeway!

**Boneless Roast** 78¢  
\*Chuck or \*Shoulder. USDA Choice Grade Heavy Beef. Waste-Free —Lb.

**Sliced Bacon** 69¢  
Slab. Rindless. Breakfast Treat! —Lb.

**Swift's Franks** 1-lb. Pkg. 69¢  
**All Meat Franks** Safeway 12-oz. Pkg. 55¢  
**Rath Bacon** \*Rath Black Hawk or \*Safeway Sliced 1-lb. Pkg. 85¢  
**Smorgas Pac** \*Eggs, \*Vegetables in Pkg. 1-lb. Pkg. 99¢

**Pork Chops** Quarter Sliced Pork Loin —Lb. 75¢  
**Smoked Chops** Pork. Center Cut. \*Loin or \*Rib —Lb. 99¢  
**Smoked Hams** \*Whole or \*Half. 12 to 18-Lb. Avg. —Lb. 63¢  
**Boneless Hams** Swift Premium Hamlets. Half Ham —Lb. \$1.39

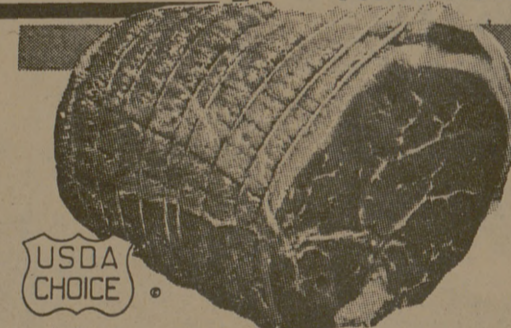
**USDA Inspected Grade 'A' FRYERS** 29¢  
Wholesale —Lb.  
Fryer Halves Cut From USDA Insp. Grade 'A' Fryer —Lb. 35¢  
Leg Quarters Cut From USDA Insp. Grade 'A' Fryer —Lb. 39¢  
Breast Quarters Cut From USDA Insp. Grade 'A' Fryer —Lb. 45¢  
4-Legged Fryers Cut-Up 2 Extra Boneless —Lb. 45¢  
Pinwheel Pack \*6-Drumsticks and \*4-Thighs —Lb. 65¢



OPEN SUNDAYS FOR YOUR SHOPPING CONVENIENCE. SAFEWAY IN TOWNSHIRE 9 A.M. TO 8 P.M.

Check These Safeway Big Buys!

<b>Salad Dressing</b> 37¢ Piedmont. Taste Tempting! —Quart Jar	<b>Saltines</b> 19¢ Melrose Soda Crackers —1-Lb. Box
<b>Charcoal</b> 59¢ Briquets. Grillit —10-Lb. Bag	<b>Cake Mixes</b> 25¢ Mrs. Wright's. Assorted —18 1/2-oz. Box
<b>Potato Chips</b> 49¢ Party Pride. Fresh & Crisp —Twin Pak	<b>Margarine</b> 8¢ Piedmont. A Light, Delicate Flavor —1/2-Lb. Patty



**USDA CHOICE**

<b>Chuck Roast</b> Made Cut. USDA Choice Heavy Beef —Lb. 55¢	<b>7-Bone Roast</b> or *Chuck Steak. USDA Choice Heavy Beef —Lb. 65¢
<b>Rib Steaks</b> USDA Choice Heavy Beef —Lb. 89¢	<b>Arm Roast</b> Full Cut. USDA Choice Heavy Beef —Lb. 75¢
<b>Short Ribs</b> USDA Choice Heavy Beef —Lb. 45¢	<b>Ground Chuck</b> Lean Beef —Lb. 83¢
<b>Ground Beef</b> Safeway Handy Chub Pak 2-Lb. Chub \$1.25	<b>Top Sirloin Steak</b> Boneless. USDA Choice Grade Heavy Beef —Lb. \$1.49
<b>New York Steak</b> Boneless Strip. USDA Choice Heavy Beef —Lb. \$1.99	<b>Fish Sticks</b> Pre-Cooked. Jumbo —Lb. 59¢
<b>Perch Fillets</b> Pre-Cooked —Lb. 65¢	

Garden Fresh Fruits & Vegetables!

**Lettuce** 19¢  
Large Crisp Heads. Salad Special! —Each

**Bananas** 25¢  
Top Quality! Economical 2 Lbs.

**Onions** 39¢  
Yellow. US No. 1 3-Lb. Bag

Save At Safeway!  
**Red Potatoes** 89¢  
US No. 1A Texas Grown. New Crop 10 Lb. Bag



**Bakery & Dairy Values!**  
**Rye Bread** 27¢  
Skylark. Regular. Special! —1-Lb. Loaf

**Buttermilk** 45¢  
Lucerne. Special! —1/2-Gal. Ctn.

**Flash Cubes** 89¢  
Norelco 3 Cubes, 12 Guaranteed Flashes 3-Ct. Pkg.

Check These Safeway Values!

**Chunk Tuna** 3 6 1/2-oz. Cans \$1  
See Trader. Light Meat

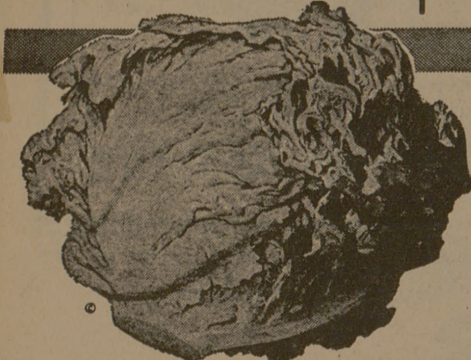
**Pork & Beans** 14¢  
Van Camp's 16-oz. Can Why Pay 16¢

**Catsup** 19¢  
Highway 16-oz. Bottle Why Pay 20¢

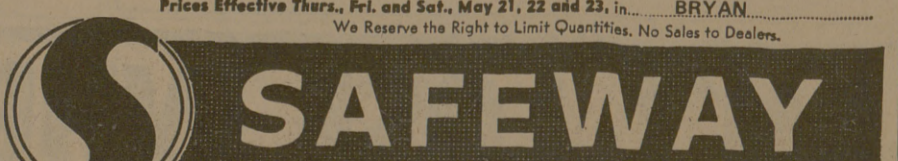
**Paper Napkins** 9¢  
Silk. Assorted Colors 60-Ct. Pkg. Why Pay 10¢

**Black Pepper** 33¢  
Trader Horns. Pure 4-oz. Can Why Pay 39¢

**Fabric Softener** 47¢  
White Magic 12-oz. Bottle Why Pay 55¢



**Blackeye Peas** Fresh —Lb. 29¢  
**Tomatoes** Cherry. Perfect for Salads Pkg. 29¢  
**Artichokes** Marinated. So Tasty 6-oz. Jar 49¢  
**Garlic** Small Pods for Seasoning 2-Ct. Pkg. 19¢  
**Fruit Juice** Passion Fruit Quart Dec. 59¢  
**Oranges** Valencia. California Fancy —Lb. 19¢  
**Grapefruit** Texas Ruby. No. 1 5-Lb. Bag 69¢  
**Sunkist Lemons** Large-Bask 4 for 29¢



**LORD JEFF**  
Country Squire  
TOWNSHIRE / BRYAN, TEXAS

Used Army Officer's Uniform. \$25 (Quarter Master)  
1 Tailor-made Greer Uniform \$49  
2 Set Army Dress Blues \$79 each  
Perfect Condition  
**LOUPOT'S**

**PALACE**  
Bryan 2-8879  
NOW SHOWING  
1:30 - 3:30 - 5:30 - 7:30 - 9:30  
Natalie Woods In "BOB, CAROL TED & ALICE" (Rated X)

**CAMPUS**  
NOW SHOWING  
1:30 - 3:30 - 5:30 - 7:30 - 9:30  
"THE LAWYER" (Rated X)

**SKYWAY DRIVE-IN THEATRE**  
WEST SIDE AT 8:30 P. M.  
"SKULL DUGGERY" With Susan Clark At 10:40 p. m. "TOPEZ"  
EAST SIDE AT 8:20 P. M.  
"BARQUERO" With Lee Van Cleif At 10:30 p. m. "GREAT ESCAPE" With Steve McQueen

**CIRCLE**  
TONITE AT 8:30 P. M.  
"DOWNHILL RACERS" With Robert (Sundance) Redford At 10:40 p. m. "NEVADA SMITH" With Steve McQueen