

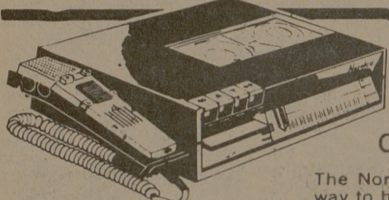


For all your insurance needs
See U. M. Alexander, Jr. '40
221 S. Main, Bryan
823-0742



State Farm Insurance Companies - Home Offices Bloomington, Ill.

efficient executive's best friend



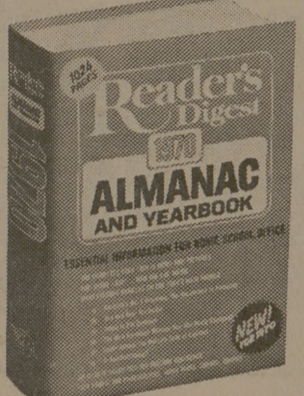
the
Norelco 84
dictating machine

- Automatic and Easy to Use
- Remote Controlled
- Reusable Magnetic Tape
- Easy Transcription

The Norelco 84 is the modern efficient way to handle daily correspondence. Its simplicity of operation assures perfect dictating results every time. You'll like the Norelco 84's low price and many features like the exclusive magnetic tape cassette that threads itself automatically. Find out how the Norelco 84 can be your best friend. Call today for a demonstration.

OTIS McDONALD'S
429 S. Main — Phone 822-1324
Bryan, Texas

Special rate for college students



The indispensable reference volume... Reader's Digest 1970 Almanac and Yearbook! All answers to Who? Which? What? When? Why? How? Where?

Yours at the special student rate of only... **\$2.98** (plus shipping)

Offered in bookstores for \$3.95. Order cards located in college bookstore. Send no money now. Mail your card today.

© 1970, THE READER'S DIGEST ASSOCIATION, INC.

Metcalfe Says Team Needs Improvement

By Richard Campbell
Coach Shelby Metcalfe was not too enthusiastic about his varsity's performance Monday night against the Aggie Fish and offered but one good point about the Aggies since practice started Oct. 15.

"No one has been hurt since we started practicing seven weeks ago," the Aggie cage mentor commented. "That's about the only thing good to come of it."

Metcalfe talked with newsmen Tuesday afternoon in the Let-

erman's Lounge in G. Rollie White to critique his squad's play in preparation for the Aggies' 8 p.m. opener Thursday against the Northwestern Louisiana State Demons. Fish coach Jim Culpepper was also present to evaluate his team's progress.

Although the varsity emerged on the top side of a 73-58 score, Metcalfe was not really pleased with their overall play.

"Our shooting was about the only part of our game that was up to par. I don't believe that our new players (sophomores) are tough enough both mentally and physically to win. They just don't realize yet what it takes to compete in the conference."

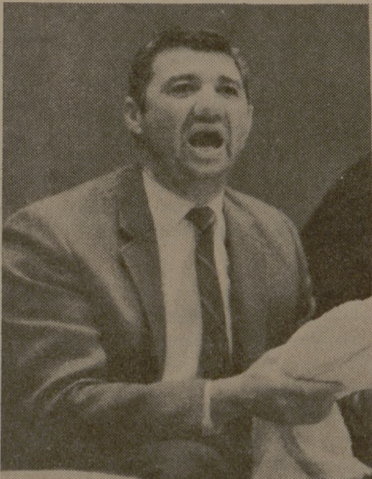
Metcalfe also mentioned that he was glad to be going on the road to play in three tournaments before conference play opens Jan. 6.

"Success in the Southwest Conference depends on the improvement that the team makes in the month of December. Last season our players seemed to jell as a team during the All-College Tournament."

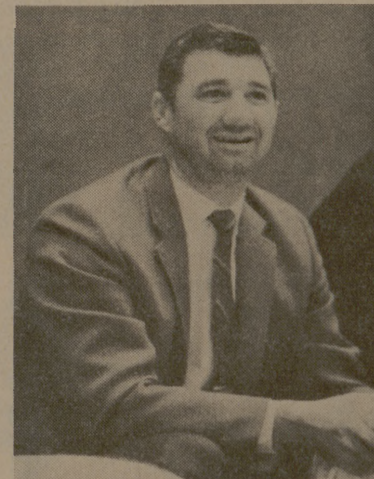
"I like the tournaments because of the national recognition and the gifts which the players receive," Metcalfe continued. "I guess that we (A&M) are be-

coming more respected in basketball because we are not playing the host teams in any of our tournaments this year. Usually the host team will pair itself with a team it thinks it can beat in the first round."

Obviously the big improvement this season will have to come from the sophomores and from the Aggies' big men, Steve Niles and Rick Duplantis, who were not impressive on the boards against the shorter Fish. The Fish took down 48 rebounds to 46 for the varsity.



INSTRUCTION



OBSERVATION

on the whole, against the SWC champs.

"We got good performance from several of our players (Jeff) Overhouse, (B) Gaud and (Wayne) Howard all pretty well."

He had special praise for in even though he admitted it was not one of his best scrimmages.

"Gobin is a real smooth hander," Culpepper said, "but is the best all-around player this stage in the year that I coached since I've been here."

The Demons will counter with an experienced squad of four returning starters from a 16-13 team. Charles Bloodworth will be the big man for the Demons, who earlier this week dropped a 96-90 decision to North Texas State.

"It was a two-point game with only 30 seconds left," Metcalfe said, "but North Texas made two free throws and a long jump shot to pull away from Northwestern."

Bloodworth, a 6-8, 240-pounder at post, will be joined in the Demons starting five by senior guard Doug Watts, who led them in scoring against North Texas. The other guard will be junior John Janese, a 6-1 speedster, and forwards Jerry Masters and Carlton Wadding, both 6-3, round out the starters.

Culpepper seemed pleased with the performance of his players,

DESPAIR

Aggie Fish Face Blinn Tomorrow Night

By Mike Wright
Assistant Sports Editor

The Texas Aggie Fish basketball team opens its regular season tomorrow night against the Blinn Bucs in the preliminary game before the varsity encounter Northwestern Louisiana State.

Fish coach Jim Culpepper will likely start the quintet of Bill O'Brien at point, Jeff Overhouse and Bryan Mezger at the posts position, with Bob Gobin and

Wayne Howard at the forwards.

This year's team does not have the exceptional height but all members are well blessed with muscle and a degree of quickness. They have the ability to overpower any opponent who will cross their path. This fact was driven home in Monday night's scrimmage against the Varsity as the Fish out rebounded the upper classmen 48-46.

Overhouse, 6-6, from Clear Creek guarded the Aggie's Steve

Niles with ease to be among the Fish drawing praise for their effort. Overhouse was all-district for two years, as Clear Creek won their 15th, 16th, and 17th straight district titles.

At the other post slot, Mezger also brings two years of all district honors to Aggie land from Marble Falls.

Bill O'Brien, of Houston Memorial, was introduced to the floor of G. Rollie White last spring as he helped lead the Mustangs

to a victory in the regional tourney.

Gobin hails from Perryton where he was all-district, all state and All American in basketball. He was also all district and all south-plains in football. He was named to the SWC Blue Chip list by the coaches in both sports.

Howard, also a Houston Memorial lad, was named Most Valuable Player in Memorial's tough district. He played in two all-

star games, was all district two years, and in his senior

all state and All-American.

Other players on the Fish team include Ronnie Jagger, DeKalb, Charlie Jenkins of Worth, Ron Eeten of San Antonio, Mark Wientes of Antonio, Lee Murphy of Houston, Bill Bone of Albuquerque, N. M. Although these players are not in the starting line up, there's talent in the group. Defensive will most likely break in Larry Stalback from

Culpepper is being assisted by Roddy McAlpine, with training by Juarez of New York City. Bruyding the manager duties for Under, both in. Both On defense 10, 210, the defer

Seconds Meat Racing Wins

One second is not very long in most people's work day. However, a single second may determine the winner of the Texas 500 race at the Texas International Speedway Sunday.

Cale Yarborough of Timonville, S.C., is well aware of importance of a second from days as an all-state football high school, through the time enjoyed sky-diving as a hobby and even more now as one of the top drivers in the elite National Division of the NASCAR Association for Stock Car Racing (NASCAR).

Yarborough measures work — driving a 1969 Mustang — in tenths, hundredths or thousandths of a second. His task to cover the two-mile high speed asphalt oval of Texas International Speedway in the least possible time for the full 500 miles.

The blond, stocky professional race driver is not alone in battle of time. Yarborough enjoys the service of the Wood Brothers, from Stuart, as his car builders and pit crew. The Woods, headed by Wood, himself a former top car servicers on earth.

In a special contest last year they were electrically timed and required only 18.72 seconds to change both right side tires and fill the tank with gas.

Wood Brothers crew has been unofficially clocked in races and performed the same tasks in as little as 17.0 seconds.

"I figure my crew will give me an advantage in Texas 500," says Yarborough. "We will be running in the at speeds of about 170 miles per hour. This means we're traveling about 250 feet per second. I have won several races in a lot less than 250 feet. If Mercury is running the speed as the Fords and Datsuns then the difference will be in pit stops. If we can be a second quicker in the pits, then we've gained distance on the track," Yarborough explained.

Most experts look for a minimum of seven pit stops during the \$93,150 race on December 6, an outlook that will add significance to the ability to speed of the pit crews.

Tickets are available at Texas International Speedway ticket office Highway 6 South College Station, Texas, 77805 and at ticket outlets throughout the state.

Low Prices Everyday!

Chunk Tuna Light Meat. Sea Trader. **4** 6 1/2-oz. Cans **\$1**

Mixes Pillsbury. Assorted. **3** Reg. Pkgs. **\$1**

Del Monte Early June. Green Peas. **5** 17-oz. Cans **\$1**

Save at Safeway!

Vienna Sausage Libby. **5** 4-oz. Cans **\$1**

Applesauce Highway. Great for Desserts! **6** 16-oz. Cans **\$1**

Cheerios General Mills. **3** 10 1/2-oz. Boxes **\$1**

Shop & Compare!

SAVE ON MEATS!
At Safeway, you get only USDA Choice Heavy Beef and Lamb at Low Prices Every Day. This is meat graded by US Department of Agriculture experts; the Choice grade goes only to meat which is tender, juicy, flavorful. All Safeway meats are trimmed waste-free and guaranteed to please or money back!

SAVE ON PRODUCE!
You always get the best and freshest produce at your Safeway Store. And it's priced as low as the market allows. Our buyers are stationed in every important producing area. They buy the best and rush it here. We sell it at Low, Low Prices every day.

SAFEGWAY DOLLAR SALE!

Shop Safeway for Variety & Quality Meats!

Round Steak
Full Cut. USDA Choice Grade Heavy Beef (Boneless —Lb. 98¢) —Lb. **87¢**

Boneless Roast *Chuck or *Shoulder. USDA Choice Grade Heavy Beef —Lb. **88¢**

Bananas
Golden Ripe. No. 1 Quality! Special at Safeway! —Lb. **10¢**

Walnuts *Large or *Jumbo Size —Lb. **59¢**

Christmas Trees!
*Scotch Pine
*Douglas Fir
Make your selection early **\$1.29 and Up**

Fresh Fruits & Vegetables!

Cream Pies Bel-air. Assorted Flavors Safeway Special! **4** 14-oz. Pkgs. **\$1**

Orange Juice Scotch Treat, From Florida. —4-oz. Can **18¢** **5¢ OFF Each Package of Glace Fruits (Your Choice)**

Bel-air Big Buys!

5 16-oz. Cans \$1	Cut Corn Whole Kernel 2-Lb. Bag 55¢
5 16 1/2-oz. Cans \$1	Mixed Vegetables 2-Lb. Bag 57¢
3 Reg. Pkgs. \$1	Green Peas 2-Lb. Bag 53¢
	French Fries Potatoes 2-Lb. Bag 43¢

SAFEGWAY