

'New' Aggies Invade Rice Owls' Nest

By Richard Campbell
Battalion Sports Editor

A revamped Texas Aggie football team takes a short trip this Saturday in hopes of grabbing one of their big wins of 1969 when they invade Houston for the always tough clash with the Rice Owls at 2 p.m. in Rice Stadium.

Now standing 3-5 for the year, the Cadets have convinced the experts that their preseason pick of seventh in the Southwest Conference won't hold water. Of course, this proof may have been a little late in coming but it has arrived nevertheless. After a shaky start, the Aggies have won two of their last three including a strong showing against fourth-ranked Arkansas Razorbacks.

The young charges of Coach Gene Stallings have finally begun to come up with the big play at

the right time and that is the story of winning college football. Before the 20-10 thumping of the SMU Mustangs last week, the Aggies had been playing well enough to win but couldn't come up with the big play when it counted. Now the picture promises to be different and the Rice Owls will be the first team to test the big play magic to make sure it was not a fluke.

The Owls, however, have not exactly struck fear into the hearts of their opponents this year and the oddsmakers have given the Aggies a ten-point edge. On the way to a 1-6 record and 0-4 conference mark the Owls have not been without bright spots. Quarterback Stahl Vincent, the first negro signal-caller in the SWC, has rounded into top form and promises to give the Aggie defense a tough chore.

He has hit 42 of 80 for 465 yards and three touchdowns but he has been more effective scrambling this year with 189 yards to lead the Owl rushers. The Owls have six runners with over 100 yards for the year but they lost their best runner, big Tony Conley, who is now out for the year with a knee ailment. Injuries have nagged the Rice defensive unit especially their linebackers, where standout end Rodrigo Barnes had to play last week. Still, the Owls led Texas Tech 14-0 two weeks ago and played Arkansas to a first standoff last week before falling 30-6.

Last year's game, which the Aggies finally won 24-14, opened like a raging forest fire with A&M scoring on its first three possessions and Rice on its first two to register a wild 21-14 read-

ing after the first quarter. But A&M has a 28-22 edge with three ties in the series.

There will be five Aggie seniors who will be making their final appearance in A&M uniforms in their hometown of Houston. They are: center Jack Kovar, tailback Larry Stegent, wingback Jimmy Adams, linebacker Mike Caswell, and defensive back Jack Whitmore.

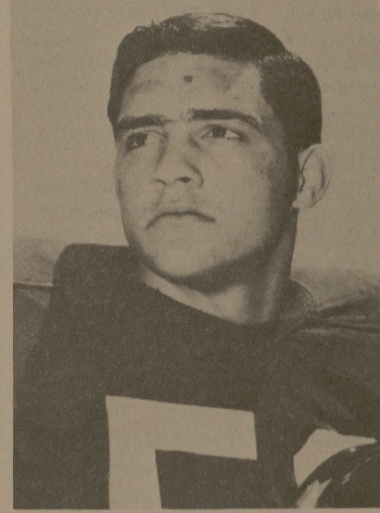
Quarterback Rocky Self has taken the now-potent Aggie offense for the last two games and marched them for a touchdown on their first possession. He seemingly found the passing groove against the Ponies last week with a nine for 16 showing and the Aggie ground game offset the passing perfectly with sophomore Steve Burks ripping off 100 yards on only four carries to lead the overland route.

Larry Stegent, the 6-1, 198-pound tailback is still the number three rusher in the SWC with 541 yards and fullback Marc Black has 199 yards on 56 carries to provide much of the Aggies' octane on the ground. Self has now hit on 79 of 171 for 1041

yards and five touchdowns, all to tight end Ross Brupbacher.

Barney Harris is the top Cadet receiver with 30 catches for 441 yards with Brupbacher second with 20 grabs for 369 and Stegent and Black have each caught 11.

Jimmy Sheffield has moved to within one-tenth of a percentage point of second place in punting with a 40.5 average on 59 kicks.



JACK KOVAR

ATTENTION ALL CLUBS

Athletic
Hometown
Professional
and
All Campus
Organizations.

Pictures for the club sections of the 1970 Aggieland are now being scheduled at the Student Publications office.

216 Services Bldg.

TIME

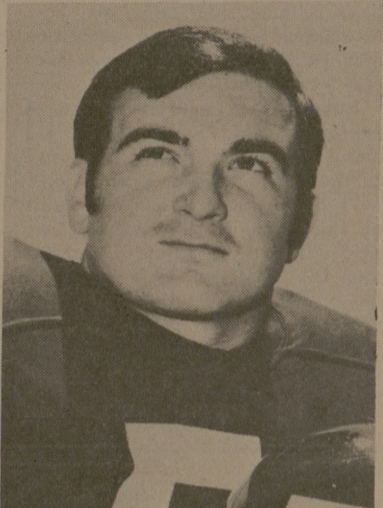
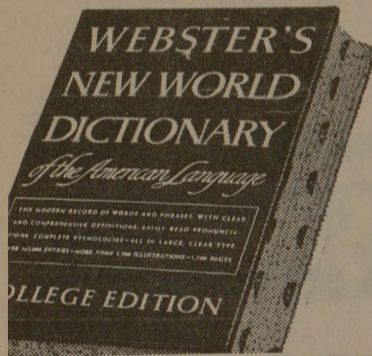
The longest word in the language?

By letter count, the longest word may be *pneumonoultramicroscopicsilicovolcanocentosis*, a rare lung disease. You won't find it in Webster's New World Dictionary, College Edition. But you will find more useful information about words than in any other desk dictionary.

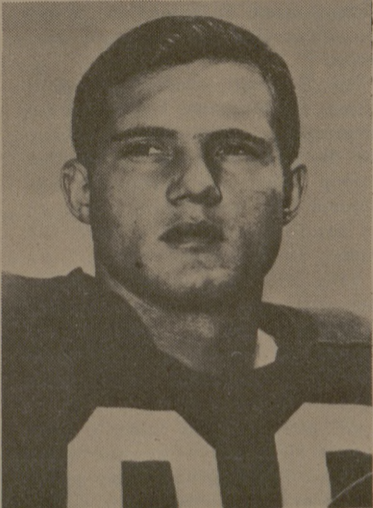
Take the word *time*. In addition to its derivation and an illustration showing U.S. time zones, you'll find 48 clear definitions of the different meanings of *time* and 27 idiomatic uses, such as *time of one's life*. In sum, everything you want to know about *time*.

This dictionary is approved and used by more than 1000 colleges and universities. Isn't it time you owned one? Only \$6.50 for 1760 pages; \$7.50 thumb-indexed.

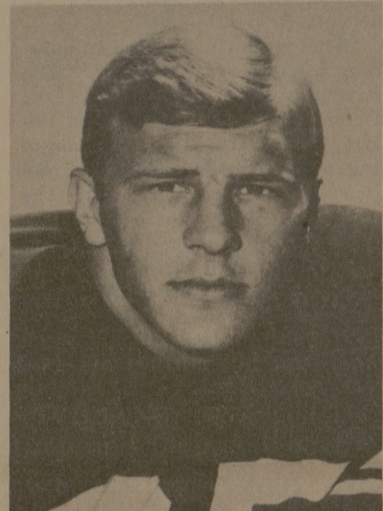
At Your Bookstore



MIKE CASWELL



JIMMY ADAMS



LARRY STEGENT



JACK WHITMORE

Ag's Hoot Aims To Haunt Owls

Texas A&M sports quiz: Which defensive secondary player from Houston is also an outstanding baseball player and has played three different positions for the Aggies this year? Clue: His first name is David.

No, it's not Dave Elmendorf. The Aggies have come up with another ballhawk from Houston,

but this one is only a sophomore . . . his name is Hoot.

The similarities between the two are great, and that's not bad. Hoot stands 6-2 and weighs 190, about the same size as Elmendorf. Hoot has intercepted passes in crucial situations this year, as has Elmendorf. Both were all-city outfielders. Hoot at Reagan, Elmendorf at Westbury.

As an All-SWC freshman on A&M's 5-0 Fish team last year, Hoot led the team in interceptions with three in five games.

Hoot is an all-round athlete in the mold of Elmendorf. During his high school career, Hoot was all-city and all-zone in football, baseball and basketball. In baseball he hit .606 in American Legion ball and averaged .395 for three years. He scored 600 points in basketball his senior year and once scored five touchdowns in a football game.

The Church.. For a Fuller Life.. For You.



The Bennetts live here. That's Grandmother Bennett's Bible on the window sill, and the whole family goes to the church across the snow covered field.

John Bennett works in the local bank. Martha, his wife, is president of the PTA, and they have three lovely children. Grandmother Bennett has been living with them for the past couple of years, since she broke her hip. She can't always get to church in wintertime and that's why she calls this her window. When she can't be in church, it helps to be able to see it.

To her, the church steeple represents a great many things, and brings back many memories. Her son was married in that church. Her husband was buried in it. Her grandchildren were christened in it.

The Church has helped her to bear grief, in hours of sorrow; and it has seemed to put a benediction upon her happiness, in times of joy. Most important of all, whatever the occasion, whatever the crisis . . . the Church has always been there.

To Grandmother Bennett, the most comforting thing in the world is knowing that it always will be there.

Scriptures selected by the American Bible Society Copyright 1969 Keister Advertising Service, Inc., Strasburg, Va.

	Sunday	Monday	Tuesday	Wednesday	Thursday	Friday	Saturday
	John 3:22-30	John 3:31	John 4:7-26	John 4:27-42	John 4:43-54	John 5:1-18	John 5:19-29
	(C1) + (C2)	(C1) + (C2)	(C1) + (C2)	(C1) + (C2)	(C1) + (C2)	(C1) + (C2)	(C1) + (C2)

CALENDAR OF CHURCH SERVICES

ST. THOMAS EPISCOPAL	CHURCH OF THE NAZARENE	ST. MARY'S CATHOLIC
906 Jersey Street, So. Side of Campus Rector: William R. Oxley Asst.—Rev. Wesley Seeliger 8:00 A.M. & 9:15 A.M. Sunday Services	9:45 A.M.—Sunday School 10:45 A.M.—Morning Worship 6:30 P.M.—Young People's Service 7:00 P.M.—Preaching Service	Sunday Masses—7:30, 9:00 and 11:00 A.M. 7:00 P.M.
	CHRISTIAN SCIENCE SOCIETY	FAITH CHURCH UNITED CHURCH OF CHRIST
	9:30 A.M.—Sunday School 11:00 A.M.—Sunday Service 11:00 A.M.-2 P.M.—Tues. Reading Rm. 7:00-8:00 P.M.—Wed., Reading Room 8:00 P.M.—Wed. Evening Worship	9:15 A.M.—Sunday School 10:30 A.M.—Morning Worship 7:30 P.M.—Evening Service
	A&M CHURCH OF CHRIST	COLLEGE HEIGHTS ASSEMBLY OF GOD
8:00 & 10:00 A.M. Worship 9:00 A.M.—Bible Study 5:15 P.M.—Young People's Class 6:00 P.M.—Worship 7:15 P.M.—Aggie Class 9:30 A.M.—Tues. Ladies Bible Class 7:15 P.M.—Wednesday Bible Study	FIRST BAPTIST	9:45 A.M.—Sunday School 11:00 A.M.—Morning Worship 6:30 P.M.—Young People's Service 7:30 P.M.—Evening Worship
	UNIVERSITY LUTHERAN (Missouri Synod)	A&M METHODIST
9:30 A.M.—Bible Class 10:45 A.M.—Divine Worship 7:35 P.M.—Wednesday Vespers 6:30 P.M.—Worship Celebration Sunday Evening	SECOND BAPTIST 710 Eisenhower	9:45 A.M.—Sunday School 10:55 A.M.—Morning Worship 5:30 P.M.—Campus & Career Class 5:30 & 6:30 P.M.—MYF Meetings
	UNITARIAN FELLOWSHIP	CHURCH OF JESUS CHRIST OF LATTER DAY SAINTS
305 Old Highway 6, South Pres. Willis Peguegnat 10:00 A.M.—Sunday School 7:00 P.M.—Adult Services	OUR SAVIOUR'S LUTHERAN	28th East and Coulter, Bryan 8:30 A.M.—Priesthood meeting 10:00 A.M.—Sunday School 5:00 P.M.—Sacrament Meeting
	8:30 & 10:45 A.M.—The Church at Worship 9:30 A.M.—Bible Classes For All Holy Communion—1st Sun. Ea. Mo.	FIRST CHRISTIAN CHURCH Homestead & Ennis
	A&M PRESBYTERIAN	9:45 A.M.—Sunday School 10:50 A.M.—Morning Worship 6:30 P.M.—Young People
7-9 A.M.—Sun. Breakfast—Stu. Ctr. 9:45 A.M.—Church School 11:00 A.M.—Morning Worship 6:00 P.M.—Sun. Single Stu. Fellowship 7:15 P.M.—Wed. Student Fellowship 6:45 A.M.—Fri. Communion Service Wesley Foundation	CENTRAL CHRISTIAN CHURCH 3205 Lakeview	GRACE BAPTIST CHURCH 2505 S. College Ave., Bryan An Independent Bible Church
	9:45 A.M.—Bible School 10:45 A.M.—Morning Worship 6:00 P.M.—Youth Hour 7:00 P.M.—Evening Worship	9:15 A.M.—Sunday School 11:00 A.M.—Morning Worship 7:30 P.M.—Evening Worship

ATTENTION—All Seniors and Graduate Students

Schedule for Pictures for 1970 Aggieland

J-K-L—NOV. 17 - NOV. 21
M-N-O—DEC. 1 - DEC. 5
P-Q-R—DEC. 8 - DEC. 13
S-T-U—JAN. 5 - JAN. 9
V-W-X-Y-Z—JAN. 12 - JAN. 16

Make-Up Pictures at any time

CIVILIANS: Coat and Tie
CORPS SENIORS: Uniform - Class A Winter - Blouse or Midnights

Pictures will be taken from 8 a. m. to 5 p. m.

BRING FEE SLIPS

University Studio

115 North Main North Gate Phone: 846-8019

Hillier Funeral Home



BRYAN, TEXAS
502 West 26th St.
PHONE TA 2-1572

Campus and Circle Theatres
College Station

College Station's Own Banking Service
University National Bank
NORTH GATE

Sure Sign of Flavor



SANITARY Farm Dairies

Central Texas Hardware Co.
BRYAN

HARDWARE
CHINAWARE
CRYSTAL
GIFTS

Lilly

ICE CREAM AND MILK

The Exchange Store

"Serving Texas Aggies"



BRYAN BUILDING & LOAN ASSOCIATION