

TMA's Philbrick Elected U.S. Propeller Club VP

Capt. Alfred R. Philbrick, executive officer at the Texas Maritime Academy, has been elected a national Vice President of the United States Propeller Club of the United States. Philbrick is in charge of Student Affairs at the academy.

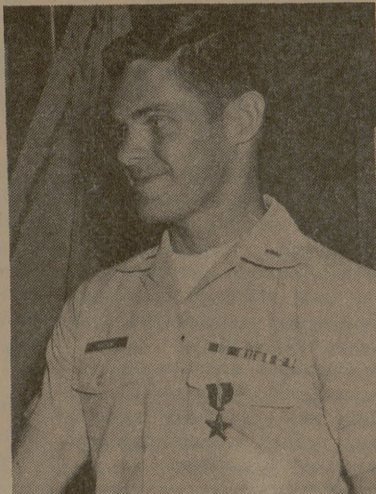
The Propeller Club of the United States is composed of over 100 local organizations in every state in this country and ten other countries throughout the world. The primary goals of the club are to "promote, further and support the American Merchant Marine and to aid the development of river, Great Lakes and harbor improvements."

Philbrick, head of the Department of Marine Transportation at TMA and also commanding officer of the training ship Texas Clipper, will have direct responsibility for the development and improvement of the Student Ports of the Propeller Club of the United States including student ports at the Bernard M. Baruch College of City University of New York, Georgetown University, Pacific Lutheran University, Webb Institute of Naval Architecture, San Francisco State College, U. S. Merchant Marine Academy, University of Pennsylvania, University of Florida, University of

Maryland, Portland (Oregon) State College and the five State Maritime colleges of Maine, Massachusetts, New York, California and Texas.

Philbrick is faculty advisor to the Propeller Club of the U. S. Port of Texas Maritime Academy of Texas A&M. As a national vice president, Philbrick is also a member of the National Board of Governors of the Propeller Club of the United States.

Present enrollment in the Port of Texas Maritime Academy is 80 students under the presidency of Mike Cordasco, senior marine transportation major. TMA is the third largest student port.



LOUIS G. HORN

Bronze Star Won by Horn

Air Force Capt. Louis G. Horn, 1966 A&M graduate and son of Mr. and Mrs. Louis J. Horn, 820 South Rosemary in Bryan, has been awarded the Bronze Star for meritorious service in Vietnam.

Horn was recently promoted to captain and appointed a regular officer.

In addition to the Bronze Star, Captain Horn has also been awarded the Airman's Metal for heroism involving voluntary risk of life in the rescue of 42 survivors in the crash of a Taiwan jetliner.

Off The Record by Gary McDonald

KEEP ON MOVING—
Butterfield Blues Band

Paul Butterfield learned his trade from the masters. He and his band, who were later to accompany him on his first album, spent time around the blues clubs of Chicago learning from the blues masters of the day and absorbing influences like the proverbial "old time blues."

His first album bears witness to this. It was a splendid collection of standard blues tunes featuring excellent soloists including himself, Mike Bloomfield and Mark Naftalian. With the help of a fellow Chicago bluesman, Nick Gravenites, their next album was heavily into improvisation music, hence the title "East Side Story." Before the third album was made there were numerous personnel changes. Bloomfield left and Butterfield supplemented the band with horns which seemed to be a revolutionary step at the time. Al Kooper was in the process of getting Blood, Sweat, and Tears together. In an effort to reach the public with his new sound of music ahead of or at least simultaneously with Bloomfield's.

field and Kooper, his third album was recorded prematurely. The new band had not had enough time to work things out right and it showed. The band did not jell until the release of their fourth album, "In My Own Dream." It is the definitive Butterfield with horns album. In this, their fifth album, Butterfield has evolved even further. The basic 12-bar blues structure has all but disappeared. In its place is a sound closer to that of soul recordings from Stax and to that of Chicago blues. Of course, the motivation remains unchanged. It's the blues.

"Keep On Moving" suffers from being repetitious. All the arrangements sound alike. It takes quite a few listenings before the tunes assume an individual identity. After one is able to distinguish one song from another, however, there's some excellent music to discover. "Love Disease" and "Where Did My Baby Go" are good raucous quasi-blues rockers featuring strident horn and guitar solos, respectively. "Keep On Moving" and "Except You" are poignant ballads. "Walking By Myself" is an adequate cover of the old Jimmie Rodgers classic and "Losing Hand" is a powerful blues number in the tradition of "Just to Be With You" from the last album. In fact, all the songs are enjoyable or at least have some

redeeming quality to them. It's the sameness when taken as a whole that makes the album suffer.

Butterfield's new album will scarcely revolutionize the world of popular music. It's not really a necessity for the popular music aesthetic. It is good, and is of crucial value to pop music, particularly blues music, anthologists.

PALACE
Bryan 2-8879

STARTS TODAY
"WHATEVER HAPPENED TO HUNT ALICE"

QUEEN

LAST NITE — 7:15-9:15
ADULT ART SERIES
"JULIE IS NO ANGEL"

CAMPUS

STARTS TODAY
Tony Curtis
In

"ON THE WAY TO THE CRUSADES I MET A GIRL WHO ???"

CIRCLE

TONITE AT 6:15 P. M.
John Wayne
In

"THE UNDEFEATED"

At 8:30 p. m.
"FLIM - FLAM MAN"

With George C. Scott

SKYWAY DRIVE IN THEATRE

WEST SIDE
At 6:15 p. m.

"SPEED LOVERS"

At 8:23 p. m.

"HELL ON WHEELS"

EAST SIDE
At 6:15 p. m.
"TEENAGE PSHCHOVS BLOODY MARY"

At 8:30 p. m.

"DRACULA HAS RISEN FROM GRAVE"

Tonight on KBTX

- 6:30 Glenn Campbell
- 7:30 Beverly Hillbillies
- 8:00 ABC Wednesday Night Movie "Rage"
- 10:00 TX Final News
- 10:30 It Takes A Thief
- 11:30 Richard Diamond



MSC Schedules Checker Tourney

Texas A&M will host the Southwestern Open ACF Checker Tourney Saturday and Sunday at the Memorial Student Center.

Registration starts at 6 p.m. Friday, with play beginning at 9 a.m. Saturday.

The entry fee is \$5. Top prize is \$100 and a trophy, with other monetary prizes given for place winners.

"The Southwestern is one of the most rugged tourneys held in the United States each year."

The tournament is open to all American Checker Federation (ACF) members and A&M students, reports tournament committee member Bob Cullen of College Station.

Among the competitors will be Dr. H. L. Cravens Jr. of Howard Payne University, 20 times Texas champion and five times Southwestern champion. Dr. Cravens is rated among the top five checker masters of the world.

Others include Maj. John J. Caldwell Jr., New Mexico state champion and rated one of the top eight checker masters of the world; G. C. Bailey of Cleveland, Tex., American major tourney champion and a former Texas match champion; Rupert Boeselt, former Southwestern and Texas state champion; A. H. Tate, former American correspondence checker champion; Albert Tucker, Louisiana champion, and Bob Niner, Oklahoma champion and rated among the top eight masters of the world.

Cole-Haan
SHOES
Iva Starnes
university men's wear
329 University Drive 713-846-2704
College Station, Texas 77849

Would You Believe?
Fresh From The Gulf
OYSTERS
on the half-shell
or fried to order
Served Right Here on the Campus

5 to 7 each evening at the famous Oyster Room MSC Cafeteria

FRESHMEN

Proofs of Pictures Must Be Returned to University Studio
By November 15.

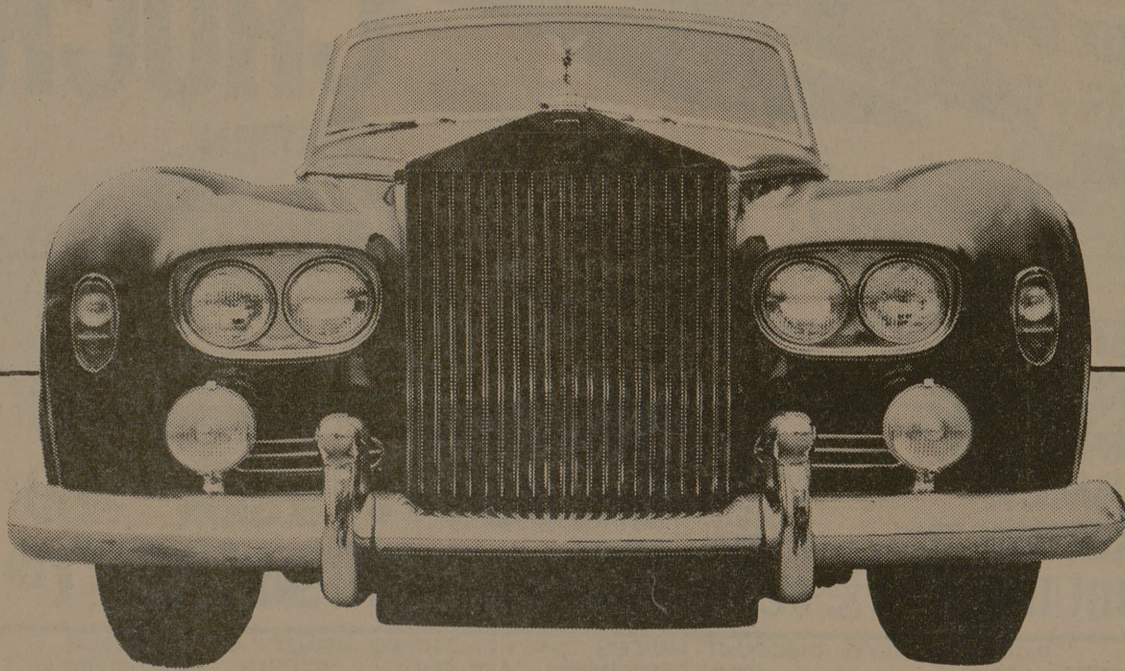
TONIGHT

BIG TRAVEL PLANS THIS SUMMER?

we'll help you make some ...

see SWEDEN
POLAND
AUSTRALIA
and AGGIES who've been there ...

WEDNESDAY NITE, NOVEMBER 12
8:00 pm MSC Assembly Room



Some values speak for themselves.

In most cases, however, it's wise to take a good, long look at what you are buying before you make a financial commitment. Texas Life is vitally interested in your financial program now and for many years to come. We feel our plan for young executives is second to none. However, before you sign with us, we make certain you know what you are signing ... for how much ... for how long ... and for what benefits. We encourage you to be cautious with your signature. Start now making your name your bond!

WRITE FOR OUR INTERESTING AND INFORMATIVE BOOKLET, "BEFORE I SIGN," DESIGNED ESPECIALLY FOR COLLEGE SENIORS AND GRADUATE STUDENTS



TEXAS LIFE INSURANCE COMPANY

P. O. BOX 830 WACO, TEXAS 76703

118 EAST WALTON
COLLEGE STATION, TEXAS 77840
Phone: 713-846-6244

