

# Work On Bonfire Reflects Spirit...

There is no finer indication of the true Aggie spirit than the Aggie Bonfire, which symbolizes "every Aggie's burning desire to beat Texas on Thanksgiving day and the flaming loyalty he has for A&M."

Each bonfire is considered that of the freshman class that builds it. The fish furnish most of the manpower, though seniors and juniors oversee cutting, trucking and stacking. The fish hook arms under short saplings on which

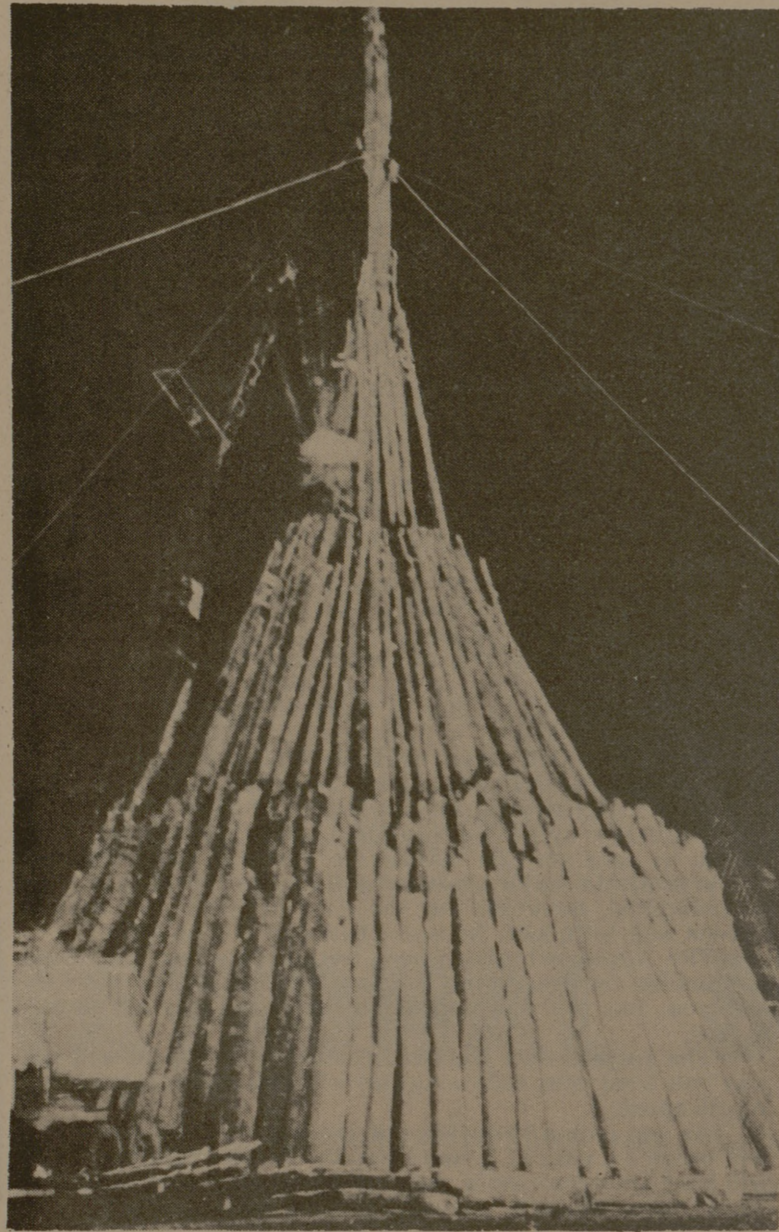
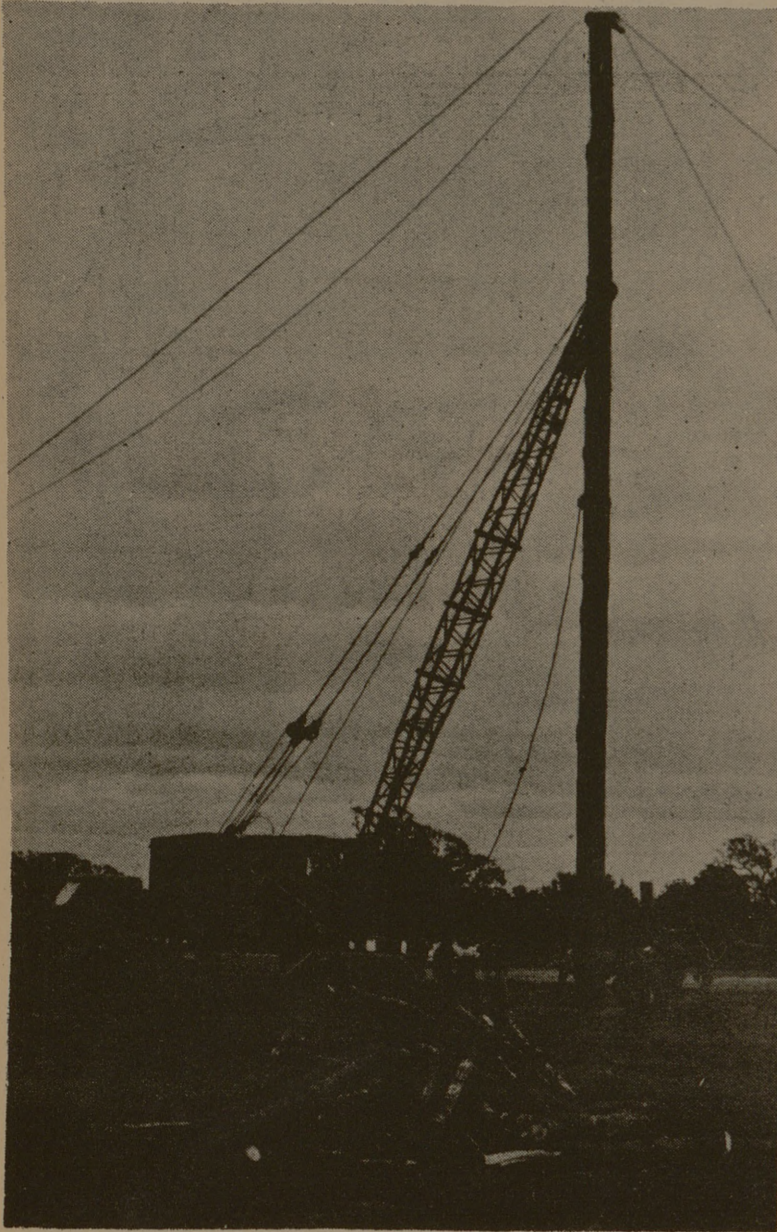
the 400 to 900 pound logs are toted to trucks. Power cranes are used almost exclusively for stacking now, where manual labor was once the only force. Double stacking achieves 60 to 80 foot heights,

but requires special and careful placement of logs end-to-end on top of the first stack. Considerable research and experimentation has gone into making the center strong and compact. Numerous safety precautions

are followed, including only juniors and seniors handling axes. Gloves and goggles are required for transportation regulations are rigidly enforced. As the logs are moved from the cutting areas to the stacking

area on the Duncan drill field just east of President Earl Rudder's home, the spirit and pride swells within everyone who works on the Bonfire. A strict security and safety ring is maintained around the

site at all times and only those who are working on the stacking are allowed to come near the Bonfire. The work goes on for days and into the nights, right up until the torch is thrown onto the stack.



## World's Largest Bonfire Takes Shape

### A&M WESLEY FOUNDATION

Church and Tauber Streets—North Gate  
J. Phil Kirby, Campus Minister—Phone 846-6014

SUNDAY—Campus & Career Class—9:45 a.m.  
Campus & Career Fellowship—5:30 p.m.

WEDNESDAY—C & C Fellowship—5:30 P.M.

Friday: Wesley Coffee House—7:30 P.M.

All Meetings at Methodist Student Center

### BAPTIST STUDENT UNION

(Student Center One Block North of Post Office)  
Phone 846-6411

Bob Burch, Director

Tues. and Thurs.: 7:15 P.M.—BSU Vespers  
Daily Noon Bible Studies

Wednesday Noon—Spiritual Boot Camp

Friday: 5:30 P.M.—Missions

### Statement of Purpose for the Campus Ministry at Texas A&M University

Texas A&M University is concerned with the total development of its students. The encouragement of spiritual growth is highly important in this program of total development for those who come here seeking an education.

There are many faiths represented among the students, faculty and staff members who comprise the University community. Our campus ministry is called upon to stimulate spiritual growth among the members of the University community as they search for more meaningful direction in their lives, according to their particular faiths. This task is accomplished through various types of worship, programming, and personal counseling, which we know as the campus ministry.

In a spirit of close harmony, the campus ministry assists the University in its educational program by helping members of the various faiths represented to become more sensitive to their responsibilities in the economic, political and social world. In so doing, the campus ministry performs the vital duty of demonstrating the close relationship between religious faith and worthy citizenship.

A program such as this requires continuous communication between the various faiths represented and the University. Effective communication assures each student the opportunity to hold fast to his faith while studying here, thus laying groundwork for continued spiritual growth in the years to follow.

Earl Rudder  
President

### UNIVERSITY LUTHERAN CHAPEL & STUDENT CENTER

(Missouri Synod)  
315 N. Main

Hubert Beck, Campus Pastor  
846-6687

SUNDAY: 9:30 A.M.,  
10:45 A.M., Morning Worship

WEDNESDAY: 7:30 P.M., Mid-Week Vespers

### OUR SAVIOUR'S LUTHERAN STUDENT CENTER

Serving Lutheran Students of The American Lutheran Church and The Lutheran Church in America

2 Blocks North of North Gate at Main, Cross, & Tauber

Pastors: Carl Ruch, Ron Birk  
Phone 846-5011

SUNDAY:  
8:30 A.M. Worship Service  
9:30 A.M. Church School and Aggie Discussion Group  
10:45 A.M. Worship Service

WEDNESDAY:  
7:30 P.M. Student Vespers

### B'NAI B'RITH HILLEL FOUNDATION

Ike and Fannie Sablosky Building — 800 Jersey St.  
Mrs. Raymond Reiser, Hillel Student Advisor

Telephone 846-7313 — Res. 846-6553

Hillel Club Meeting Wednesday—7:30 P.M.  
Sabbath Services Friday—8:00 P.M.

800 Jersey — 846-7313

### UNITED CAMPUS CHRISTIAN FELLOWSHIP

(Christian Church, Presbyterian Church, and United Church of Christ)

University Drive & Tauber Street (North Gate), 846-6639

Campus Ministers  
Walter Allen  
Jim Fenner

Watch for notices about the Coffee Loft, "Encounter" Luncheon and film programs.

Worship with any of these churches  
A&M Presbyterian (College Station), Faith United Church of Christ, First Christian Church, First Presbyterian Church (Bryan).

### CANTERBURY ASSOCIATION EPISCOPAL CHURCH

906 Jersey Street (South Side of Campus)

The Rev. William Oxley, Rector  
The Rev. Wesley Seeliger, Chaplain  
Phone 846-6133

SUNDAY—Worship Services  
WEDNESDAY—Canterbury Association