

# 1969-70 Officers Elected By 5 Campus Organizations

## Alpha Phi Omega

Edward Hamilton, a junior sociology major from Dallas, will head activities of Alpha Phi Omega for the fall semester.

Other officers elected include Larry Finley, vice president of programs, a sophomore aerospace engineering major from Orlando, Fla.; Paul Ammons, vice president of operations, a sophomore

physics major from Houston, and David Weber, vice president of personnel, a sophomore in management from Taylor.

Also elected were Harold Woodall, treasurer, a junior electrical

engineering major from Grand Saline, and Allen Lockhart, secretary, a sophomore in recreation and parks from Coulee Dam, Wash.

as freshman adviser by the group for the following year.

## Recreation, Parks

The Recreation and Parks Club recently elected six officers for the 1969-70 season, according to Mel Rapp, reporter.

The newly elected officers are Ron Bisbee, president; Bill Seal, vice-president; Doug Schoppe, secretary-treasurer; Pete Hansel, social chairman; Bob Cain, representative for the Agricultural Council, and Rapp.

## Sociology

Elected to lead the Sociology Club next year were Jim Richardson, junior from Temple as

president; Jimmy Brown, junior student from Bryan as vice-president; and Edward L. Rogers, a junior from Fort Worth as secretary-treasurer.

John Graesser, junior from Dallas was elected representative of the Sociology Club to the Student Agricultural Council.

## SAME

Society of American Military Engineers activities in 1969-70 will be headed by Stephen F. Hiltbold, architectural construction major of Corpus Christi.

Serving with Hiltbold, a junior and cadet sergeant in Company G-1 of the corps this year, will be four other newly-elected

officers. Vice presidents include sophomores F. Malcolm Hofstetter, civil engineering major of Belaire, and Scott Vincent, nuclear engineering San Antonio. Secretary is Pete G. Gerukos and treasurer is John P. Booth. Both are freshmen aerospace engineering majors of San Antonio.

## Alpha Zeta

Alpha Zeta has elected five officers and a freshman advisor.

Kenneth Graeber of Brenham was elected Chancellor. Other officers are Tommy Fuchs of Rowena, Censor; Andy Scott of Childress, Scribe; Juan Ceballos of the Dominican Republic, Treasurer; and Tom Curl of San Juan, Chronicler.

Dr. Lonnie Jones, Agricultural Economics professor, was chosen

Take a Break, Call In For A Treat  
A Hot Delicious And Tastee



**Ralph's PIZZA FREE** 846-4112  
Dorm Delivery

For Carry Outs or Sit Inn Allow 15 Minutes

**CASH FOR USED BOOKS**

We Sell To  
100 College Stores

**LOUPOT'S**



# END OF WEEK Shop PIGGLY WIGGLY Food Specials

\* THESE PRICES GOOD THURS-FRI-SAT MAY 22-23 & 24, 1969

WHOLE U.S.D.A. INSPECTED PAN READY

**CUT-UP FRYERS** LB. 35¢

FRYER PARTS

BREASTS	LB. 69¢
THIGHS	LB. 49¢
DRUMSTICKS	LB. 55¢
WINGS	LB. 29¢
BACKS	LB. 15¢
LIVERS	LB. 89¢
GIZZARDS	LB. 49¢

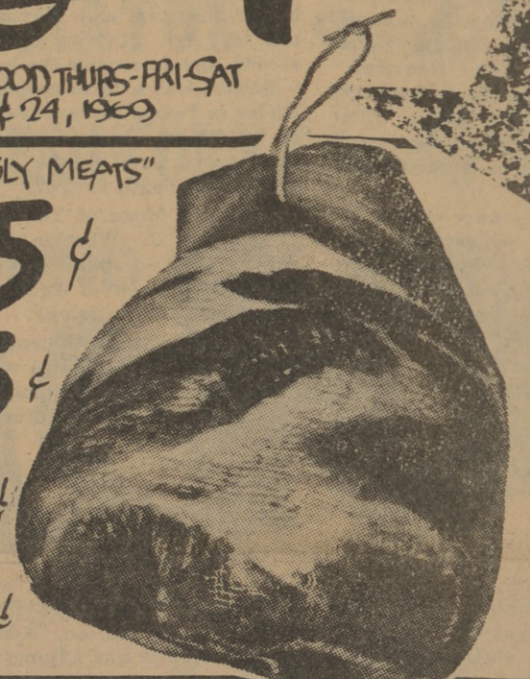
"TREAT YOUR FAMILY TO THE EXTRA SPECIAL TASTE TREAT OF PIGGLY WIGGLY MEATS"

**PICNICS** SAMUEL MOHAWK SMOKED WHOLE 6 to 8 LB. AVERAGE .... LB. 35¢

SAMUELS MOHAWK PICNICS **BUTT HALF** LB. 39¢ | SAMUELS MOHAWK PICNICS **SHANK HALF** LB. 35¢

SUCED WHOLE **PICNICS** LB. 39¢ | CENTER PICNIC **SUCES** LB. 59¢ | SMOKED **HOCKS** LB. 39¢

MOHAWK SUCED **BACON** 1-LB. PKG. 69¢ | SUPER TASTE **FRANKS** 1/2 LB. PKG. 49¢




**MARYLAND CLUB COFFEE** LB. CAN 39¢

LIMIT 1 WITH \$5.00 OR MORE PURCHASE

**DOUBLE STAMPS TUES.** WITH \$2.50 PURCHASE OR MORE

"DISCOUNT PRICES ON HEALTH & BEAUTY AIDS"

GRAPEFRUIT JUICE	TEKSLIP PINK 2 1/2 CANS	49¢
CHUNK TUNA	BREAST OF CHICKEN 3 1/2 CANS	89¢
LUNCHEON MEAT	PREM 1/2 OZ CAN	49¢
BLACK PEPPER	GRIFFIN GROUND 4 OZ	45¢
SAUCE	STOKELY TOMATO 10 8-Oz. Cans	\$1
ORANGE JUICE	SEALD SWEET FROZEN 6 OZ CANS	6¢
BAMA JELLY	* APPLE GRAPE * APPLE BLACKBERRY * APPLE STRAWBERRY 18 OZ TUBES	3¢
CHARCOAL	"ARROW" "BRIGUETS" 10 LBS.	59¢
SAUSAGE	SWIFT VIENNA 4 4 OZ CANS	89¢
LEMONADE	Sealed Sweet Pink or Regular 6-Oz. Can	10¢
MICRIN MOUTHWASH	Reg. \$1.15	89¢
GLEEM TOOTH PASTE	(LUSH PRICE \$1.05) EAM SIZE	79¢
ARRID CREAM DENT	(LUSH PRICE 85¢) LGE SIZE	63¢

100 FREE GOLD BOND STAMPS WITH PURCHASE OF \$10.00 OR MORE, EXCLUDING TOBACCO. BRYAN PIGGLY WIGGLY ONLY. EXPIRES: SAT. MAY 31, 1969.

25 FREE GOLD BOND STAMPS WITH PURCHASE OF PIG FIDDLE FADDLE. BRYAN PIGGLY WIGGLY ONLY. EXPIRES: SAT. MAY 24, 1969.

25 FREE GOLD BOND STAMPS WITH PURCHASE OF PET COFFEE CREAMER. BRYAN PIGGLY WIGGLY ONLY. EXPIRES: SAT. MAY 24, 1969.

50 FREE GOLD BOND STAMPS WITH PURCHASE OF TENDER LEAF INSTANT TEA. BRYAN PIGGLY WIGGLY ONLY. EXPIRES: SAT. MAY 24, 1969.

25 FREE GOLD BOND STAMPS WITH PURCHASE OF INSTANT SEGO. BRYAN PIGGLY WIGGLY ONLY. EXPIRES: SAT. MAY 24, 1969.

NORTHERN **TISSUE** 4 ROLL PACK 37¢

HUNTS **PEACHES** 4 2 1/2 CANS \$1

SNO CLUB **MELLORINE** 3 1/2 GALS \$1




**Del Monte CORN** WHOLE KERNEL CREAM STYLE 303 Cans 4 \$1

FRESH LARGE SIZE **LETTUCE** 2 Heads 29¢

Texas **CANTALOUPE** 4 For \$1.00

New **POTATOES** ..... Lb. 29¢

Winesap **APPLES** ..... Lb. 29¢



**BRYAN, COLLEGE STATION, TEXAS**