

BUSIEK AGENCY
 REAL ESTATE • INSURANCE
 F.H.A.—Veterans and Conventional Loans
FARM & HOME SAVINGS ASSOCIATION
 Home Office: Nevada, Mo.
 3523 Texas Ave. (in Ridgcrest) 846-3708

MS PhD
ENGINEER OR GEOLOGIST
 graduating in '69
 Three or more years experience in Petroleum Production and Exploration is requested for this operations research position.
 All interview and relocation expenses are paid. Our service charge is also paid by this outstanding company. Salary up to \$16,000 per year.
Phamrock EMPLOYMENT SERVICE
 331 University Dr. - Suite A
 846-3737

Phoenix Grabs Kerr Twins

NEW YORK (AP)—Milwaukee picked a UCLA teammate to go with All-America Lew Alcindor and the Phoenix Suns grabbed a pair of flashy twins from Colorado State Wednesday as the National Basketball Association completed its 1969 college player draft.

"It was not a real good draft after the first two rounds," said Red Auerbach, general manager of the champion Boston Celtics. "There were some good players but over-all not as good as in other years."

The first two rounds were staged April 8 by telephone and there were 12 more Wednesday, but several teams began passing

early. San Francisco picked a girl, Denise Long of Union Iowa on the 13th round but the choice was disallowed.

The Milwaukee Bucks, who got Alcindor as their first pick in the original draft and then signed the towering UCLA star for \$1.4 million, added Ken Heitz, a 6-3½ forward-guard. He was picked in the fifth round.

Two other UCLA players also were chosen — Bill Sweek, a 6-2½ guard, by Phoenix, and Lynn Shackelford, a 6-5 forward, by San Diego, both in the seventh round. Another UCLA star, Lucius Allen, went to Seattle in the original draft.

The Phoenix Suns, an expansion team leading off the third round draft, plucked Floyd Kerr, a 6-3, 207-pound guard-forward from Colorado State, and then, later in the same round, exercising a choice gained from Atlanta in a deal, picked up Floyd's twin brother, Lloyd.

Lloyd is a guard, 6-3, 197 pounds. The two Kerr boys are from South Bend, Ind.

Floyd was drafted by the Los Angeles Stars of the rival American Basketball Association as well as the Dallas Cowboys of the National Football League. He was the Most Valuable Player in the Utah Classic and a member of the All-Star team in the Midwestern NCAA finals at Manhattan, Kan.

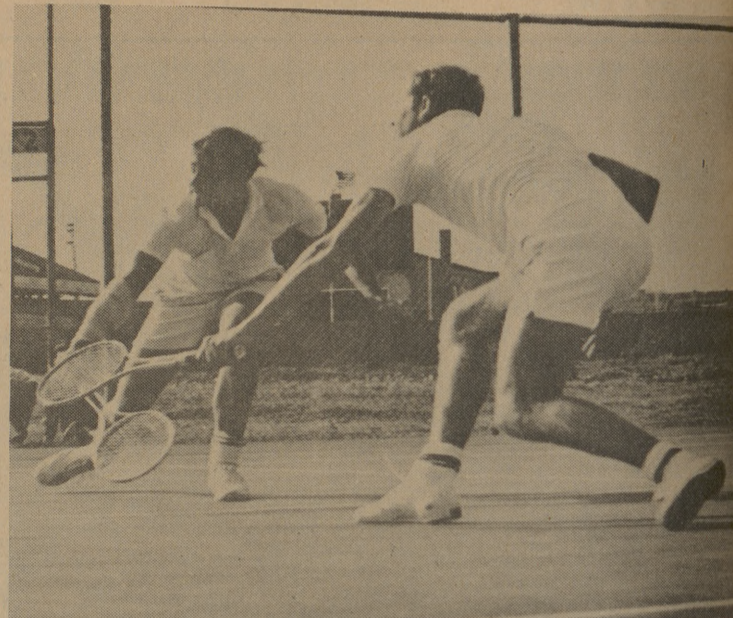
Lloyd was drafted by the Oakland Oaks of the ABA.

Jerry Colangelo, general manager of the Phoenix team, said that the Kerrs were the players the Suns wanted most.

"They can make the NBA," he said. "They have a good basketball background, coming from South Bend, and they have played a tough schedule at Colorado State.

Both are said to be very quick and good shooters. Lloyd averaged 15.7 points and accounted for 136 rebounds his senior year while his twin brother, Floyd, averaged 13.9 and had 165 rebounds.

The most famous twin brothers to play in the NBA have been Dick and Tom Van Arsdale, from Indiana University. Dick, originally drafted by the New York Knicks in 1965, went to Phoenix in the expansion draft. Tom, first in the draft with Detroit, later moved to Cincinnati.



DOUBLES TEAM
 The Aggie tennis team will be represented in the SWC Meet in Waco this weekend by Jon Ragland (left) and Pete Faust. Both of the Aggies will play singles and they'll team in the doubles. The tennis meet is today, Friday and Saturday.

A-2 Crowned IM Champs

The intramural champions for Class B competition was A-2. They were far out ahead of all of the other units with 680 points. Second place went to Sq. 1 with 642 points and third to F-1 with 639 points.

A-2 did well in practically every sport and they won Class B championships in basketball, volleyball and tied for first in swimming. Sq. 1 were champions in handball and took second in volleyball. F-1 were the wrestling champs and took second in football.

Sq. 11, the bowling champions and third in both softball and swimming finished fourth. Fifth place went to A-1 who finished with the softball title to their credit.

In Class A softball A-1 beat Sq. 3 in the semi-finals Tuesday afternoon and went on to defeat Sq. 5 in the championship that

evening. Sq. 5 just barely made the finals with a 10-9 victory over B-1. B-1 was losing 10-1 going into the last inning when they put together an 8 run rally falling one run short.

The championship was played under the lights in a drizzle. A-1 jumped out to a 4-0 lead in the first inning, but Sq. 5 kept it close by scoring twice in the second and third innings. A-1 put together another rally to take a 8-5 lead at the end of 4 innings and head on to win by one run.

SWC Golfers In Waco Today

Three juniors and one senior, who carried Texas A&M to the Southwest Conference golf team championship this spring, will try for the SWC Individual title this weekend in Waco.

The lone senior on the championship squad is Bill Wade from Freeport (Brazosport). Wade also was a member of the 1967 SWC title team as a sophomore.

The three juniors are Duke Butler, College Station; Richard Ellis, Pampa and Reggie Majors, Houston (Waltrip).

The SWC Individual Championship will be played Thursday and Friday at the Ridgewood Country Club in Waco. The players will shoot 36 holes each day.

NFL, AFL Clubs Talk Realignment

NEW YORK (AP)—National Football League club owners met at the commissioner's office Wednesday, discussing realignment preparatory to the start of joint discussions with their American Football League colleagues Thursday.

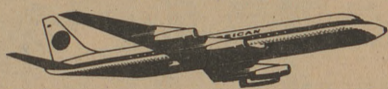
The meetings over realignment originally began at Palm Springs, Calif., in mid-March, continued last week and were recessed again at that time without any firm plan over realignment emerging.

However, most of the owners in both leagues favor a plan that would take three teams from the 16-team NFL and move them into the 10-team AFL. The problem is getting three teams to shift.

Presumably, the NFL owners were trying to reach some decision along those lines before going into session with the AFL owners.

The teams most prominently mentioned as possible contenders for moving include New Orleans and Atlanta, the two most recent NFL franchisees; Philadelphia, now under new ownership; Minnesota and Baltimore.

AIRLINE



Instant Reservations by Computer

Free Ticket Delivery

"A Complete World-Wide Travel Service"

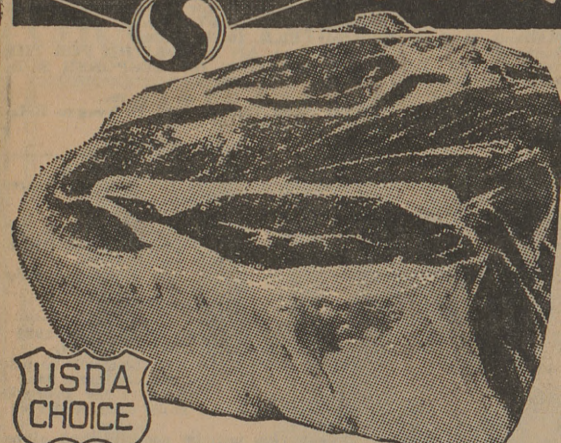
846-3773

BEVERLEY BRALEY TOURS-TRAVEL MSC LOBBY

perma-crease
 Westbury Slacks
Dva Starnes
 university men's wear
 329 University Drive 718/846-2706
 College Station, Texas 77840

SAFeway LOW, LOW PRICES EVERY DAY Plus SPECIALS!

Unconditionally Guaranteed to Please!



Chuck Roast
 Full Blade Cut, USDA Choice Grade Heavy Beef —Lb. **55¢**

Chuck Steak —Lb. **69¢**
 Or *Seven Roast, USDA Choice Heavy Beef

Arm Roast —Lb. **79¢**
 Full-Cut, USDA Choice Grade Heavy Beef

Smoked Picnics —Lb. **35¢**
 6 to 8-Lb. Average, Whole

Sliced Picnics —Lb. **43¢**
 Smoked, *Half or *Whole



USDA Inspected... Grade "A"

Ground Chuck —Lb. **75¢**
 Compare Fat & Lean Content

Sliced Bacon Safeway 1-Lb. Pkg. **75¢**
Armour Bacon Armour's Star Mire Cure, Sliced 1-Lb. Pkg. **75¢**
Thick-Sliced Bacon Safeway 2-Lb. Pkg. **\$1.45**
Canadian Bacon Old Fashion, By the Piece 1-Lb. **\$1.19**
Boneless Ham Samuel's Choice, *Half or *Whole 1-Lb. **\$1.29**

Compare Pork Values!
Spareribs Fresh-Frozen, Medium Size, 3 to 5-Lb. Avg. —Lb. **49¢**
Pork Chops Quarter Sliced Pork Loin —Lb. **69¢**
Pork Roast Boston Butt —Lb. **55¢**

FRYERS —Lb. **29¢**
 Everyday Low Price! Whole —Lb. **29¢**
 (Cut-Up Fresh or Frozen —Lb. **35¢**)
Leg Quarters Fresh, USDA Inspected —Lb. **39¢**
Breast Quarters Fresh, USDA Inspected —Lb. **45¢**

Salad Dressing Piedmont Special! Quart Jar **29¢**

Tomato Soup Town House 10¼-oz. Can **10¢**
 Big Buy!

Detergent Drive With EN-ZOLVE 3-Lb., 1-Oz. Box **59¢**
 Special!

Crisco All-Vegetable Shortening 3-Lb. Can **49¢**
 Special!

Stewed Tomatoes Hunt's, Special! 14½-oz. Can **19¢**
Enriched Flour Harvest Blossom, Big Buy! 5-Lb. Bag **39¢**
Soda Crackers Melrose, Big Buy! 1-Lb. Box **19¢**
Cheese Spread Breeze, Imitation Process, Big Buy! 2-Lb. Box **59¢**
Liquid Bleach White Magic, Big Buy! Gallon Plastic **38¢**
Twin Pet Dog Food Big Buy! 15-oz. Can **7¢**
Soft Drinks Cragmont, *Regular or *Diet, Assorted 2 Quart Bottles **25¢**

Lucerne Nonfat Instant Milk
 Less Than 10¢ a Quart!
 12-Qt. **\$1.09** 20-Qt. **\$1.69**
 Pkg. Pkg.

Portable Mixer With Nylon Beaters, Automatic Hoister, 3-Speed Motor, Hoel and Wall Mount, Each —Only **\$8.88**
Vitalis Hair Tonic Trial Offer, 2-oz. (40¢ Value) Bottle **19¢**

Biscuits Mrs. Wright's, *Sweet Milk or *Buttermilk. (Limit 6) 8-Oz. Can **5¢**
 Special!

Safeway Coffee 59¢ Why Pay 63¢
 Pre-Ground —1-Lb. Bag

Potato Chips Party Pride, Regular Reg. **49¢** Why Pay 57¢
Chocolate Syrup 16-oz. Can **25¢** Why Pay 27¢
French's Mustard Rich Tangy Flavor! 9-oz. Jar **17¢** Why Pay 19¢
Graham Crackers Busy Baker 16-oz. Pkg. **33¢** Why Pay 35¢
Fruit Cocktail Steakley 16-oz. Can **27¢** Why Pay 29¢

Garden Fresh Fruits & Vegetables!
Strawberries 3 for **\$1**
 Red Ripe, Plump, Juicy Sweetness! —Full Pint Baskets
Rhubarb Crimson, Fresh and Tender —Lb. **29¢**
Carrots Safeway, Fresh Crisp 2-Lb. Cello **23¢**
Lettuce Large Crisp Heads (*Romaine *Leaf or *Red, Ea. 2 for 49¢) Each **19¢**
Cucumbers Fresh Crisp, Each 2 for **25¢**
Turnip Greens Fresh & Tender Bunch, Each 2 for **29¢**
Valencia Oranges Juicy 4-Lb. Bag **49¢**
Radishes Fresh Crisp, Bunch, Each 2 for **25¢**
Cabbage Texas Finest —Lb. **5¢**
Red Potatoes U.S. #1 "A" 10-Lb. Bag **59¢**

Cane Sugar 55¢ Why Pay 57¢
 8-Lb. Bag
Facial Tissues 100-Ct. 17¢ Why Pay 21¢
Fresh Milk 1/2-Gal. Carton **57¢**
Ranch Style Beans 15-oz. Can **16¢** Why Pay 2/37¢
 Prices Effective Thurs., Fri. and Sat., May 8, 9 and 10, in BRYAN
 We Reserve the Right to Limit Quantities. No Sales to Dealers.

Frozen Food Values!
Ice Cream Snow Star, Assorted Flavors, 1/2-Gal. Carton **49¢**
 Special!

Lemonade Scotch Treat, Regular 4-oz. Can **10¢**
Cream Pies Bol-air, Assorted 14-oz. Pkg. **29¢**
Orange Juice Scotch Treat, From Florida 6-oz. Can **19¢**

the pipe
 IS HERE!
 the world's coolest, driest smoke
 bowl of pyrolytic graphite
 needs no break-in
SAFeway
 © Copyright 1969, Safeway Stores, Incorporated.