

# Freshmen Question Visiting Engineers

Practicing engineers are taking their experience back to the classroom.

Recipients are freshmen engineering students in the Engineering Graphics Department, head Dr. James H. Earle disclosed Wednesday, the second day of visiting engineers on campus.

"It's an attempt to provide freshmen with a better understanding of engineering and its application through the cooperation of visiting engineers from various industries," he added.

Earle said 36 engineers will give a day out of their schedule in the next two weeks to work "closely with 1,050 students."

It is the second visit on campus by many of the engineers who work in teams. Similar teams were at A&M in October.

Earle noted the program is an added feature of his "Graphics 105" course. It is structured to introduce the student to engineering design, problem solving, engineering application and communications.

"Emphasis is placed on the use of the graphical process to originate and develop ideas as well as present them in an engineering form," he stressed.

Class members, like visiting engineer teams, are divided into teams. Each team spends approxi-

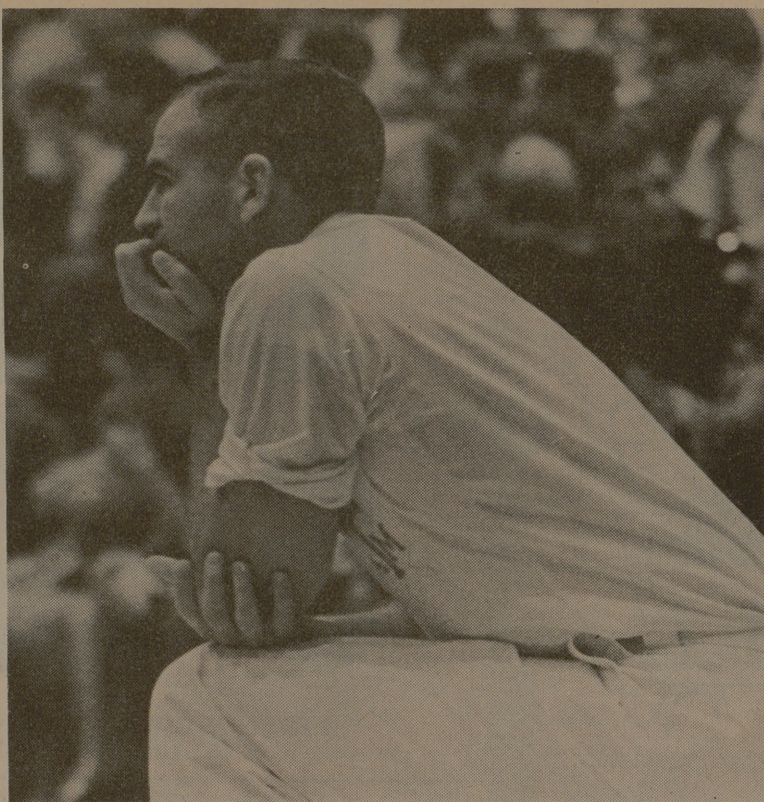
mately 40 manhours on a design project. Class team members make a final presentation before their class and the three-member engineer panel.

"These engineers are consultants," pointed out Earle, who noted they are rotated between different classes "to participate on three different projects and have direct contact with all students."

Although students ask questions of the engineers, "they are not expected to provide problem solutions, but instead offer general guidance and evaluation of preliminary ideas of the teams," Earle emphasized.

Engineers are encouraged to refer to their company's operations and their methods of develop products or solving problems.

One of the big advantages of the program, Earle said, is that "it provides the student with an exposure to an engineering evaluation" of his project.



**THIS IS TENSION**

David Hoelscher, junior yell leader, watches as the Red Raiders fight from behind during Tuesday's night game. The past home opponents have rallied from a large deficit to make the game too close for comfort. (Photo by Mike Wright)

# Ags Aid Rehabilitation

Rehabilitation of Texas Department of Public Corrections offenders at Huntsville will be assisted in 1969 by the first of several A&M psychological research projects.

The studies will be related to but not a fiscal part of massive state rehabilitation programs, supervised at Huntsville by Wilbur D. Kutach. The assistant director in charge of treatment is an A&M education graduate with bachelor and master's degrees.

Dr. Larry B. Christensen's project with Arnold LeUnes, A&M psychology instructor, will determine psychological characteristics of the public offender.

Psychology Department faculty members also plan to examine other areas, according to Dr. William R. Smith, head.

"THE CHARACTERISTICS

project is only the beginning of A&M psychology involvement," Kutach said.

As a descriptive study, the Christensen-LeUnes project will attempt to identify psychological characteristics of law breakers by standardized tests. Parameters will be evaluated for use in fitting offenders into the best type of rehabilitation, to maximize state programs.

"We've got one major problem," Christensen said. "Standardized tests we will employ were constructed for literate persons."

"The situation at Huntsville is unique, if in no other way but that the average persons we will test had only a fifth to seventh grade education," he pointed out.

"Some had no public schooling and others completed high school. But all must be considered sharp

in terms of common sense, if not in literacy, the assistant professor added.

CHRISTENSEN SAID the project will be conducted in two stages and should be completed by next summer.

"First, we will test our tests," he said. A battery of six psychological tests will be adapted to the offenders' intelligence level.

"Test testing on a group of about 50 will determine whether responses and information obtained is reliable. This should be completed by mid-March," Christensen indicated.

"If the tests check out, they'll be given to a larger group, say 300 to 500, depending on time factors," he went on.

In the second phase, characteristics will be analyzed by types of offenses, into which the tested group will be broken down.

CHRISTENSEN SAID the battery of tests will measure personality, interest, self-concept, intelligence quotient, specific aptitude and value orientation of each individual. The Minnesota multiphasic personality, general aptitude test battery and group intelligence tests are given as part of Corrections Department procedure.

# Economic Guide Provided By Development Council

A book on the facts of life, economically speaking, will soon be available on those counties which comprise the Brazos Valley Development Council.

A&M's Industrial Economics Research Division is currently working with council members to provide potential investors an industrial facts book on Brazos, Burleson, Grimes, Leon, Madison and Robertson counties.

James R. Bradley, division head, is project director.

Field visits to the various governmental units, commercial and civic organizations and agencies within the council started this week. The researchers are Worth M. Blake, A&M assistant research economist, and A. C. Johnson, assistant director and planner for the council.

Glenn J. Cook, council executive director, reports that the survey, which began in December, will require approximately 90 days to complete.

Cook added the main purpose of the survey will be the publication of the industrial facts book which is a compendium of facts

about the facilities, people, economy and resources of the six-county area.

Bradley said research division and council staff members will "spend considerable time in the area interviewing leaders and gathering information."

Greyhound Bus Lines  
1300 Texas 823-8071

- Inexpensive Charter Service for student groups or classes.
- Group accommodations arranged.

**GO GREYHOUND**

...and leave the driving to us!

# PIZZA INN

**FREE DORM DELIVERY**

Open 11 a. m. to 12 p. m.  
Sundays 1 p. m. to 12 p. m.

Call 846-6164 or 846-9984  
For Orders To Go Or Eat In

413 Hwy. 6, So. Across from the Ramada Inn



# START SAVING - NOW -

OPEN A SAVINGS ACCOUNT

January 1 Begins Another Dividend Paying Period at FIRST FEDERAL. Savings Deposit By January 10th Earn Dividends From 1st. January.

**4 3/4%**

PER ANNUM

Paid Quarterly on INSURED SAVINGS

(5 1/4% On Time Certificates)

at

**FIRST FEDERAL**

SAVING and LOAN ASSOCIATION

2913 Texas Avenue  
BRYAN, TEXAS



YOU MAY OPEN YOUR ACCOUNT BY MAIL.

Just furnish the information requested below and forward your check to us.

NAME: .....

Social Security Number: .....

Mailing Address: .....

Amount Enclosed: .....

# Start the New Year with your own copy of the

# Texas A&M DIRECTORY

- Student Listings
- Faculty-Staff
- University Calendar
- Campus Map
- Student Senate Listings

# On Sale

AT

STUDENT PUBLICATIONS DEPT., EXCHANGE STORE  
SHAFFERS UNIVERSITY BOOKSTORE, MSC GIFT SHOP

1969 Caprice Coupe



No clowns. No hoopla. No funny hats.

This is an event for the serious car buyer. The man who has X number of dollars to spend and is determined to get his money's worth and maybe more.

Come to a Chevrolet Showroom during our Value Showdown.

Ask the man to show you, on paper, how you can order most any

1969 Chevrolet with a big V8 and automatic transmission for less than you could last year.

Come in and spend some time. Dig, probe, ask questions, take notes. You owe it to yourself to be thorough. Go for a drive.

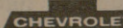
Get a free sample of Chevrolet's luxurious full-coil, cushioned ride. Shut the windows and see how fresh the interior stays, thanks to Astro

Ventilation. Feel the kick of the biggest standard V8 in our field.

Then go down the street or across town and see how we stack up against Those Other Cars.

We think you'll wind up with a Chevy.

More people do, you know.



Putting you first, keeps us first.

# The Chevrolet Value Showdown is on.

# YOU CAN'T LOSE WHEN YOU SELL AT LOU'S!