

# Trades Spice Baseball Meetings

## Tech Wrecks SMU, 87-59

ATLANTA, Ga. (AP)—Sophomore Rich Yunkus, shooting with deadly accuracy and outstanding on defense, led Georgia Tech to an easy 87-59 victory over Southern Methodist University Tuesday night.

The 6-foot-9, 200-pound forward tallied 26 points to lead all scorers. SMU closed the gap in the second half with Gene Phillips hitting on a 20-footer to tie the score 52-52 with 10:52 remaining. Tech's starters were resting at the time.

## Read Classified

### ATTENTION ALL CLUBS

Athletic Hometown Professional and All Campus Organizations.

Pictures for the club sections of the 1969 Aggieland are now being scheduled at the Student Publications office.

216 Services Bldg.

### PICTURES FOR AGGIELAND '69

ATTENTION: ALL COMMANDING OFFICERS Commanding officers of all Outfits and Staffs will have full length portraits made in boots and midnights for the Military Section. Deadline Dec. 31.

PLEASE MAKE INDIVIDUAL APPOINTMENTS WITH UNIVERSITY STUDIO FOR THESE FULL LENGTH PORTRAITS FOR THE MILITARY SECTION.

ATTENTION: All other staff members (including Juniors), Outfit executive officers, and first sergeants will have portraits made for the Military Section in G.H. caps and Class A Winter (blouse). Deadline Dec. 31.

Individual pictures made at the University Studio — North Gate.

## CAMPUS STARTS TODAY



**FRANK SINATRA**  
"LADY IN CEMENT"

## PALACE Bryan 2-8874

NOW SHOWING

Kim Novak

In

"LEGEND OF LYLAH CLARE"

## QUEEN

TONITE AT 7:15 - 9:15 P. M. ADULT ART SERIES

"CARMEN BABY"

## SKYWAY DRIVE IN THEATRE

TONITE AT 6:30 P. M.

"ADAM AND EVE"

At 8:30 p. m.

"SPREE"

(Both In Color)

## CIRCLE

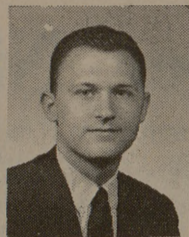
TONITE AT 6:30 P. M.

"A MAN AND A WOMAN"

At 8:30 p. m.

"THE ALAMO"

### Sports Desk



## A Study In Class

by John Platzer

Class is one of those indefinable terms that is often used though seldom deserved.

Webster's Collegiate Dictionary says that it is "high quality," but it is actually much more than merely that.

Class is a team that is never satisfied with defeat but that accepts it with dignity when it does come.

Class is a team that never makes alibies for its failures even when an extraordinary number of injuries make alibies excusable.

Class is a team that runs off the field the same way after every game—win, lose or draw.

Class is a team that collectively gives everything it has on every play of every game regardless of the situation.

Class is a team that never looks back at past victories or defeats but that is always looking forward to the NEXT game as the most important it will ever play.

Class is a team that can lose five games by a total of only 16 points and still display the poise and courage needed to battle against the fates.

Class is a team that can go into the dressing room at halftime of its final game trailing 35-0 and then, instead of throwing in the towel, display the personal "soul" and team pride necessary to dominate the second half and cut the deficit nearly in half.

Class is a coach who insists that all blame for every defeat be placed upon himself and not on his players when, in fact, neither coach nor players are responsible.

Class is a team that refuses to let the taste of bitter disappointments destroy its confidence that new and greater triumphs lie just beyond the practice fields of tomorrow.

Class is a coach and a team that has never heard of the four letter word "quit."

Class is Coach Gene Stallings and the 1968 Texas Aggie football team, a team that is a champion in every meaningful sense of the word.

## Smiley Battles Dallas SOC In Playoff Round Here Saturday

Unbeaten Dallas South Oak Cliff and come-from-behind Houston Smiley tangle at 2 p.m. Saturday at Kyle Field in a Class AAAA quarterfinal football game that has the earmarks of a tremendous battle.

The Dallas entry has impressive credentials. Dallas SOC has won 12 straight this season, 20 straight over the past two seasons (9-1 last year) and 25 of its last 26 (6-4 in 1966, winning the final 4 that campaign.) They have racked up 425 points against the opposition's 38 this year.

Houston Smiley, on the other hand, has an 8-3-1 record and in the last four games the Eagles have had to come from behind to post victories. After winning the 15-AAAA district crown, Smiley came from behind to beat Conroe, 22-14, in bidistrict and last week it pulled a 21-6 upset over Temple after trailing, 6-0.

Both clubs boast great defenses. SOC, on the basis of statistics, has the better offense but Smiley's has been improving greatly of late.

Coach Chuck Malone of Smiley says, "If we can block as well against South Oak Cliff and we

did against Temple and play another good round of defense, I think we'll be all right."

The Eagles' defense starts with linebacker Bruce Best, a 6-2, 210-pounder whom many college coaches say is the best head-hunter in Texas. "I know I wouldn't swap him for any linebacker in the state," says Malone.

But, stopping South Oak Cliff could present problems for Smiley's defense. The Dallas club boasts a trio of 9.6 sprinters in Hodge Mitchell, Danny Colbert and Burnis McFarland in the backfield. Mitchell has a 7.9 rushing average for 113 carries while Colbert has averaged 8 yards a run on 75 tries and McFarland 5.5 on 78 carries. Mitchell, a 180-pounder, has scored 17 touchdowns for the Bears this year.

Tickets for the contest will be on sale at the A&M business office in G. Rollie White Coliseum today. Advance tickets are \$2 for adults and \$1 for students. On game day the admission will be \$3 for all over 12 years of age and \$1 for those under 12.

The winner of this game advances into the state semifinals against the winner of the Odessa Permian-Irving game.

By MIKE RATHET Associated Press Sports Writer SAN FRANCISCO (AP)—Nine players, including shortstop Zoilo Versalles, third baseman Deron Johnson and Dave Giusti, changed hands Tuesday in four trades while major league baseball also took steps to aid its beleaguered hitters.

The biggest trade in numbers and the most unusual took place between National League champion St. Louis and the new San Diego club as the Cards re-acquired Giusti in exchange for four players.

Giusti was first acquired by St. Louis in a trade with Houston just after the past season but was taken off the Cardinal roster by the Padres in the expansion draft.

In the trade that returned him to St. Louis, the Cards parted with Ron Davis, who platooned with Roger Maris in right field last year; utility infielder-outfielder Ed Spiezio and two minor leaguers — pitcher Paul Knuckles and catcher Danny Breeden.

The Cardinals also were involved in an even player exchange with Boston, again acquiring a pitcher, Gary Waslewski, while sending utility infielder Dick Schofield to the Red Sox.

But the biggest trade in names involved Versalles and Johnson,

two players who were on top of the baseball world just three years ago. Versalles moved to Cleveland and Johnson to Philadelphia.

While the general managers were completing trades, their recommendations for counteracting a seeming imbalance of pitching over hitting in the majors last year were acted on, with the following two recommendations adopted:

1. The strike zone was reduced to the area over the plate between the armpits and the top of the knees. Previously, it was between the top of the shoulders and the knees, with the knee area not defined.

2. The height of the pitching mound was reduced to 10 inches and a recommendation made that the slope from the top of the mound to the grass area be gradual and uniform in every park. The height of the mound previously was up to 10 inches.

It was generally considered that the two steps would aid the hitters and counteract the amazing pitching in the majors last year with few averages .300 or better.

Versalles, who won the most valuable player award in the American League for leading Minnesota to the pennant in 1965 was acquired by the Indians in delayed payment from the new San

Diego club as part of an earlier deal with Cleveland.

The Indians also will have to deliver another player to the AL expansion club to complete the transaction.

Johnson, who was the National League runs-batted-in king for Cincinnati in 1965, was sold to the Phillies by Atlanta for an undisclosed amount of cash.

Acquisition of Johnson also invited speculation about the most-discussed player at the meetings, hard-hitting Richie Allen, who reportedly has fallen into disfavor with the Phillies.

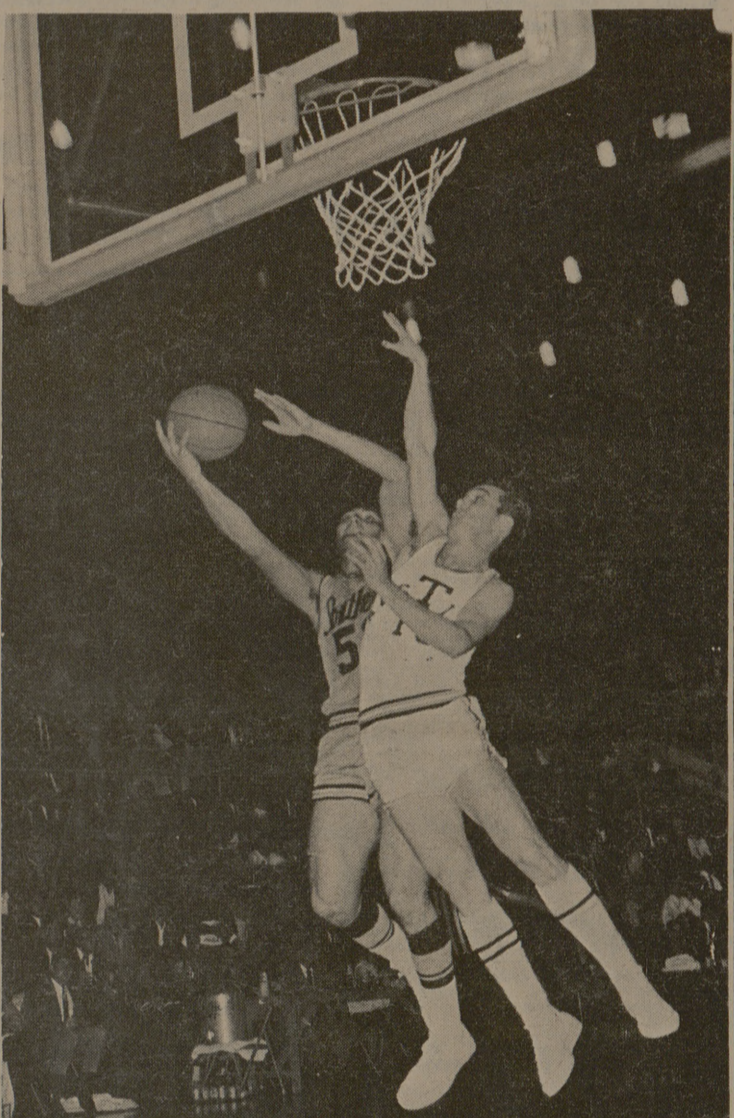
However, Bob Skinner, the Phillies' manager, contended that there was a general misunderstanding about Allen's availability.

"I'm not looking to trade him or anyone on our roster unless we get a bona fide offer," said Skinner. "This has been a real misunderstanding. I in no way want to trade him unless we can help ourselves."

ALBUQUERQUE, N.M. (AP)—The horse racing program during the 11-day 1968 New Mexico State Fair drew a record parimutuel handle.

For the entire program officials said \$5,510,506 was bet, to top the previous record of \$5,050,651 set in 1966.

On the last day of the fair, 13,250 persons wagered \$710,376 for a new single day mark.



### SUDDEN HELP

Sonny Benefield rushes in to stop Richard Corsetto of Southern Mississippi from making this layup early in the Aggies 95-82 triumph Monday night. The Aggies will tangle with the Centenary Gents Thursday night at 8 in G. Rollie White. No freshman game is scheduled for Thursday. (Photo by Mike Wright)

### FACULTY - STAFF - STUDENTS - PATRONS

We believe this is one of the best overall entertainments brought to the southwest and this community.—you must see it— we guarantee that you will love the buoyant liveliness of this huge Folk Dance/Orchestra Presentation.

"... a gay and completely winning evening's entertainment..."—Watt, N.Y. News  
"... A whirlwind! Exuberance personified!..."—Kastendieck, N.Y. Journal American  
"... the season's most exhilarating splash of folk music and dance..."—Biancolli, N.Y. World Telegram  
"A whirlwind of joy!"—Washington Evening Star



G. ROLLIE WHITE COLISEUM, FRIDAY, DEC. 6, 8:00 P. M.

ADMISSION: Student Activity Card (plus ID), Town Hall Season ticket, Rotary Community Series Season ticket or Single Admission ticket on sale now.

A Town Hall Presentation



**Cole-Haan**  
SHOES  
Iva Starnes  
university men's store  
329 University Drive 713-6470  
College Station, Texas 77801

**THE AFTER-DROP**  
JUST ONE CHASES AWAY ANTISODOR BREATH.  
Binaca  
CONCENTRATED GOLDEN BREATH

**Ray Criswell Insurance**  
For Complete Insurance Service  
Dial 823-8231  
Ray Criswell, Sr.; Ray Criswell, Jr.  
"Insure Well With Criswell"  
2201 S. College Ave., Bryan, Texas

Call 822-1441  
Allow 20 Minutes  
Carry Out or Eat-In  
**THE PIZZA HUT**  
2610 Texas Ave.

### Seniors and Graduate Students

Career hunt with 90 of the finest companies having operations located in the New Jersey/New York metropolitan area. On December 26-27 at the Marriott Motor Hotel, intersection of Garden State Parkway and Route 80, Saddle Brook, New Jersey.

For more details, including a listing of sponsoring companies, see your college placement director or write to the non-profit sponsor of the second annual "Career-In": Industrial Relations Association of Bergen County, P. O. Box 533, Saddle Brook, New Jersey 07662.

LIBRARY CAMPUS

VOLUME

Walt Rostow listens into Conference Rostow's ke the confere W. R. Wright

Sha To

"Arms and Players produ day at Guior modern viewpo trust to the first season pl The George written anti-w Dec. 9 to 14 p.m., announce die Players di "Arms and the Aggie Pl of Euripides' men." "Both are a reasonably hui d Robert W. director. "But t two different employed hig uses satire, a er than anyon

Graduat Asks Cha Traffic S

The Graduat Wednesday dr proposals deal us traffic pro ed them to D P. Hannigan f The propos pedestrian, pa ble recommen • Removal trash containi walks to elimi from sidew • Paving o between the hearing Shops Building. • Buildi around this p to the attracti and keep pe streets. • Removal traps" (cemen front of the Center at Ho Streets, with four-way stop Houston Stree fe and provid flow across th

SC To

"U. S. Mil In Foreiq Gen. Harc 8 p. m., M

Bry Ass ings BB & L