

Intramural Round-Up

The intramural story for Thursday:

The new Class B football league got off to a flying start with seven games being played despite afternoon showers. On field one, A-1 defeated D-1 by a score of 6-0. D-1 twice drove inside the 20-yard line but each time the defense of A-1 held.

On field two, the score was the same, 6-0, but this time it was E-1 over B-1. F-1 showed their strength by pounding C-1, 26-0 on field three. On field four, Squadron 4 whipped Sqd. 1, 26-6. G-1 and C-2 battled to an 8-8 tie on field seven but G-1 was awarded the victory by virtue of more penetrations.

The first six Class A basketball games were played Tuesday with these results. A-1 edged D-1, 21-17, led by the 10 points of Bill Richardson. E-1 dominated B-1 by running up a 43-13 score. Sqd. 10 defeated Sqd. 1, 23-18, in the third afternoon game.

In the night action, C-1 slipped by F-1, 27-25, with Rusk hitting for 13 points. Sqd. 2 beat Sqd. 5, 32-20, and in the last game, Sqd. 11 downed Sqd. 3, 34-14.

In Class A horseshoes, F-1 beat C-1 three matches to none. In all of the other matches, one or more of the teams failed to show up and thereby forfeited the game. Check the schedules in the future to avoid such forfeits.

Class C handball has almost concluded with league competition and the playoffs will probably start next week. In league A, Keathley, Hughes, and Fowler will all have a shot at first place. Schumacher Hall has league B all wrapped up with a 4-0 record.

Law Hall is just one victory away from the championship of league C and Walton Hall will move to the finals from league D with an undefeated record.

AP Picks TU, Tech, Kansas

By WILL GRIMSLEY
Associated Press Sports Writer
NEW YORK (AP)—For 24 sleepless hours it looked as if this might be a good week for underdogs, but it isn't. So top-ranked Southern California and No. 3 Kansas should be able to fight off upset gremlins and keep their unbeaten records intact.

Not so Harvard, which runs against an aroused Princeton and loses some glitter. Last week's score: 48-11 for .814. Season: .774.

Southern California 27, California 20: O. J. Simpson got a bad game out of the way last week, should be ready to roll again.

Kansas 33, Oklahoma 25: Bobby Douglass & Company are strong challengers for the national championship.

Princeton 22, Harvard 19: The Tigers have a wealth of material which jelled for the first time a week ago.

Alabama 18, Louisiana State 14: The Crimson Tide lacks its usual wallop but catches an LSU team hurting in key places.

Penn State 23, Miami Fla. 14: A prospective Orange Bowl bid puts extra zip in the Nittany Lions.

Tennessee 24, Auburn 14: This

is a Tennessee team on the ascendancy, and that's not just whistling Dixie.

Texas 39, Baylor 7: The Longhorns maintain their average of

better than 30 points a game. Texas Tech 28, Texas Christian 14: The Raiders still have a sniff of the Cotton Bowl, although it's a faint one.

PIZZA INN

FREE DORM DELIVERY

Open 11 a. m. to 12 p. m.

Sundays 1 p. m. to 12 p. m.

Call 846-6164 or 846-9984

For Orders To Go Or Eat In

413 Hwy. 6, So. Across from the Ramada Inn



"Your friend for life" Robert Jaeckle

He's an easy person to talk with. And what he can tell you about policies specially designed for seniors and graduate students is worth listening to. It can make a lot of difference in your future. Talk with him when he calls. There's never any obligation.

Southwestern Life
INSURANCE COMPANY • SINCE 1903

Involve yourself

until it hurts
a little, and you grow
a lot, solving
challenging problems

We have the kind of job opportunities that put you right where the action is. Earnings are excellent... but a lot more than just money is involved. You'll be in the thick of important things instantly. And you'll learn fast. Pick the area that interests you most and fits you best: exploration, engineering, manufacturing, research and development, marketing, or administration. You'll want to check this out before you make the big decision.

Our representatives will be in on November 12-13
Full details available at the Placement Office

American Oil Company

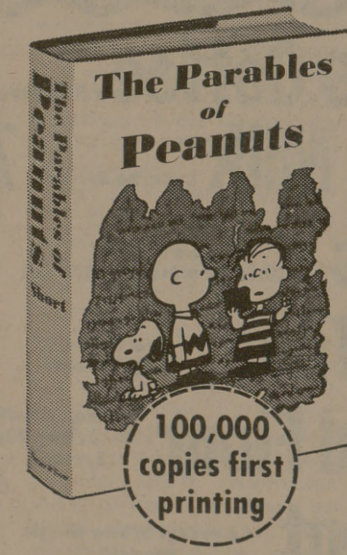


BATT PICKS

Game	Dave Mayes	John Platzler	Richard Campbell	Bob Palmer	Mike Wright	Mr. X	John Fuller
A&M vs SMU	A&M	A&M	A&M	A&M	A&M	SMU	A&M
Baylor vs Texas	TU	TU	TU	TU	TU	TU	TU
Rice vs Ark.	Ark.	Ark.	Ark.	Ark.	Ark.	Ark.	Ark.
TCU vs Tech	Tech	Tech	Tech	Tech	Tech	Tech	Tech
Fla. vs Geo.	Fla.	Geo.	Geo.	Fla.	Fla.	Geo.	Fla.
USC vs Cal.	Cal.	USC	USC	Cal.	USC	USC	USC
Kan. vs Okla.	Okla.	Kan.	Kan.	Okla.	Okla.	Kan.	Kan.
Ala. vs LSU	Ala.	Ala.	Ala.	Ala.	LSU	Ala.	LSU
Tenn. vs Auburn	Tenn.	Tenn.	Tenn.	Tenn.	Tenn.	Tenn.	Tenn.
Purdue vs Minn.	Purdue	Purdue	Purdue	Purdue	Purdue	Purdue	Purdue
Last Week	7-3	4-6	6-4	5-5	5-5	8-2	4-6
Season	50-26	46-30	40-30	34-26	39-31	35-35	37-39
Pct.	.658	.605	.571	.567	.555	.500	.487

Read Battalion Classifieds Daily

The Aggies' will put the spurs to the Ponies, and enjoy the ride to A&M with victory.



by ROBERT L. SHORT

Charlie Brown, Snoopy, Lucy, Linus, and Schroeder dramatize new parables to fit our times.

Cloth, \$4.95 / Paper, \$1.95

At all bookstores

Harper & Row
1817

Greyhound Bus Lines

1300 Texas 823-8071

- Inexpensive Charter Service for student groups or classes.
- Group accommodations arranged.



Hallmark Items

- Stationery, books, cards
- baby albums
- shower invitations
- baby announcements
- shower centerpieces
- napkins, cups, plates etc.

AGGIELAND FLOWER AND GIFT SHOPPE
209 University Drive

1968 ANNUAL OF THE SWC GRID SEASON

ORDER NOW!

PRE-PUBLICATION

PRICE JUST

\$4.95

A 20% SAVINGS

OFF REGULAR PRICE



Here is the 1968 season. The zany, unpredictable Southwest Conference season. Where underdogs become topdogs on any given Saturday. Where comparative scores, home field advantage and other prognostic devices are thrown to the winds. Where on the day of the game it's just us versus them and to hell with what happened last week or last year. Yes, the Southwest Conference has tradition — anyone can win, anyone can pull the big shocker of the season and fate doesn't play favorites.

- A HISTORY OF THE 1968 SEASON
- HARDBOUND LIBRARY EDITION
- 7 1/4" X 10 1/2" / 160 PAGES
- OVER 130 PHOTOS (Color and Black & White)
- FULL COLOR DUST JACKET
- COMPLETE STORY OF 1968 COTTON BOWL GAME WITH PHOTOS IN COLOR

- A&M 20 ALABAMA 16
- PHOTOS AND ROSTERS OF 1968 TEAMS
- WEEK BY WEEK COVERAGE OF EACH GAME WITH PHOTOS AND STATISTICS
- SYNOPSIS AFTER EACH WEEK CONTAINS CONFERENCE AND SEASON STANDINGS, PLAYERS OF THE WEEK, TOP TEN POLLS AND FRESHMAN GAME RESULTS
- AFTER THE SEASON: ALL CONFERENCE AND ALL AMERICAN TEAMS, INDIVIDUAL LEADERS IN STATISTICS, FINAL STANDINGS AND FINAL TOP TEN
- 1969 SCHEDULES
- PREVIEW OF 1969 COTTON BOWL GAME
- FEATURE STORY ON SWC HISTORY

FILL OUT COUPON BELOW AND MAIL ALONG WITH YOUR CHECK OR MONEY ORDER TO: FOOTBALL HISTORY, INC. 4140 SOUTHWEST FREEWAY/SUITE 401, HOUSTON, TEXAS 77027. (Make check or m.o. payable to Football History, Inc.)

FOOTBALL HISTORY, INC.
4140 SOUTHWEST FREEWAY SUITE 401
HOUSTON, TEXAS 77027

Please mail me a copy of SOUTHWEST CONFERENCE FOOTBALL 1968 at the prepublication price. My copy will be mailed on or about January 1, 1969. Enclosed is my check or money order (no cash please) for \$4.95 plus 25c to cover postage and handling. (Residents of Texas add 15c for state sales tax.)

Name _____
Address _____
City _____
State _____ Zip _____

How to interview 170 companies in half an hour.

Just talk to the man from General Electric. He represents 170 separate GE "companies" that deal in everything from space research to electric toothbrushes. And each of these product departments is autonomous. Each has its own management and business objectives.

So a job at General Electric offers the kind of immediate responsibility you might expect to find only in a small business.

Right from the start you get a chance to demonstrate your initiative and capabilities. And the more you show us, the faster you'll move ahead.

As you do, you'll find that you don't necessarily have to spend a lifetime working on the same job in the same place. We have operations all over the world. Chances are you'll get to try your hand at more than one of them.

Our interviewer will be on campus soon. If you're wondering whether it's possible to find challenging work in big business, please arrange to see him. He speaks for 170 "companies."

GENERAL ELECTRIC
An equal opportunity employer