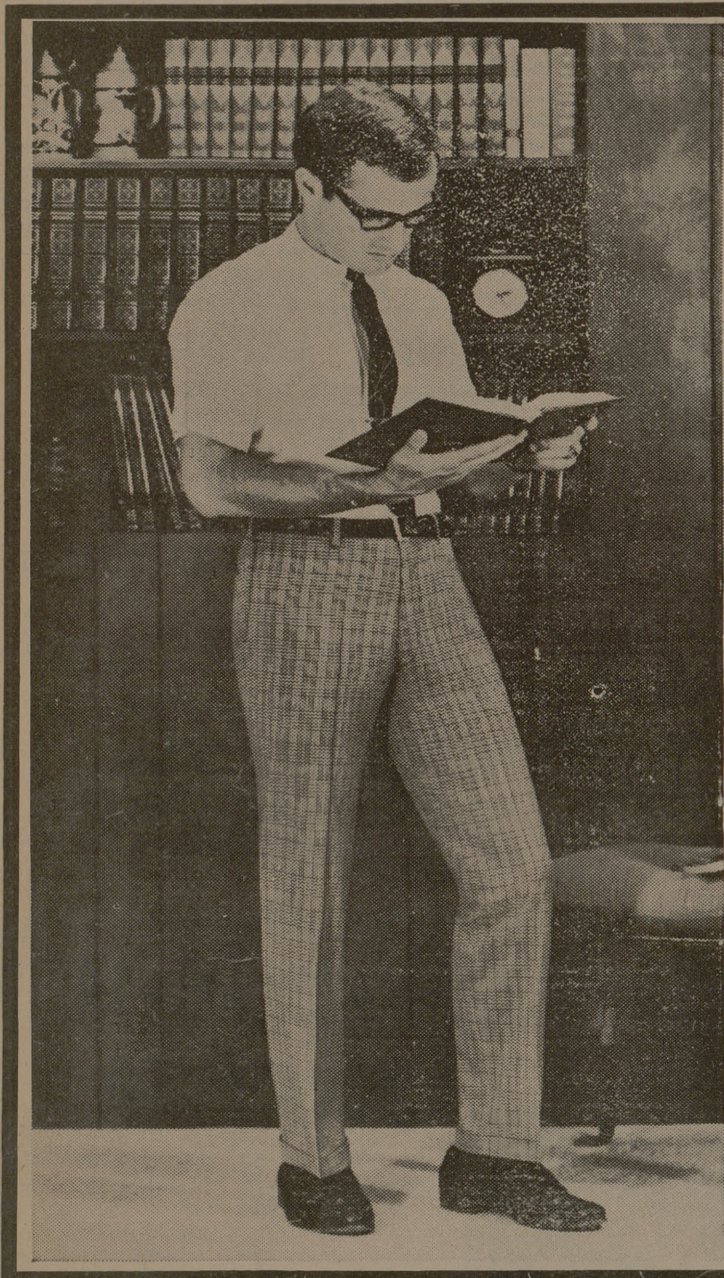


# GOP Ticket To Carry Texas



## LOUPOT'S

Your Fall Wardrobe Headquarters

- H.I.S.
- PURITAN
- CAMPUS
- LEE
- HICKS PONDER
- WEMBLY
- PHI-BATES
- GOLD CUP
- AETNA

## LOUPOT'S

"Traditional Clothing At Student Prices"

By STEVE WICK  
Battalion Staff Writer

John Hurd, Richard Nixon's state campaign manager, said in a Ramada Inn press conference Wednesday that Richard Nixon should carry the state of Texas with a 40 per cent plurality.

Hurd, an attorney and independent oilman in private life, added that Humphrey and Wallace should each receive about 20 per cent.

Asked about a newspaper article in which Nixon named Senator Edmund Brooke of Massachusetts Attorney General, Hurd quoted John Mitchell, Nixon's campaign manager that this article has "absolutely no foundation except in the overworked imagination of the author."

Hurd said that Nixon would accept a debate with Humphrey if Governor Wallace did not participate, among other conditions.

Nixon did not object to lowering the voting age to 18 and appointing a committee to look into possible voting reforms, Hurd declared.

He explained that Nixon did not wish to comment on the war in Vietnam because of the Paris peace talks. Hurd did say, however, that Nixon felt part of the problem in Vietnam was because of "too little being done too late."

Hurd indicated Nixon would not object to a volunteer Armed Services with "better pay and better training" in place of the draft.

Nixon's position on law and order remains that an adequate police force is needed to make sure people observe the law and that people disagreeing with a law should go through proper channels.



## FIREWOOD ANYONE?

High winds toppled this tree on athletic field across from Deware Field House Wednesday. (Photo by W. R. Wright)

# Pelican Island Ceremony Set For Oceanography Campus

Ceremonies dedicating Texas A&M's new marine and oceanographic campus on Galveston's Pelican Island will be conducted Oct. 18, announced President Earl Rudder.

The 2:30 p.m. ceremonies will officially designate the 100-acre facility the Mitchell Campus, in honor of Mr. and Mrs. Mike Mitchell of Galveston, parents of George P. Mitchell, Houston businessman and former A&M student who donated the land for

the new campus. In addition to the gift of land, Rudder noted the new facility is made possible through a \$1 million grant from the Moody Foundation of Galveston and \$500,000 provided by the state.

Texas A&M's board of directors approved plans this summer for development of the campus, with construction to begin within a year. It will include facilities for the Texas Maritime Academy, Marine Laboratory and other

oceanographic installations. Mitchell, whose parents will be special guests at the dedication, donated 40 acres individually and 60 acres through the Mitchell-Dobbins Land Corp., of which he is president.

Officials said the Galveston campus will figure prominently in the university's long-range plans to develop a Gulf Coast marine resources program for which it received a \$475,000 National Science Foundation grant for first-year operations.

The Texas Maritime Academy and the Marine Laboratory are now housed in facilities at Galveston's Fort Crockett.

Architect for the new campus is Raymond Rapp of Galveston, Bernard Johnson Engineers of Houston received the engineering contract.

# Aggie Players Go Greek In Production

An army of armor, authentic Greek costumes, a masonry wall and revamped lighting will go into the Aggie Players' Oct. 28-Nov. 2 production of "The Trojan Women."

The classic Greek drama on the futility of war centers on the actions of Troy's women at the fall of the city.

First of eight major plays scheduled by the theater group this year, "The Trojan Women" will be directed by C. K. Esten.

Bob Wenck, assistant director, said 39 students will handle some lights, properties, house-painting, costumes and set construction under stage manager Darwin Little of Houston. The junior education major will be assisted by Mark Fleishman, freshman pre-vet medicine major of Dallas.

In charge of completely revamping the Guion Hall stage for better and more flexible lighting, Robert Anderson, junior management major of Milton, Mass. For other students assist.

Responsibility for building a complete set of armor for Greek soldiers and officers rests with Robert Graham, junior accounting major of Houston, and four others.

Lucy Bishop of Dickinson, sophomore in pre-vet, and aides must design and produce from scratch Greek costumes for the more than 20-member cast. It is predominantly female.

Set construction under George McCoy, junior marine transportation major of Marble Falls, has the task of building a large-scale imitation masonry wall. Wenck said a resin technique new to the Players will be used. McCoy force includes 10 students.

A three-man sound crew headed by James Weyhenmeyer, junior education major of Livingston.

# SAFeway HAS THE LOW EVERYDAY PRICES & SPECIALS

We're so proud of the wonderful products made in Texas, that we want everyone to know exactly where each Texas item is grown, packed or processed. For that reason we've listed the town with each item. We hope you'll support these fine products. We're sure that you will agree—"What's good for Texans is good for Texas."

**-Be Sure to Attend- State Fair of Texas**  
Now Through Oct. 20  
Fair Park, Dallas, Texas

## SPECIAL PRICES ON TEXAS PRODUCTS!

- Wolf Chili** All Meat. Made in Corsicana. 19-oz. Can **59¢**
- Snowdrift** The Snowy White Shortening. Processed in Houston. 3-Lb. Can **59¢**
- Soft Drinks** Cragmont. Assorted. Flavors. (Plus Dep.). Bottled in Garland. Quart Bottle **10¢**
- Ranch Style Beans** Canned in Fort Worth. 15-oz. Cans **29¢**

## More Texas Products!

- Pork & Beans** Highway. 2 16-oz. Cans **25¢**
- Peanut Butter** Skippy. Creamy. 12-oz. Jar **44¢**
- Miracle Whip** Kraft. Salad Dressing. Made in Garland. Jar **41¢**
- Strained Honey** Burleson. Processed in Wazahochle. 8-oz. Jar **26¢**
- Margarine** Coldbrook. Solids. Made in Denison. 1-Lb. Pkg. **10¢**
- Morton Salt** \*Plate or \*Iodized. 34-oz. Pkg. **2/23¢**
- Texize Cleaner** Spring Scent. 15-oz. Bottle **39¢**
- Tomato Soup** Campbell. Canned in Paris. 10 1/2-oz. Cans **13¢**
- Barbecue Beef** Ireland's \*Chipped \*Sliced. Canned in Wichita Falls. 15-oz. Can **79¢**
- Pork & Beans** Von Camp. Canned in Dallas. 16-oz. Can **15¢**
- Blackeye Peas** Libby. Canned in Athens. Ga. 15-oz. Can **18¢**
- Imperial Sugar** \*Dark Brown or \*Light. Packed in Segorland. 1-Lb. Pkg. **18¢**
- Zippy Pickles** \*Sour or \*Dill. 32-oz. Jar **37¢**
- Ice Cream** Snow-Star. Assorted Flavors Made in Dallas. 1/2-Gallon Carton **63¢**

- Rath Bacon** \*Rath Black Hawk or \*Safeway. Sliced. 1-Lb. Pkg. **69¢**
- Thick-Sliced Bacon** Safeway. 2-Lb. Pkg. **\$1.38**
- Smorgas Pak** Eschrich. 4 Varieties in Pkg. 1-Lb. Pkg. **89¢**
- Pork Roast** Fresh Butt Cut. 1-Lb. **49¢**
- Pork Steak** Fresh Butt Cut. 1-Lb. **59¢**
- Pork Chops** Quarter Sliced Loin. 1-Lb. **69¢**
- Pork Spareribs** 3 to 8-Lb. Average. 1-Lb. **55¢**
- Sausage** \*Oven's Whole Hog. \*Regular. \*Hot or \*Extra Mild. (2-Lb. Pkg. \$1.38) 1-Lb. Pkg. **69¢**
- Link Sausage** Safeway. Pork. 1-Lb. Pkg. **59¢**
- Sliced Picnic** Smoked. \*Half or \*Whole 1-Lb. **45¢**

## Safeway Special!

**Cake Mix** 29¢  
Pillsbury. Assorted. For Perfect Cakes. Reg. Pkg.

## Safeway Big Buy!

**Flour** 39¢  
Harvest Blossom. All-Purpose. 5-Lb. Bag

## Safeway Special!

**Catsup** 19¢  
Hunt's. Regular. Rich Tomato Flavor. 14-oz. Bottle

## Safeway Special!

**Chunk Tuna** 25¢  
Sea Trader. Light Meat. 6 1/2-oz. Can

## Top Quality Meats!

**Boneless Roast** 78¢  
\*Chuck or \*Shoulder  
USDA Choice Heavy Beef. —Lb.

**Rib Steaks** 88¢  
USDA Choice Grade Heavy Beef. —Lb.

**Arm Roast** 68¢  
Full Cut. USDA Choice Grade Heavy Beef. —Lb.

**Ground Beef** 98¢  
Safeway Handy Chub Pak. 2-Lb. Chub

USDA Inspected Grade "A"  
**FRYERS** 29¢  
Ready-to-Cook. Everyday Low Prices! Whole. —Lb. (Cut-Up... Lb. 35¢)

## Texas Finest Produce

**Potatoes** 39¢  
Red. US No. 1 A. Grown in Hereford. 10-Lb. Bag

**Yams** 29¢  
Golden Sweet Meat. Grown in Dallas and Grand Saline. 2 Lbs.

**Cabbage** 7¢  
Green firm heads. Grown in Hereford. —Lb.

**Carrots** 23¢  
Grown in Hereford. 2 1-Lb. Cellos

**Como Toilet Tissue** 25¢  
\*White or \*Assorted 4-Roll Colors. Safeway Special! Pkg.

**Cucumbers** 3 for 25¢  
Grown in Dallas and Hereford. Fancy Crisp. Each

**Bell Peppers** 3 for 25¢  
Grows in Dallas and El Paso. Large Head. —Each

**Lettuce** 19¢  
Large Head. —Each

**White Bread** 49¢  
Mrs. Wright's. Sliced. \*Regular or \*Sandwich 2 1/2-Lb. Loaves

Prices Effective Thurs., Fri. and Sat., Oct. 10, 11 and 12, in BRYAN. We Reserve the Right to Limit Quantities. No Sales to Dealers.



**SAFeway**

© Copyright 1960, Safeway Stores, Incorporated.

WRECK TECH