

Senate Passes Gun Law, Rejects Arms Registration

GREYHOUND BUS LINES
1300 Texas — 823-8071

Inexpensive Charter Service for Student Groups or Classes. Group Accommodations Arranged.

GREYHOUND



Call 822-1441
Allow 20 Minutes
Carry Out or Eat-In

THE PIZZA HUT
2610 Texas Ave.

- | | |
|-----------------|---------------------|
| Decals | Pocket Books |
| Bumper Stickers | Billiards |
| Comic Signs | Pin Ball |
| Party Records | Third National Bank |
| Comic Records | Aggie Theatre |
| Popular Albums | Pin-Ups |
| Magazines | Novelties |

We cash aggie checks

AGGIE DEN

Open 8 a. m. till midnight 7 days weekly

WASHINGTON (AP)—The Senate passed Wednesday a bill to ban interstate mail order sales of rifles and shotguns.

It rejected proposals for firearms registration and the licensing of owners.

The vote on passage was 70 to 17.

The bill is similar to a measure passed by the House on July 24. A Senate-House conference committee is expected to have little difficulty in agreeing on a final draft.

The legislation goes only part way to carry out President Johnson's recommendations for tightened firearms controls.

The Senate rejected a series of moves to write in some form of licensing and registration of firearms.

Johnson had strongly urged Congress to include such a provision but both the Senate and House rejected this.

The measure extends to rifles and shotguns the ban on interstate mail order sales provided for handguns in the Crime Control and Safe Streets Act passed by Congress earlier in the year.

The Senate bill not only outlaws mail order sales of all firearms but also of ammunition for shotguns, rifles, handguns and other destructive devices.

It also prohibits over-the-counter sales of firearms to non-residents of a state. However, a person in one state may make a purchase in an adjoining state if this is legally permissible in both states.

Sales of rifles and shotguns to persons under 18 years of age would be banned. The anticrime legislation passed earlier bars sales only of handguns to persons under 21.

A&M Faculty To Sprint Away Pounds

G. Rollie White Coliseum again becomes the dumping ground for excess waistline and pounds Wednesday when the A&M faculty staff "run for lunch" program resumes.

Dr. John M. Chevrette, program director from the Health and Physical Education Department, said an orientation session will meet at noon Tuesday in the coliseum bleachers.

He said the daily physical fitness program was enthusiastically received last year. It will be continued and expanded.

"The various types of exercise to be conducted from 12 noon to 1 p.m. weekdays will be adjusted to individual levels and needs," the assistant professor noted. Chevrette will be present each day to supervise activity.

Information about the program, equipment, lockers and showers will be available at the Tuesday meeting or by phoning Chevrette, 845-6842.

Arts Committee Seeks Members

The Contemporary Arts Committee of the MSC is looking for student leaders interested in bringing to A&M a diversity of good art in the form of painting, sculpture, design, music, the performing arts, literature and film.

Persons wishing to direct their knowledge and labors to such ends should contact Tom Ellis, Box 5191, C.S., or submit an application describing their interests, address and scholastic standings. Applications can be turned in to the Contemporary Arts Box in the Student Programs Office of the MSC.



LUNCH SUBSTITUTE

Texas A&M faculty-staff members will upstage even dining table "push-aways" when the Health and PE Department's "run for lunch" program starts again Wednesday. Organization of the physical conditioning sessions Tuesday emphasized that participants will take individualized exercise adjusted to their levels and needs.

Bulletin Board

THURSDAY
Texas A&M Sports Car Club meets in YMCA Reading Room at 7:30 p.m. to elect officers.

San Angelo-West Texas Home-town Club meets at 7:30 p.m. in Room 3D of the Memorial Student Center.

MONDAY
Physics Club will meet after Yell Practice in Room 331 of the Physics Building. Ideas for first annual project will be discussed.

TUESDAY
American Society of Civil Engineers meets at 7:30 p.m. in Room 121 of Civil Engineering Building.

Friday Night at G. Rollie White Coliseum is.... Perfection!

The Danish Gym Team, 1968-69, organized and directed by Erik Flensted-Jensen, opens the TAMU "Special Attractions" for 1968-69, at 8:00 p. m., Sept. 27.



Artistry

The program includes a variety of Modern Rhythmic Gymnastics for Girls and Boys, Vaulting and Tumbling, Folk Dances in colorful native costumes etc.

Precision

There is no doubt that it was the finest exhibition of its kind which we have ever seen on our campus. The delicate artistry in the dance and flawless performance of precision gymnastic drills was beyond belief of any one who has not seen them.

Francis B. McGarry, Dept. of Instruction, East Stroudsburg State College, Penna.



Dance

By all accounts, the Danish Gym Team which visited Louisiana State University recently was about the finest group of its kind that ever came to this country. In addition to the usual gymnastic feats, spectators were treated to a bit of ballet, a bit of folk dancing, and quite a lot of real artistry in a performance by a handsome and talented group of young people.

Morning Advocate, Baton Rouge, Louisiana.



and its for Everyone!

General Admission BALCONY ONLY tickets will be sold after 9:00 a. m., September 16, 1968, Student Program Ticket Office, Memorial Student Center, College Station, Texas. NO RESERVED SEATS WILL BE AVAILABLE. Telephone reservations will not be accepted—other information may be obtained by calling 845-4671. Mail orders will be accepted if accompanied by a self-addressed stamped envelope.

- A&M Students \$1.00
- A&M Student Date or Spouse \$1.00
- Faculty or Staff, A&M System \$2.00
- Patrons \$2.00
- Other Students \$1.50

SAFEWAY



Peanut Butter
Real Roast. Safeway Special!

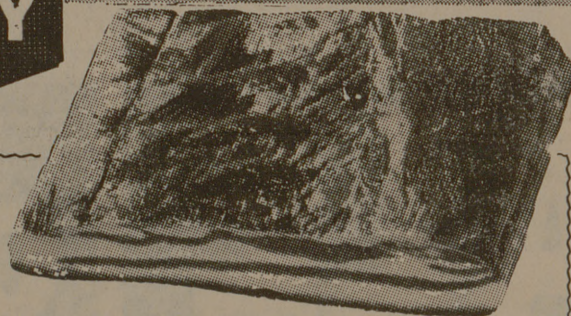
18-oz. Jar **45¢**

Enriched Flour
Harvest Blossom. Safeway Big Buy!

5-Lb. Bag **39¢**

Shortening
Velkay. Safeway Big Buy!

3-Lb. Can **49¢**



Slab Bacon

Smoked. Rind-On. 8 to 12-Lb. Average. By the piece. (Sugar-Cured Slab Sliced Rindless. —Lb. 59¢) —Lb. **49¢**

- | | | | |
|-------------------------|----------------------|------|------------|
| Chuck Roast | Baby Beef. | —Lb. | 55¢ |
| Chuck Steak | Full Cut. Baby Beef. | —Lb. | 65¢ |
| Crown Roast | Full Cut. Baby Beef. | —Lb. | 69¢ |
| Rib Steak | Baby Beef. | —Lb. | 89¢ |
| Short Ribs | Baby Beef. | —Lb. | 29¢ |
| Boneless Brisket | Baby Beef. | —Lb. | 79¢ |

Top Quality and Variety in Meats, Always at Safeway!

Canned Picnics \$1.99

Samuel's Mohawk. "Tender, Lean" —3-Lb. Can

Boneless Roast 79¢
★ Chuck or ★ Shoulder. USDA Choice Grade Heavy Beef. —Lb.

Arm Roast 79¢
Full Cut. USDA Choice Heavy Beef. —Lb.

Swiss Steak 85¢
Arm Cut. USDA Choice Heavy Beef. —Lb.

- | | | | |
|---------------------------|-----------------------------------------------|-------------|---------------|
| Chuck Steak | Full Cut. USDA Choice Grade Heavy Beef. | —Lb. | 65¢ |
| Sliced Bacon | Safeway. | 1-Lb. Pkg. | 69¢ |
| Thick-Sliced Bacon | Safeway. | 2-Lb. Pkg. | \$1.38 |
| Chicken Hens | 4 to 7-Lb. Average. USDA Inspected Grade "A". | —Lb. | 39¢ |
| Ground Beef | Safeway. Heady Chub Pak. | 2-Lb. Chub. | \$1.05 |
| Hamburger Steaks | Ready to Grill. | —Lb. | 59¢ |



FRYERS 29¢

Fancy Whole. Ready to Cook! USDA Inspected Grade "A". Everyday Low Price! (Cut-Up Fresh or Frozen. —Lb. 35¢) (Fryer Backs Fresh. Box 79¢)—Lb.

- | | | | |
|------------------------|----------------------------------------------|-------------|------------|
| Pork Roast | Fresh Picnic Cut. Whole. | —Lb. | 39¢ |
| Pork Spareribs | 3 to 5-Lb. Average. Medium Size. | —Lb. | 55¢ |
| Pork Chops | Quarter Sliced Pork Loin. | —Lb. | 69¢ |
| Pork Sausage | Safeway. Jumbo. ★ Regular or ★ Thick-Sliced. | 2-Lb. Pkg. | 89¢ |
| Sliced Bologna | Safeway. | 1-Lb. Pkg. | 63¢ |
| All Meat Franks | Safeway. | 12-oz. Pkg. | 49¢ |

Cane Sugar

Candi Cane Safeway Special! 5-Lb. Bag **39¢**
(With \$5.00 or more purchase excluding cigarettes).

Chunk Tuna

Sea Trader. Light Meat Safeway Special! 6 1/2-oz. Can **25¢**

Cling Peaches

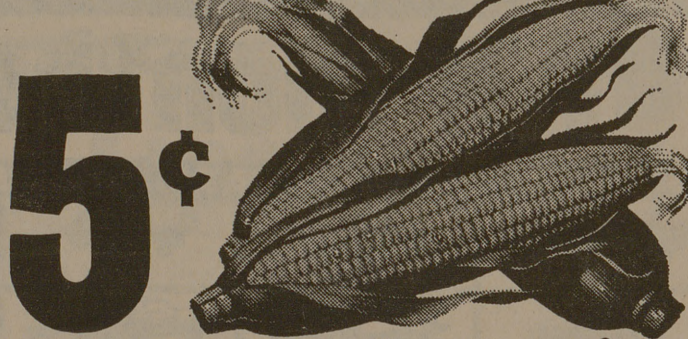
Del Monte. ★ Sliced or ★ Halves Safeway Special! 29-oz. Can **29¢**

Kleenex Tissues

★ White or ★ Assorted Colors Safeway Special! 200-Ct. Box **24¢**

CORN

Large Full Ears. Sweet and Tender, for broiling or roasting.



5¢ —Each Ear

- | | | | |
|----------------------|------------------------------------------------------------------|-------|------------|
| Grapes | Thompson Seedless. Extra Fancy. (Also ★ Tokays ★ Black Raisins.) | —Lb. | 19¢ |
| Bananas | Safeway Special! | 2 Lb. | 25¢ |
| Pascal Celery | Large tender stalks. | —Each | 19¢ |

- | | | | |
|------------------------|----------------------------------------|-----------|------------|
| Green Onions | or Radishes. Fresh crisp bunches. Each | 2 for | 25¢ |
| White Onions | Medium size. US No. 1. | 2 Lb. | 29¢ |
| Jonathan Apples | Fancy. Lunchbox Size. | 2-Lb. Bag | 59¢ |

Look What \$1.00 Buys!

- | | |
|------------------------------|----------------------|
| ★ Tomato Juice 18-oz. Can | ★ Veg-All 16-oz. Can |
| ★ Golden Corn 14-oz. Can | Mix or Match |
| ★ Libby Peas 17-oz. Can | Green. Garden Sweet. |
| ★ Green Beans 16-oz. Can | Town House. Cot. |
| ★ Sauerkraut 14-oz. Can | Del Monte. |
| ★ Apple Sauce 16 1/2-oz. Can | Mission. |
| ★ Diced Carrots 16-oz. Giant | Del Monte. |
- 5 \$1** for

- | | |
|-------------------------|--------------------------------------|
| ★ Tide 20-oz. Box | ★ Bold 20-oz. Box |
| ★ Cheer 20-oz. Box | Liquid. 12-oz. Plastic |
| ★ Joy 12-oz. Plastic | Your Choice! |
| ★ Thrill 12-oz. Plastic | Procter & Gamble Detergent. Special! |
- 3 \$1** for

Crisco Oil

Finest Vegetable Oil. Safeway Special! 24-oz. Bottle **39¢**

Orange Juice

Bel-air. From Florida. (3—12-oz. Cans \$1) Safeway Special! 6-oz. Cans **6 \$1**



Potatoes 59¢
Russet. US No. 1 "A". Good at any meal. —10-Lb. Bag



SAFEWAY