

# Aggie Nine To Meet Longhorns In Showdown Series

**By GARY SHERER**  
The Southwest Conference baseball title is riding on the outcome of this weekend's two-game Aggie-Texas series at Austin. Unfortunately for the Maroon and White, they will not win the title, regardless of what happens. The controversial no-rescheduling rule that the SWC people came up with this season will rob the Aggies of a chance at the title.

**EVEN IF THE** Aggie nine takes both games, it will leave them with a 12-5 record or one half game behind Texas Christian at 13-5 (TCU has finished their season). This situation has occurred because of the rained out game of April 9 between the Aggies and Baylor. Under the

new ruling, the game was not rescheduled. So, Coach Tom Chandler's charges will go into this series with the chance to do only one thing—stop Texas from winning the championship! Though it is unfortunate that the Maroon and White can't be considered for the title, it still will be gratifying to knock Texas out of contention. One or two Aggie victories will stop Texas.

If the Aggies split the two games, the one victory will be enough to eliminate Texas. If Texas splits the two game series, they will finish at 13-5 or a tie with TCU. Now, Texas would not go to the NCAA playoffs because TCU won the Texas series 2-1, thus TCU would go to the

pitchers are both sophomores. James Street and Larry Hardy, both righthanders will get the starting nods from Gustafson. Street, from Longview, was the losing pitcher in the two team's first meeting this season. The Aggies won the game 1-0 in a NCAA's.

**TWO WINS** for the Aggies would leave Texas at 12-6 and then TCU would go outright. Therefore, the pressure is on the Longhorns as Friday and Saturday get nearer.

It will be a tough pill to take for the Aggies, however, should

they sweep or split the Texas series. A sweep of Texas would mean that the Aggies had gone 6-0 against the two present contenders for the title (the Aggies swept the TCU series). A loss or two losses would still give the Aggies a winning record against the two teams.

Because of this, Texas Coach Cliff Gustafson, in his first year at Texas, will send his two top pitchers against the Aggies. A hint to Texas' future hopes in baseball is seen, when the two top squeaker played at Bryan's Travis Park.

**HARDY**, a fastballer from Houston, struck out 17 Rice Owls in the Longhorn's last SWC game. The performance tied a league record. Hardy, who is 3-0 in SWC play, will probably get the call Saturday with Street (5-2) going Friday.

Chandler will most likely counter with Rick Schwartz (3-2) in the 3 p.m. Friday game and come back with lefthander Doug Rau (2-1) in the 2:30 p.m. Saturday contest.

The Aggies, who have become the best hitting team in the league this spring, will have their bats put to a true test by the talented Street and Hardy.

In SWC stats, six regulars are hitting over .300, led by second baseman Pete Maida's .394. Catcher Joe Staples trails Maida at .391 followed by Dave Elmen-

dorf at .364, Jim Raley at .353 and Terry Dailey and Bob Long at .340 and .328, respectively. Outfielder Bob Arnold is just under .300 at .293. The other regular, Boyd Hadaway, had been the club's most consistent hitter earlier in the season but has been in a slump lately.

**THE AGGIES'** hitting has led them to a 21-7 mark and the best overall record in the conference. Texas and TCU are 20-8.

Third-baseman Dailey leads the season hitting with a .394 mark. The Blinn JC transfer has really come on in the last two weeks with his hitting. Elmen-dorf and Staples are at .324 and .321 while Arnold and Maida complete the above .300 hitters at .313 and .303, respectively.

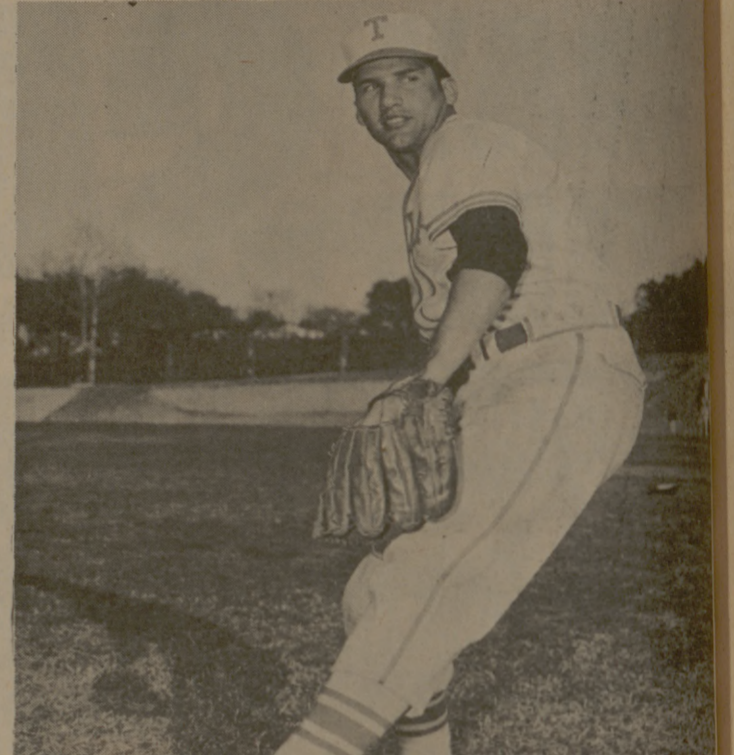
The Aggie pitching shouldn't be overlooked either, as their season earned run average is a fine 2.52. Rocky Thompson, who has turned into the top reliever this season, has the best ERA at 1.58 for the season and 2.12 in the SWC. Thompson will be ready to go both days should Schwartz or Rau falter.

Schwartz has a 2.39 ERA for the conference while being 2.40 for the season. Rau, while 2.19 for the season, has a 3.75 norm for SWC games.

So, the two teams look evenly matched. The Aggies have the better

hitting, while the Longhorns have the edge in pitching. Austin's historic 'stone fence field' Clark Field should draw some big crowds for both games.

Whatever happens, the unfortunate upshot of the new rule probably bring about an amazing order so that this sort of thing won't happen again.



**JAMES STREET**  
Texas sophomore from Longview will probably get the starting call against the Aggies in Friday's opening game of the two game series at Austin.

## San Antonio May Host NAIA Soccer

St. Mary's University may be the host this year of the National Association of Intercollegiate Athletics (NAIA) national soccer championships.

Clifford McCrath, president of the NAIA Soccer Coaches Association, and Dr. Charles Matlack, immediate past president, were in San Antonio last Friday exploring the possibilities of holding the championships in the Alamo City. They said they definitely want to bring them here, if the necessary sponsors and a place to play can be found locally.

The two NAIA representatives met with Virgil Dietrich of the San Antonio Chamber of Commerce, St. Mary's athletic director Elmer Kosub, St. Mary's sports information director Gary Gossett, Buck McCarty of the San Antonio Lions Club, head coach and general manager Duncan McCauley and Public Relations director Jerry Biehl of the San Antonio Toros, and Nelson Wolfe of the San Antonio Sports Association.

"We feel San Antonio would be an ideal place for the championships", McCrath said. "It is centrally located between East and West coasts, and has a climate that, more than any other major city, could assure us of playing the games."

The most important things needed to bring the championships here, according to McCrath, are sponsors and a place to play. The San Antonio Lions Club, San Antonio Sports Association and the San Antonio Toros all expressed interest in the idea, and indicated they might underwrite the tournament, provided their respective boards of directors approve the plan.

Total cost of the tournament, McCrath said, would run in the neighborhood of \$25,000 to \$35,000, including food, lodging and local transportation for the competing athletes. Much of this could be regained through ticket sales and concessions, the proceeds of which would go entirely to the sponsoring organization or organizations.

Named as possible sites for the tournament were St. Mary's V. J. Keefe Field, which seemed the most desirable to the NAIA representatives, and Edgewood Stadium. Coach Kosub said Keefe Field could be converted into a soccer field without too much difficulty, and Edgewood Stadium—where high schools in the Edgewood Independent School District play their home football games—is suitable for soccer in its present state.

If the tournament is brought here, McCrath said it would involve eight soccer teams from throughout the country.

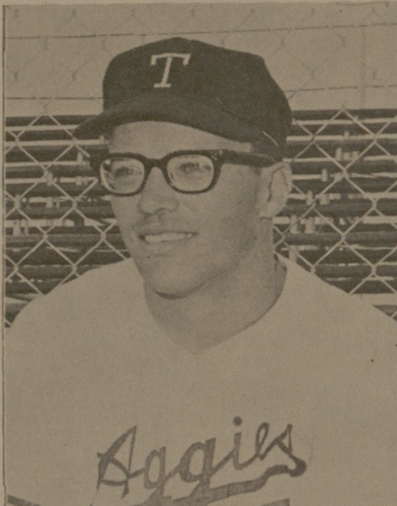
"In the past", he said, "we have had only four teams in our tournaments, but we would like to expand the size of the field to eight."

"This would definitely be done if the tournament is moved to San Antonio."

Tournament teams would come from NAIA member schools, and would win their way into the championships through a series of regional eliminations. Outstanding soccer teams from areas without an organized conference

might be invited as at-large representatives, provided their records warranted such an invitation.

The tournament would be played in November, over the Thanksgiving Holidays, in order to keep from interfering with the players' studies any more than necessary. It would be a four-day affair.



**BOB ARNOLD**  
Hitting .313 in SWC play.

**LOW PRICES EVERY DAY Plus SPECIALS!**  
5 BIG RACES Every Week! \* SHOP! COMPARE! SEE HOW YOU SAVE AT SAFEWAY



Safeway Fresh Fruits and Vegetables!

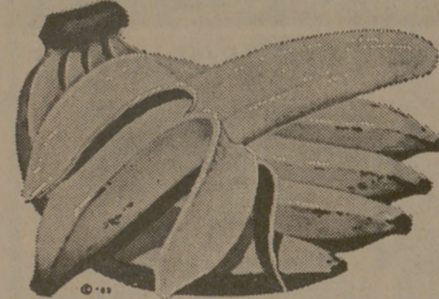
**Strawberries** 3 Pint Full Baskets \$1  
Sweet, Luscious Berries.

Oranges Valencia. 4-Lb. 49¢ Okra New Texas Crop. —Lb. 39¢  
Rhubarb Crimson. Extra Fancy. —Lb. 29¢ Artichokes Large Size. 2 for 29¢

Hass Avocados Large Size. —Each 23¢  
Cucumbers Crisp. 2 for 29¢  
Lettuce \* Romaine \* Boston \* Red \* Endive \* Leaf 2 for 49¢

Vertagreen Lawn Food  
Regular 5-10-Lb. Bag \$3.89 With Discolor. 5-10-Lb. Bag \$3.89  
Texas Turf Lawn Food. 30-Lb. Bag \$3.89  
Any TWO Bags . . . 2 for \$7.60

Golden Ripe Bananas  
Everyday Low Price!  
2 Lbs. 29¢



Large 'A' Eggs  
Breakfast Gem.  
—Dozen 39¢  
Why Pay 45¢

IRISH INTERNATIONAL  
**Steeplechase**  
SWEEPSTAKES  
PROGRAM #316

Charcoal Briquets Ozark. Special! 20-Lb. Bag 99¢  
Barbecue Sauce Open Pit. Big Buy! 18-oz. Bottle 43¢  
Libby Peaches \* Reg. or \* Hickory Yellow Cling. Low Calorie. \* Halves \* Sliced. Special! 4 16-oz. Cans 89¢  
Green Beans Stokely. Cut. Special! 4 15 1/2-oz. Cans 89¢  
Stokely Corn Cream Style Golden. Special! 5 17-oz. Cans \$1.00  
Powdered Milk Lucerne. Special! 8-qt. Pkg. 69¢

Boneless Roast 77¢  
\* Chuck or \* Shoulder. USDA Choice Heavy Beef (Arm Roast Full Cut. USDA Choice Heavy Beef—Lb. 79¢) Lb.

Canned Picnics 3 Lb. Can \$1.88  
Samuel's Mohawk.

Smoked Picnics Samuel's Mohawk. 6 to 8-Lb. Avg. Whole. 35¢  
Sliced Picnics Smoked. Half or Whole. —Lb. 39¢  
Rath Franks Rath's Black Hawk. —Lb. 57¢  
Grade 'A' Turkeys Heavyweight. Small. —Lb. 49¢  
Canned Ham \* Samuel's Mohawk. 5 Lb. \$4.49 or \* Swift.

Ground Beef 49¢  
Safeway's Lean and Juicy. —Lb.



Prices Effective Thurs., Fri. and Sat., May 9, 10 and 11, in Bryan. We Reserve the Right to Limit Quantities. No Sales to Dealers.

Salad Dressing  
Piedmont.  
Quart Jar 37¢  
Safeway's Big Buy!

Preserves  
Empress. Special!  
\* Seedless Blackberry  
\* Apricot-Pineapple  
\* Apricot \* Peach  
\* Peach-Pineapple  
\* Strawberry  
20-oz. Jar 49¢

Compare Frozen Food Values!  
Ice Cream 59¢  
Snow Star. Assorted Flavors. Special! 1/2-Gal. Carton  
Banquet Dinners Assorted. Big Buy! Reg. Pkg. 39¢  
Shoestring Potatoes Scotch Treat. 2-Lb. Bag 35¢

Clorox Bleach  
Liquid.  
1/2-Gal. Plastic 29¢  
Safeway Special!

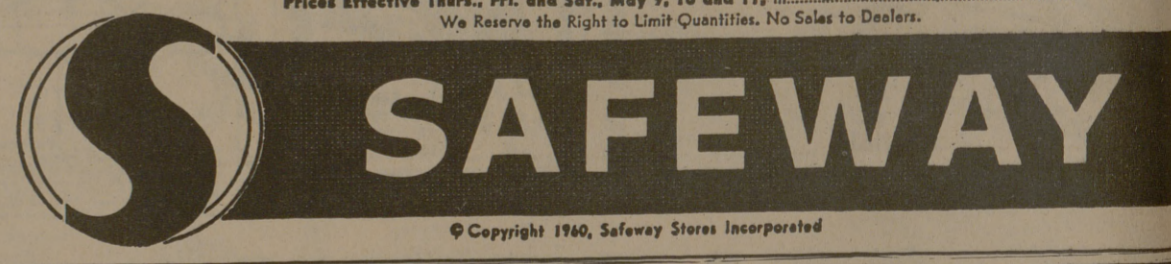
Hunt's Catsup  
Regular. Tomato Flavor.  
14-oz. Bottle 19¢  
Safeway Special!

Safeway Coffee  
Pre-Ground. (2-Lb. Bag 98¢)  
1-Lb. Bag 49¢  
Safeway Special!

Dust Pans  
Plastic. Safeway's Big Buy!  
—Each 10¢

Ranch Style Beans  
Old West Flavor.  
23-oz. Can 19¢  
Safeway Special!

Soft Drinks  
Cragmont. Assorted Flavors.  
Quart Bottle 10¢  
Safeway Special!



**SAFEWAY**  
© Copyright 1960, Safeway Stores Incorporated

**AIRLINE** Reservations and Tickets At No Extra Cost . . . Free Ticket Delivery  
. . . 30 Day Charge Account . . . Bonded ASTA Agent



Call Beverley Braley . . . Tours . . . Travel

MSC TRAVEL OFFICE 823-0961

