

Read Classifieds Daily

BUSIEK AGENCY
REAL ESTATE • INSURANCE
F.H.A.—Veterans and Conventional Loans
FARM & HOME SAVINGS ASSOCIATION
Home Office: Nevada, Mo.
3523 Texas Ave. (in Ridgcrest) 846-3708

—ELECT—
J. T. CROSS
"Jim"
State Representative District 18
AGGRESSIVE - MATURE - RELIABLE
Political Ad Paid For by J. T. Cross

DO YOU KNOW...
That starting a College Career Plan now guarantees you a low premium rate until the plan is paid up at age 65!
American Amicable
LIFE INSURANCE COMPANY
EXECUTIVE OFFICES, WACO, TEXAS
B. L. Rychlik C.L.U.
Oakwood Professional Bldg. Bryan, Texas VI 6-7963

E. E. Department Hosts Conference

Approximately 250 engineers from throughout the United States and several foreign countries will attend the annual Conference for Protective Relay Engineers here April 22-24.

The Department of Electrical Engineering of Texas A&M will host the meetings. Dr. W. B. Jones, Department Head, will give the address of welcome.

Purpose of the conference is to provide opportunity for discussion of problems by persons interested in the design, application and operation of protective relay equipment as applied to electrical transmission lines and electrical machinery, Prof. L. M. Haupt, program chairman, said.

A. D. Patton, of the host faculty, will be chairman of the opening session. Other session leaders are D. P. Inwood, General Electric, Houston; C. C. Anderson, Austin; G. Holman King, West Texas Utilities, Abilene, and John Ragland, Lubbock.

The list of speakers includes John R. Wilson, General Electric, Dallas; Wayne B. Hanson, Houston Lighting and Power; G. W. Hampe, Chicago; W. C. Kotheimer, General Electric, Schenectady, N. Y.; G. D. Rockefeller, Westinghouse, Newark, N. J.; Ted L. Hatcher, Texas Power and Light, Dallas; D. G. Zimmerman, Dow Chemical, Plaquemine, La.; V. C. Rydeen, Northern States Power, Minneapolis, Minn.; M. M. Chen and L. E. Goff, General Electric, Philadelphia; Clyde Gilker, McGraw-Edison, Milwaukee; R. D. Chenoweth, Texas A&M; Jake M. Mabe, Central Power and Light, Corpus Christi; W. K. Sonnemann, University of Texas; J. M.

Massara, Allis-Chalmers, Milwaukee, Wis., and J. W. Skooglund, Westinghouse, Pittsburgh, Pa.

The Singing Cadets will perform Saturday evening, and Aggie quarterback Ed Hargett will speak at religious services in All Faiths Chapel Sunday morning.

Prizes Offered Math Students

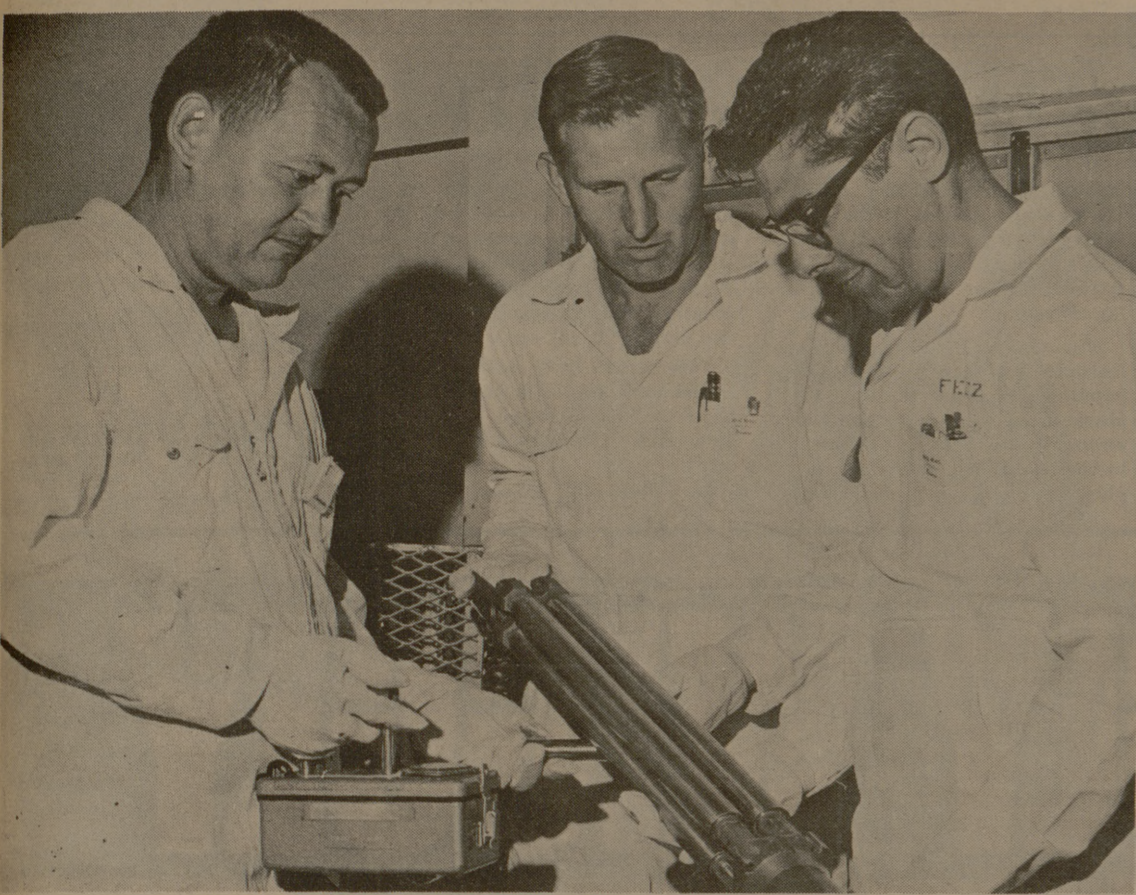
A wrist watch and cash prizes of \$10 and \$15 will be awarded to freshmen and sophomore students who place in the annual annual Mathematics contest examinations Tuesday, April 30.

The freshman two-hour exam will include questions pertaining to algebra, trigonometry, analytic geometry and calculus as high as the Math 121 level. The sophomore exam will be comprised of questions to the Math 307 level.

All freshman awards and second (\$15) and third (\$10) sophomore awards are provided by the Robert F. Smith Memorial Fund, established for Smith by the late John W. Mitchell, originator of the contest.

First prize (watch) for sophomores is furnished by the Halperin Award Fund, established through the estate of the late Prof. H. Halperin. Smith, Mitchell and Halperin were staff members in the Department of Mathematics.

The freshman exam will be in Room 223 and the sophomore exam will be in Room 225 of the Academic Building beginning at 7:30 p.m.



NUCLEAR REACTOR FUEL

Texas A&M Nuclear Science Center personnel check in one of 24 new triega fuel elements that will boost reactor power tenfold. Health physicist Phil Sandel (left) gives the stainless steel-jacketed zirconium-uranium alloys rods a once-over with the Geiger counter. NSC director Dr. John D. Randall and Donald E. Feltz, assistant director, hold the four-rod element. The new power source will undergo exhaustive test and measurements before the reactor resumes operation, at one megawatt.

24 New Fuel Elements Raise Nuclear Reactor Power Level

Texas A&M nuclear scientists rolled out the welcome mat for a "hot" arrival over the weekend.

The truck shipment contained powerful new fuel elements that will increase power of A&M's Nuclear Science Center reactor ten times.

Dr. John Randall, MSC director, and his staff checked in and stored the new triega fuel elements in special receptacles in the reactor "swimming pool."

Conversion to one million watts operation by installation of the 24 stainless steel tubes containing a zirconium-uranium alloy will follow licensing for the new power level by a division of the Atomic Energy Commission.

"The AEC is in the final stages of granting our license," Randall commented. "We will be given 15 days notification so experimenters can be informed of the pending shutdown."

The director said the reactor will be shut down about two to three weeks for the conversion from 100 watts to one megawatt operation.

"It will take about a week to tear down and modify the reactor for the new elements," he said. "Another week or so will be required to check out the unit, seeing that it conforms to specifications and predicted behavior."

He said intermittent operation and testing will follow for several months afterward.

At the new power capacity, experiments that now require 15 hours irradiation can be performed in an hour, Randall continued.

"The downtime will provide an adequate interval to upgrade experiments," he pointed out.

The new elements, manufactured by Gulf General Atomic Company, will allow steady operation at around one million watts and are capable of being "pulsed" to 1.5 billion watts for short intervals.

"Power will be increased by small increments," Randall noted. "One megawatt operation will probably be reached by gradual increases over a period of three months."

A large heat exchange system was previously constructed to accommodate heat generated at the new power level. Accessory equipment is on hand and under construction in the center machine shop.

A new feature to be incorporated in the reactor is a dashpot-type chamber for quick placement of fuel elements. Constricted flow of water will cushion the elements' gravity drop.

Precise measurement of the individual fuel rods will precede triega element installation. Special remote equipment and tools have been installed so center technicians can measure the rods through several feet of intervening water. Water will dampen any stray radiation.

"If, during the course of operation, a rod changes length by one-tenth thousandth of an inch, it can't be used any more," Randall explained.

Present fuel elements in the reactor core will be stored in a special container in the pool for a year until arrangements are made for shipping them to Oak Ridge for disposal.

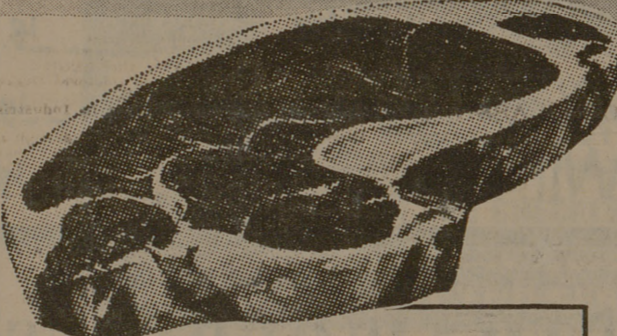
COMPARE SAFEWAY'S LOW, LOW PRICES

IRISH INTERNATIONAL

Steeplechase SWEEPSTAKES



thrilling races on TV
FREE NO PURCHASE REQUIRED ADULTS ONLY



Safeway Baby Beef Sale!

Shop Safeway for the Finest Quality Meats!

Sirloin Steak 85¢
Baby Beef. Waste-Free Trim. —Lb.

Round Steak 79¢
Baby Beef. —Lb.

Rump Roast 75¢
Baby Beef. (Pikes Peak Roast—Lb. 79¢) —Lb.

T-Bone Steak 98¢
Baby Beef. —Lb.

Chuck Roast 59¢ Full Blade Cut, USDA Choice Heavy Beef. —Lb.
Arm Roast 79¢ Full Cut, USDA Choice Grade Heavy Beef. —Lb.
Seven Steak 69¢ or Roast, USDA Choice Heavy Beef. —Lb.
New York Steak \$1.95 Boneless, USDA Choice Heavy Beef. —Lb.

Loin Roast 65¢ Pork, Full Rib Half, (Full Loin Half—Lb. 69¢) —Lb.
Pork Spareribs 69¢ Fresh, 1 1/2 to 3-Lb. Avg. —Lb.
Pork Steak 59¢ Fresh, Butt Cut. —Lb.
Canned Picnic \$2.29 Armour's Star, 3-Lb. Can

M-m-m Good!
Fryers 29¢
USDA Inspected ... Grade "A"
Everyday Low Price!
Whole —Lb.
(Cut-up ... Lb. 35¢)

Safeway Special!
Cling Peaches
★ Sliced
★ Halved. 4 29-oz. Cans \$1
Highway.

Safeway Big Buy!
Green Beans
Gardenside, Cut.
2 16-oz. Cans 25¢

Safeway Special!
Margarine
Coldbrook. 1-Lb. Pkg. 10¢
Solids.

Safeway Special!
Tomato Juice
Libby. 3 46-oz. Cans \$1

Safeway Special!
Biscuits
Mrs. Wright's. ★ Sweetmilk ★ Buttermilk (Limit 4). 8-oz. Can 5¢

Safeway Special!
Toilet Tissue
Charmin. ★ White or ★ Assorted Colors. 3 4-Roll Pkgs. \$1

Boneless Steak \$1.49
Top Sirloin, USDA Choice Heavy Beef. —Lb.
Ground Chuck 75¢
Lean Beef, Freshly Ground. —Lb.

Look What a Dime Will Buy!
★ Chopped Greens Highway.
★ Turnip or ★ Mustard—16 oz. Can
★ Hi C Drinks 12-oz. Can
★ Butter Beans 15-oz. Can
★ Golden Hominy 1 1/2-oz. Can
★ Early June Peas 13 1/2-oz. Can
★ Kobey Potatoes 2 1/2-oz. Can
★ Blackeye Peas Highway, Dry, 16-oz. Can
★ Navy Beans Lima—15-oz. Can
★ Kidney Beans Highway Dark Red, 15-oz. Can
★ Pinto Beans Highway—15-oz. Can

Your Choice Each **10¢**



Potatoes 49¢
Russet, US No. 1A. 10 Lb. Bag

Bananas 39¢ Golden Ripe. Special! 3 Lbs.
Lemonade 10¢ Scotch Treat, Regular, Big Buy! 6-oz. Can

Safeway Has Low, Low Prices!
Baby Food 12 1/2-oz. Jars \$1
Heinz, Strained Fruits or Vegetables.
Soda Crackers 19¢ Melrose. 1-Lb. Box
Tomato Soup 10¢ Town House. 10 3/4-oz. Can
Enriched Flour 39¢ Harvest Blossom. 5-Lb. Bag
Pooch Dog Food 8¢ ★ Regular or ★ Liver Flavored. 15 1/2-oz. Can
Paper Napkins 10¢ Silk, Assorted Colors. 60-Ct. Pkg.

Fresh Carrots 19¢ Safeway. 2 Lb. Cello Pkg.
Red Potatoes 23¢ New Crop, From Florida. 2 Lbs.
Crisp Radishes 10¢ 4-oz. Cello Pkg.
Avocados 29¢ Hass, Dark Skin, Large. Each
Strawberries 35¢ Plump, Juicy. Pint Fall Baskets

10¢ Off Cheese Sale!
10¢ Off the Regular Price of Each Package (12-oz. or More) Safeway Chunk Cheese.
★ Halfmoon Longhorn
★ Nippy Longhorn
★ Mild Cheddar
★ Sharp Cheddar ★ Swiss
★ Monterey Jack ★ Kuminost

Hot Dog Buns 19¢ 8-Ct. Pkg. Mrs. Wright's, Special!
Prices Effective Thurs., Fri. and Sat., April 18, 19 and 20, in BRYAN.
We Reserve the Right to Limit Quantities. No Sales to Dealers.

SAFEWAY
© Copyright 1960, Safeway Stores, Incorporated.