

Spring Sports

Tracksters Invade Austin For Giant Texas Relays

By JOHN PLATZER
Coach Charley Thomas' Aggie tracksters travel to Austin Friday and Saturday for the giant Texas Relays.

The 41st edition of the relays is considered to be one of the strongest ever. A total of 26 universities and 25 colleges are entered including such powers as Kansas, the Mexican National team, Missouri, Notre Dame, Grambling, Southern and Texas Southern University.

Among the individuals entered are Jim Hines, co-record holder in 100-yard dash, Charles Greene, who along with Tommie Smith holds the 220 mark, and the Aggie's record shattering shot putter Randy Matson. Hines has predicted a possible 9.0 time but his hope of being pushed to the performance by Greene was eliminated. Greene announced that he was not going to run in the 100 but rather would concentrate on his speciality.

Jim Ryun, world record miler from Kansas, also was to compete but a pulled hamstring muscle has forced him to the sidelines.

The Aggies will get their first chance to see all the other Southwest Conference schools in action in the relays this weekend. Because of the upcoming Olympics in Mexico City a special six-mile run has been added for Thursday at 4 p.m.

The track weekend officially opens Thursday night at 6:30 with a buffet dinner for coaches, officials and press in the Stephen F. Austin Hotel. The regular Friday season begins with prelims at 10 a.m. while the discus finals are at 12:30.

Finals in 17 events will be Fri-

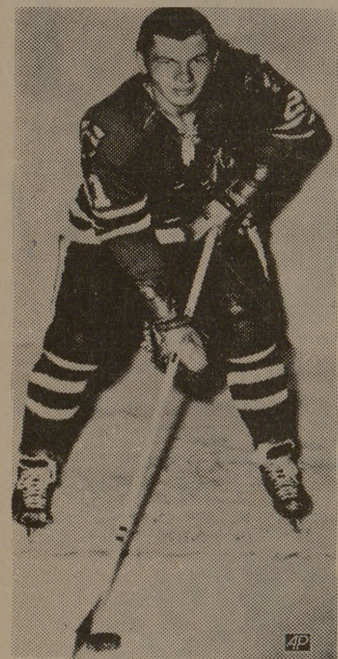
Peggy Fleming Signs Pro Pact

NEW YORK (AP) — Glamorous Peggy Fleming parlayed her Olympic gold medal into a gold mine Wednesday, signing a pro contract that should make her a millionairess in the next five years.

"Her potential is unlimited—she can become another Sonja Henie," said Bob Banner, West Coast television producer who joined with the National Broadcasting Co. in tying up the world's figure skating queen to what they called a long-term agreement.

The details were not immediately announced, but Peggy's new sponsors left no question that the sky is the limit.

She will begin her career in a TV spectacular next fall in a show produced over NBC by Bob Banner Associates.



SCORING CHAMP

This is Chicago Black Hawk scoring ace Stan Mikita who wound up on top of the heap in the National Hockey League for the fourth time in the past five years. Final season statistics showed Mikita as top scorer with 87 points on 40 goals and 47 assists. (AP Wirephoto)

day at 5:30 p.m. for field events and 7 p.m. for running events. The remaining 22 events will have finals in the field events at 12:30 and running events at 2 p.m. on Saturday.

The Aggies will bring the conference's best performers in the shot put and pole vault to the Relays.

George Resley tops the SWC shot putters with a top effort of 57-4, followed closely by teammate Ronny Lightfoot, and Martin Rollins' best of 16-1½ leads the conference's vaulters.

Tom Cilio, Curtis Mills, Scott Hendricks and Jack Abbott, the Aggie's 440-yard relay team has a best time of 41.1. This is good for the second spot in the conference behind Rice's 40.9.

GOLF

Surging Texas A&M, the defending SWC golf champions, are at home Saturday for a conference match with Arkansas on the A&M Golf Course.

Coach Henry Ransom's golfers are currently in the league's third spot behind Texas Tech and Baylor with a 12½-5½ mark. Neither Tech nor Baylor have been involved in as many matches as the Aggies.

Ag SWC Batting

Name	G	AB	R	H	Avg.	2B	3B	HR	TB	BI	PO	A	E	Avg.
Arnold, rf	5	10	5	5	.500	1	—	1	9	4	4	0	0	1.000
Staples, c	6	16	3	6	.375	—	—	—	6	2	48	—	—	1.000
Schwartz, lf	3	8	2	3	.375	2	—	—	5	2	0	3	1	.750
Elmendorf, lf	6	21	3	7	.333	2	—	—	9	3	12	1	0	1.000
Long, cf	6	22	3	7	.318	—	1	—	9	3	15	3	1	.947
Maida, ss	3	7	0	2	.286	—	—	—	2	—	—	3	—	1.000
Hadaway, rf	5	19	3	5	.263	1	—	—	6	—	9	—	—	1.000
Backest, 2b	5	13	1	3	.231	—	—	—	3	1	10	11	—	1.000
Thompson, p	3	5	1	1	.200	—	—	1	4	1	—	7	—	1.000
Dailey, 3b	5	12	0	2	.167	—	—	—	2	—	3	3	—	1.000
Stelley, 1b	3	7	1	1	.143	—	—	—	1	—	10	—	2	.833
Ghutzman, ss	5	12	0	1	.083	1	—	—	2	2	4	9	1	.929
Raley, 2b	4	12	2	1	.083	—	—	—	1	1	4	4	1	.889
Vaughn, 1b	6	16	2	1	.063	—	—	—	1	2	34	—	1	.971
Sanders, p	3	0	0	0	.000	—	—	—	—	—	—	3	1	.750
Larson, p	3	1	0	0	.000	—	—	—	—	—	—	1	—	1.000
Benesh, p	2	2	0	0	.000	—	—	—	—	—	—	1	—	1.000
Robins, 2b	2	1	0	0	.000	—	—	—	—	2	1	1	1	.750
Rau, p	1	1	0	0	.000	—	—	—	—	—	—	1	—	1.000
Walker, p	1	1	0	0	.000	—	—	—	—	—	—	1	—	1.000
Total, A&M	6	185	26	45	.243	7	1	2	60	21	156	51	10	.954
Total, Opp.	6	196	17	40	.204	7	0	1	50	13	153	66	8	.965

LOB: A&M 41, Opp. 49

Horse Show Opens April 6th

Selection of a grand champion stallion, mare, and gelding and a National Cutting Horse Association Championship open cutting horse contest will highlight the ninth annual Aggie Rodeo Club Quarter Horse Show April 6.

Judges for the show are Dr. Richard B. Warren, Animal Science Department, University of Nebraska, and O. H. Crew, Quarter Horse producer, Fort Worth.

Events are AQHA Youth Acti-

vity classes, halter classes, and performance classes, said Ronald H. Rae, horse show chairman.

Rae said awards include money paid in all performance classes as well as trophies to all first place winners and ribbons through six places. A high point award to the best all round Quarter Horse will be made.

To be eligible for the high point award, a horse must show in halter and a minimum of two regis-

tered performance classes, he said.

The show will start at 9 a.m. in the Aggie Arena, Rae said. In case of rain, the show will be moved to the Animal Husbandry Pavilion on campus.

Pre-show headquarters will be in the Sands Motel, Room 53 from 4 p.m. April 5 until 7 a.m. April 6. Rae said the show office will be moved to the arena at that time to facilitate show preparations.

DO YOU KNOW...

That your American-Amicable College Representative is currently enrolled in a nine years education and training program which is designed to help him serve you in the future!



American Amicable
LIFE INSURANCE COMPANY
EXECUTIVE OFFICES, WACO, TEXAS

Lloyd M. Sheffield

Oakwood Professional Bldg. Bryan, Texas VI 6-7963

GODFREY'S RESTAURANT

North Gate

New hours by Popular Request Are . . .

7 a. m. till 1 a. m.

Monday thru Thursdays

Featuring Specials

Live Music Occasionally

COMPARE SAFEWAY'S LOW, LOW PRICES

PLAY IRISH INTERNATIONAL Steeplechase SWEEPSTAKES™


PROGRAM 307 © Copyright Steeplechase Productions Ltd. All Rights Reserved. B.C.



FREE • NO PURCHASE REQUIRED • ADULTS ONLY



Safeway Special!



Cragmont

Asst. Flavors and Mixes (Plus Deposit) Qt.

10¢

Safeway Special!



Gold Medal Flour

49¢

—5-Lb. Bag

Safeway Special!



Banquet Dinners

Frozen. Assorted. —Regular Package

29¢

THE COLUMBIA ENCYCLOPEDIA

Complete 1-Vol. Edition SECTION ONE FREE! SECTION SIX This Week Only

99¢

Compare These Everyday Low Prices!

Golden Corn	Special! Tawa House—17-oz. Can	5¢
Peanut Butter	No Meds. * Creamy or * Chunky. Special! (2¢ Off Label)—12-oz. Jar (18-oz. 4¢ Off Label 31¢) (28-oz. 4¢ Off Label 71¢)	39¢
Salad Dressing	Big Buy! Piedmont—Quart Jar	37¢
Fruit Drinks	Big Buy! Cragmont * Orange or * Grape * Tropical Peach—46-oz. Can	4¢
Non-Fat Dry Milk	Lucerne. Instant. Special! (20-Quart)—4-Lb. Box	1.59
Modess	Sanitary Nappies. * Super * Regular. Special! * Van Form * Toesage—12-Ct. Bx	3¢
Chunk Tuna	Sea Trader. Special! Light Meat—6 1/2-oz. Can	4¢
Liquid Diet Food	Lucerne Slenderway. Assorted. 8-oz. Can	22¢

Compare Dairy-Deli Values!

Cottage Cheese	29¢
(32-oz. Ctn. . . 57¢) Lucerne. All Styles. Special!	—16-oz. Ctn.
Large "A" Eggs	45¢
Breakfast Coms. Grade A—Dozen	
Sliced American Cheese	59¢
Safeway. Slagly wrapped. —12-oz. Pkg.	
Longhorn Cheese	79¢
Safeway. Halfmass.	

Grade 'A' Turkeys

Young Toms. 17 to 24-Lb. Avg. USDA Inspected, Grade A.

29¢

(Hen Turkeys Young. 10 to 16-Lb. Avg. USDA Inspected, Grade A—Lb. 35¢) —Lb.

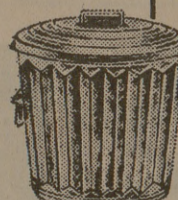
Boneless Roast	79¢
Chuck or Shoulder. USDA Choice Grade Heavy Beef—Lb.	
Swiss Steak	79¢
or Arm Roast. USDA Choice Grade Heavy Beef—Lb.	
Rump Roast	89¢
USDA Choice Grade Heavy Beef—Lb.	
T-Bone Steak	\$1.19
or Club Steak. USDA Choice Heavy Beef—Lb.	
Sliced Bacon	69¢
Both Muck Hawk or Safeway—1-Lb. Pkg.	
Ground Beef	\$1.05
Safeway. Club-Pak. 2-Lb. Pkg.	

Compare Bakery Values!

Raisin Bread	2 for 49¢
Skylerk. Lead. Special!—1-Lb. Loaf	
Biscuits	2 for 49¢
Skylerk. Homestyle. Special!—12-Ct. Pkg. 2-Ct. Pkg.	
Hot Cross Buns	29¢
Mrs. Wright's. 2-Ct. Pkg.	

Golden Ripe Bananas	9¢
Safeway Special! —Lb.	
Pascal Celery	19¢
Long Shank. Large Stalks. Extra Crisp—Stalk	
Pineapples	39¢
Sugarloaf. Large. Excellent Flavor. —Each	

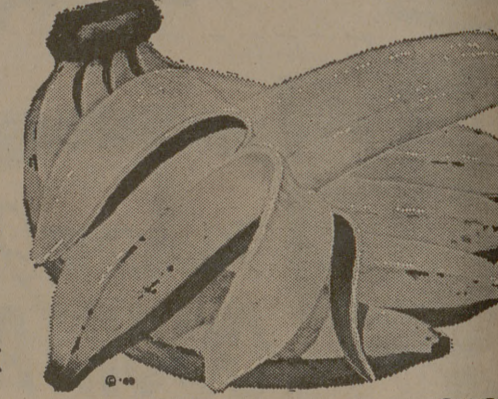
Check This Special!



Garbage Cans

Sealtite. With Lids. —20-Gal. Can

\$1.79



Grapefruit	2 for 29¢
Tawa Baby. Large—Each	
Juice Oranges	2 for 29¢
Valencia. Large. Fancy.	
Fresh Corn	2 for 25¢
From Florida. Full Berry—Each	
Crisp Radishes	10¢
6-oz. Collo Pkg.—Each	
Green Onions	10¢
Bunch—Each	
Fresh Asparagus	49¢
Tender. New Spring Crop—Lb.	
Red Potatoes	20 for 89¢
Economy.	
Waldorf Dates	39¢
16-oz. Pkg. or 12-oz. Non-Fitted. Year Choice—Each	

USDA Inspected and Grade A

FRYERS

Everyday Low Price! Whole. (Cut-up . . . Lb. 35¢) —Lb.

29¢

Fryer Halves	39¢
or Leg Quarters. Fresh—Lb.	
Breast Quarters	45¢
Fryer. Fresh—Lb.	




Prices Effective Thurs., Fri. and Sat., April 4, 5 and 6, in BRYAN. We Reserve the Right to Limit Quantities. No Sales to Dealers.

SAFEWAY

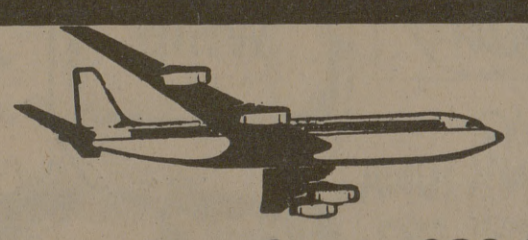
© Copyright 1960, Safeway Stores, Incorporated.

AIRLINE

Reservations and Tickets At No Extra Cost . . . Free Ticket Delivery . . . 30 Day Charge Account . . . Bonded ASTA Agent



Call Beverley Braley . . . Tours . . . Travel



Call Our New Reservation Center 823-0961