

Billy Kidd Injured

Miss Fleming Gives U.S. First Winner

GRENOBLE, France (AP) — Kidd fell on a training run and sprained his bad left ankle. Peggy Fleming's artistic skating legs got the United States off to an exhilarating start Wednesday, but the ankles of skier Billy Kidd and hockey forward Craig Falkman soon turned the Americans' Olympic cheer into gloom.

After Italy's Franco Noones stunned the Nordic ski world by winning the 30-kilometer cross country race for the Winter Games' first medal, Miss Fleming started on the way to a gold medal of her own by spinning to a commanding lead in women's figure skating.

The 19-year-old world champion from Colorado Springs, Colo., completed the first two of five compulsory figures with 373.4 points for a 30.4-point lead over her chief rival, Gabrielle Seyfert of East Germany.

But that was all the U. S. partisans had to shout about for the rest of the day. First, American hopes for a medal in the men's downhill ski race were damaged severely when

Then thoughts of a longshot chance at a hockey medal were obliterated when Falkman dislocated his right ankle and the U. S. dropped a 4-3 decision to Sweden for its second loss in as many starts.

Falkman, a 24-year-old salesman from Golden Valley, Minn., was out of the Games, but Bob Beattie, coach of the U. S. skiers, wasn't certain about Kidd's status for Thursday's downhill.

"Billy's all but out of it," Beattie said after examination as he disclosed the 24-year-old Stowe, Vt., ace had suffered a sprain.

Kidd himself preferred to look at his situation optimistically, saying: "It's okay. There was no break, and I hope to be able to race in the downhill."

Kidd, who injured the same ankle and broke his left leg in 1966, fell at about the third check gate when he either caught an edge of his ski or a binding opened accidentally.

Aggie Cage Stats

Table with columns: Player, G, FG-FGA, Pct., FT-FTA, Pct., Miss, Reb-Avg, Pf-D, Pts., Avg., High, Game. Lists stats for Ronnie Peret, Billy Bob Barnett, Johnny Underwood, Mike Heitmann, Harry Bostic, Terry Trippet, Sonny Benefield, Mike Hazel, Oliver Biggers, Bill Brown, Byron Chandler, Buzzy Myatt, Larry Ditto.

Team Rebounds table with columns: Team, A&M, FOES, FG-FGA, Pct., FT-FTA, Pct., Miss, Reb-Avg, Pf-D, Pts., Avg., High, Game.

SWC (W 3, L 4) table with columns: Player, G, FG-FGT, Pct., FT-FTA, Pct., Miss, Reb-Avg, Pf-D, Pts., Avg., High, Game. Lists stats for Peret, Underwood, Barnett, Heitmann, Bostic, Benefield, Hazel, Trippet, Biggers, Chandler, Brown.

Team Rebounds table with columns: Team, A&M, FOES, FG-FGT, Pct., FT-FTA, Pct., Miss, Reb-Avg, Pf-D, Pts., Avg., High, Game.

Chess Players Open Tourney

Texas A&M chess players conducted in Room 3B of the MSC, announced chess committee chairman Norman Gabitzsch of Brownsville. Students and faculty will compete in the day-long tourney to be

Sports Aplenty The Zany SWC By GARY SHERER

The sports writers who cover the Southwest Conference basketball games did some pre-season rating late last year. Now sports writers qualify as ne'er-do-well clairvoyants more often than not. In this classic bit of prognosticating, they didn't ruin their record.

Texas Tech was picked to finish first in the SWC followed by the Aggies, Texas Christian, Southern Methodist, Texas, Arkansas, Rice and Baylor.

When a person predicts something, he is either proved wrong or right. Therefore, with a very slim margin for error, they can't be chastized that much. But, when a team that only receives 19 votes on a 8 for first, 7 for second, etc. basis, is presently leading the conference — shades of the unsinkable Titanic.

The Baylor Bears, are currently 6-1 in SWC play and leading the league. What did the writers base their forecasts on? One possibility is that the Bears haven't won a conference crown since 1950. And there is also the 44-year gap in football championships. . . . But, lets not cop a plea, what's wrong is wrong.

However, being wrong about the zany SWC is not hard to accomplish. It should be noted that the Texas Aggies were supposed to be dead after four straight football losses this season.

TCU is a good example of how the fortunes of a basketball team in the SWC can change as often as Barry Goldwater's statements.

The Horned Frogs started off the season by beating Rice and then the Aggies. Texas then knocked off TCU at Austin. After the loss to TCU, Rice beat Arkansas and Texas Tech. Last week, TCU lost to those same two teams. Texas, however, kept some semblance of "normalcy" (to quote Warren G. Harding) by beating Rice also.

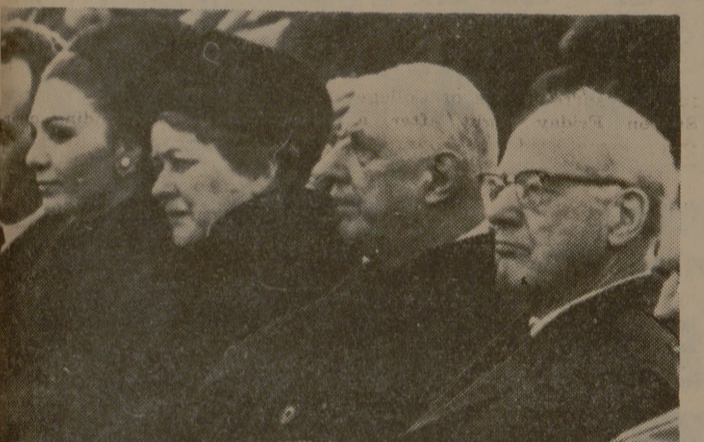
The Aggies now enter the picture. They lost to TCU, but beat Texas. Tuesday night, the Aggies beat Rice who had topped Arkansas who had beaten the Aggies and on and on and . . .

Arkansas, who also was lightly regarded by the pre-season poll, is now in second place with a 5-2 mark. They have accomplished these five conference wins though currently they are five points behind their competitors in total points.

In fact, only the Aggies, TCU and Baylor have scored more points than their opponents.

Now, back to league-leading Baylor. It should be noted that every one of their victories, with the exception of the win over the Aggies have come in the Heart-of-Texas Coliseum on the homeground of Waco. Therefore, maybe the harried scribes will still be right after Baylor hits the road in the next couple of weeks.

What is the answer to this zany situation? Well, the pro football people say that on a given Sunday, any team can be as good as another. However, in the SWC it must go — on a given night, any team can be as bad as another.



DE GAULLE AT OPENING OF WINTER OLYMPICS French President Charles deGaulle, second from right, attends opening of 10th Winter Olympic Games in Grenoble, France. From left: Mayor Hubert Dubedout of Grenoble, Empress Farah of Iran; Mme. deGaulle; President deGaulle; and Avery Brundage, president of International Olympic Committee. (AP Wirephoto by cable from Grenoble)

MSC Bowling Special Win Free Games Every Day In FEB. From 2 P. M. Till Closing With A Strike On A Red Head Pin. OPEN BOWLING Mon. - Sat. 2 p. m. - 10 p. m. Sun. 1 p. m. - 10 p. m. No League Play During These Times

"Want a company where you can really put your education to work? See IBM Feb. 15th or 16th!"

"Some of the engineers who graduated before me complained that their education didn't mean much in their jobs. That's not what I wanted," says IBM's Jim Carr. (Jim is a Manager of Mechanical Process Engineering.)

"At IBM I knew I'd be using what I learned. There's so much diversity here that you can usually work in the specific area you choose. In my own case, I majored in Mechanical Engineering and minored in Metallurgy. Today my ME degree means more than ever. And I often use my metallurgical background. For example, I'm now working on a process development program that requires a knowledge of machine design, metallurgy, heat transfer, and chemistry, all of which I studied in school.

"Another good thing about IBM's diversity is that it creates an interdisciplinary environment. You get a chance to work with and learn from people in many different fields. Since our industry is growing so fast, the people you talk to are likely to be working at state-of-the-art levels or beyond."

There's a lot more to the IBM story than Jim has mentioned. We'd like to tell you about it when we're on campus. We'll be interviewing for careers in Marketing, Computer Applications, Programming, Research and Development, Manufacturing, and Field Engineering.

Sign up for an interview at your placement office, even if you're headed for graduate school or military service. And if you can't make a campus interview, send an outline of your interests and educational background to Mr. C. F. Cammack, IBM Corporate Recruiting, 1447 Peachtree St. N.E., Rm. 810, Atlanta, Georgia 30309. We're an equal opportunity employer.



IBM