

Aerospace Student Builds New Type Aircraft

DEXTER HAND SEWN MOGS at
Jva Starnes mens wear

Be a **TWA** Flight Hostess
TWA NEEDS 500 STUDENT HOSTESSES IMMEDIATELY!

You can start your TWA special training, with pay, within 30 days! Decide now to step up to this rewarding career! Now is the time to visit your local TWA Flight Hostess representative!

You may enjoy:

- Complete schooling—with pay. Salary \$230 monthly.
- Salary after 6 weeks training approximately \$415 monthly.
- Flights within U.S.A. or to Europe.
- Training in major European languages—free.
- Travel pass privileges for parents after one year.
- A wide range of fringe benefits.

PRIMARY QUALIFICATIONS:
Minimum age 19½. Excellent health. Unblemished complexion. Height 5'2" - 5'9" with proportionate weight by TWA standard. Glasses permitted. Single.

See your TWA Representative:
Mr. C. Rickman
Hotel America - Houston
Thursday, Friday & Saturday
January 22th, 26th & 27th
9:00 - 1:00 p.m.

(No phone calls, please)
An Equal Opportunity Employer

Students in a Texas A&M University aerospace engineering "idea course" have studied the possibilities of a new type aircraft.

The tandem-wing, jet-powered plane designed for cargo handling stability was performance-checked by a student with the likely-sounding aerospace engineer's name of Jett.

M. B. (Dud) Jett, senior aero engineering major from Seagoville, has a 2.96 grade point ratio and several other interests he applied to preparations for his aerospace future.

THE SON of Mr. and Mrs. Barney B. Jett, Route 1, Seagoville, has flown model planes 13 years. Dub built and flew national champions three times.

He constructed a model of the two-wing craft for testing in the Aerospace Engineering Department's 3-by-5 foot wind tunnel.

"It is the most beautiful model I've ever seen," commented Prof. Charles Rodenberger, instructor of the special problems course in which students worked on various projects with new idea appeal.

THE 13-INCH wing span model

required 100 hours work during the Christmas holidays and received 35 coats of lacquer. It has a forward-swept rear wing and no stabilizer as such.

Jett, who graduated second in his class at Spruce High and considers Dallas his home, spent about 400 hours on performance analysis of the plane that appears to be flying two directions at the same time.

"The two-wing configuration could possibly allow large center of gravity shifts due to improper loading and still have stable flying characteristics," the 20-year-old stated.

JETT SAID several stability problems need to be ironed out but from the standpoint of light transport and short-haul passenger service, the aircraft has possibilities.

"This is especially true with the addition of two extra engines providing sufficient thrust for vertical take off and landing," he added. "The plane could pull up to a dock as if it were a truck, load quickly without strict adherence to load trim and fly away."

He said stability problems "cannot be settled with anything short of a full scale wind tunnel test."

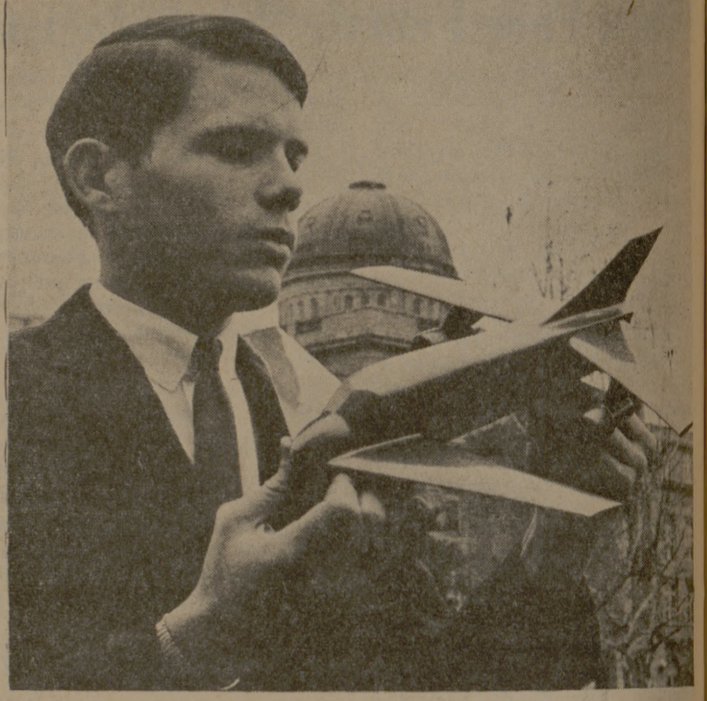
JETT COLLECTED project material while working for Ling-

Temco-Vaught last summer. He analyzed performance in terms of altitude, power settings, weight, range, fuel consumption and airspeed by computer. He wrote the program and obtained performance data from A&M and LTV computers.

Jett attended Arlington State a year before entering A&M in 1965. He is a student member of

Tau Beta Pi, Sigma Gamma Tau, Phi Kappa Phi, the Texas Society of Professional Engineers and American Institute of Aeronautics and Astronautics. He was student body president at Spruce High.

He plans graduate aerospace engineering studies and more undergraduate work for a business degree.



JETT AND JET
The odd-shaped jet airplane exhibited by M. B. (Dud) Jett of Seagoville, senior aerospace engineering major at Texas A&M, may have potential in the air freight business. The tandem-wing arrangement promises flight stability with a movable center of gravity. Jett designed the wind tunnel model and analyzed the plane's performance.

EL ZARAPE RESTAURANT
Specializing In Mexican Food

Hours open Tues. thru Sat. 4 - 9 p. m. and Sun. 11 - 9 p. m.
Mr. & Mrs. Bee

Three Tostodas Conqueso With Meals

311 McArthur Street
College Station, Texas

"YOU BE THE JUDGE!"
ONLY KROGER CAN OFFER YOU
Everyday Low Prices plus

and you always get valuable **TOP VALUE STAMPS!**

Texas & Villa Maria
8 A.M. - 8 P.M.
Mon. thru Sat.

Gerber Strained
Tenderay Brand Beef
Sunrise Fresh Produce
All New "Deck O Money" Win up to \$1,000.00

ROADSHOW ENGAGEMENT

A man too big for legend—A motion picture too big for any screen except **CINERAMA**

ROBERT SHAW
CUSTER OF THE WEST

starring **MARY URE**
co-starring JEFFREY HUNTER, TY HARDIN, KIERON MOORE, LAWRENCE TIERNEY and **ROBERT RYAN**

Photographed in SUPER TECHINIRAMA TECHNICOLOR.
Written by BERNARD GORDON and JULIAN HALVEY. Directed by ROBERT SODOMAK.
Music Composed and Conducted by BERNARD STEIGALL. A Seagram Pictures, Inc. Film.

CHOICE RESERVED SEATS AVAILABLE BY MAIL! AT THE BOX OFFICE!

MATINEES: Sunday, 2:00 - 5:00 p.m. \$2.50
Saturday, 2:00 p.m. \$2.50

EVENINGS: Nightly, 8:00 p.m. \$2.50

For Groups and Theatre Party Information Call
MRS. DARLYNE MYRICK
PR 1-1261

Gaylynn Theatre in Sharpstown
SOUTHWEST FRWY AT BELLAIRE / PR 1-1261

Enclose Self-Addressed Stamped Envelope

Kroger

Sugar 5 Lb. Bag **44¢**

Baby Food Jar **7¢**

Coffee 1-Lb. Can **61¢**

Crisco 3 Lb. Can **82¢**

Wesson Oil 24-Oz. Btl. **47¢**

Jell-O 4 3½-Oz. Pkgs. **39¢**

Catsup 5 14-Oz. Btls. **\$1**

Right Guard 4-Oz. \$1.00 Size **69¢**

Maalox 12-Oz. \$1.49 Size **94¢**

OJ's Lotion 6-Oz. \$1.00 Size **65¢**

Clorox ½-Gal. Btl. **35¢**

Evaporated Milk 2 Tall Cans **29¢**

Tomato Sauce 8-Oz. Can **10¢**

Flour 5-Lb. Bag **39¢**

All Purpose Flour 5-Lb. Bag **59¢**

Salad Dressing 4-oz. Jar **49¢**

Velveeta 2-Lb. Loaf **93¢**

Heinz Strained Baby Food Jar **7¢**

Sego 10-Oz. Cans **79¢**

Tide 75¢

Northern Paper Towels 4 Big Rolls **\$1.00**

Shortening 3 Lb. Can **82¢**

Wax Paper 100-Ft. Roll **21¢**

Geisha Sliced 4 No. 2 Cans **\$1.00**

Fruit Cocktail 4 303 Cans **\$1.00**

Peaches #2½ Can **29¢**

Assorted Flavors 4 3½-Oz. Pkgs. **39¢**

Beef Stew 24-Oz. Can **39¢**

Spam 12-Oz. Can **51¢**

Prem 12-Oz. Can **49¢**

Tea Bags 48-Ct. Pkg. **59¢**

Hunt's Regular Flavor 5 14-Oz. Btls. **\$1**

Spray Deodorant 4-Oz. \$1.00 Size **69¢**

Pork and Beans 2 300 Cans **29¢**

Similac 13-Oz. 29¢ Size **24¢**

Alka Seltzer 25-Ct. 69¢ Size **49¢**

Geritol 12-Oz. \$2.98 Size **\$1.98**

Tomato Soup 10½-Oz. Can **12¢**

Chicken Noodle Soup 10½-Oz. Can **17¢**

Cake Mix 3 19-Oz. Pkgs. **\$1.00**

Cake Mixes 19-Oz. Pkg. **35¢**

Northern Bathroom Tissue 4 Big Rolls **37¢**

Pineapple Juice 46-Oz. Can **33¢**

Aspirin 100-Ct. 98¢ Size **67¢**

Anacin 100-Ct. \$1.33 Size **99¢**

Dristan 24-Ct. \$1.19 Size **89¢**

Decongestant Capsules 10-Ct. \$1.49 Size **93¢**

Ponds Cold Cream Medium 89¢ Jar **67¢**

Hair Spray 7-Oz. \$1.50 Size **\$1.09**

Adorn Lanolin Plus 13-Oz. \$1.00 Size **63¢**

Hair Spray 10.5-Oz. \$1.00 Size **59¢**

Pacquin 13-Oz. \$1.00 Size **59¢**

Suave 13-Oz. \$1.00 Size **59¢**

Fruit Drinks 46-Oz. Cans **\$1.00**

Hi C Drinks 46-Oz. Cans **29¢**

Orange Drink 4 Quart Btls. **\$1.00**

Morton Salt 2 26-Oz. Bases **21¢**

Kroger Gelatin All Flavors! 4 3-Oz. Pkgs. **35¢**

Crisco Oil 24-Oz. Btl. **49¢**

Instant Coffee 6-Oz. Jar **87¢**

Maxwell House 10-Oz. Jar **\$1.19**

Instant Coffee Folgers Fine Quality 1-Lb. Can **69¢**

Folgers Coffee Premium Crisp 1-Lb. Box **33¢**

Saltines 1-Lb. Box **33¢**

Kleenex Jumbo Roll **29¢**

Starkist Tuna Chunk 6½-Oz. 93¢ Can **93¢**

Chunk Tuna Kroger 4 6½-Oz. Cans **\$1.00**

Peel'd Tomatoes Hugo Whole 6 300 Cans **\$1.00**

Prune Juice Sunsweet 4 300 Cans **\$1.00**

Liquid 12-Oz. \$1.49 Size **94¢**

Shampoo 2.4-Oz. \$1.00 Jar **73¢**

Head & Shoulders Hair Tonic 3-Oz. 83¢ Tube **68¢**

Vitalis Concentrate Super Stainless Double Edge 5-Ct. 79¢ Size **59¢**

Gillette Blades Skin Cream 10 oz. **99¢**

Noxzema 10 oz. **99¢**

Skin Bracer 4-Oz. 79¢ Size **64¢**

HARLEM GLOBETROTTERS
"MAGICIANS OF BASKETBALL"

PLUS A GREAT ADDED VARIETY PROGRAM

A TOWN HALL EXTRA
On
TUESDAY, FEB. 6, 1968
G. ROLLIE WHITE COLISEUM
8:00 P. M.

TICKET PRICES:
A&M Student & Date \$1.50
Public School General Admission \$2.00
Reserved Seats \$2.50, \$3.00

Tickets On Sale At
University National Bank
Bank of A&M
City National Bank
First National Bank
First Bank & Trust
Bryan Building & Loan
Gibsons
Tip Top Record Shop
MSC Student Program Office