

KK's Warn Students Again

Texas A&M students should not

do business with any "campus" salesmen who do not have the necessary university permits, Campus Security Chief Ed Powell warns.

Powell used a graphic example to illustrate his warning.

"Two magazine salesmen recently went into a freshman's room here," he related. "They had no permits to be selling anything on campus. Unable to sell the boy any magazines, they tried a story about winning points for scholarships to college."

"They talked this student into writing checks totaling \$221," Powell continued, "explaining that they would turn in the sales to win their scholarships, then tear up the checks without cashing them."

The checks were cashed before the youth's father could stop payment.

"It's a prime example of a swindle," Powell pointed out. "And anytime you give a stranger a check, you run the risk of having the check 'raised' or altered."

Parrots, sparrows and titmice show a reasonable amount of brainpower. Crows and ravens can be regarded as the geniuses of the bird world.

Need a copy of your notes, graphs, papers, etc? For your use at **LOUPOT'S**

BIG NEW SOUND Norelco



Continental '75' Compact Cassette Portable Tape Recorder

Cordless! Goes anywhere. Big 4" speaker brings in full range sound quality! Just snap in a tape cassette and play/record up to 1 1/2 hrs! Separate volume, tone, record level controls. 80-10,000 Hz. Comes with dynamic microphone, cassette, patch cord.

WHITE'S AUTO
Bryan and College Station
822-3867 — 846-5626

N. Viets Step Up Invasion With New Artillery Barrage

By EDWIN Q. WHITE
SAIGON (AP) — North Vietnamese heavy artillery hit the U. S. Marines' Khe Sanh base for the first time late Wednesday. Explosion of the big shells all but muffled an accompanying rain of lighter projectiles—mortar rounds and rockets.

A 30-minute barrage from Communist batteries signaled a stepup in the military confrontation in the Khe Sanh hill country, a defensive American array against invasion from the North that has brought the threat of the war's biggest battles to the critical sector below the demilitarized zone.

THERE WAS no immediate word of casualties or results of counterfire from American batteries at the base, headquarters of the reinforced 26th Marine Regiment on a red clay bluff three miles north of the town of Khe Sanh.

Marine spokesmen said 150 shells spewed from the long-range Red guns, perhaps moved by hand into the Annamite Mountains just as the Communists positioned mountain howitzers for the siege that forced surrender of the French at Dien Bien Phu in 1954.

SOME WERE of 152 mm—about six inches in diameter. Russian-built guns of this size had been used previously by North Vietnamese artillerymen against Con Thien and Gio Linh, Marine outposts farther east in flatlands between the mountains and the South China Sea.

They can lob a shell more than 16 miles. A Marine spokesman said the shooting came from the northeast, either within South Vietnam or in the southern edge of the DMZ, 13 miles away. From closer at hand, enemy mortar and rocket squads that have been in action since last Saturday poured in about 250 rounds.

ASSOCIATED PRESS correspondent Peter Arnett reported from the Marine headquarters at Da Nang that Marine observation posts on the Hill 881 and Hill 861, two of three strategic peaks the Leathernecks wrested from Hanoi

regulars in a bloody campaign last spring, again came under sporadic mortar attacks. Four thousand North Vietnamese were estimated to be operating in the northwest corner of South Vietnam, with more on the way.

Allied policy forbids ground troops from crossing the DMZ to seek out on their home grounds the North Vietnamese army elements concentrated within the southern panhandle. The Marines and their South Vietnamese allies have to dig in to hold against Communist thrusts such as the month-long artillery siege of Con Thien last September.

HARASSMENT of the potential reinforcements for an all-out enemy push within South Vietnam's two upper provinces, which captured documents have shown Hanoi covets, is limited largely to air strikes. Landbased artillery and naval guns work over some of the closer staging areas.

Gen. William C. Westmoreland said a week ago he anticipated "a resurgence of enemy initiatives just before or just after Tet," the Vietnamese lunar new year Jan. 30, and that the next major campaign would develop in the 1st Corps area just below the DMZ.

"MOST OF the Communist initiatives have political motives," the commander of U. S. forces in Vietnam said in an interview. "Tet is an emotional time when families and friends gather. Any display of strength would benefit the enemy both psychologically and politically."

Enemy mortar, rocket and infantry attacks that flared in the Khe Sanh sector last Saturday bore out his forecast.

A Marine officer said the enemy's concentration in that sector may be only one of several threats, adding: "We expect all-out attacks."

A SENIOR U. S. officer in Saigon said North Vietnam has put a new division of about 10,000 troops into South Vietnam along DMZ.

He identified it as the 304th and said intelligence indicated it

was one of the major units assigned to an offensive aimed at knocking out U. S. forces in the north.

A captured North Vietnamese lieutenant was quoted as having told his interrogators that a North Vietnamese build-up in the area of the DMZ was aimed at "destroying American forces."

"A victory would be followed by negotiations," he said.

THE PRESENCE of the new division means the North Vietnamese have three full divisions and perhaps a fourth in or within striking distance of South Vietnam's northern frontier. Officers said this force would number from 32,000 to 40,000 regular troops, with additional support elements and guerrilla forces.

Confronting them now in the two northern provinces—Quang Tri and Thua Thien—are about 50,000 U. S. troops and 12,000 South Vietnamese soldiers. Of these, somewhat more than 5,000 Marines are in the Khe Sanh area.

THE DEFECTING lieutenant was quoted as saying the Communist battle plan is considered so crucial it is under the direction of the Hanoi Defense Ministry, headed by Gen. Vo Nguyen Giap. Giap was the mastermind of the Communist victory at Dien Bien Phu.

With Marine forces stretched thin all along the DMZ, the U. S. command recently moved a Marine regiment and an Air Cavalry brigade up from areas south to Da Nang. These moves involved about 10,000 men and took regular Army troops that far north for the first time in the war.

"WITH FORCES this size in such a small area," said one high U. S. officer, "you're getting something a lot closer to conventional warfare than guerrilla warfare."

Because the northern area affords the enemy the shortest lines of supply and so far the sanctuary of the 17th parallel border, it has long been developing as one of the bloodiest areas of the continued fighting.

A&M Vet School Receives Grant

COLLEGE STATION—Dr. and Mrs. R. Henry Harrison Jr. of Bryan have presented Texas A&M University an endowment valued at approximately \$11,500 for scholarships in veterinary medicine.

University officials said the gift is one of the largest ever received from a local individual or family.

Formal presentation by the couple of 200 shares of stock in a utility company was made during brief ceremonies Friday afternoon in the office of A&M President Earl Rudder.

Dr. Harrison, a native of Bryan and a member of A&M's Class of '20, has practiced medicine here many years. He was one of A&M's first four veterinary medicine graduates and subsequently

received his M. D. from the Baylor College of Medicine.

A primary purpose of the permanent endowment fund will be to serve as a memorial to Dr. Mark Francis, veterinary medicine dean at A&M from 1916 until his death in 1936.

Terms of the endowment stipulate the scholarships will be awarded to students enrolled in the professional curriculum of veterinary medicine, with preference given to students who participate in major varsity sports.

Dr. Harrison, active in football and track while at A&M, was a member of the 1919 Southwest Conference championship football team which was undefeated and held its opponents scoreless.

Congressman Olin E. Teague Announces For Re-Election

Congressman Olin E. Teague has announced for re-election in the Sixth Congressional District. Congressman Teague was elected to represent the Sixth Congressional District in the 79th Congress, and has served continuously since August 2, 1946.

The last session of the Texas Legislature changed the Sixth Congressional District by adding Washington, Austin, Waller, and Fort Bend Counties on the southern end of the District. The new Sixth District created by the last session of the Legislature is as follows: Johnson, Hill, Ellis, Navarro, Freestone, Leon, Brazos, Grimes, Madison, Washington, Austin, Waller, Fort Bend and the southern portion of Dallas and Tarrant Counties.

Congressman Teague said that he felt that the new counties added on the south have a strong community of interest with Leon, Brazos, Grimes and Madison Counties.

Congressman Teague is the second ranking Democrat on the Committee on Science and Astronautics, and he is Chairman of its Subcommittee on Manned Flight. These programs are of direct interest to thousands of people residing in the Sixth District. Texas A&M University has a rapidly expanding space science program in conjunction with the Manned Space Flight Center at Houston. In the northern area of the District, approximately 30,000 persons from the southern portions of Dallas and Tarrant Counties, Ellis, Johnson, Hill, and Navarro Counties, are employed in the aero-space industry in the Dallas-Fort Worth area. The Manned Space Flight Center at Houston and the companies that serve it provide job opportunities to those residents of Fort Bend, Waller, Washington and Austin Counties who are in commuting distance and have an important impact on the economy of the area.

Congressman Teague has said that because of his seniority on the Science and Astronautics Committee, he is in a position to look after the areas interest in connection with the rapidly expanding space program.

Congressman Teague has been Chairman of the Committee on Veterans' Affairs for the past thirteen years, since the beginning of the 84th Congress. During that time, he has authored more laws of benefit to veterans and their dependents than any other Member of Congress.

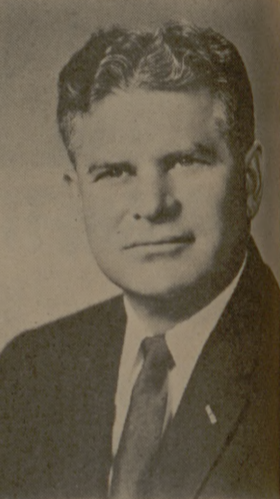
He is the author of the Korea "G. I. Bill," which provided education and training for millions of veterans.

He wrote the War Orphans' Educational Assistance Act, which has provided scholarship assistance to several hundred thousand orphans and children of totally disabled veterans.

He was the principal sponsor of the Veterans Administration direct home loan program, which extended V. A. housing benefits to veterans living in small towns and rural areas.

Recently Congressman Teague successfully sponsored legislation creating the Veterans Administration nursing care program. This is a program designed to assist elderly veterans, such as World War I veterans, in need of nursing care.

Congressman Teague has authored several laws increasing



Cong. Olin E. Teague

compensation and pension for disabled veterans. He served as the Survivor Benefits Committee member for service-connected widows and orphans.

Congressman Teague has been an enthusiastic backer of soil and water conservation programs. During the twenty-one years he has served in Congress, the reservoir at Whitney was completed and projects have been undertaken or completed at Navasota, Millers and Bardwell. Major conservation watershed projects are in progress in the Sixth District on Chambers Creek, Tule, Cana Creek, Richland Creek, Mountain Creek. Several of the projects are designed to furnish municipal water supply.

In an effort to strengthen the beef and dairy industries, Congressman Teague participated in the successful fight to limit beef imports. He is sponsoring legislation to limit beef imports when he says are depressing prices.

Congressman Teague has developed an experienced office staff that is effective in handling individual problems of servicemen, veterans, Social Security recipients, and individuals having problems with Federal programs.

Congressman Teague has assisted dozens of unincorporated communities throughout the Sixth District in obtaining Federal Home Administration loans for the creation of rural water systems, and is now assisting in the implementation of the new waste disposal program of the Federal Home Administration.

Congressman Teague attended Texas A. & M. College. He married the former Miss Freda Dunman of Fort Worth, Texas. They have three children. James M. Teague is employed by the AID Agency and spent the last 18 months in Vietnam where he was wounded twice. Captain John O. Teague, of the United States Air Force, served one tour in Vietnam and will be returning soon as a fighter pilot. Miss Teague is attending the University of Texas where she is a senior.

In making his announcement for re-election, Congressman Teague said: "I feel that twenty-one years of experience and seniority have placed me in a position to render effective service in Congress, and I will consider it a great privilege if voters of the Sixth District prefer to return me to office for another term."

The Church.. For a Fuller Life.. For You..



Hillier Funeral Home

BRYAN, TEXAS
502 West 26th St.
PHONE TA 2-1572

CALENDAR OF CHURCH SERVICES

- ST. MARY'S CATHOLIC**
Sunday Masses—7:30, 9:00 and 11:00
- OUR SAVIOUR'S LUTHERAN**
8:15 & 10:45 A.M.—The Church at Worship
9:30 A.M.—Bible Classes For All Holy Communion—1st Sun. Ea. Month
- CHRISTIAN SCIENCE SOCIETY**
9:30 A.M.—Sunday School
11:00 A.M.—Sunday Service
11:00 A.M.—2 P.M.—Tues. Reading Rm.
7:00-8:00 P.M.—Wed., Reading Room
8:00 P.M.—Wed. Evening Worship
- A&M CHURCH OF CHRIST**
8:00 & 10:00 A.M. Worship
9:00 A.M.—Bible Study
5:15 P.M.—Young People's Class
6:00 P.M.—Worship
7:15 P.M.—Aggie Class
9:30 A.M.—Tues. - Ladies Bible Class
7:15 P.M.—Wednesday - Bible Study
- UNIVERSITY LUTHERAN**
(Missouri Synod)
10:00 A.M.—Bible Class
11:00 A.M.—Morning Worship
7:30 P.M.—Wednesday Vesper
- CHURCH OF THE NAZARENE**
9:45 A.M.—Sunday School
10:45 A.M.—Morning Worship
6:30 P.M.—Young People's Service
7:00 P.M.—Preaching Service
- FIRST BAPTIST**
9:30 A.M.—Sunday School
10:45 A.M. Morning Worship
6:10 P.M.—Training Union
7:20 P.M.—Evening Worship
6:30 P.M.—Choir Practice & Teachers' meetings (Wednesday)
7:30 P.M.—Midweek Services (Wed.)
- FIRST CHRISTIAN CHURCH**
Homestead & Ennis
9:45 A.M.—Sunday School
10:50 A.M.—Morning Worship
6:30 P.M.—Young People
- GRACE BAPTIST CHURCH**
2505 S. College Ave., Bryan
An Independent Bible Church
9:15 A.M.—Sunday School
11:00 A.M.—Morning Worship
7:30 P.M.—Evening Worship
- ST. THOMAS EPISCOPAL**
906 Jersey Street, So. Side of Campus
Rector: William R. Oxley
Asst.—Rev. Wesley Seeliger
8:00 A.M. & 9:15 A.M. Sunday Services
- SECOND BAPTIST**
710 Eisenhower
9:45 A.M.—Sunday School
11:00 A.M.—Church Service
6:30 P.M.—Training Union
7:30 P.M.—Church Service
- A&M PRESBYTERIAN**
7-9 A.M.—Sun. Breakfast - Stu. Ctr.
9:45 A.M.—Church School
11:00 A.M.—Morning Worship
6:00 P.M.—Sun. Single Stu. Fellowship
7:15 P.M.—Wed. Student Fellowship
6:45 A.M.—Fri. Communion Service
Wesley Foundation
- FAITH CHURCH**
UNITED CHURCH OF CHRIST
9:15 A.M.—Sunday School
10:30 A.M.—Morning Worship
7:30 P.M.—Evening Service
- COLLEGE HEIGHTS ASSEMBLY OF GOD**
9:45 A.M.—Sunday School
11:00 A.M.—Morning Worship
6:30 P.M.—Young People's Service
7:30 P.M.—Evening Service
- A&M METHODIST**
8:50 A.M.—Morning Worship
9:45 A.M.—Sunday School
10:55 A.M.—Morning Worship
5:30 P.M.—Campus & Career Class
5:30 & 6:00 P.M.—MYF Meetings
- UNITARIAN FELLOWSHIP**
305 Old Highway 6, South
10:00 A.M.—Church School
8:00 P.M.—Adult Service
- CHURCH OF JESUS CHRIST OF LATTER DAY SAINTS**
26th East and Coulter, Bryan
8:30 A.M.—Priesthood meeting
10:00 A.M.—Sunday School
5:00 P.M.—Sacrament Meeting
- CENTRAL CHRISTIAN CHURCH**
3205 Lakeview
9:45 A.M.—Bible School
10:45 A.M.—Morning Worship
6:00 P.M.—Youth Hour
7:00 P.M.—Evening Worship

College Station's Own Banking Service

University National Bank


NORTH GATE

Central Texas Hardware Co.

BRYAN

- HARDWARE
- CHINAWARE
- CRYSTAL
- GIFTS

Sure Sign of Flavor



SANITARY Farm Dairies

Two Students Charged Here With Car Theft

Two Texas A & M University students have been charged with automobile theft in a Brazos County Justice Court.

Charged on examining docket of 85th District Court in the office of Jess McGee, Pct. 4, Place 2, are Franklin Koppersmith, sophomore zoology major from Mobile, Ala., and Erwin G. Kirkvold, freshman chemical engineering major from Sioux Falls, S. D.

Both youths were released Tuesday from Brazos County Jail after posting bond. They were arrested Saturday night by Bryan Police who said they were driving a car reported stolen from another A&M student.

Minister To Give Black Power Talk

Larry C. Boyd, minister of the Unitarian Church of Corpus Christi, will speak to the Unitarian Fellowship at 305 Old Highway 6, South in College Station Sunday at 8 p.m.

The title of his sermon will be "How Black Is White." This sermon will explore the new role thrust upon the white liberal by the emerging of the Black Power Movement.

Recently Boyd was the Southwest Conference delegate to the Black Power Conference held in New York City.

BROKE EVEN

WILLARD, Mo. (AP) — The Willard High School newspaper, Tiger Tales, reports the following:

"Student Council sponsored a car smash. Students smashed a '53 auto donated by a salvage firm and broke three hammers in demolishing the car.

"The Student Council made \$20 which it will use to replace the broken hammers."

The Exchange Store

"Serving Texas Aggies"

Bryan Building & Loan Association

BRYAN

Lilly

ICE CREAM AND MILK

AIRLINE Reservations and Tickets At No Extra Cost . . . Free Ticket Delivery . . . 30 Day Charge Account . . . Bonded ASTA Agent

Call Beverley Braley . . . Tours . . . Travel

MEMBER AMERICAN SOCIETY OF TRAVEL AGENTS **ASTA**

BRYAN — **823-8188** MEMORIAL STUDENT CENTER, A&M — **846-7744**

