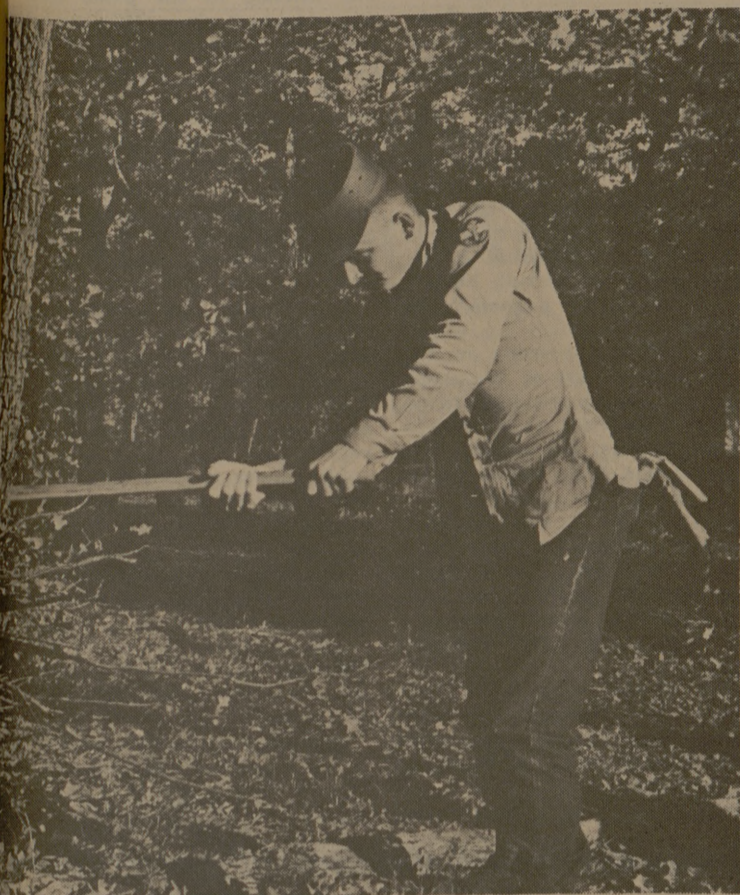


Cutting Area Buzzes With Saws And Activity



"Woodman, Woodman, spare that tree," went unheeded this weekend as thousands of Aggies filled the woods north of Bryan to begin mowing down the trees that will make up the bulk of the Bonfire this year.

Chain saw crews and juniors and seniors with axes began cutting the trees several days earlier in order to assure that the freshmen and sophomores would have plenty of logs to tote out of the forest. Mud left over from countless rains the weeks before made every obstacle a challenge. Drainage ditches and small creeks became major rivers of mud and mire.

Brute force made up the bulk of the transporting the logs, but some tractors were brought into play to speed up the hauling.

Cuts and bruises, as well as logs, began piling up soon after work started.

Even though the sun did come out part of the time to dry up a few of the mudholes, there were always some Aggies able to find just one more wet and muddy spot to cross.



ONE MORE MILE TO GO
Fish muscle provides the best method to get the big logs out to the trucks and on their way to the bonfire site.



STICK-IN-THE-MUDS
Marooned Aggies wait for dry weather so they can escape muddy clutches of the cutting area.

CIVILIAN SENIORS and GRADUATES STUDENTS

Will have their portrait made for the 1968 Aggie-land Nov. 13 thru Jan. 15.

Portraits will be made at University Studio.

(Coats & Ties)

LET US ARRANGE YOUR TRAVEL . . .

ANYWHERE IN THE U. S. A.
ANYWHERE IN THE WORLD

Reservations and Tickets For All Airlines and Steamships — Hotel and Rent Car Reservations
Tickets Delivered



—Call 822-3737—

Robert Halsell Travel Service
1016 South College Avenue Bryan

Do You Want To Be Just a Number or an ENGINEER?

UOP offers unlimited opportunities for CHEMICAL ENGINEER

At UOP you will be an engineer, and not a mere payroll number, as UOP has always been recognized as an organization employing only outstanding Chemical Engineers who use their education and background in the areas of Research, Development, Engineering, Design, Marketing, and Technical Services for the Petroleum and Petro-Chemical Industries. UOP is an international organization, which means you will also be given the opportunity to enjoy foreign travel.

YOU OWE IT TO YOURSELF to find out more about the challenging opportunities that await you at UOP.

Visit with the UOP representative at your Placement Office on November 16, 1967.

DON'T WAIT . . . SIGN UP NOW!

OUTFIT PICTURES AGGIELAND '68

Uniform will be Class A winter. Oufit C.O.'s will wear sa-ber; seniors will wear boots and midnight shirts. Guidons and award flags will be carried. All personnel in the outfit will wear the billed service cap issued by the university. The type of cap worn by underclassmen to and from the picture taking area is left up to the discretion of the outfit C.O.

Outfits should be in front of the Administration Building by 7:30 a. m. on the appointed day.

- Nov. 13 — Sqdn. 2 & 3
- 14 — Sqdn. 4 & 5
- 15 — Sqdn. 6 & 7
- 16 — Sqdn. 8 & 9
- 17 — Sqdn. 10 & 11
- Dec. 4 — Sqdn. 12 & 13

NOTE:
Athletic outfits H-1 and Sqdn. 14 will be scheduled for the first week of December by C.O. with University Studio.

CORPS SENIORS CLASS PICTURES 1968 AGGIELAND

Nov. 13 — Nov. 17—S - Z

Uniform: Class A Winter (Blouse).
Attention: ALL COMMANDING OFFICERS

Commanding Officers of all Staffs and Outfits will have full length portraits made in boots for the Military Section. Uniform: Midnight shirts. (Note: class pictures must be in blouse.) PLEASE MAKE INDIVIDUAL APPOINTMENTS WITH UNIVERSITY STUDIO FOR THESE FULL LENGTH PORTRAITS.

Attention: All other staff members (including Juniors), Outfit Executive Officers and First Sergeants will have portraits made for the Military Section in G. H. caps and Class A Winter (blouse) according to the above schedule.

All pictures made at the University Studio — North Gate.



KEEPING IT SHARP

After mowing down all those trees, fence posts, telephone poles, and fellow Aggies, a man's axe begins to get dull and it's time to stop for a moment and sharpen it up for the next assault.

The Hunter's Prayer

Let Me Shoot Clean,
Kill Clean,
And If I Can't Kill Clean,
Please Lord
Let Me Miss Clean.

COMPLETE DEER PROCESSING

Curing and Smoking—
Sausage, Ham, Salami

We smoke all types of game
Turkeys, Pheasants, Game Ducks

GUARANTEED SERVICE

HANSON'S

2701 Texas Ave.

822-3116

The facts of life.

Olds 4-4-2. Three bucket-seat models: Holiday Coupe, Sports Coupe, Convertible.

ENGINE	DRIVE TRAIN	OTHER OPTIONS
Type Rocket V-8 Bore x stroke, inches 3.87 x 4.25 Displacement, cubic inches 400 Compression ratio 10.5-to-1 Bhp 350* at 4800 rpm Torque, lb.-ft. 440 at 3200 rpm Carburetion 4-bbl. Built-in Combustion Control System provides constant carb air temperature. Optional: Force-Air Induction System. Requires close-ratio 4-on-the-floor transmission or Turbo Hydra-Matic. 4.33-to-1 axle, 360 bhp at 5400 rpm. Optional: Cruising package: Includes 400-CID V-8 with 2-bbl. carb, 290 bhp, 9-to-1 compression, Turbo Hydra-Matic, 2.56-to-1 axle, 325-hp Rocket 400 V-8 with 4-bbl. carb and 10.5-to-1 compression ratio teams with Turbo Hydra-Matic. *Bhp 325 with Turbo Hydra-Matic.	Transmission Fully synchronized, heavy-duty 3-on-the-floor with Hurst Shifter Optional: 4-on-the-floor (close- or wide-ratio with Hurst Shifter) or Turbo Hydra-Matic floor shift. Prop shaft Heavy-duty Axle ratios (to 1) 2.56, 2.78, 3.08, 3.23, 3.42, 3.91, 4.33, 4.66 Optional: Heavy-duty axles (H.D. shafts, bearings, differential gears), 3 ratios.	Power front disc brakes. UHV Transistorized Ignition. Anti-Spin Differential. Rally Stripe. Rally Pac (clock, tach, engine gauges). Sports console. Custom Sport Steering Wheel. Radial-Ply Whitewalls. Simulated-wire and Super Stock Wheels. Special wheel discs. Others.
GENERAL		
Wheelbase 112"		
Overall length 201.6"		
Overall width 76.2"		
Overall height 52.8"		
Curb wt. (lb.) Holiday Coupe 3628		
Fuel capacity (gal.) 20		
Headroom (Holiday Coupe) front 37.6" rear 36.3"		
Legroom (Holiday Coupe) front 42.7" rear 32.7"		
Hiproom (Holiday Coupe) front 59.5" rear 53.0"		
Tread front 59.0", rear 59.0"		
SAFETY		
And all the new GM safety features are standard on 4-4-2, including energy-absorbing steering column.		



Drive a '68 "youngmobile" from Oldsmobile

