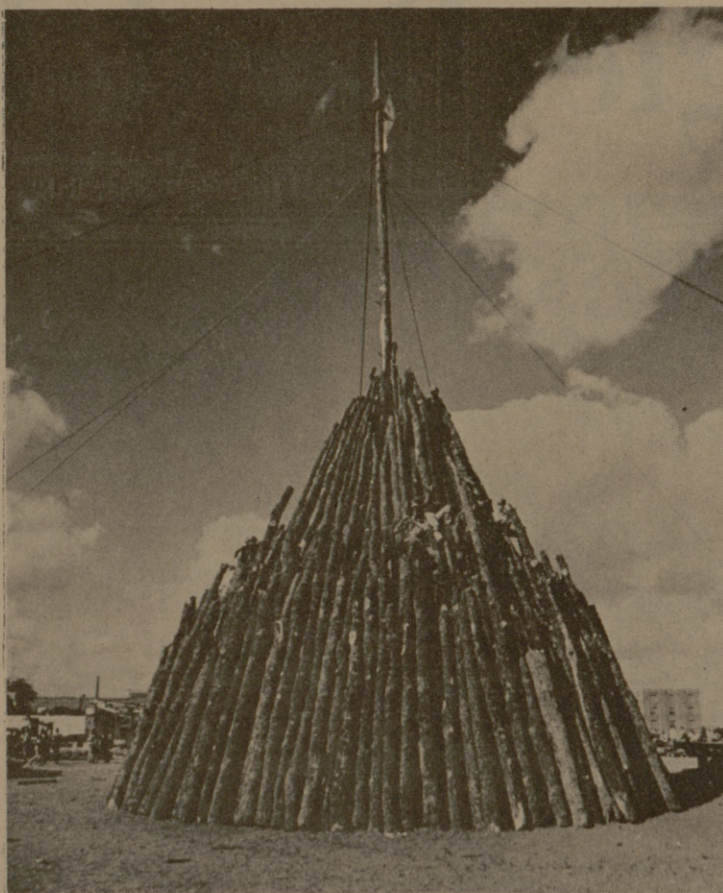




AGGIES HAUL LOGS TO THE STACKING AREA WITH MANPOWER.



THE BONFIRE IS READY ...



... AND IGNITED AFTER A WEEK'S PREPARATION.



THE CUTTING AREA, SOUTH OF A&M, IS BUSY DURING BONFIRE WEEK.



"Hell yeah, We'll beat t. u."

**Welcome —**  
**AGGIES —**  
**To —**  
**YOUNGBLOOD'S**  
 GOOD FOOD AT MODERATE PRICES  
 FAST, EFFICIENT SERVICE  
 FOR YOUR COMFORT AND CONVENIENCE

Rock Building  
Hiway 6
PHONE  
822-4557
Midway Between  
Bryan and College

Part of becoming a man is learning to handle money. When you come to A&M, you'll need a good banking connection in College Station.

Sure, you could bank at home in your family bank. That would be convenient for your parents — but what about you?

Most A&M students have a bank account here. They find it more convenient — and parents find it gives students excellent training in money management.

The choice of your banking connection is all important. We invite you to join the many families who consider the Bank of A&M as their banking connection in College Station.

The Bank of A&M's new facilities are conveniently located just off the campus, across Highway Six from the Ramada Inn. Just a couple of minutes from anywhere in College Station.

The Bank of A&M's young staff, headed by President Dennis Goehring '57, is specially trained to serve the needs of A&M students.

For example, no service charge are made on students accounts — regardless of balance. A book of 20 "A&M Special" student checks (several months supply for an average account) cost \$2.00.

For additional information about your banking connection, write Dennis at Box BC, College Station.

**BANK of A & M**



member/fdic

**DIRECTORS**

- Henry Clay/President, First Bank & Trust
- Dennis Goehring/President, Bank of A&M
- Bill Holt/Sr. Vice-President, First Bank
- Dr. F. W. R. Hubert/Dean, Liberal Arts
- William T. Moore/State Senator
- John Naylor/Kizer Claims Service
- Engene Stallings/Football Coach
- Stanley Stephen/Exec. V.P., First Bank
- Dr. Fred Maurer/Assoc. Dean, Vet. Medicine
- Dr. Charles Samson/Head, Civil Engineering



*When you come to College Station You'll need a good bank connection*